

APP CRS	Rwy Idg	<b>6101</b>
<b>181°</b>	TDZE	<b>5024</b>
	Apt Elev	<b>5024</b>

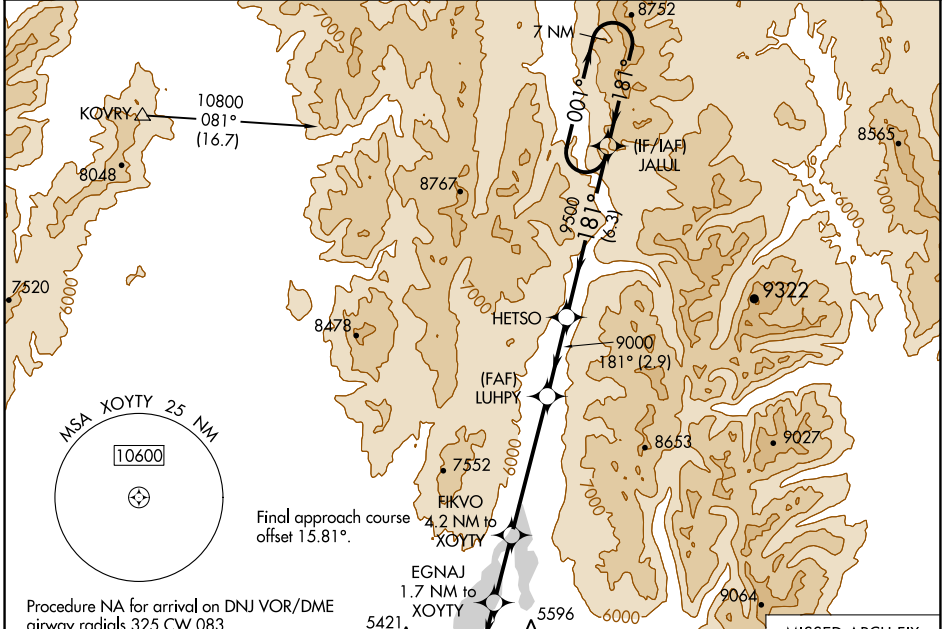
# RNAV (GPS) RWY 16

MC CALL MUNI (MYL)

**▼** Rwy 16 helicopter visibility reduction below 1 SM NA.  
**▲** DME/DME RNP-0.3 NA.  
**☁** -20°C Straight-in Rwy 16 NA at night, Circling Rwy 16 NA at night.

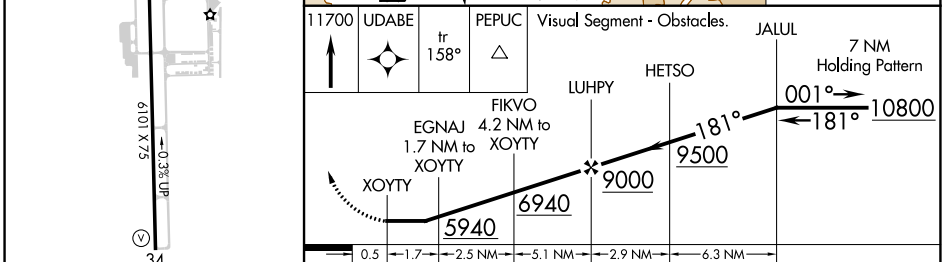
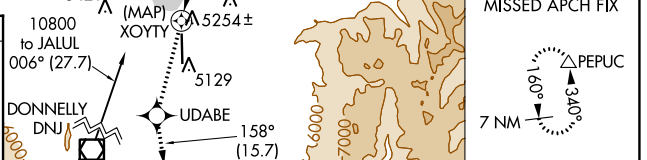
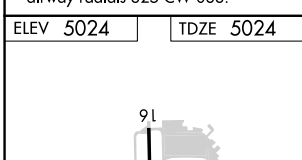
MISSED APPROACH: Climb to 11700 direct UDABE and on track 158° to PEPUC and hold, continue climb-in-hold to 11700.

ASOS <b>119.925</b>	SALT LAKE CENTER <b>128.05 306.95</b>	UNICOM <b>122.8 (CTAF)</b> <b>☺</b>
------------------------	--	--



NW-1, 22 FEB 2024 to 21 MAR 2024

NW-1, 22 FEB 2024 to 21 MAR 2024



CATEGORY	A	B	C	D
LNAV MDA	5520-1	496 (500-1)	5520-1 $\frac{3}{8}$ 496 (500-1 $\frac{3}{8}$ )	NA
<b>C</b> CIRCLING	5940-1 $\frac{1}{4}$	916 (1000-1 $\frac{1}{4}$ )	6140-3 1116 (1200-3)	NA

WAAS CH <b>49016</b> <b>W34A</b>	APP CRS <b>346°</b>	Rwy Idg TDZE Apt Elev	<b>6101</b> <b>5012</b> <b>5024</b>
--	------------------------	-----------------------------	---

# RNAV (GPS) RWY 34

MC CALL MUNI (MYL)

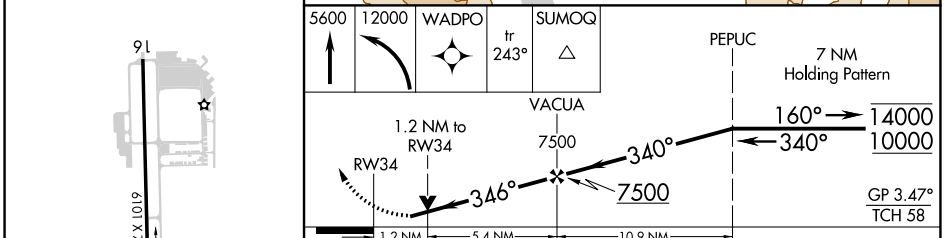
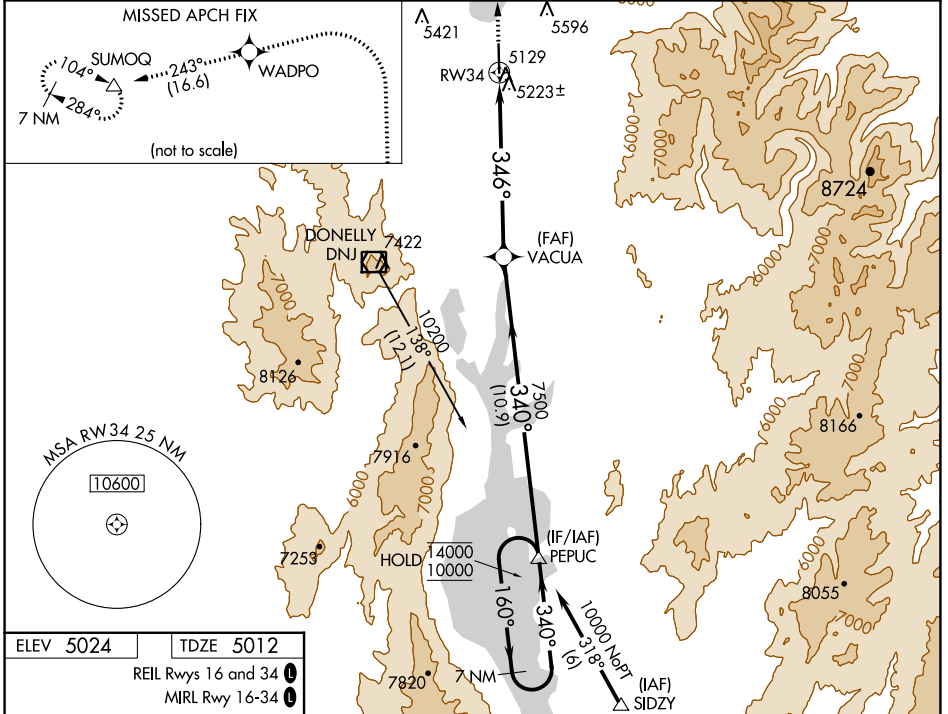
RNP AR APCH - GPS.

For uncompensated Baro-VNAV systems, LNAV/VNAV NA below -24°C or above 40°C. When local altimeter setting not received, procedure NA. Rwy 34 helicopter visibility reduction below 3/4 SM NA. Circling Rwy 16 NA at night.

MISSED APPROACH: Climb to 5600, then climbing left turn to 2000 direct WADPO and on track 243° to SUMOQ and hold, continue climb-in-hold to 12000.

\*Missed approach requires minimum climb of 265 feet per NM to 6380.

ASOS <b>119.925</b>	SALT LAKE CENTER <b>128.05 306.95</b>	UNICOM <b>122.8 (CTAF) 0</b>
------------------------	--	---------------------------------



CATEGORY	A	B	C	D
LPV DA	5375-1 363 (400-1)			
LNAV/VNAV DA	5683-1 671 (700-1 1/2)			
LNAV MDA*	5520-1	508 (500-1)	5520-1 3/8	508 (500-1 3/8)
LNAV MDA	5680-1	668 (700-1)	5680-1 7/8	668 (700-1 7/8)
CIRCLING	5700-1 676 (700-1)	5920-1 1/4 896 (900-1 1/4)	6140-3 1116 (1200-3)	6660-3 1636 (1700-3)

NW-1, 22 FEB 2024 to 21 MAR 2024

NW-1, 22 FEB 2024 to 21 MAR 2024