

AWDAD ONE ARRIVAL
(AWDAD.AWDAD1) 07DECI7

(AWDAD.AWDAD1) 23110
AWDAD ONE ARRIVAL

NEW ORLEANS APP CON
125.5 350.35
MSY D-ATIS
127.55
NEW ATIS
124.9



ARRIVAL ROUTE DESCRIPTION

FIGHTING TIGER TRANSITION (LSU.AWDAD1): From over LSU VORTAC on LSU R-135 to AWDAD INT.

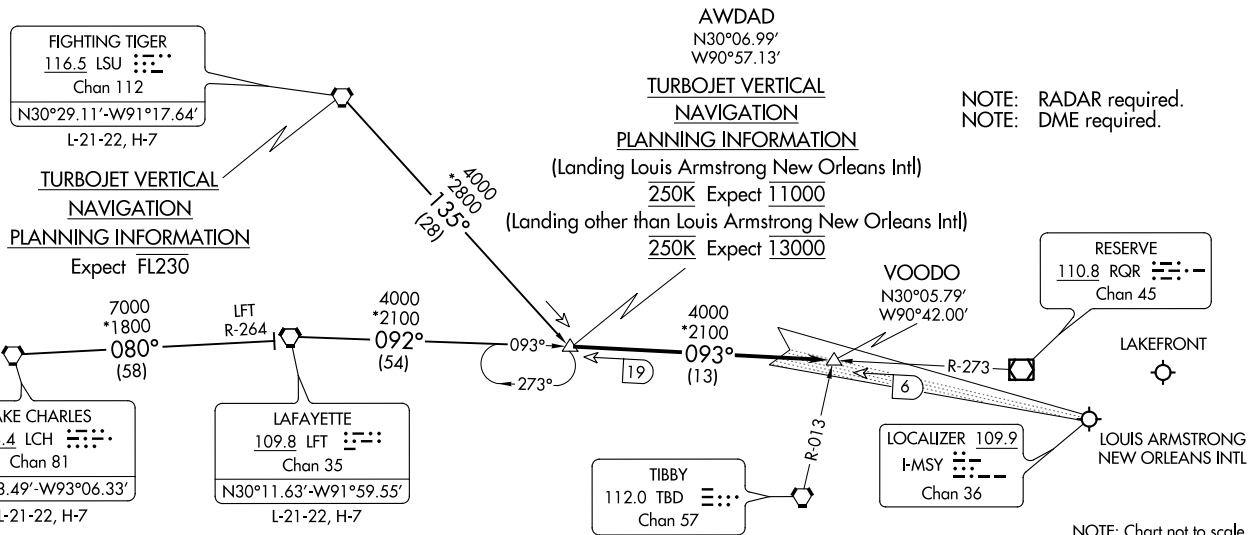
LAFAYETTE TRANSITION (LFT.AWDAD1): From over LFT VOTRAC on LFT R-092 and RQR R-273 to AWDAD INT.

LAKE CHARLES TRANSITION (LCH.AWDAD1): From over LCH VORTAC on LCH R-080 and LFT R-264 to LFT VORTAC then on LFT R-092 and RQR R-273 to AWDAD INT.

From over AWDAD INT on RQR VOR/DME R-273 to VOODO INT.

LANDING KMSY RWY 11: Intercept I-MSY localizer and expect clearance for ILS RWY 11 approach.

LANDING OTHER: Expect vectors to final approach course.



A-609 (FAA)

NEW ORLEANS, LOUISIANA

NOTE: Chart not to scale.

RNAV 1 - DME/DME/IRU or GPS.

RADAR required.

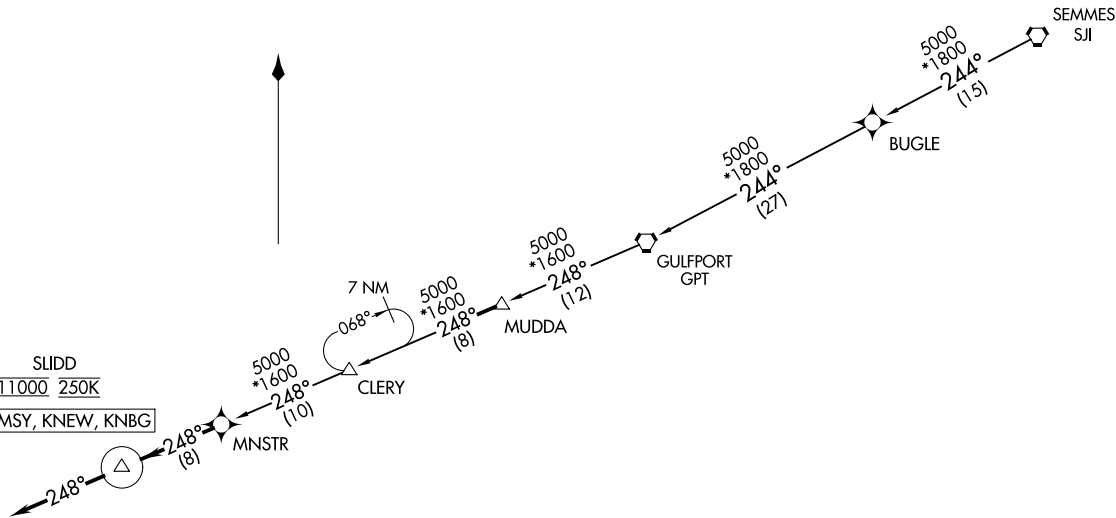
NEW ORLEANS APP CON
125.5 350.35 (WEST)
133.15 290.3 (EAST)
KNBG ATIS
279.55
MSY D-ATIS
127.55
NEW ATIS
124.9

MNSTR ONE ARRIVAL (RNAV)
(MNSTR,MNSTR1) 23FEB23

(MNSTR,MNSTR1) 23054
MNSTR ONE ARRIVAL (RNAV)

AL-609 (FAA)

NEW ORLEANS, LOUISIANA



SLIDD
11000 250K
LDG KMSY, KNEW, KNBG

LAKEFRONT
LOUIS ARMSTRONG
NEW ORLEANS INTL
NEW ORLEANS NAS JRB
(ALVIN CALLENDER FLD)

ARRIVAL ROUTE DESCRIPTION

GULFPORT TRANSITION (GPT.MNSTR1)

SEMMES TRANSITION (SJI.MNSTR1)

LANDING ALL AIRPORTS: From MNSTR on track 248° to cross SLIDD at 11000 and at 250K, then on track 248°. Expect RADAR vectors to final approach course.

NOTE: Chart not to scale.

NEW ORLEANS, LOUISIANA

OLEDD FOUR ARRIVAL
(OLEDD, OLEDD4) 10NOV16

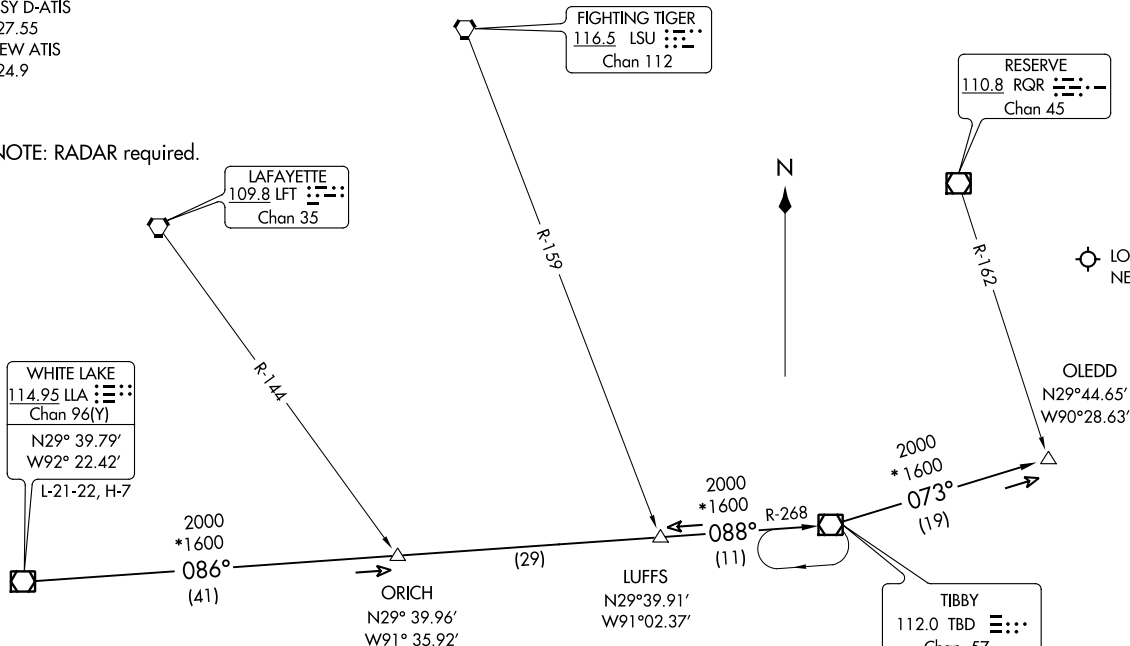
OLEDD FOUR ARRIVAL
(OLEDD, OLEDD4) 22195

AL-609 (FAA)

NEW ORLEANS, LOUISIANA

NEW ORLEANS APP CON
125.5 350.35
MSY D-ATIS
127.55
NEW ATIS
124.9

NOTE: RADAR required.



ARRIVAL ROUTE DESCRIPTION

TIBBY TRANSITION (TBD.OLEDD4): From over TBD VOR/DME on TBD R-073 to OLEDD INT. Thence. . .

WHITE LAKE TRANSITION (LLA.OLEDD4): From over LLA VOR/DME on LLA R-086 to LUFFS INT, then R-268 to TBD VOR/DME, then on TBD R-073 to OLEDD INT. Thence. . .

. . . .expect RADAR vectors to final approach course.

TURBOJET VERTICAL NAVIGATION
PLANNING INFORMATION

Expect 11000

NOTE: Chart not to scale.

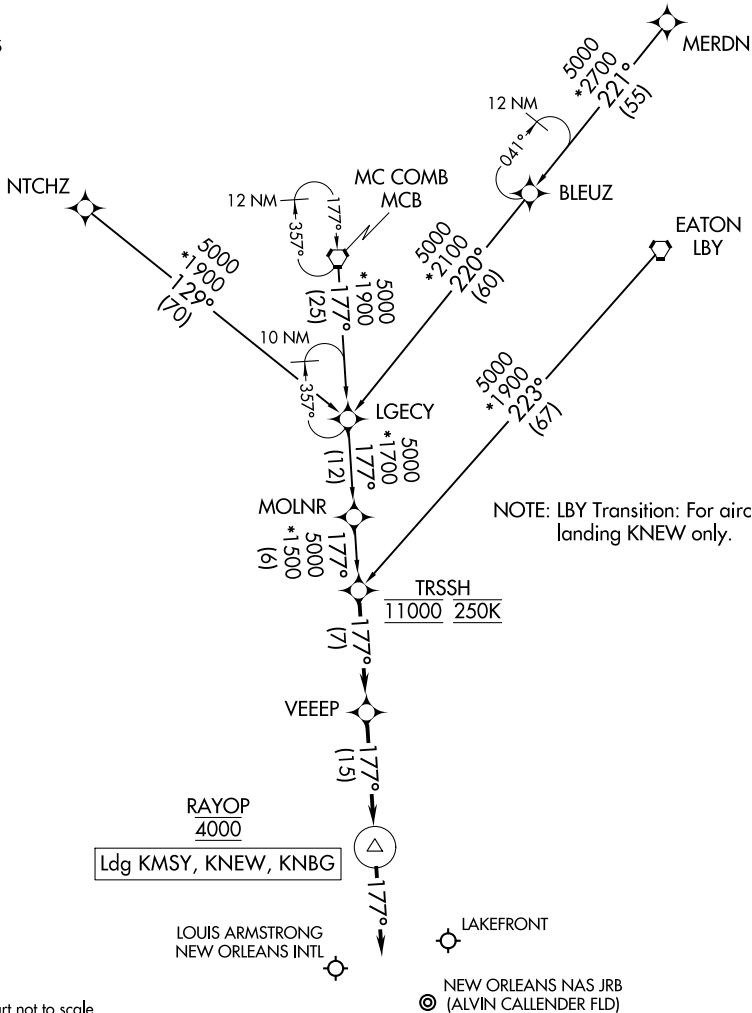
NEW ORLEANS, LOUISIANA

TRSSH ONE ARRIVAL (RNAV)

NEW ORLEANS, LOUISIANA

NEW ORLEANS APP CON
 125.5 350.35 (WEST)
 133.15 290.3 (EAST)
 KNBG ATIS
 279.55
 MSY D-ATIS
 127.55
 NEW ATIS
 124.9

RNAV 1 - DME/DME/IRU or GPS.
 RADAR required.



NOTE: Chart not to scale.

ARRIVAL ROUTE DESCRIPTION

- EATON TRANSITION (LBY.TRSSH1)
- MC COMB TRANSITION (MCB.TRSSH1)
- MERDN TRANSITION (MERDN.TRSSH1)
- NTCHZ TRANSITION (NTCHZ.TRSSH1)

LANDING KMSY/KNBG/KNEW: From TRSSH on track 177° to VEEEP, then on track 177° to cross RAYOP at 4000, then on track 177°. Expect RADAR vectors to final approach course.

TRSSH ONE ARRIVAL (RNAV)

NEW ORLEANS, LOUISIANA