

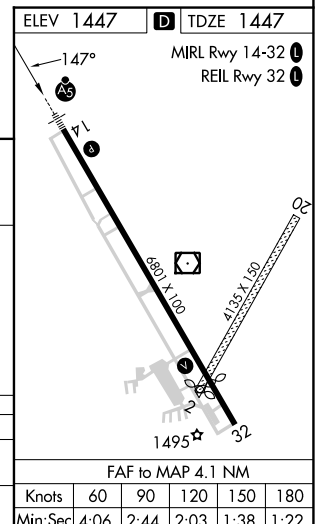
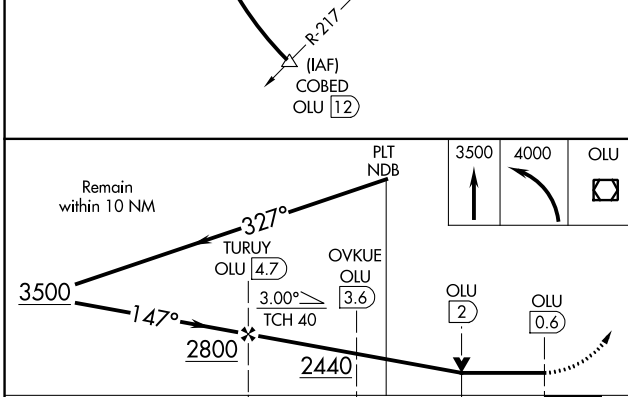
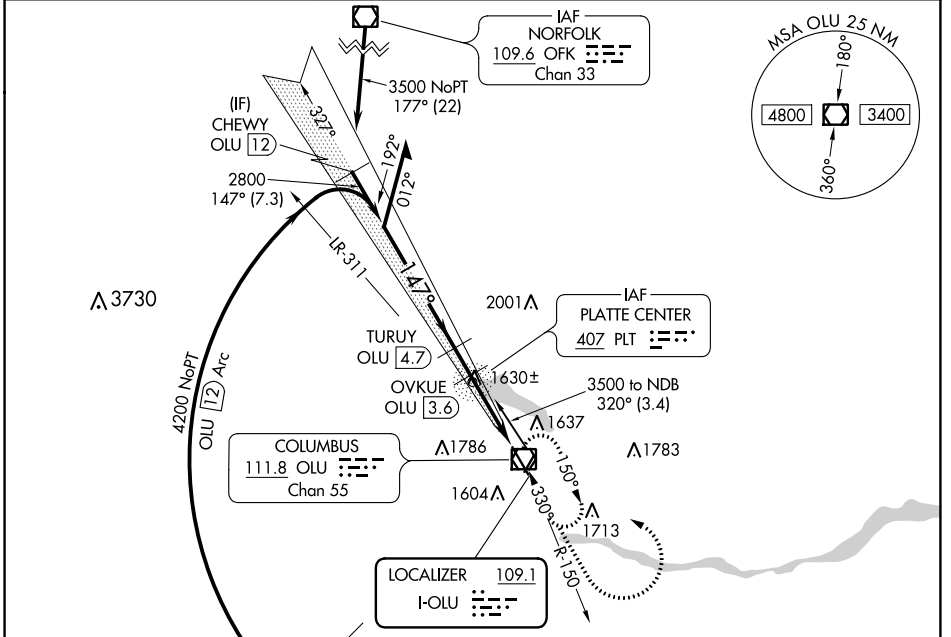
LOC I-OLU 109.1	APP CRS 147°	Rwy Idg TDZE Apt Elev	6260 1447 1447
---------------------------	------------------------	-----------------------------	---

LOC RWY 14

COLUMBUS MUNI (OLU)

ADF or DME required.	MALSR	MISSED APPROACH: Climb to 3500 then climbing left turn to 4000 direct OLU VOR/DME and hold.
<p>▼ Circling NA to Rwys 2 and 20.</p> <p>▲ NA Rwy 14 helicopter visibility reduction below 3/4 SM NA.</p>		

AWOS-3PT 125.525	MINNEAPOLIS CENTER 128.75 346.3	UNICOM 123.05 (CTAF)
----------------------------	---	--------------------------------



CATEGORY	A	B	C	D
S-14	1920-3/4 473 (500-3/4)		1920-1 473 (500-1)	
CIRCLING	2000-1 553 (600-1)		2100-1 3/4 653 (700-1 3/4)	2100-2 653 (700-2)

FAF to MAP 4.1 NM					
Knots	60	90	120	150	180
Min:Sec	4:06	2:44	2:03	1:38	1:22

NC-2, 22 FEB 2024 to 21 MAR 2024

NC-2, 22 FEB 2024 to 21 MAR 2024

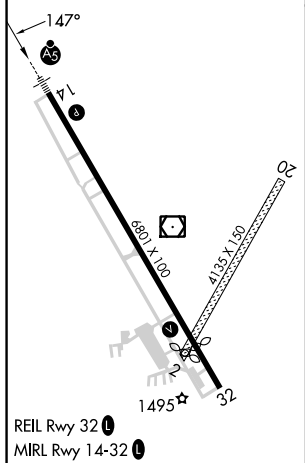
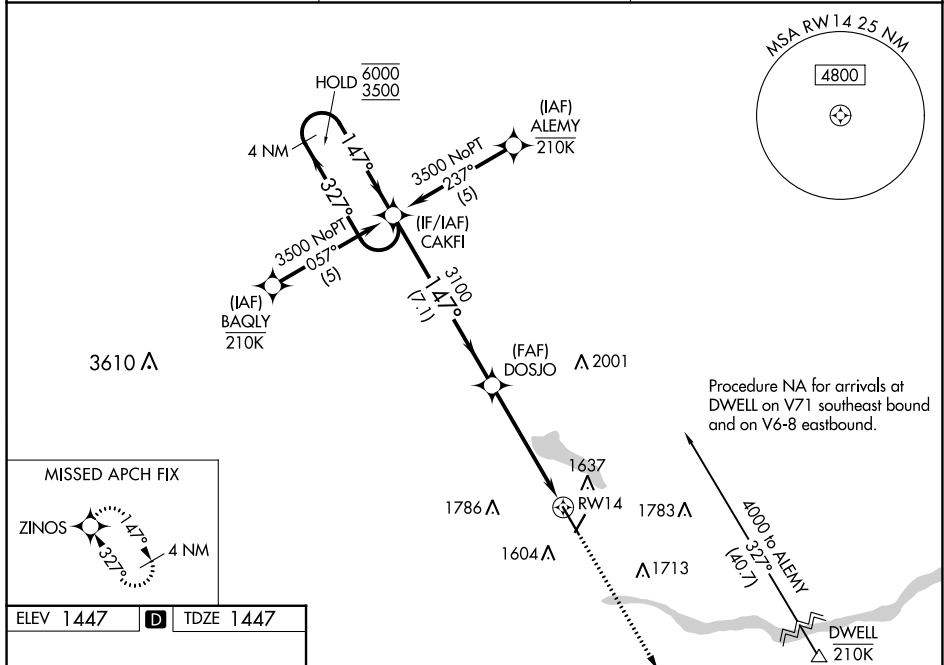
WAAS CH 60910 W14A	APP CRS 147°	Rwy Idg TDZE Apt Elev	6260 1447 1447
--	------------------------	-----------------------------	---

RNAV (GPS) RWY 14

COLUMBUS MUNI (OLU)

RNP APCH - GPS.	MALSR	MISSED APPROACH: Climb to 4000 direct ZINOS and hold.
<p>NA Circling NA to Rwys 2 and 20. Rwy 14 helicopter visibility reduction below $\frac{3}{4}$ SM NA. For uncompensated Baro-VNAV systems, LNAV/VNAV NA below -23°C or above 54°C. For inop ALS, increase LPV all Cats visibility to $\frac{7}{8}$ SM.</p>		

AWOS-3PT 125.525	MINNEAPOLIS CENTER 128.75 346.3	UNICOM 123.05 (CTAF) 0
----------------------------	---	----------------------------------



ELEV 1447	D	TDZE 1447		
<p>4000</p>				
<p>4 NM Holding Pattern</p> <p>6000 ← 327°</p> <p>3500 → 147°</p>		<p>1.7 NM to RWY 14</p> <p>RWY 14</p>		
<p>GP 3.00°</p> <p>TCH 40</p>		<p>3100</p> <p>7.1 NM</p> <p>3.4 NM</p> <p>1.7 NM</p>		
CATEGORY	A	B	C	D
LPV DA		1750- $\frac{3}{4}$	303 (400- $\frac{3}{4}$)	
LNAV/VNAV DA		1840- $\frac{3}{4}$	393 (400- $\frac{3}{4}$)	
LNAV MDA	2020- $\frac{3}{4}$	573 (600- $\frac{3}{4}$)	2020-1 $\frac{1}{4}$	573 (600-1 $\frac{1}{4}$)
C CIRCLING	2020-1	573 (600-1)	2100-1 $\frac{3}{4}$	2100-2
			653 (700-1 $\frac{3}{4}$)	653 (700-2)

NC-2, 22 FEB 2024 to 21 MAR 2024

NC-2, 22 FEB 2024 to 21 MAR 2024

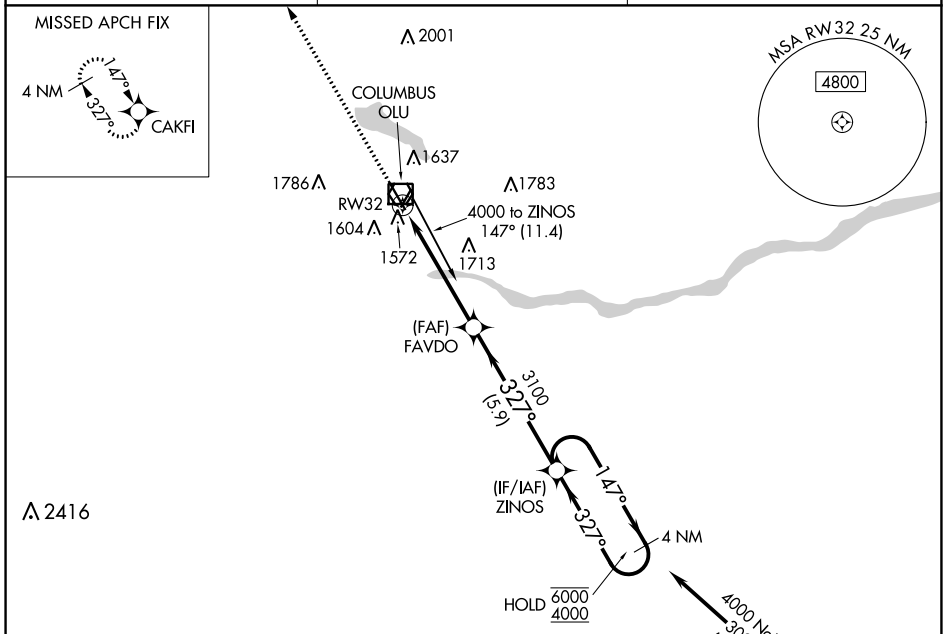
WAAS CH 81810 W32A	APP CRS 327°	Rwy Idg TDZE Apt Elev	5850 1443 1447
--	------------------------	-----------------------------	---

RNAV (GPS) RWY 32

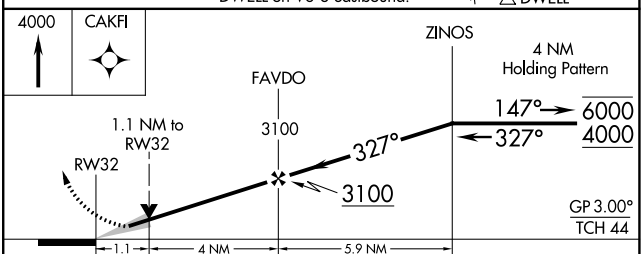
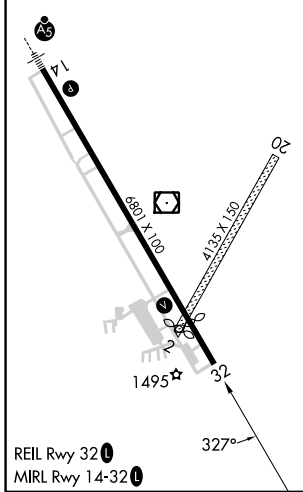
COLUMBUS MUNI (OLU)

RNP APCH - GPS.	MISSED APPROACH: Climb to 4000 direct CAKFI and hold.
<p>▼ Circling NA to Rwys 2 and 20. For uncompensated Baro-VNAV systems, LNAV/VNAV NA below -22°C or above 54°C.</p> <p>▲ NA</p>	

AWOS-3PT 125.525	MINNEAPOLIS CENTER 128.75 346.3	UNICOM 123.05 (CTAF) 0
----------------------------	---	----------------------------------



ELEV 1447	D	TDZE 1443
-----------	----------	-----------



CATEGORY	A	B	C	D
LPV DA		1710-7/8	267 (300-7/8)	
LNAV/VNAV DA		1840-1 1/8	397 (400-1 1/8)	
LNAV MDA	1840-1	397 (400-1)	1840-1 1/8	397 (400-1 1/8)
C CIRCLING	2000-1	553 (600-1)	2100-1 3/4 653 (700-1 3/4)	2100-2 653 (700-2)

NC-2, 22 FEB 2024 to 21 MAR 2024

NC-2, 22 FEB 2024 to 21 MAR 2024

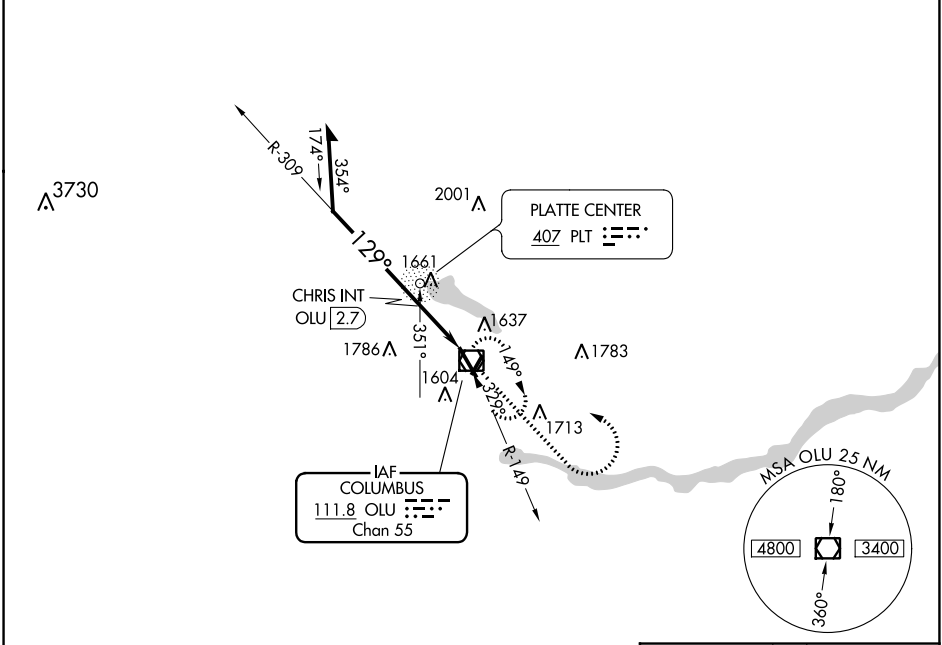
VOR/DME OLU 111.8 Chan 55	APP CRS 129°	Rwy Idg TDZE Apt Elev	6260 1447 1447
--	------------------------	-----------------------------	---

VOR RWY 14

COLUMBUS MUNI (OLU)

 Inoperative table does not apply. Circling Rwy 2, 20 NA.	 MALSR	MISSED APPROACH: Climb to 3200 then climbing left turn to 4000 direct OLU VOR/DME and hold.

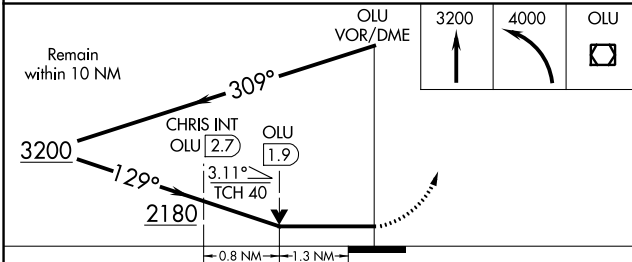
AWOS-3PT 125.525	MINNEAPOLIS CENTER 128.75 346.3	UNICOM 123.05 (CTAF)
----------------------------	---	--------------------------------



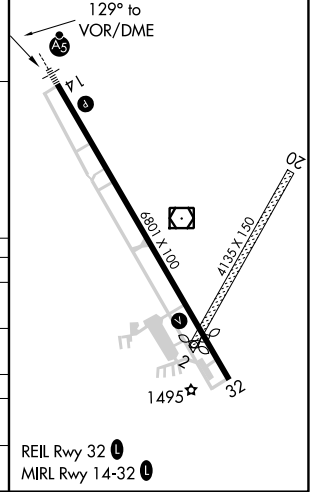
NC-2, 22 FEB 2024 to 21 MAR 2024

NC-2, 22 FEB 2024 to 21 MAR 2024

Maximum entry altitude 6000 at OLU VOR/DME.



ELEV 1447		TDZE 1447
-----------	--	-----------



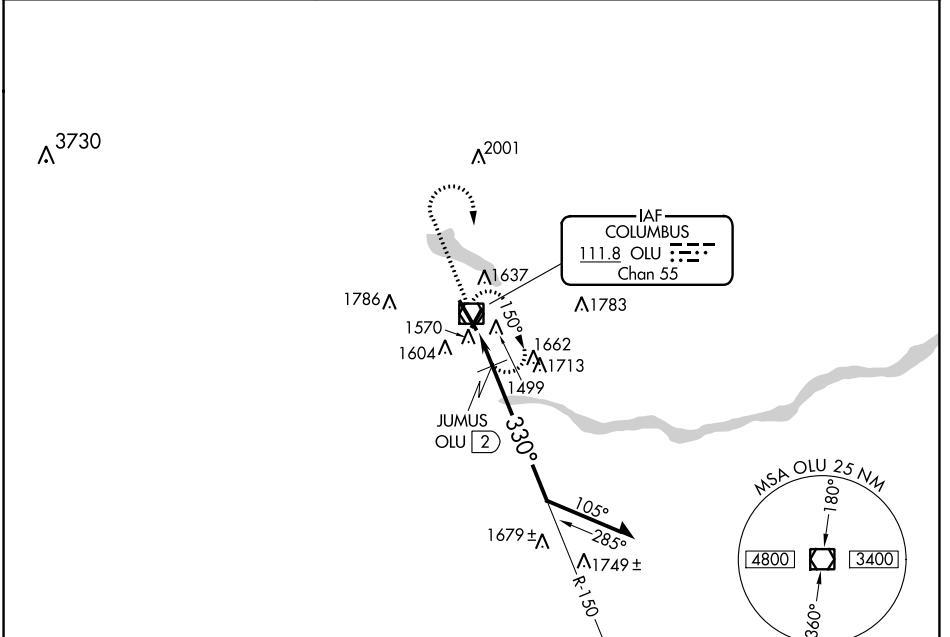
CATEGORY	A	B	C	D
S-14	2180-1	733 (800-1)	2180-2 733 (800-2)	2180-2¼ 733 (800-2¼)
CIRCLING	2180-1	733 (800-1)	2180-2 733 (800-2)	2180-2¼ 733 (800-2¼)
CHRIS FIX MINIMUMS				
S-14	1900-1	453 (500-1)	1900-1¼ 453 (500-1¼)	1900-1½ 453 (500-1½)
CIRCLING	2000-1	553 (600-1)	2100-1¾ 653 (700-1¾)	2100-2 653 (700-2)

VOR/DME OLU 111.8 Chan 55	APP CRS 330°	Rwy Idg TDZE Apt Elev	5850 1442 1447
--	------------------------	-----------------------------	---

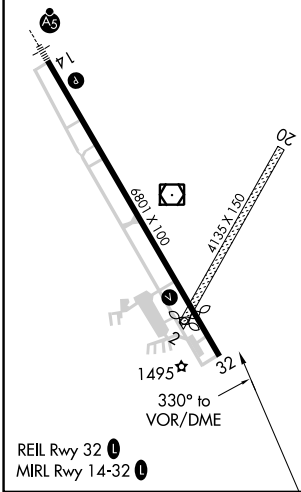
VOR RWY 32
COLUMBUS MUNI (OLU)

⚠ Circling Rwy 2, 20 NA. MISSED APPROACH: Climb to 3500 then climbing right turn to 4000 direct OLU VOR/DME and hold.

AWOS-3PT 125.525	MINNEAPOLIS CENTER 128.75 346.3	UNICOM 123.05 (CTAF) 0
----------------------------	---	----------------------------------



ELEV 1447	D	TDZE 1442
-----------	----------	-----------



3500 4000 OLU

OLU VOR/DME

Remain within 10 NM

150° 3200

330° 2080

OLU 1.4 JUMUS OLU (2)

3.48° TCH 44

1 NM 0.6 NM

VGSI and descent angles not coincident (VGSI Angle 3.00/TCH 44).

CATEGORY	A	B	C	D
S-32	2080-1	638 (700-1)	2080-1¾ 638 (700-1¾)	2080-2 638 (700-2)
CIRCLING	2080-1	633 (700-1)	2100-1¾ 653 (700-1¾)	2100-2 653 (700-2)
JUMUS DME MINIMUMS				
S-32	1820-1 378 (400-1)			1820-1¼ 378 (400-1¼)
CIRCLING	2000-1	553 (600-1)	2100-1¾ 653 (700-1¾)	2100-2 653 (700-2)

NC-2, 22 FEB 2024 to 21 MAR 2024

NC-2, 22 FEB 2024 to 21 MAR 2024