

03JAN19

O'HARE FIVE DEPARTURE

CHICAGO, ILLINOIS
CHICAGO O'HARE INTL (ORD)

**TOP ALTITUDE:
5000**

SPECIAL INSTRUCTIONS: For appropriate departure control frequency, see graphic. Use frequency depicted within the sector where first navaid/fix for your route is located (sectors indicated by dashed lines; frequencies in dashed box within).

BADGER
116.4 BAE
Chan 111
N43°07.01'-W88°17.06'
L-28, H-5

NOTE: All turbo-jet departures in all directions, maintain 250K until advised by ATC.

CLNC DEL
121.6
CPDLC

**CHICAGO DEP CON
WEST**
126.625 327.075

DUPAGE
108.4 DPA
Chan 21
N41°53.42'
W88°21.01'
L-28

MYKIE
N42°09.80'
W88°48.51'
L-28, H-5

**CHICAGO
Chan 19 (Y)
GCO**
(108.25)
N41°59.65'
W87°54.14'

ALL DME
Equipped Aircraft
Cross 4000

RAYNR
N42°18.66'
W87°49.55'
L-28, H-5

PETTY
N42°49.64'
W87°38.04'
L-28

KEELER
116.6 ELX
Chan 113
N42°08.66'
W86°07.36'
L-28, H-5-10

EBAKE
N42°16.76'
W87°03.80'
L-28

**CHICAGO DEP CON
EAST/NORTH**
125.0 337.4

DUFEE
N42°06.75'
W87°03.80'
L-28

IOWA CITY
116.2 IOW
Chan 109
N41°31.14'
W91°36.80'
L-28, H-5

NOONEY
N42°02.80'
W88°48.51'
L-28, H-5

SIMMN
N41°58.84'
W88°52.71'
L-28

OLINN
N41°54.80'
W88°48.51'
L-28, H-5

PEKUE
N41°47.79'
W88°48.51'
L-28, H-5

BACEN
N41°24.40'
W88°01.78'
L-28, H-5

DENNT
N41°25.15'
W87°43.48'
L-28, H-5

EARND
N41°25.52'
W87°34.33'
L-28, H-5

MOBLE
N41°56.73'
W87°03.80'
L-28

TAKEOFF MINIMUMS

Rwys 4L/R, 9L/R, 10L/C/R, 22L/R: Standard.

Rwy 27L: Standard with minimum climb of 205' per NM to 1700.

Rwy 27R: Standard with minimum climb of 220' per NM to 1700.

Rwy 28C: Standard with minimum climb of 220' per NM to 1700.

Rwy 28L: Standard with minimum climb of 210' per NM to 900, or alternatively, with standard takeoff minimums and a normal 200' per NM climb gradient, takeoff must occur no later than 1900' prior to DER.

Rwy 28R: Standard with minimum climb of 225' per NM to 1700.

(NARRATIVE ON FOLLOWING PAGE)

19031

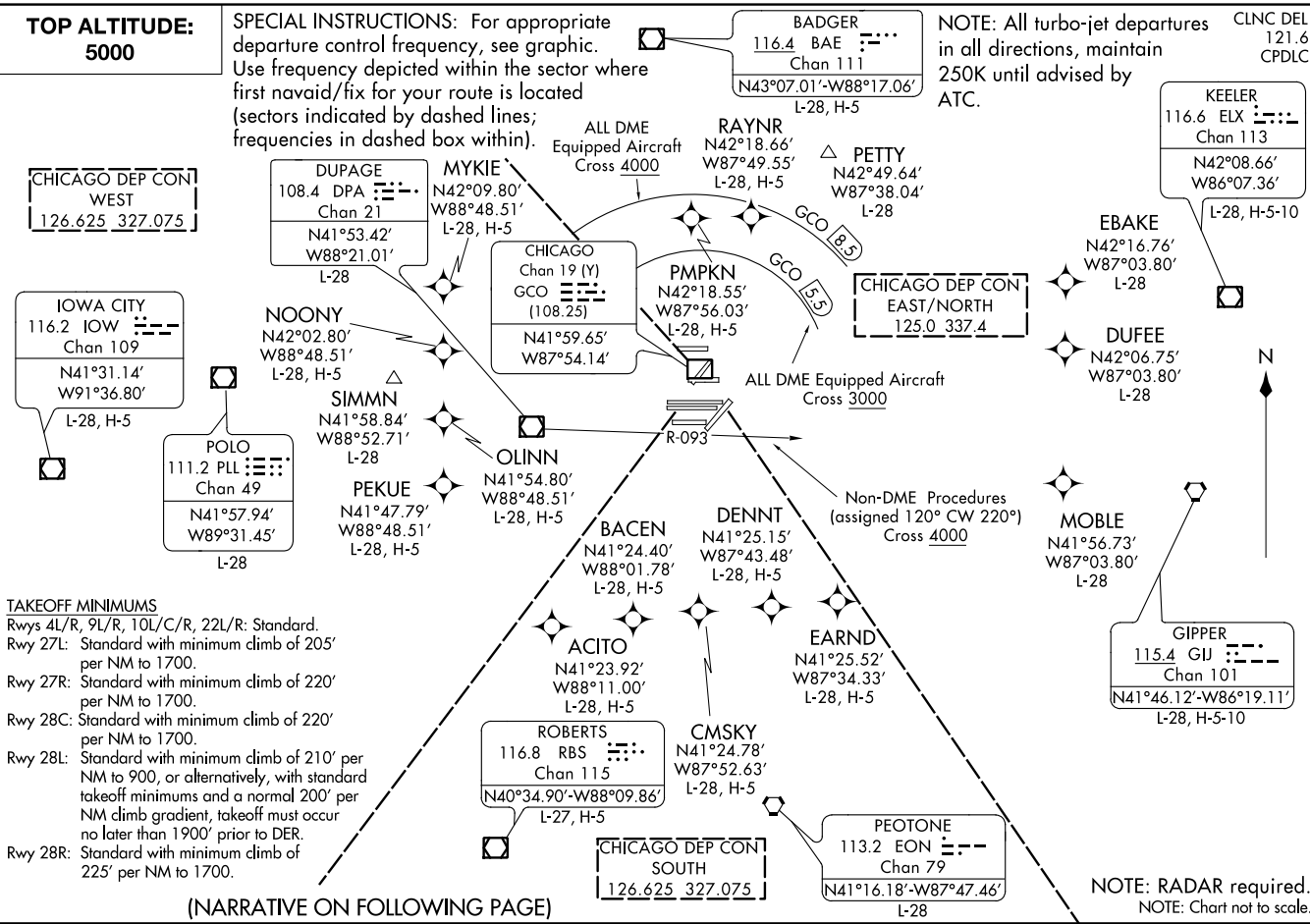
O'HARE FIVE DEPARTURE

CHICAGO O'HARE INTL (ORD)
CHICAGO, ILLINOIS

AL-166 (FAA)



NOTE: RADAR required.
NOTE: Chart not to scale.



O'HARE FIVE DEPARTURE



DEPARTURE ROUTE DESCRIPTION

ALL AIRCRAFT: Expect RADAR vectors to first enroute navaid/fix.
Expect clearance to requested altitude/flight level ten minutes after departure.

ALL DME EQUIPPED AIRCRAFT: Cross 5.5 DME arc of GCO DME at or above 3000,
cross 8.5 DME arc of GCO DME at or above 4000, maintain 5000 or assigned altitude.
If unable to comply advise ATC as soon as possible prior to departure.

EC-3, 20 JUN 2019 to 18 JUL 2019

EC-3, 20 JUN 2019 to 18 JUL 2019