

ILS or LOC RWY 6

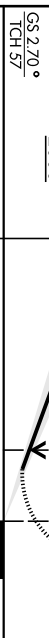
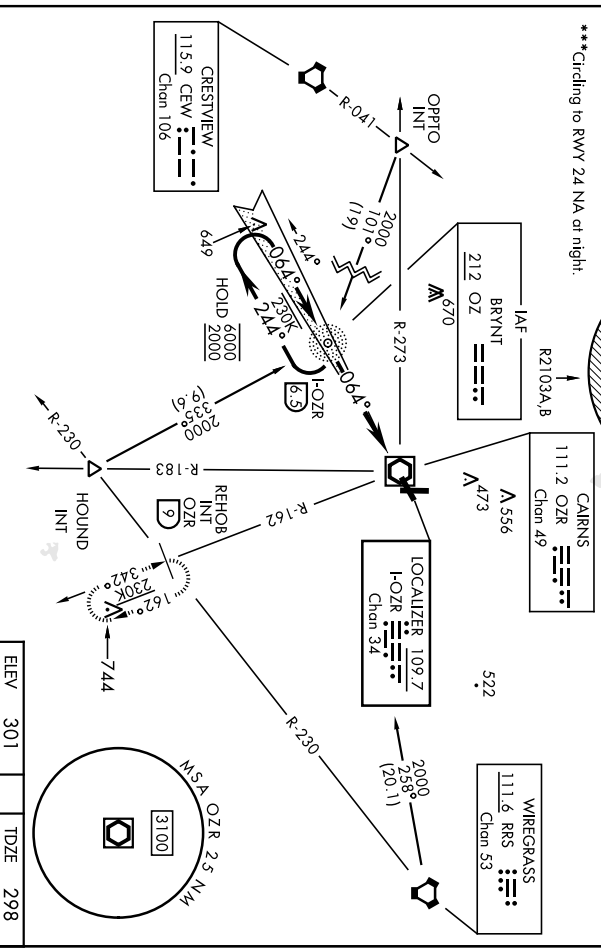
CAIRNS AAF (KOZR)

LOC-HOZR Chon 34	APCH CRS 064°	Rev./Idg 298	TDZE Appl Elev 301
ADF or DME required			
▲**When ALS inop, increase RVR to 40, vis to 3/4 mile *When ALS inop, increase CAT AB RVR to 55, vis to 1 mile, CAT CD vis to 1 1/2 miles.			
ATIS 111.2 316.15	App CON 125.4 133.75 133.45 121.1	(021°-120°) (121°-219°) (220°-340°) (341°-020°)	

TOWER* 135.2 (CTAF) 248.55	MISSED APPROACH: Climb to 800 then climbing right turn to 2000 via OZR VOR/DME R-162 to REHOB INT (OZR 9 DME) and hold; or when directed by ATIS, climb to 800 then climbing left turn to 2000 heading 290° within 10 NM (RADAR required).
----------------------------------	--

GND CON 121.9 288.25	CINC DEL 118.075 380.1	PAR
----------------------------	------------------------------	-----

***Circling to RWY 24 NA at night.



Use I-OZR DME when on the localizer course.	800	2000	REHOB INT
One Minute Holding Pattern	I-OZR (K5)	I-OZR (Z9)	HAVER I-OZR (O9)
GS 270.0° TCH 57'	5.6 NM		
CATEGORY	A	B	C
SILS 6*	498/24	200	1200-1/2
S-LOC 6**	780/24	482 (500-1/2)	780/50 482 (500-1)
DIRCLING***	780-1 479 (500-1)	820-1 519 (600-1)	900-1 1/2 599 (600-1 1/2)

HIRL Rwy 6-24	MIRL Rwy 18-36
FAF to MAE 5.6 NM	
Knots	60 90 120 150 180
Min:Sec	5:36 3:44 2:48 2:14 1:52

FORT NOVOSSEL, ALABAMA
Amdt 3 13JUL23
31°16'N-85°43'W
CAIRNS AAF (KOZR)
ILS or LOC RWY 6

NDB RWY 6

CAIRNS AAF (KOZR)

AL-577 (USA)

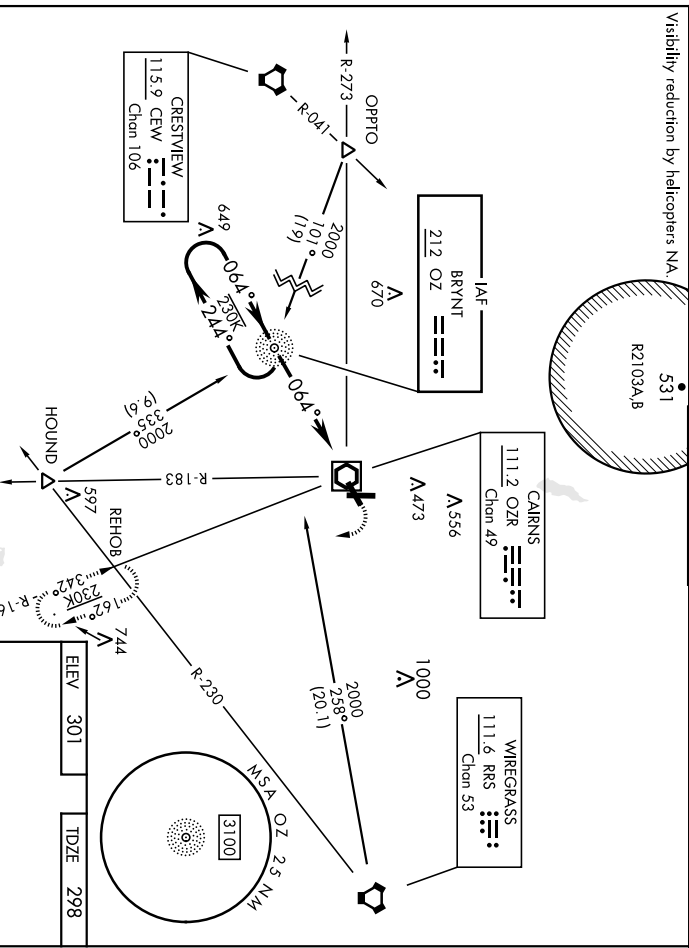
NDB OZ	APCH CRS	Rwy Idg	4546
212	064°	TDZE	298
		Appr Elev	301

MAISR	MISSED APPROACH - Climbing right turn to 2000, via OZR VOR/DME R-162 to REHOB INT and hold or when directed by ATIS, climbing left turn to 2000 heading 290° within 10 NM (RADAR required).
TOWER ★	135.2 (CTAF)
	248.55

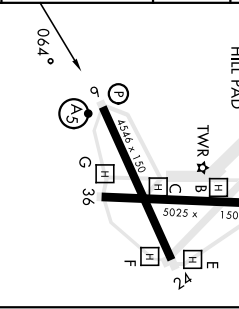
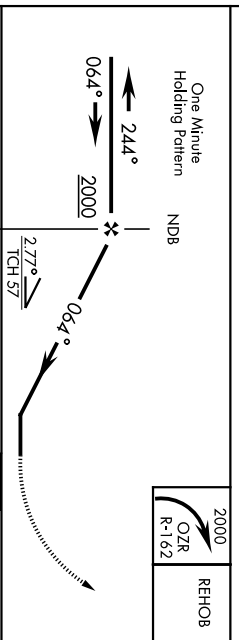
GND CON	121.9	CINC DEL	118.075	PAR	
	288.25		380.1		

▲ * When ALS Inop, increase CAT AB RVR to 55, vis to 1 mile, CAT CD vis to 1 1/2 miles.
 ** Circling to Rwy 24 NA at night.

Visibility reduction by helicopters NA.



NOT FOR CIVIL USE



CATEGORY	A				B				C				D			
	800/40	502	(500-¾)	800/55	502	900-1½	502	900-2	502	900-1½	502	900-2	502	900-1½	502	900-2
S-6 *	800-1	499 (500-1)	820-1	519 (600-1)	900-1½	599 (600-1½)	900-2	599 (600-2)								
CIRCLING**	499 (500-1)	519 (600-1)	599 (600-1½)	599 (600-1½)	599 (600-2)	599 (600-2)	599 (600-2)	599 (600-2)								

FORT NOVOSEL, ALABAMA
 Anch 1 13JUL23
 CAIRNS AAF (KOZR)
 HIRL Rwy 6-24
 MIRL Rwy 18-36
 FAF to MA5 5.6 NM
 NDB RWY 6

RNAV (GPS) RWY 36

CAIRNS AAF (KOZR)

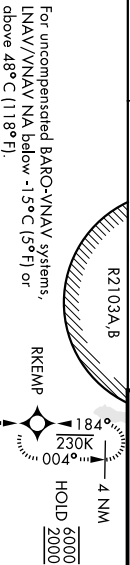
WAAS CH 63110 W36A	APCH CRS 004°	Rwy Idg TDZE Appl Elev 298 301
--	-------------------------	--

AL-577 [USA]

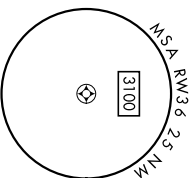
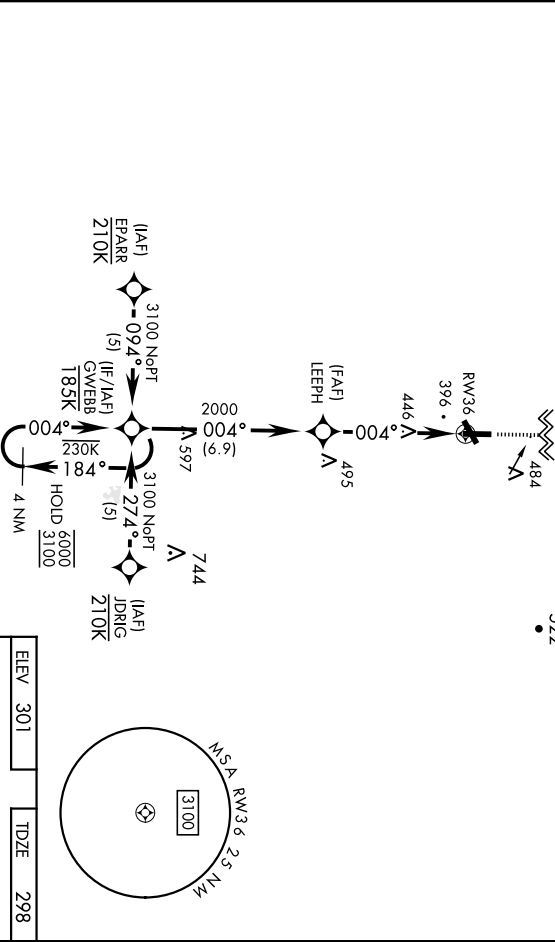
▼ * Circling to rwy 24 NA or night. Visibility reduction by helicopters NA.

MISSED APPROACH: Climb to 2000 direct RKEMP and hold.

ATIS 111-2 316-15	APP CON 125.4 132.75 133.45 121.1	(021°-120°) (121°-21°) (220°-340°) (341°-020°)	TOWER ★ 135.2 (CTAF) 248.55	GND CON 121.9 288.25	CINCL DEL 118.075 380.1	PAR
---------------------------------------	---	---	---	--	---	-----

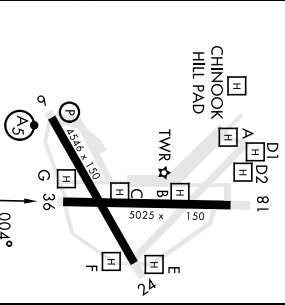


For uncompensated BARO-VNAV systems, LNAV/VNAV NA below -1.5°C (5°F) or above 48° C (118°F).



ELEV 301	TDZE 298
----------	----------

4 NM Holding Pattern GWEBB 7000 3100 004° ← 184° 004°	LEPPH	1.2 NM to RW36	RW36
CS 3.00° TCH 30	2000	5.1 NM	
CATEGORY	A	B	C
LPV DA	565-7/8	267	(300-7/8)
VNAV/DA	634-1	336	(400-1)
LNAV MDA	740-1	442 (500-1)	740-1 3/8 442 (500-1 3/8)
CIRCLING *	780-1 479 (500-1)	820-1 519 (600-1)	900-1 1/2 599 (600-1 1/2) 900-2 599 (600-2)



HIRL Rwy 6-24
MIRL Rwy 18-36

RNAV (GPS) RWY 36

SBAS CH 50537 W06A	APCH CRS 064°	Req./Idg TDZE 298 Appt Elev 301
--	-------------------------	---

AL-577 [USA]

CAIRNS AAF (KOZR)

▼ ** When AIS trap, increase RVR to 40 vis to 3/4 mile.
 *** When AIS trap, increase RVR to 45 vis to 5/8 mile.
 **** When AIS trap, increase CAT Ab RVR to 55 vis to 1 mile;
 CAT CD: 5 to 1/2 miles
 ***** Circling not authorized for Rwy 24 or night. Circling visibility reduction by helicopters not authorized.



MISSED APPROACH: Climb to 900 then climbing right turn to 2000 direct REHOB and hold.

ATIS 111.2 316.15	APP CON 021°-120° 125.4 121°-219° 133.75 220°-340° 133.45 341°-020° 121.1	327.125 270.35 239.275 319.25
---------------------------------------	---	--

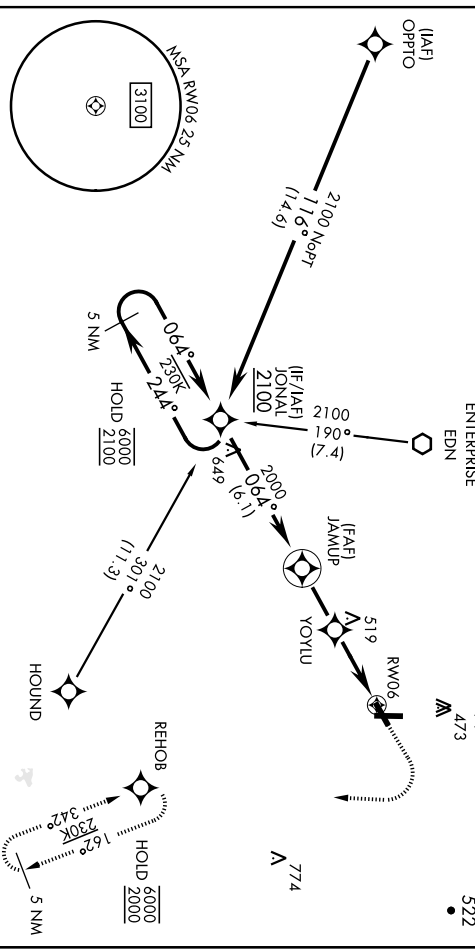
TOWER ★ 135.2 (CTAF) 248.55

GND CON 121.9 288.25

CINIC DEL 118.075 380.1	PAR
-------------------------------	-----

For uncompensated Baro-VNAV systems,
 RNAV/VNAV NA below -1° C or above 54° C.

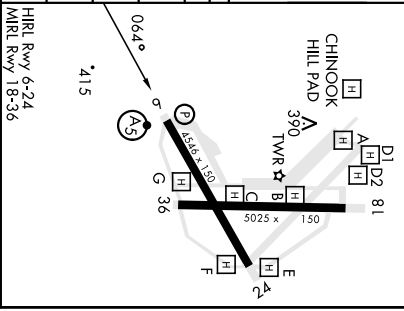
Procedure not authorized for arrivals
 of HOUND on V211 NE bound.



5 NM Holding Pattern	JONAL	JAMUP	YOYU	1.3 NM to RWY06	RWY06
6000 MSL 2100 AGL	← 244°	← 064°	← 1240	← 277 NM	← 31 NM
GP 2.70° TCH 57'					
CATEGORY	A	B	C	D	
LPV DA *	498/24	200			
RNAV/VNAV DA ***	585/24	287			
RNAV MDA ***	720/24	422 (500-1/2)	720/40	422 (500-3/4)	
ⓐ CIRCLING	780-1 (479 (500-1))	820-1 (519 (600-1))	900-1 1/2 (599 (600-1/2))	900-2 (599 (600-2))	

900	2000	REHOB
-----	------	-------

ELEV 301	TDZE 298
----------	----------



VOR RWY 24

CAIRNS AAF (KOZR)

AL-577 [USA]

VOR/DME OZR Chon 49	APCH CRS 246°	Rwy/Ldg TDZE Appt Elev	45456 298 301
------------------------	------------------	------------------------------	---------------------

ATIS 111.2 316.15	APP CON	(021°-120°) 133.75 270.35 133.45 239.275 121.1 319.25	(021°-120°) 121°-21°9' 1220°-340° [341°-020°]
-------------------------	---------	--	--

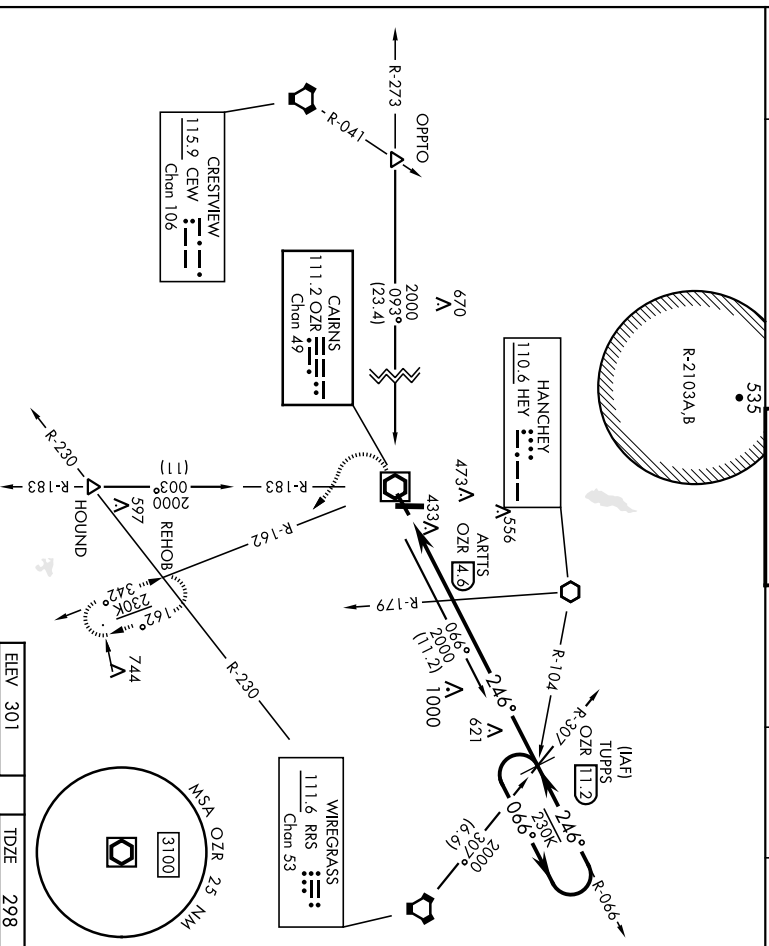
TOWER*	135.2 (CTAF)	248.55
--------	--------------	--------

GND CON	121.9	288.25
---------	-------	--------

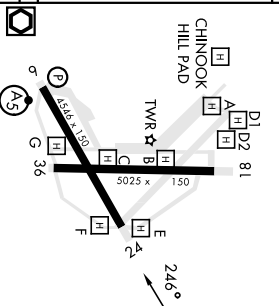
CINCL DEL	118.075	380.1
PAR		

▼ Visibility NA at night;
Visual reduction by helicopters NA.

MISSED APPROACH: Climb to 800 then climbing left turn to 2000 via OZR
VOR/DME R-162 to REHOB INT and hold; or when directed by ATIS, climb to
800 then climbing right turn heading 290° to 2000 within 10 NM (RADAR required).



800	2000	REHOB	ELEV 301	TDZE 298
	OZR R-162			
<p>VOR DME</p> <p>CH 4.6 NM</p> <p>3.11°</p> <p>TCH 45</p>				
CATEGORY	A	B	C	D
S-24	720-1 422	(500-1)	720-1½ 422	(500-1½)
CIRCLING	750-1 479 (500-1)	820-1 519 (600-1)	900-1½ 599 (600-1½)	900-2 599 (600-2)
FORT NOVOSSEL, ALABAMA		31°16'N-85°43'W		
Archd 13 13JUL23		HRL Rwy 6-374 MIRL Rwy 18-36		

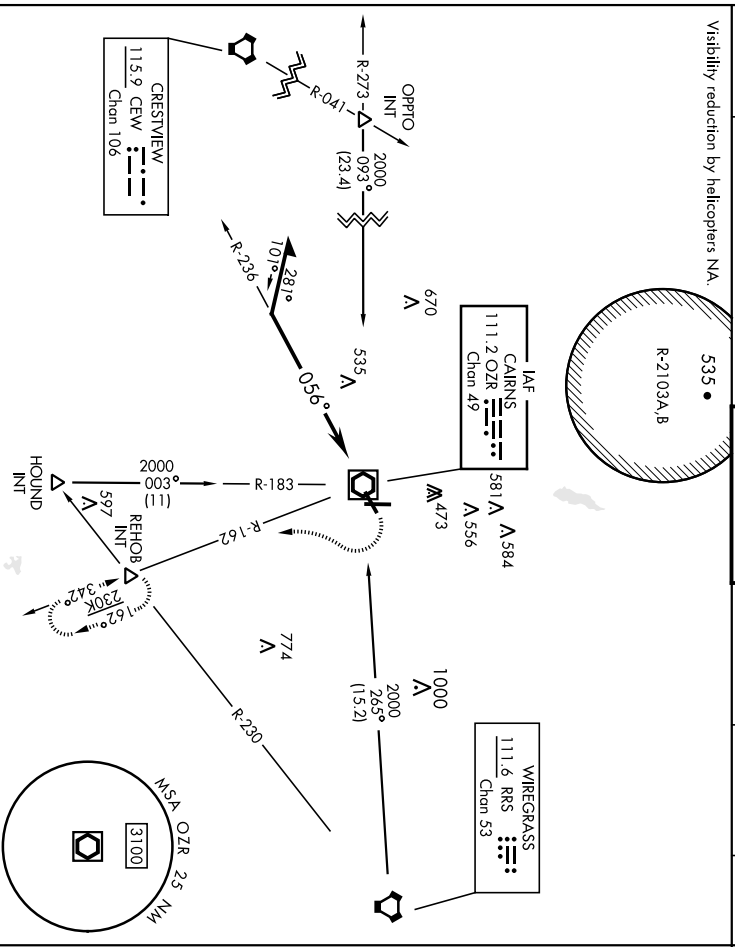


VOR RWY 24

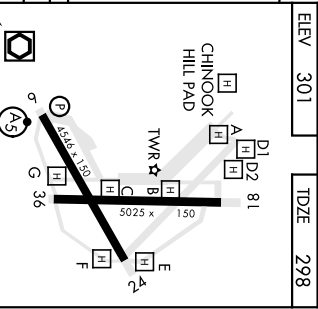
VOR/DWE OZR Chon 49	APCH CRS 056°	Rwy/Ldg TDZE Elev 298	APt Elev 301	AL-577 [USA]	MAISR A5	MISSED APPROACH: Climbing right turn to 2000 via OZR VOR/DWE R-162 to REHOB INT and hold or when directed by ATIS climbing left turn to 2000 heading 290° within 10 NM (RADAR required).
------------------------	------------------	-----------------------------	--------------	--------------	-------------	--

ATIS 111.2 316.15	APR CON 125.4 133.75 133.45 121.1	327.125 270.35 239.275 319.225	(021°-120°) (121°-21°) (220°-340°) (341°-020°)	TOWER * 135.2 (CTAF) 248.55	GND CON 121.9 288.25	CINCL DEL 118.075 380.1	PAR
-------------------------	---	---	---	-----------------------------------	----------------------------	-------------------------------	-----

Visibility reduction by helicopters NA.



2000	REHOB INT OZR R-162	Remain within 10 NM	VOR/DWE			
CATEGORY		A	B	C	D	
S-6 *	840/24	542 (600-½)	840/60	542 (600-1%)		
CIRCLING **	840-1	539 (600-1)	900-1½ 599 (600-1½)	900-2 599 (600-2)		



FORT NOVOSHEL, ALABAMA 31° 16'N-85° 43'W

CAIRNS AAF (KOZR)
VOR Rwy 6

HRL Rwy 6-24
MRL Rwy 18-36