

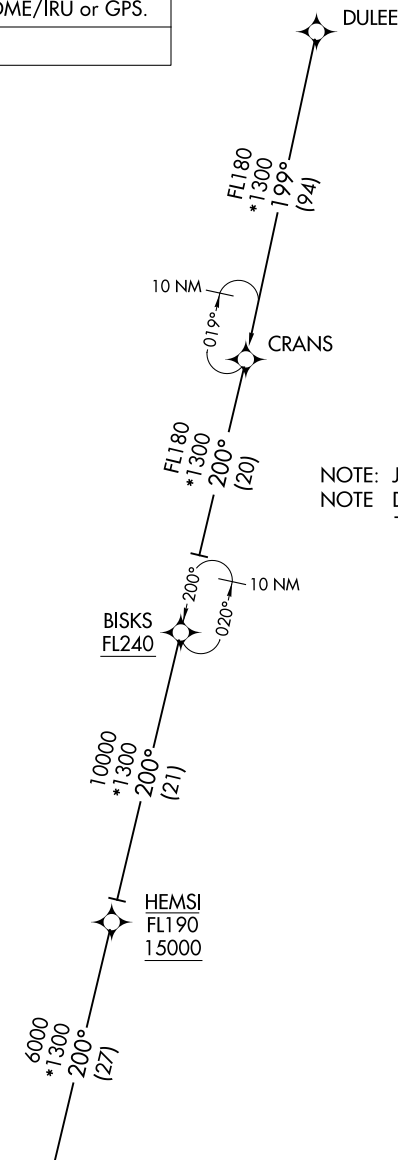
CLMNT TWO ARRIVAL (RNAV) Transition Routes

WEST PALM BEACH, FLORIDA

RNAV 1 - DME/DME/IRU or GPS.

RADAR required.

PALM BEACH APP CON
 124.6 317.4
 F45 CTAF
 123.075
 PBI D-ATIS
 123.75



NOTE: Jet aircraft only.
 NOTE: Do not file CRANS, BISKI Transitions-
 To be assigned by ATC

SE-3, 22 FEB 2024 to 21 MAR 2024

SE-3, 22 FEB 2024 to 21 MAR 2024

See following page for arrival routes.



NOTE: Chart not to scale.

(CONTINUED ON FOLLOWING PAGE)

BISKI TRANSITION (BISKI.CLMNT2)
CRANS TRANSITION (CRANS.CLMNT2)
DULEE TRANSITION (DULEE.CLMNT2)

CLMNT TWO ARRIVAL (RNAV) Arrival Routes

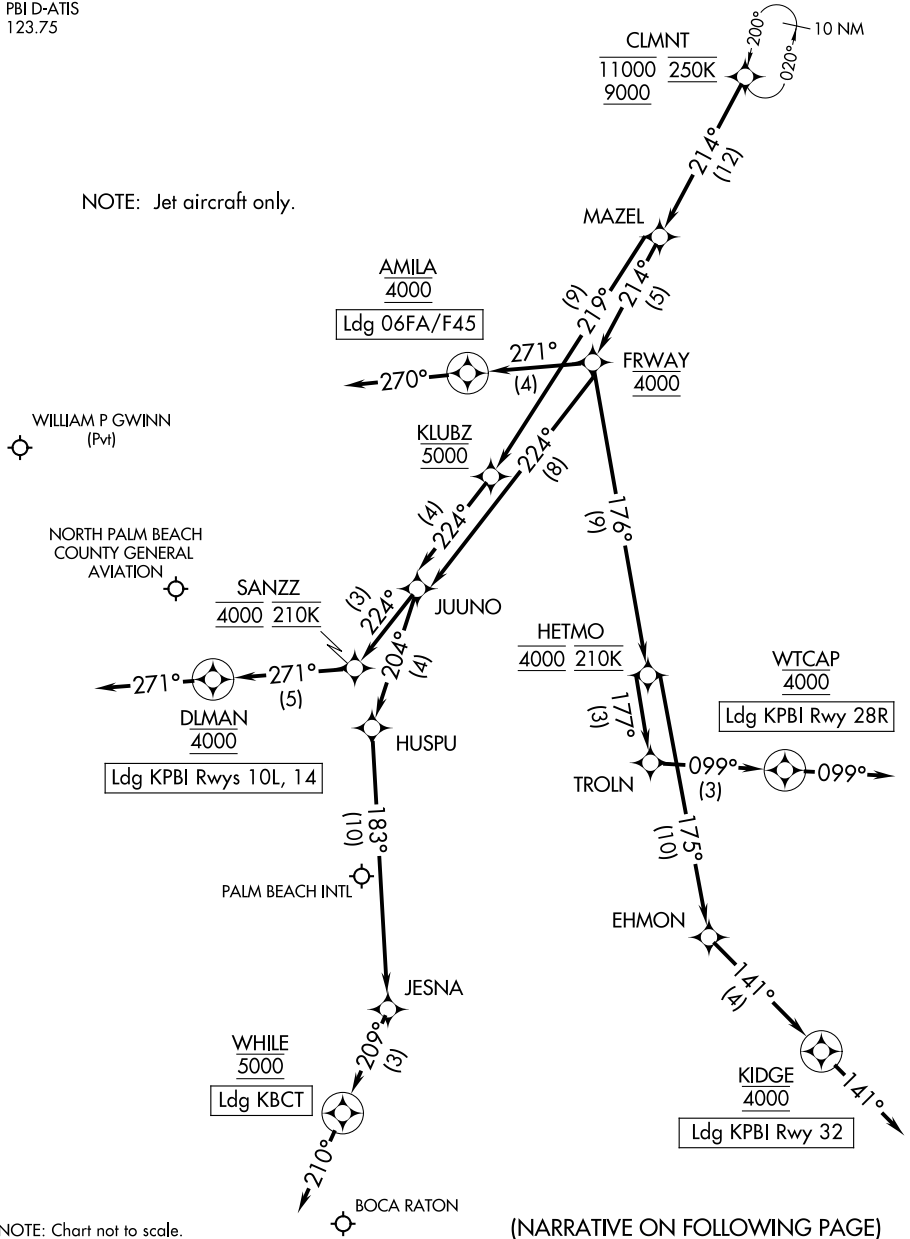
WEST PALM BEACH, FLORIDA

PALM BEACH APP CON
124.6 317.4
F45 CTAF
123.075
PBI D-ATIS
123.75

RNAV 1 - DME/DME/IRU or GPS.

RADAR required.

NOTE: Jet aircraft only.



NOTE: Chart not to scale.

(NARRATIVE ON FOLLOWING PAGE)

SE-3, 22 FEB 2024 to 21 MAR 2024

SE-3, 22 FEB 2024 to 21 MAR 2024

ARRIVAL ROUTE DESCRIPTION

KPBI: From CLMNT on track 214° to MAZEL.

LANDING KPBI RUNWAYS 10L, 14: From MAZEL on track 214° to cross FRWAY at 4000, then on track 224° to JUUNO, then on track 224° to cross SANZZ at 4000 and at 210K, then on track 271° to cross DLMAN at 4000, then on track 271°. Expect RADAR vectors to final approach course.

LANDING KPBI RUNWAY 28R: From MAZEL on track 214° to cross FRWAY at 4000, then on track 176° to cross HETMO at 4000 and at 210K, then on track 177° to TROLN, then on track 099° to cross WTCAP at 4000, then on track 099°. Expect RADAR vectors to final approach course.

LANDING KPBI RUNWAY 32: From MAZEL on track 214° to cross FRWAY at 4000, then on track 176° to cross HETMO at 4000 and at 210K, then on track 175° to EHMON, then on track 141° to cross KIDGE at 4000, then on track 141°. Expect RADAR vectors to final approach course.

LANDING 06FA/F45: From CLMNT on track 214° to MAZEL, then on track 214° to cross FRWAY at 4000, then on track 271° to cross AMILA at 4000, then on heading 270°. Expect RADAR vectors to final approach course.

LANDING KBCT: From CLMNT on track 214° to MAZEL, then on track 219° to cross KLUBZ at 5000, then on track 224° to JUUNO, then on track 204° to HUSPU, then on track 183° to JESNA, then on track 209° to cross WHILE at 5000, then on heading 210°. Expect RADAR vectors to final approach course.

SE-3, 22 FEB 2024 to 21 MAR 2024

SE-3, 22 FEB 2024 to 21 MAR 2024

CPTAN THREE ARRIVAL (RNAV) Transition Routes

WEST PALM BEACH, FLORIDA

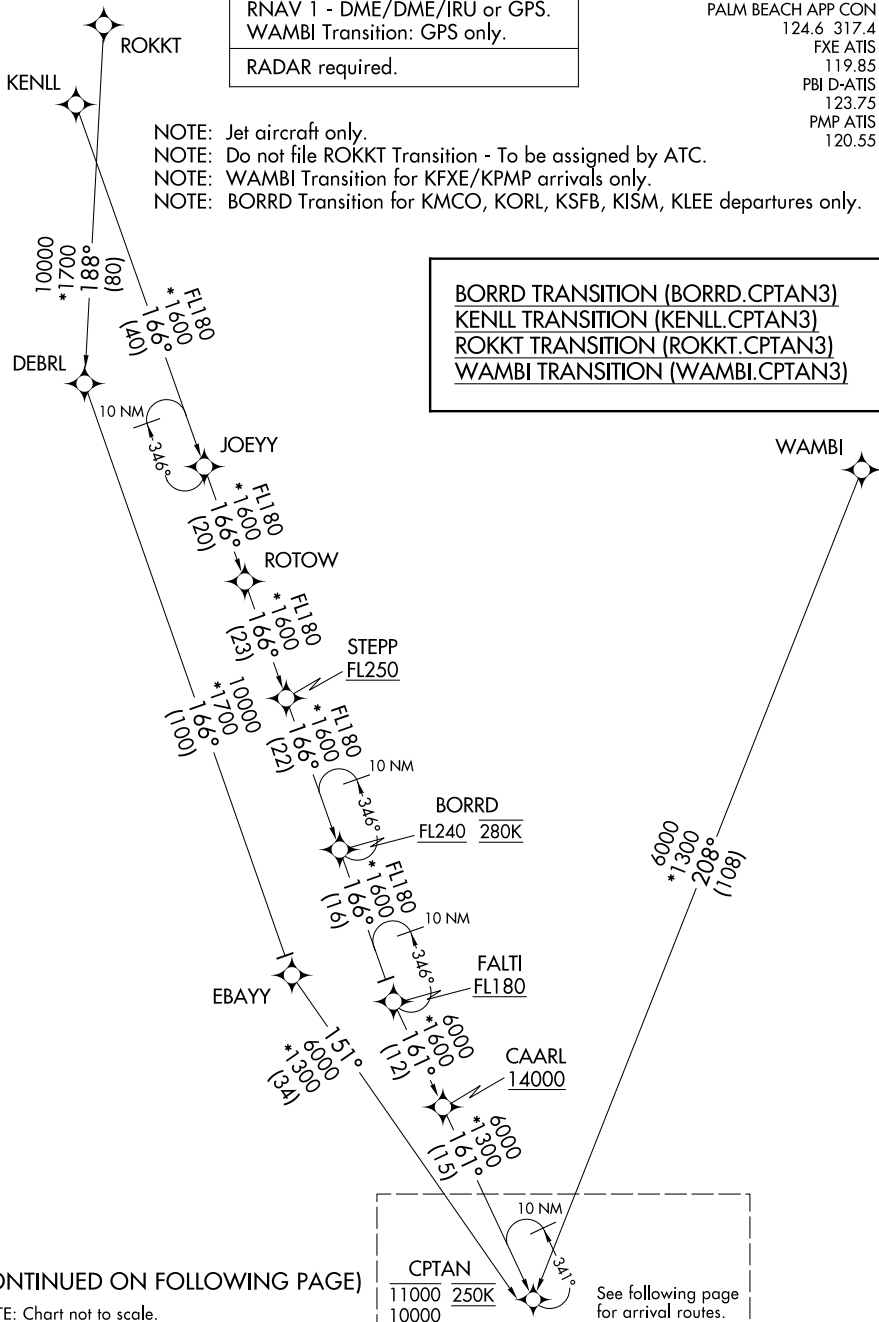
RNAV 1 - DME/DME/IRU or GPS.
WAMBI Transition: GPS only.

RADAR required.

PALM BEACH APP CON
124.6 317.4
FXE ATIS
119.85
PBI D-ATIS
123.75
PMP ATIS
120.55

- NOTE: Jet aircraft only.
- NOTE: Do not file ROKKT Transition - To be assigned by ATC.
- NOTE: WAMBI Transition for KFEX/KPMP arrivals only.
- NOTE: BORRD Transition for KMCO, KORL, KSF, KISM, KLEE departures only.

BORRD TRANSITION (BORRD.CPTAN3)
KENLL TRANSITION (KENLL.CPTAN3)
ROKKT TRANSITION (ROKKT.CPTAN3)
WAMBI TRANSITION (WAMBI.CPTAN3)



(CONTINUED ON FOLLOWING PAGE)

NOTE: Chart not to scale.

CPTAN
 11000 250K
 10000

See following page for arrival routes.

SE-3, 22 FEB 2024 to 21 MAR 2024

SE-3, 22 FEB 2024 to 21 MAR 2024

CPTAN THREE ARRIVAL (RNAV) Transition Routes

WEST PALM BEACH, FLORIDA

CPTAN THREE ARRIVAL (RNAV) Arrival Routes

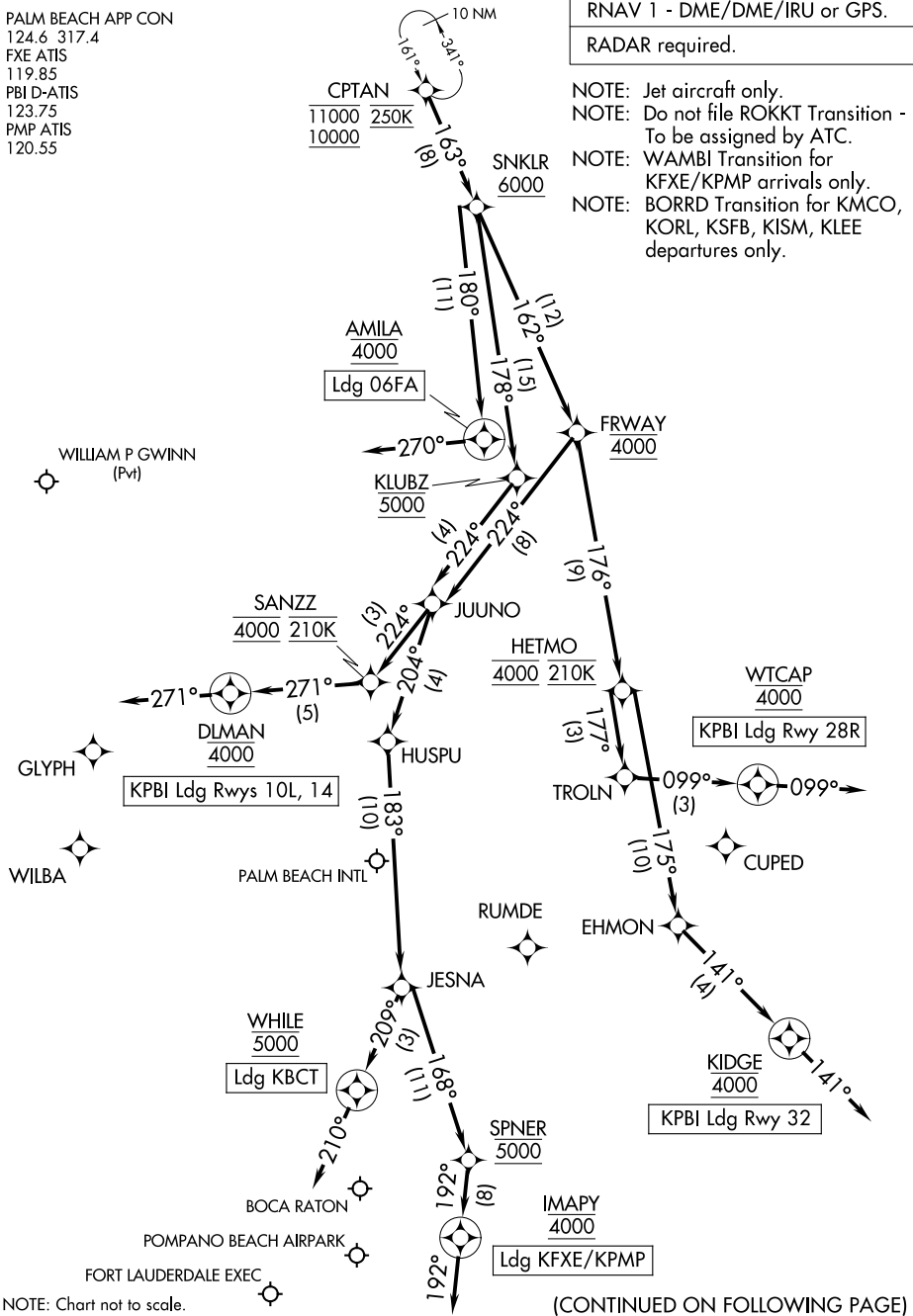
WEST PALM BEACH, FLORIDA

PALM BEACH APP CON
124.6 317.4
FXE ATIS
119.85
PBI D-ATIS
123.75
PMP ATIS
120.55

RNAV 1 - DME/DME/IRU or GPS.

RADAR required.

- NOTE: Jet aircraft only.
- NOTE: Do not file ROKKT Transition - To be assigned by ATC.
- NOTE: WAMBI Transition for KFEX/KPMP arrivals only.
- NOTE: BORRD Transition for KMCO, KORL, KSFB, KISM, KLEE departures only.



NOTE: Chart not to scale.

(CONTINUED ON FOLLOWING PAGE)

CPTAN THREE ARRIVAL (RNAV) Arrival Routes

WEST PALM BEACH, FLORIDA

SE-3, 22 FEB 2024 to 21 MAR 2024

SE-3, 22 FEB 2024 to 21 MAR 2024

ARRIVAL ROUTE DESCRIPTION

KPBI: From CPTAN on track 163° to cross SNKLR at or above 6000.

LANDING KPBI RUNWAYS 10L, 14: From SNKLR on track 162° to cross FRWAY at 4000, then on track 224° to JUUNO, then on track 224° to cross SANZZ at 4000 and at 210K, then on track 271° to cross DLMAN at 4000, then on track 271°. Expect RADAR vectors to final approach course.

LANDING KPBI RUNWAY 28R: From SNKLR on track 162° to cross FRWAY at 4000, then on track 176° to cross HETMO at 4000 and at 210K, then on track 177° to TROLN, then on track 099° to cross WTCAP at 4000, then on track 099°. Expect RADAR vectors to final approach course.

LANDING KPBI RUNWAY 32: From SNKLR on track 162° to cross FRWAY at 4000, then on track 176° to cross HETMO at 4000 and at 210K, then on track 175° to EHMON, then on track 141° to cross KIDGE at 4000, then on track 141°. Expect RADAR vectors to final approach course.

LANDING 06FA: From CPTAN on track 163° to cross SNKLR at or above 6000, then on track 180° to cross AMILA at 4000, then on heading 270°. Expect RADAR vectors to final approach course.

LANDING KBCT: From CPTAN on track 163° to cross SNKLR at or above 6000, then on track 178° to cross KLUBZ at 5000, then on track 224° to JUUNO, then on track 204° to HUSPU, then on track 183° to JESNA, then on track 209° to cross WHILE at 5000, then on heading 210°. Expect RADAR vectors to final approach course.

LANDING KFXE/KPMP: From CPTAN on track 163° to cross SNKLR at or above 6000, then on track 178° to cross KLUBZ at 5000, then on track 224° to JUUNO, then on track 204° to HUSPU, then on track 183° to JESNA, then on track 168° to cross SPNER at 5000, then on track 192° to cross IMAPY at 4000, then on track 192°. Expect RADAR vectors to final approach course.

SE-3, 22 FEB 2024 to 21 MAR 2024

SE-3, 22 FEB 2024 to 21 MAR 2024

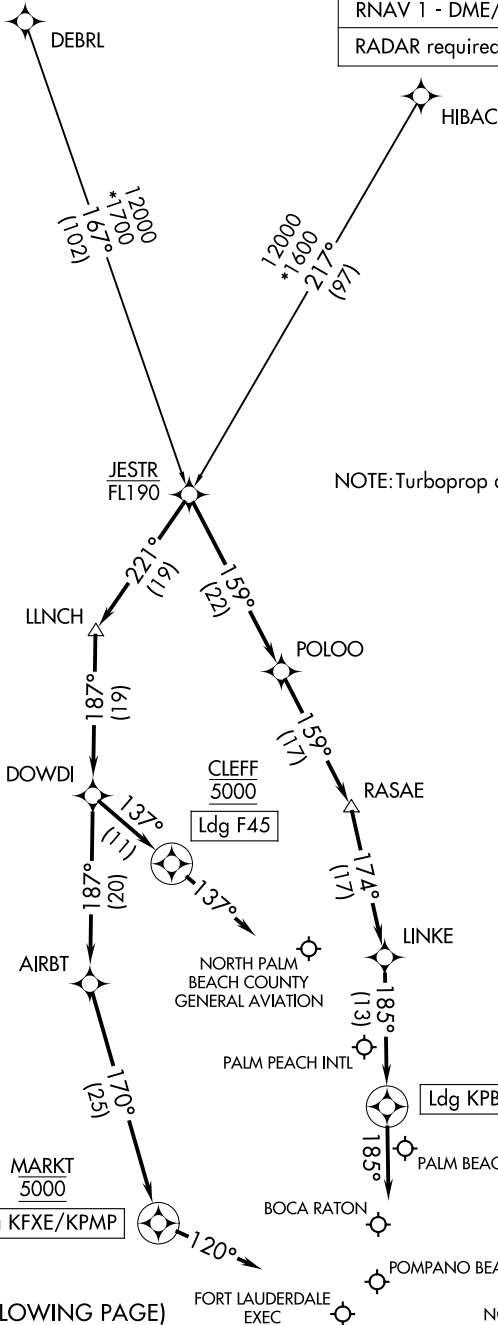
JESTR ONE ARRIVAL (RNAV)

WEST PALM BEACH, FLORIDA

PALM BEACH APP CON
 124.6 317.4
 FXE ATIS
 119.85
 PBI D-ATIS
 123.75
 PMP ATIS
 120.55

RNAV 1 - DME/DME/IRU or GPS.

RADAR required.



NOTE: Turboprop aircraft only.

(NARRATIVE ON FOLLOWING PAGE)

NOTE: Chart not to scale.

JESTR ONE ARRIVAL (RNAV)

WEST PALM BEACH, FLORIDA

ARRIVAL ROUTE DESCRIPTION

DEBRL TRANSITION (DEBRL.JESTR1)

HIBAC TRANSITION (HIBAC.JESTR1)

LANDING KPBI/KLNA/KBCT: From JESTR on track 159° to POLOO, then on track 159° to RASAE, then on track 174° to LINKE, then on track 185° to cross JESNA at 5000, then on heading 185° or as assigned by ATC. Expect RADAR vectors to final approach course.

LANDING F45: From JESTR on track 221° to LLNCH, then on track 187° to DOWDI, then on track 137° to cross CLEFF at 5000, then on track 137°. Expect RADAR vectors to final approach course.

LANDING KFXE/KPMP: From JESTR on track 221° to LLNCH, then on track 187° to DOWDI, then on track 187° to AIRBT, then on track 170° to cross MARKET at 5000, then on heading 120° or as assigned by ATC. Expect RADAR vectors to final approach course.

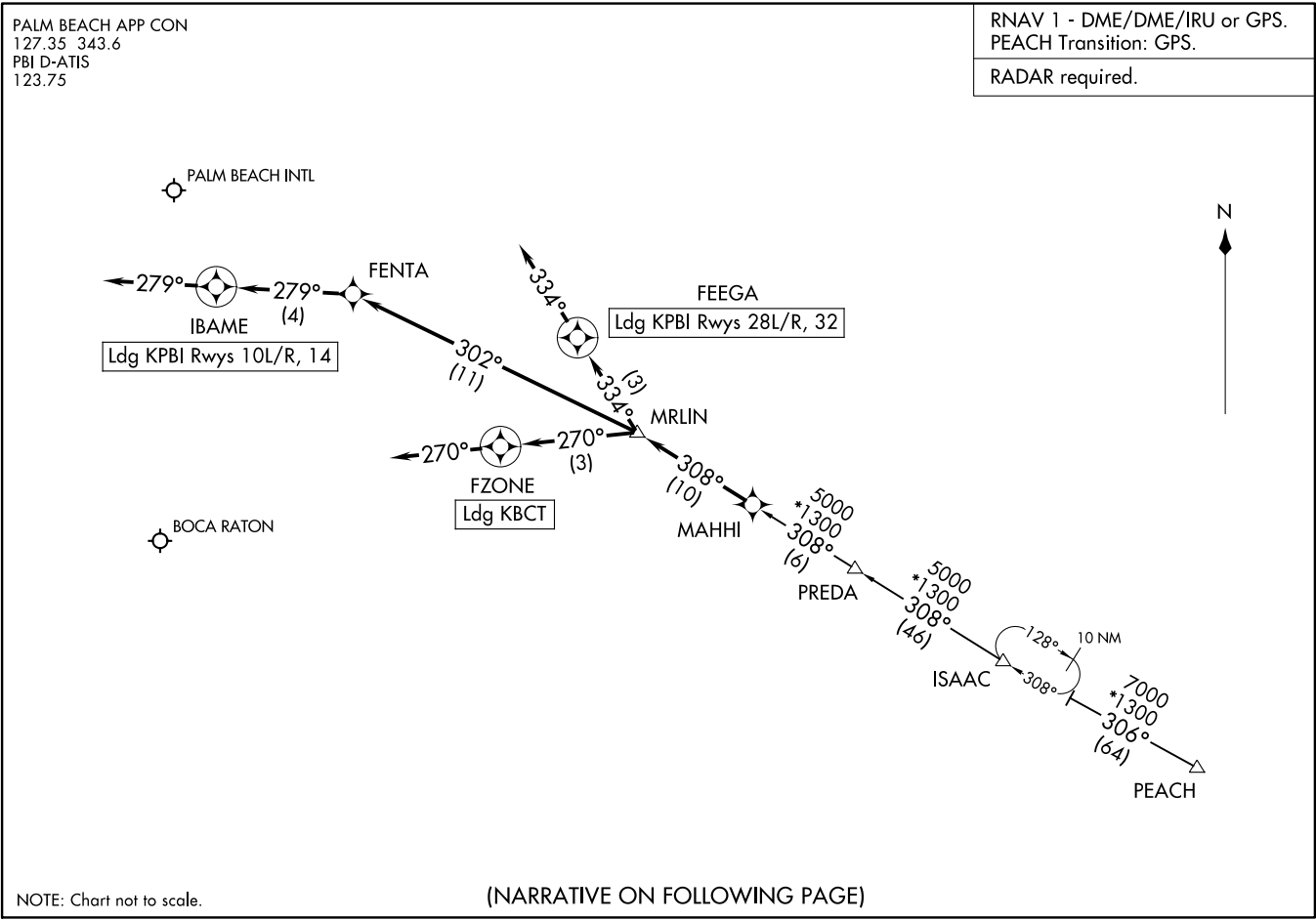
SE-3, 22 FEB 2024 to 21 MAR 2024

SE-3, 22 FEB 2024 to 21 MAR 2024

RNAV 1 - DME/DME/IRU or GPS.
PEACH Transition: GPS.
RADAR required.

MAHHI THREE ARRIVAL (RNAV)
(MAHHI, MAHHI3) 19MAY22
WEST PALM BEACH, FLORIDA

(MAHHI, MAHHI3) 23222
MAHHI THREE ARRIVAL (RNAV)
AL-449 (FAA)
WEST PALM BEACH, FLORIDA



NOTE: Chart not to scale.

(NARRATIVE ON FOLLOWING PAGE)

ARRIVAL ROUTE DESCRIPTION

ISAAC TRANSITION (ISAAC.MAHHI3)
PEACH TRANSITION (PEACH.MAHHI3)
PREDA TRANSITION (PREDA.MAHHI3)

KPBI: From MAHHI on track 308° to MRLIN.

LANDING KPBI RUNWAYS 10L/R, 14: From MRLIN on track 302° to FENTA, then on track 279° to IBAME, then on track 279°. Expect RADAR vectors to final approach course.

LANDING KPBI RUNWAYS 28L/R, 32: From MRLIN on track 334° to FEEGA, then on track 334°. Expect RADAR vectors to final approach course.

LANDING KBCT: From MAHHI on track 308° to MRLIN, then on track 270° to FZONE, then on track 270°. Expect RADAR vectors to final approach course.

SE-3, 22 FEB 2024 to 21 MAR 2024

SE-3, 22 FEB 2024 to 21 MAR 2024

PALM BEACH APP CON
124.6 317.4
PBI D-ATIS
123.75

MELBOURNE
115.85 MLB
Chan 105(Y)
N28°06.32'-W80°38.12'

L-23-24, H-8

164°
(65)

NOTE: RADAR required.
NOTE: DME required.
NOTE: Turboprop and prop aircraft only.

RASAE
N27°06.01'
W80°09.44'
4000

174°
(25)

WILLIAM P GWINN (Pvt)

PALM BEACH
115.7 PBI
Chan 104
N26°40.80'
W80°05.19'

PALM BEACH INTL

Ldg all airports

BOCA RATON

PALM BEACH COUNTY PARK

NOTE: Chart not to scale.

ARRIVAL ROUTE DESCRIPTION

LANDING ALL AIRPORTS: From over MELBOURNE VOR/DME (MLB) R-164 to cross RASAE at or above 4000, then on PALM BEACH VORTAC (PBI) R-354 to PBI VORTAC. Expect RADAR vectors to final approach course.

(STOOP.STOOP3) 23222 STOOP THREE ARRIVAL

AL-449 (FAA)

WEST PALM BEACH, FLORIDA

PALM BEACH APP CON
124.6 317.4
BCT AWOS-3
121.125
PBI D-ATIS
123.75

MELBOURNE
115.85 MLB
Chan 105 (Y)
N28°06.32' - W80°38.12'
L-24, H8

R-159
*16000
16000

NOTE: Jet aircraft only.
NOTE: DME required.
NOTE: RADAR required.

STOOP
N27°15.19'
W80°07.88'

WILLIAM P GWINN
(Pvt)

PALM BEACH INTL

BOCA RATON

(34)

R-359

PALM BEACH
115.7 PBI
Chan 104
N26°40.80' - W80°05.19'

6000

Ldg KPBI/KBCT/06FA

NOTE: Chart not to scale.

ARRIVAL ROUTE DESCRIPTION

MELBOURNE TRANSITION (MLB.STOOP3): From over MLB VOR/DME on MLB R-159 to STOOP.

LANDING ALL AIRPORTS: From STOOP on PALM BEACH VORTAC (PBI) R-359 to cross PBI VORTAC at 6000. Expect RADAR vectors.

STOOP THREE ARRIVAL (STOOP.STOOP3) 19MAY22

WEST PALM BEACH, FLORIDA

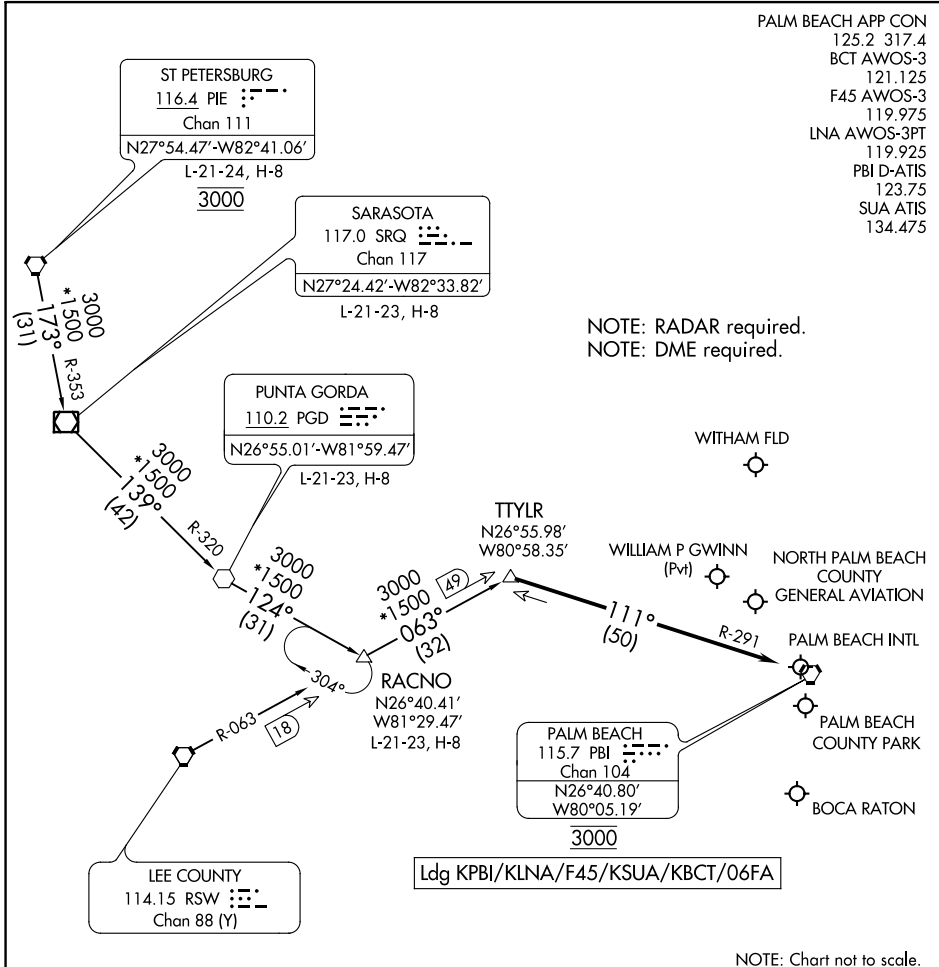
SE-3, 22 FEB 2024 to 21 MAR 2024

SE-3, 22 FEB 2024 to 21 MAR 2024

TTYLR THREE ARRIVAL

WEST PALM BEACH, FLORIDA

PALM BEACH APP CON
 125.2 317.4
 BCT AWOS-3
 121.125
 F45 AWOS-3
 119.975
 LNA AWOS-3PT
 119.925
 PBI D-ATIS
 123.75
 SUA ATIS
 134.475



SE-3, 22 FEB 2024 to 21 MAR 2024

SE-3, 22 FEB 2024 to 21 MAR 2024

NOTE: Chart not to scale.

ARRIVAL ROUTE DESCRIPTION

PUNTA GORDA TRANSITION (PGD.TTYLR3): From over PGD VOR on PGD R-124 to RACNO, then on RSW R-063 to TTYLR, thence. . .

RACNO TRANSITION (RACNO.TTYLR3): From over RACNO on RSW R-063 to TTYLR, thence. . .

ST PETERSBURG TRANSITION (PIE.TTYLR3): From over PIE VORTAC on PIE R-173 and SRQ R-353 to SRQ VOR/DME, then on SRQ R-139 and PGD R-320 to PGD VOR, then on PGD R-124 to RACNO, then on RSW R-063 to TTYLR, thence. . .

LANDING ALL AIRPORTS: From TTYLR on PALM BEACH VORTAC (PBI) R-291 to cross PBI VORTAC at 3000. Expect RADAR vectors.

TTYLR THREE ARRIVAL

WEST PALM BEACH, FLORIDA

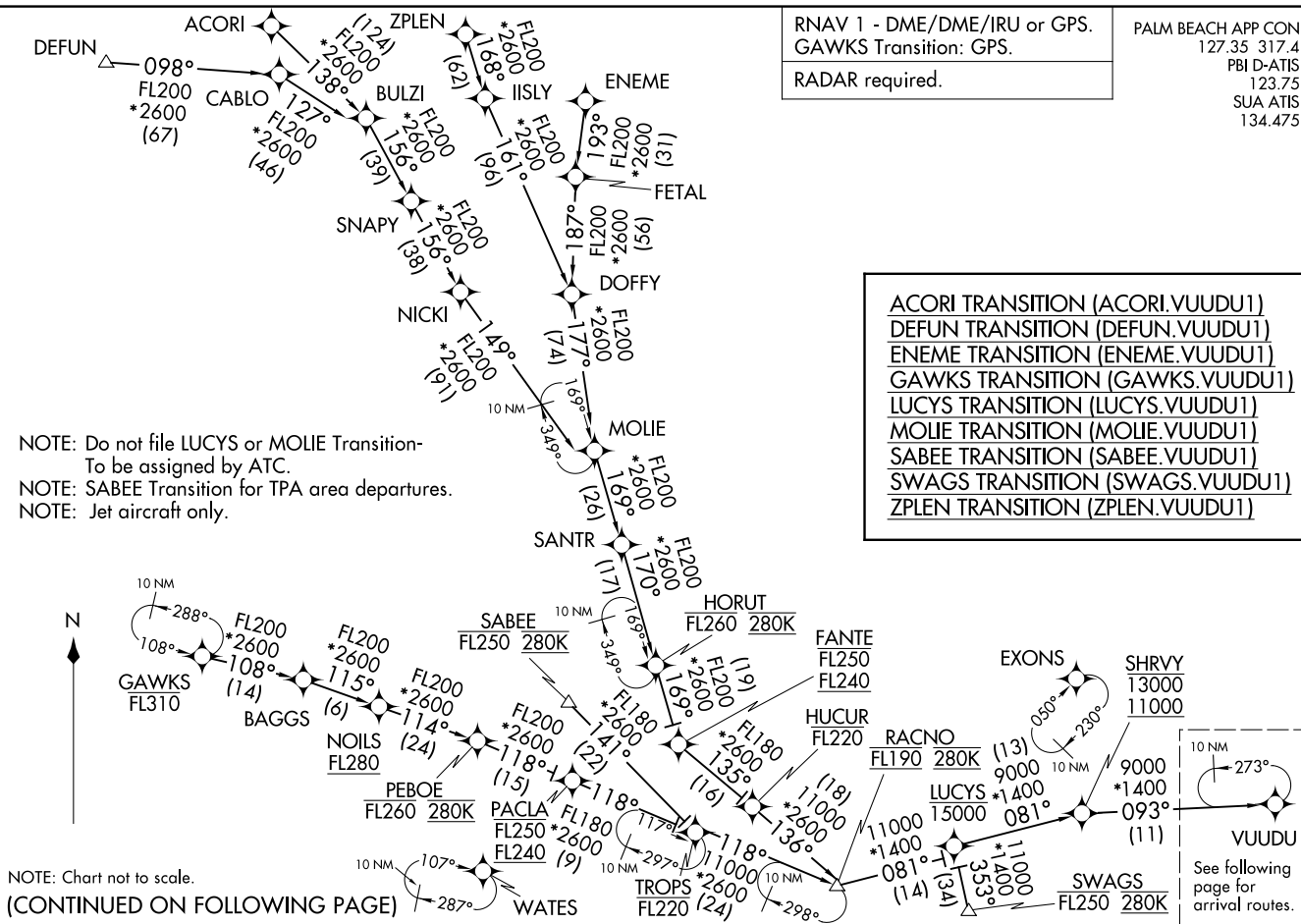
VUUDU ONE ARRIVAL (RNAV) Transition Routes
(VUUDU.VUUDU1) 19MAY22

WEST PALM BEACH, FLORIDA

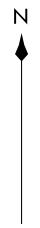
(VUUDU.VUUDU1) 22139
VUUDU ONE ARRIVAL (RNAV) Transition Routes

AL-449 (FAA)

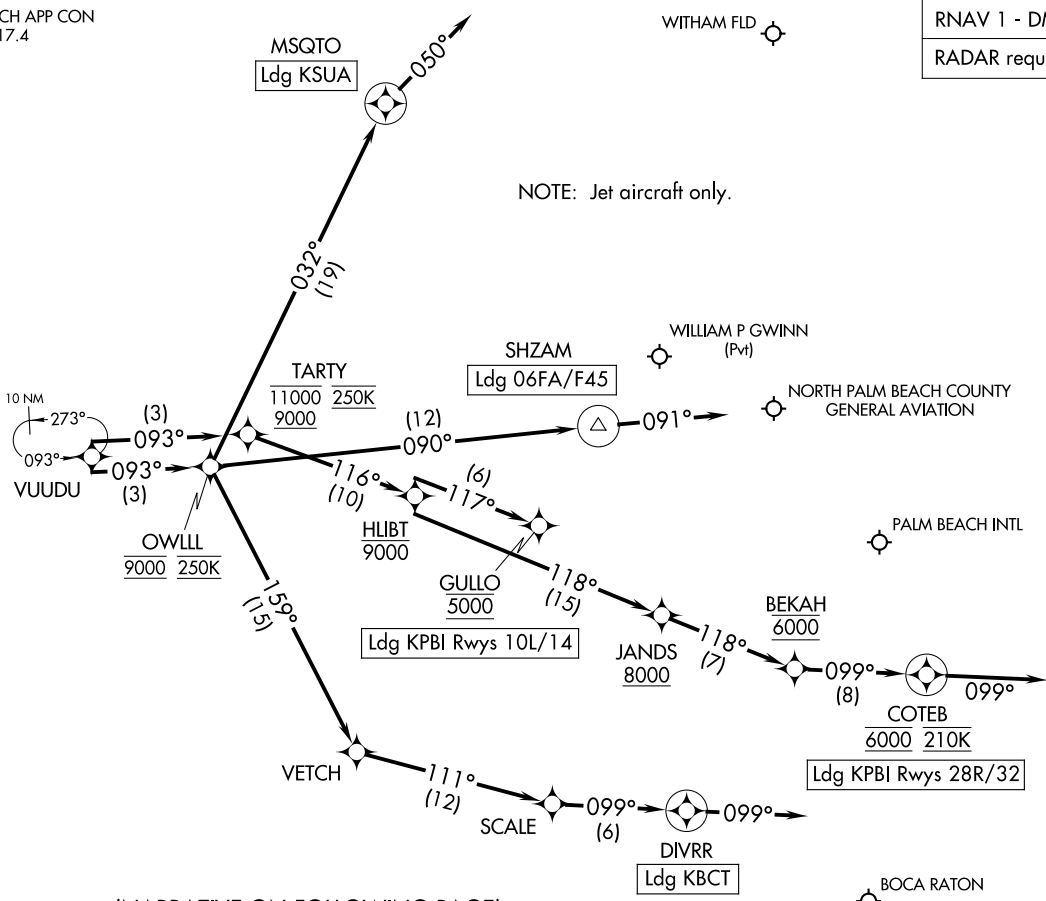
WEST PALM BEACH, FLORIDA



RNAV 1 - DME/DME/IRU or GPS.
RADAR required.



NOTE: Jet aircraft only.



(NARRATIVE ON FOLLOWING PAGE)

NOTE: Chart not to scale.

VUUDU ONE ARRIVAL (RNAV) Arrival Routes WEST PALM BEACH, FLORIDA
(VUUDU, VUUDU1) 19MAY22

(VUUDU, VUUDU1) 23222 AL-449 (FAA) Arrival Routes WEST PALM BEACH, FLORIDA

PALM BEACH APP CON
127.35 317.4
PBI D-ATIS
123.75
SUA ATIS
134-475

ARRIVAL ROUTE DESCRIPTION

KPBI: From VUUDU on track 093° to cross TARTY between 9000 and 11000 and at 250K, then on track 116° to cross HUBT at or below 9000.

LANDING KPBI RUNWAYS 10L, 14: From HUBT on track 117° to cross GULLO at 5000. Expect ILS or LOC RWY 10L, RNAV (RNP) Z RWY 14 approach.

LANDING KPBI RUNWAYS 28R, 32: From HUBT on track 118° to cross JANDS at or above 8000, then on track 118° to cross BEKAH at 6000, then on track 099° to cross COTEB at 6000 and at 210K, then on track 099°. Expect RADAR vectors to final approach course.

LANDING 06FA/F45: From VUUDU on track 093° to cross OWLLL at 9000 and at 250K, then on track 090° to SHZAM, then on heading 091°. Expect RADAR vectors to final approach course.

LANDING KBCT: From VUUDU on track 093° to cross OWLLL at 9000 and at 250K, then on track 159° to VETCH, then on track 111° to SCALE, then on track 099° to DIVRR, then on track 099°. Expect RADAR vectors to final approach course.

LANDING KSUA: From VUUDU on track 093° to cross OWLLL at 9000 and at 250K, then on track 032° to MSQTO, then on heading 050°. Expect RADAR vectors to final approach course.

SE-3, 22 FEB 2024 to 21 MAR 2024

SE-3, 22 FEB 2024 to 21 MAR 2024