

WAAS CH 99507 W01A	APP CRS 009°	Rwy ldg TDZE Apt Elev	5499 990 988
---------------------------------	------------------------	-----------------------------	---

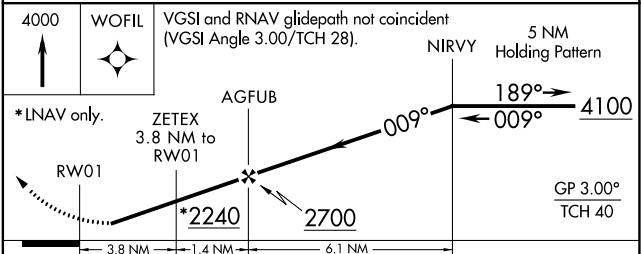
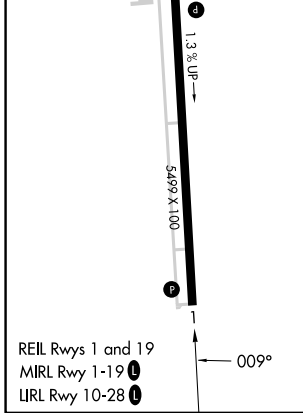
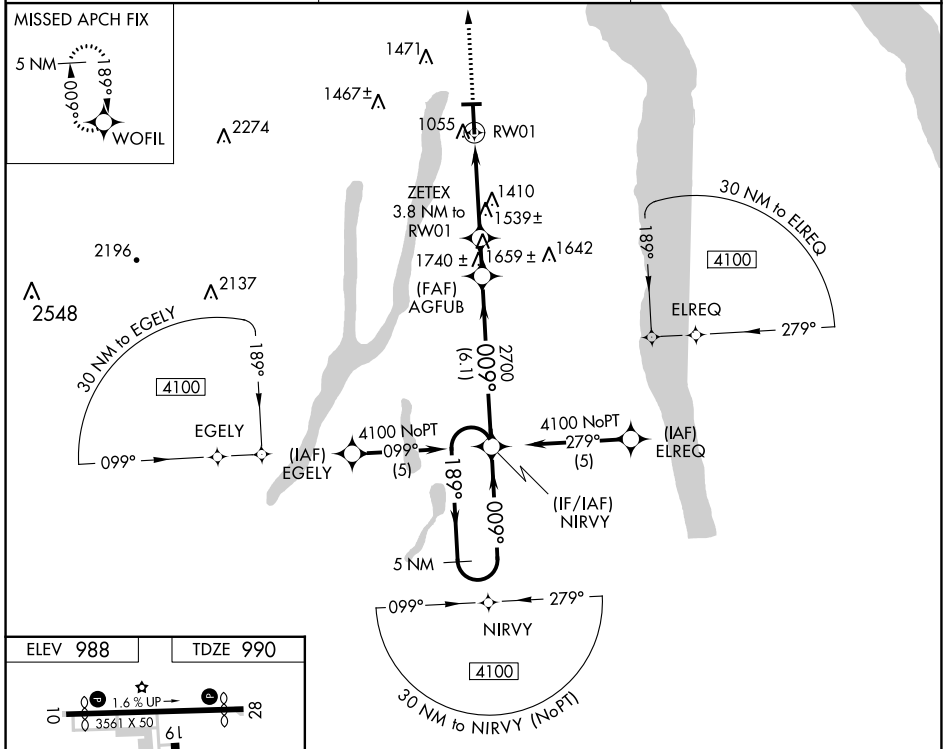
RNAV (GPS) RWY 1

PENN YAN/YATES CITY (P/E.O)

⚠ When local altimeter setting not received, use Elmira altimeter setting: increase LPV DA to 1433 feet and visibility all Cats ¼ SM; increase all MDA 80 feet and visibility LNAV Cat A and Circling Cat C ¼ SM and LNAV Cat C and D ½ SM. DME/DME RNP-0.3 NA. Helicopter visibility reduction below ¾ SM NA.

⚠ MISSED APPROACH: Climb to 4000 direct WOFIL and hold, continue climb in hold to 4000.

ASOS 121.175	ELMIRA APP CON* 124.3 257.8	UNICOM 123.0 (CTAF) 0
------------------------	---------------------------------------	---------------------------------



CATEGORY	A	B	C	D
LPV DA	1360-1¼ 370 (400-1¼)			
LNAV MDA	1800-1 810 (900-1)	1800-1¼ 810 (900-1¼)	1800-2¼ 810 (900-2¼)	1800-2½ 810 (900-2½)
CIRCLING	1800-1¼	812 (900-1¼)	1820-2½ 832 (900-2½)	1980-3 992 (1000-3)

NE-2, 22 FEB 2024 to 21 MAR 2024

NE-2, 22 FEB 2024 to 21 MAR 2024

APP CRS 189°	Rwy ldg 5499
	TDZE 968
	Apt Elev 988

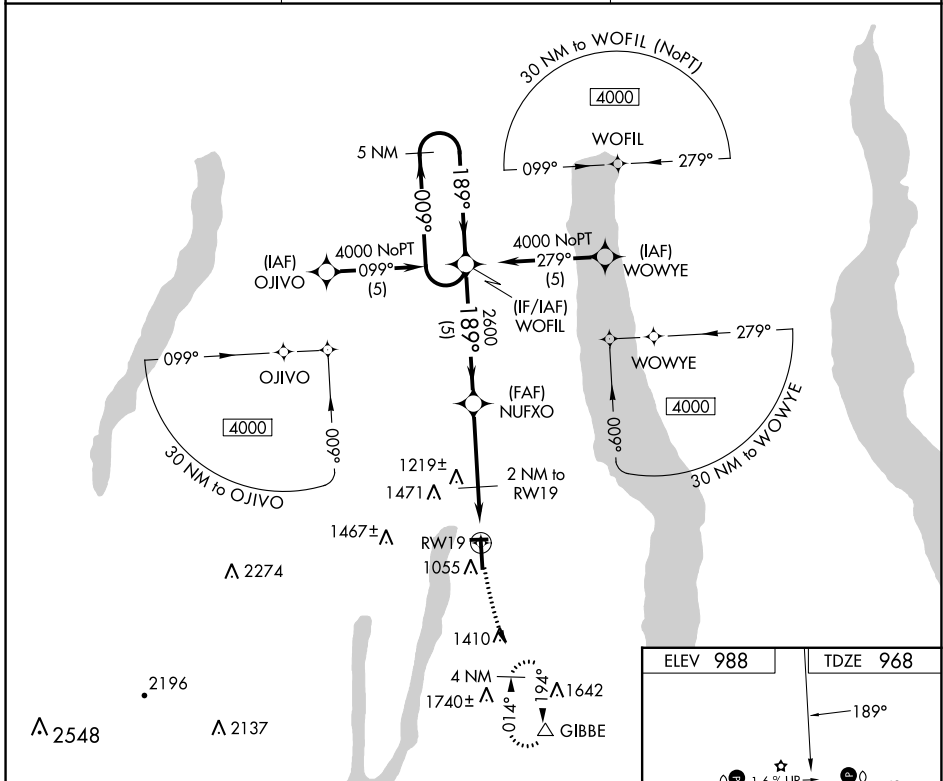
RNAV (GPS) RWY 19

PENN YAN/YATES CITY (P/E/O)

⚠ DME/DME RNP-0.3 NA. When local altimeter setting not received, use Elmira altimeter setting; increase all MDA 80 feet and visibility S-19 Cat C and D, and Circling Cat B and C ¼ SM.

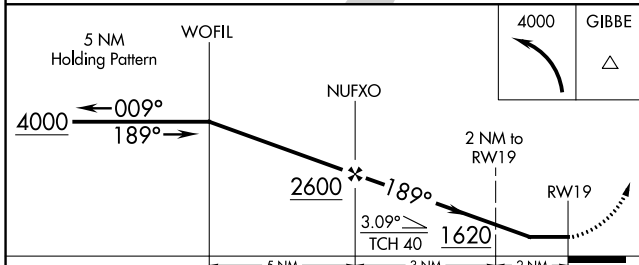
⚠ MISSED APPROACH: Climbing left turn to 4000 direct GIBBE and hold, continue climb-in-hold to 4000.

ASOS 121.175	ELMIRA APP CON * 124.3 257.8	UNICOM 123.0 (CTAF) 0
------------------------	--	---------------------------------



NE-2, 22 FEB 2024 to 21 MAR 2024

NE-2, 22 FEB 2024 to 21 MAR 2024



ELEV 988	TDZE 968
----------	----------

REIL Rwy 1 and 19
MIRL Rwy 1-19
LRL Rwy 10-28

CATEGORY	A	B	C	D
LNVA MDA	1400-1	432 (500-1)	1400-1¼ 432 (500-1¼)	1400-1½ 432 (500-1½)
CIRCLING	1500-1 512 (600-1)	1720-1 732 (800-1)	1820-2½ 832 (900-2½)	1980-3 992 (1000-3)