

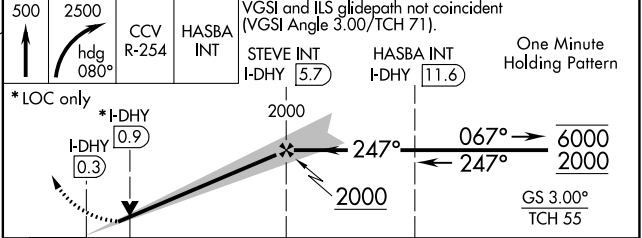
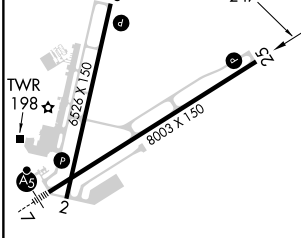
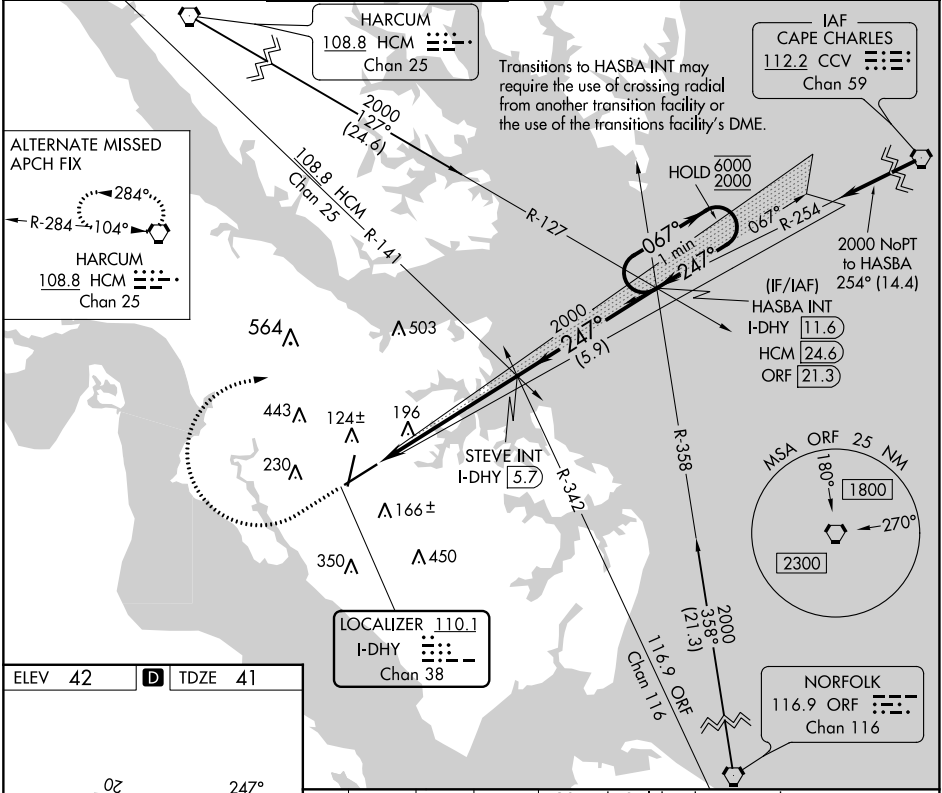
LOC/DME I-DHY	APP CRS	Rwy Idg	<b>8003</b>
<b>110.1</b>	<b>247°</b>	TDZE	<b>41</b>
Chan <b>38</b>		Apt Elev	<b>42</b>

# ILS or LOC RWY 25

NEWPORT NEWS/WILLIAMSBURG INTL (PHF)

**MISSED APPROACH:** Climb to 500 then climbing right turn to 2500 on heading 080° and CCV VORTAC R-254 to HASBA INT/I-DHY 11.6 DME and hold.

ATIS <b>128.65</b>	NORFOLK APP CON <b>125.7</b>	NEWPORT NEWS TOWER ★ <b>118.7 (CTAF) 257.9</b>	GND CON <b>121.9 348.6</b>	CLNC DEL <b>121.65 225.4</b>	UNICOM <b>122.95</b>
-----------------------	---------------------------------	---	-------------------------------	---------------------------------	-------------------------



REIL Rws 20 and 25				
HIRL Rws 2-20 and 7-25				
FAF to MAP 6 NM				
Knots	60	90	120	150
Min:Sec	6:00	4:00	3:00	2:24
<b>CIRCLING</b>	520-1 478 (500-1)	540-1 498 (500-1)	760-2 718 (800-2)	780-2¼ 738 (800-2¼)

NE-3, 22 FEB 2024 to 21 MAR 2024

NE-3, 22 FEB 2024 to 21 MAR 2024


LOC/DME I-PHF <b>110.1</b> Chan 38	APP CRS <b>067°</b>	Rwy Idg TDZE Apt Elev	<b>8003</b> <b>40</b> <b>42</b>
--	------------------------	-----------------------------	---------------------------------------

# ILS or LOC RWY 7

NEWPORT NEWS/WILLIAMSBURG INTL (PHF)

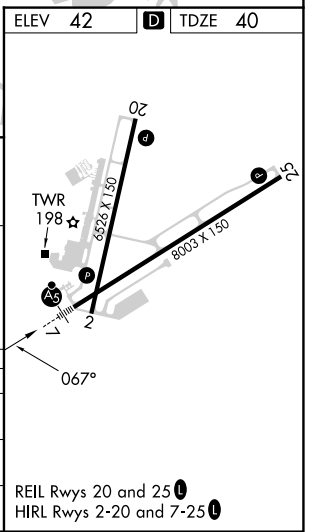
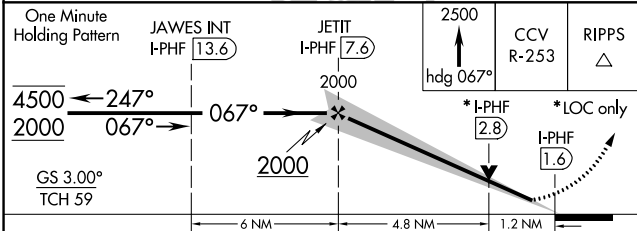
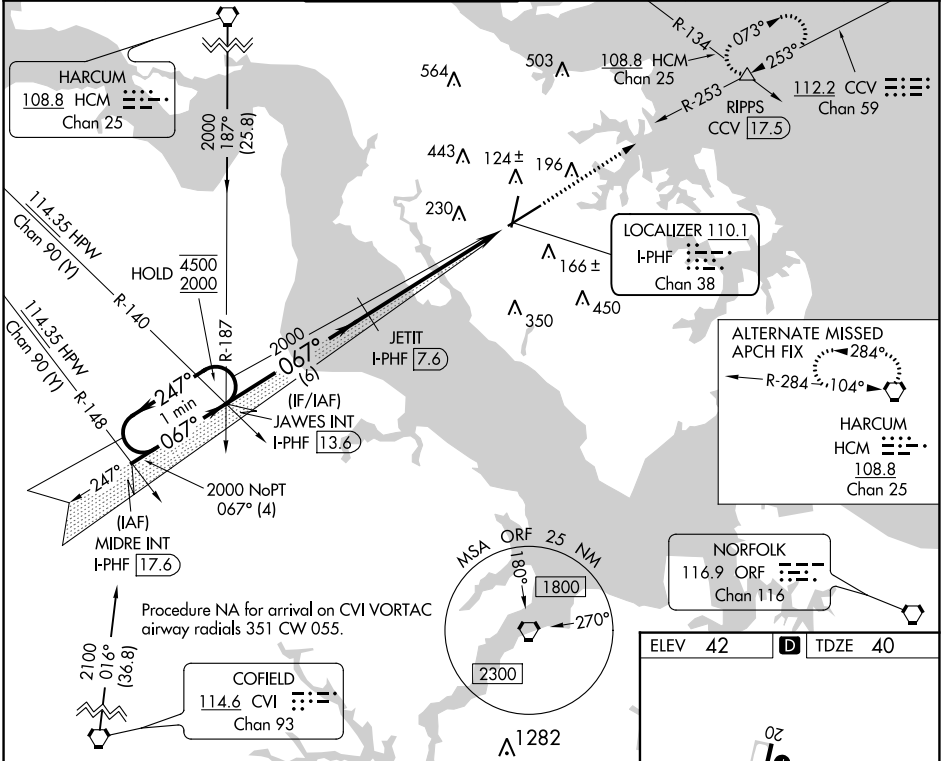
DME required.

**A** # RVR 1800 authorized with use of FD or AP or HUD to DA.

MALSR 

MISSED APPROACH: Climb to 2500 on heading 067° and on CCV VORTAC R-253 to RIPPS INT/CCV 17.5 DME and hold, continue climb-in-hold to 2500.

ATIS <b>128.65</b>	NORFOLK APP CON <b>125.7 335.625</b>	NEWPORT NEWS TOWER* <b>118.7 (CTAF) 0 257.9</b>	GND CON <b>121.9 348.6</b>	CLNC DEL <b>121.65 225.4</b>	UNICOM <b>122.95</b>
-----------------------	---	--	-------------------------------	---------------------------------	-------------------------



CATEGORY	A	B	C	D
S-ILS 7 #	240/24		200 (200-½)	
S-LOC 7	480/24	440 (500-½)	480/40	440 (500-¾)
<b>C</b> CIRCLING	520-1 478 (500-1)	540-1 498 (500-1)	760-2 718 (800-2)	780-2¼ 738 (800-2¼)

NE-3, 22 FEB 2024 to 21 MAR 2024

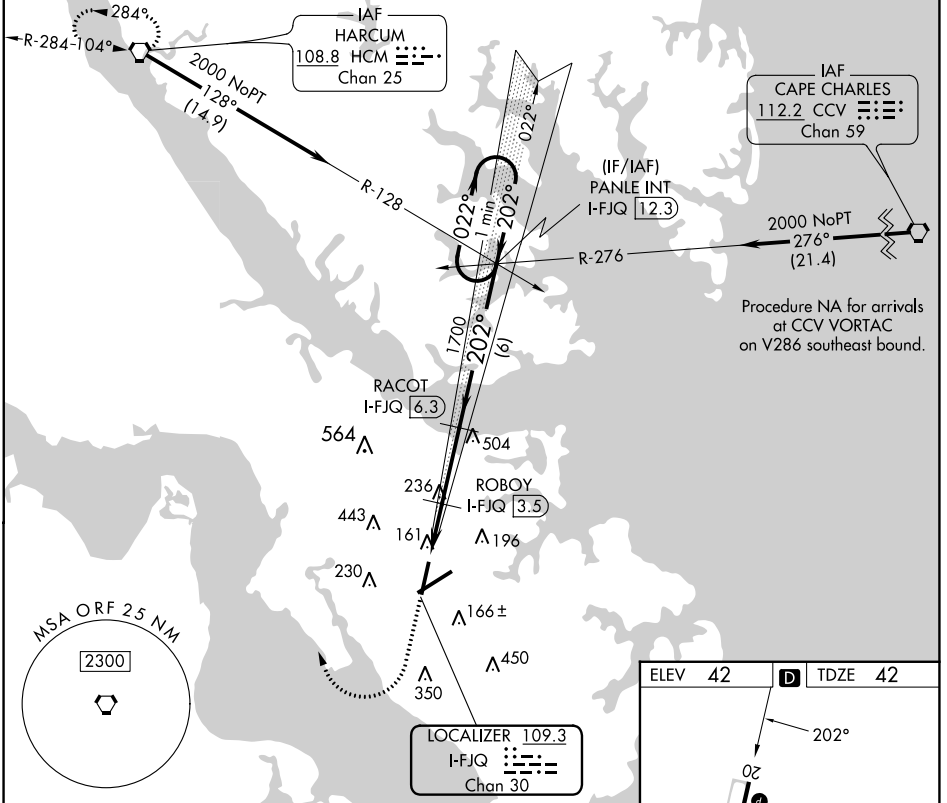
NE-3, 22 FEB 2024 to 21 MAR 2024

LOC/DME I-FJQ	APP CRS	Rwy Ldg	6526
109.3	202°	TDZE	42
Chan 30		Apt Elev	42

# LOC RWY 20

NEWPORT NEWS/WILLIAMSBURG INTL (PHF)

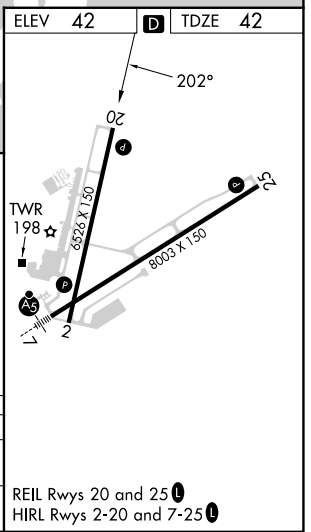
DME required.		NEWPORT NEWS TOWER★		GND CON	CLNC DEL	UNICOM
ATIS	NORFOLK APP CON	118.7 (CTAF)	257.9	121.9 348.6	121.65 225.4	122.95
Rwy 20 helicopter visibility reduction below 3/4 SM NA.		MISSED APPROACH: Climb to 2000 then right turn direct HCM VORTAC and hold.				



NE-3, 22 FEB 2024 to 21 MAR 2024

NE-3, 22 FEB 2024 to 21 MAR 2024

2000	HCM	RACOT I-FJQ 6.3	PANLE INT I-FJQ 12.3	One Minute Holding Pattern
ROBOY I-FJQ 3.5	ROBOY I-FJQ 3.5	ROBOY I-FJQ 3.5	ROBOY I-FJQ 3.5	ROBOY I-FJQ 3.5
I-FJQ 1.3	I-FJQ 2.3	I-FJQ 3.5	I-FJQ 6.3	I-FJQ 12.3
780	780	1700	202°	2000
1.1	1.2 NM	2.8 NM	6 NM	
CATEGORY	A	B	C	D
S-20	420-1	378 (400-1)		
CIRCLING	520-1 478 (500-1)	540-1 498 (500-1)	760-2 718 (800-2)	780-2 1/4 738 (800-2 1/4)



REIL Rwy 20 and 25  
HIRL Rwy 2-20 and 7-25

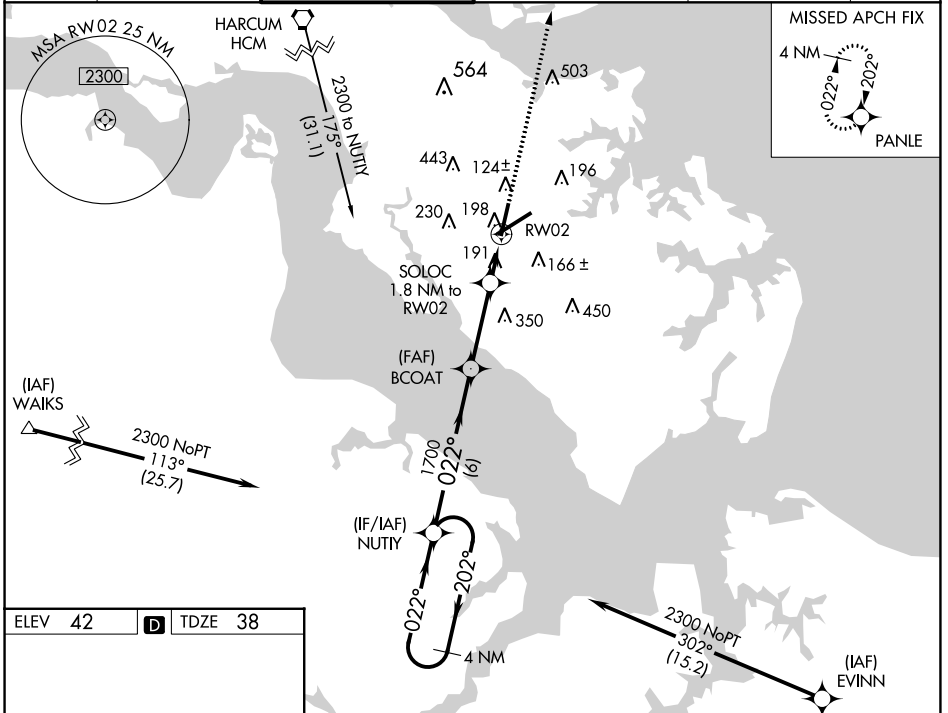
WAAS CH <b>61020</b> <b>W02A</b>	APP CRS <b>022°</b>	Rwy Idg TDZE Apt Elev	<b>6526</b> <b>38</b> <b>42</b>
--	------------------------	-----------------------------	---------------------------------------

# RNAV (GPS) RWY 2

NEWPORT NEWS/WILLIAMSBURG INTL (PHF)

RNP APCH.		MISSED APPROACH: Climb to 2000 direct PANLE and hold.			
For uncompensated Baro-VNAV systems, LNAV/VNAV NA below -11°C or above 54°C.					

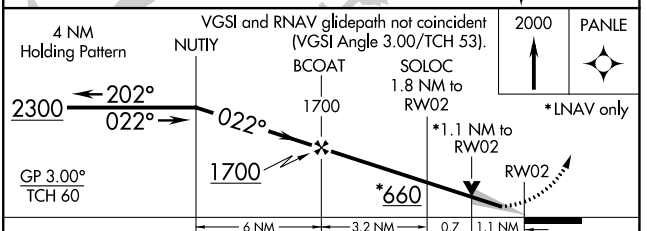
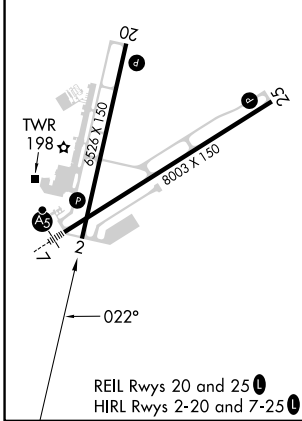
ATIS <b>128.65</b>	NORFOLK APP CON <b>125.7 335.625</b>	NEWPORT NEWS TOWER* <b>118.7(CTAF) 257.9</b>	GND CON <b>121.9 348.6</b>	CLNC DEL <b>121.65 225.4</b>	UNICOM <b>122.95</b>
-----------------------	---	---	-------------------------------	---------------------------------	-------------------------



NE-3, 22 FEB 2024 to 21 MAR 2024

NE-3, 22 FEB 2024 to 21 MAR 2024

ELEV 42	<b>D</b>	TDZE 38
---------	----------	---------



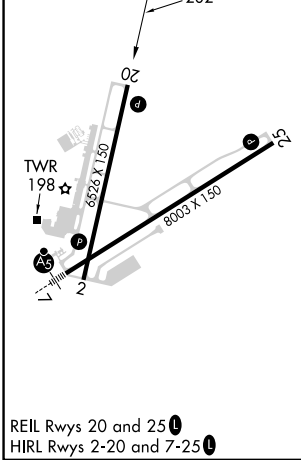
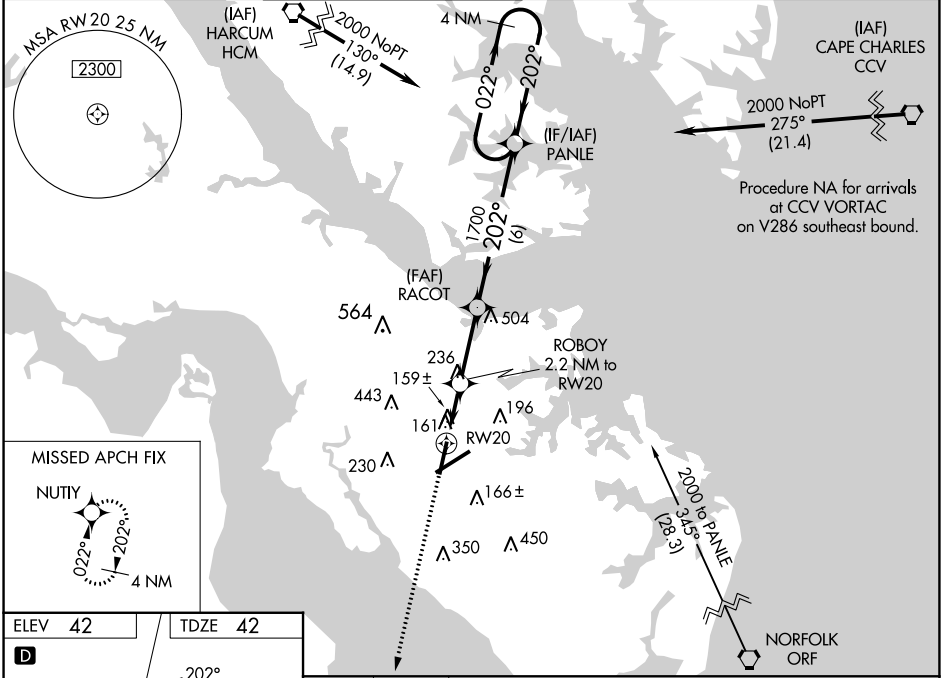
CATEGORY	A	B	C	D
LPV DA	241-1 203 (200-1)			
LNAV/DA VNAV	476-1½ 438 (500-1½)			
LNAV MDA	460-1 422 (500-1)		460-1¼ 422 (500-1¼)	
<b>C</b> CIRCLING	520-1 478 (500-1)	540-1 498 (500-1)	760-2 718 (800-2)	780-2¼ 738 (800-2¼)

WAAS CH 97420 W20A	APP CRS 202°	Rwy Idg TDZE Apt Elev	6526 42 42
--------------------------	-----------------	-----------------------------	------------------

# RNAV (GPS) RWY 20

NEWPORT NEWS/WILLIAMSBURG INTL (PHF)

RNP APCH.		MISSED APPROACH: Climb to 2300 direct NUTY and hold.			
<p><b>▼</b> For uncompensated Baro-VNAV systems, LNAV/VNAV NA below -11°C or above 54°C.</p> <p><b>▲</b> Rwy 20 helicopter visibility reduction below ¾ SM NA.</p>					
ATIS 128.65	NORFOLK APP CON 125.7 335.625	NEWPORT NEWS TOWER ★ 118.7(CTAF) 0 257.9	GND CON 121.9 348.6	CLNC DEL 121.65 225.4	UNICOM 122.95



ELEV 42	TDZE 42				
2300 NUTY			PANLE	4 NM Holding Pattern	
*LNAV only	*1.1 NM to RW20	RACOT 1700		2000	
	ROBOY 2.2 NM to RW20		202°	←202°	GP 3.00° TCH 42
		*780	1700		
	1.1 NM	1.1 NM	2.8 NM	6 NM	
CATEGORY	A	B	C	D	
LPV DA	379-1⅛		337 (400-1⅛)		
LNAV/VNAV DA	474-1½		432 (500-1½)		
LNAV MDA	440-1 398 (400-1)		440-1⅛ 398 (400-1⅛)		
CIRCLING	520-1 478 (500-1)	540-1 498 (500-1)	760-2 718 (800-2)	780-2¼ 738 (800-2¼)	

NE-3, 22 FEB 2024 to 21 MAR 2024

NE-3, 22 FEB 2024 to 21 MAR 2024

WAAS CH <b>45510</b> <b>W25A</b>	APP CRS <b>247°</b>	Rwy Idg <b>8003</b> TDZE <b>41</b> Apt Elev <b>42</b>
--	------------------------	---

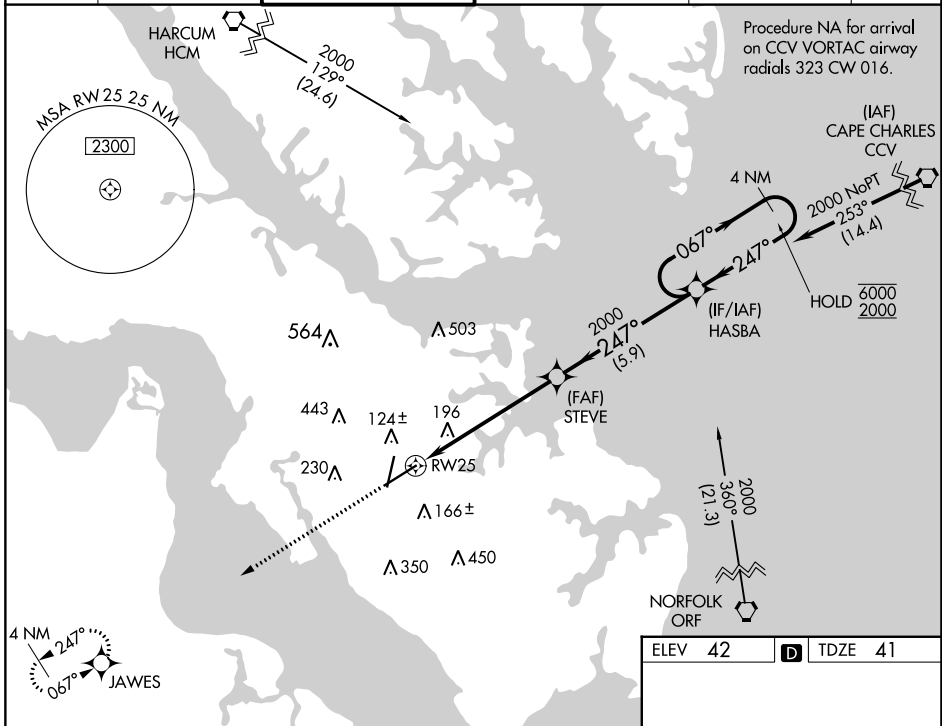
# RNAV (GPS) RWY 25

NEWPORT NEWS/WILLIAMSBURG INTL (PHF)

RNP APCH.  
 For uncompensated Baro-VNAV systems, LNAV/VNAV NA below -11° C or above 54° C.

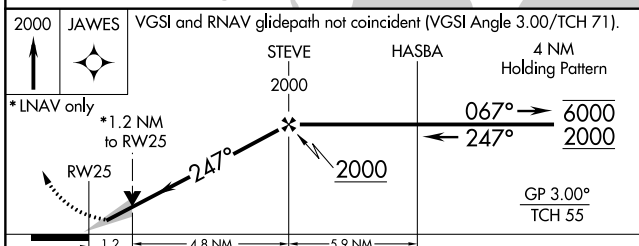
MISSED APPROACH: Climb to 2000 direct JAWES and hold.

ATIS <b>128.65</b>	NORFOLK APP CON <b>125.7</b>	<b>NEWPORT NEWS TOWER*</b> <b>118.7(CTAF) 257.9</b>	GND CON <b>121.9 348.6</b>	CLNC DEL <b>121.65 225.4</b>	UNICOM <b>122.95</b>
-----------------------	---------------------------------	--	-------------------------------	---------------------------------	-------------------------

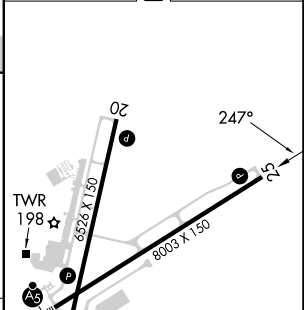


NE-3, 22 FEB 2024 to 21 MAR 2024

NE-3, 22 FEB 2024 to 21 MAR 2024



ELEV 42	D	TDZE 41
---------	---	---------



CATEGORY	A	B	C	D
LPV DA		241-3/4	200 (200-3/4)	
LNAV/VNAV DA		516-1 5/8	475 (500-1 5/8)	
LNAV MDA	480-1	439 (500-1)	480-1 1/4	439 (500-1 1/4)
CIRCLING	520-1 478 (500-1)	540-1 498 (500-1)	760-2 718 (800-2)	780-2 1/4 738 (800-2 1/4)

REIL Rwy 20 and 25   
 HIRL Rwy 2-20 and 7-25

