

LOC/DME I-RJG 110.75 Chan 44 (Y)	APP CRS 258°	Rwy Idg TDZE Apt Elev 7800 1126 1135
---	------------------------	--

ILS or LOC RWY 25L

PHOENIX SKY HARBOR INTL (PHX)

Autopilot coupled approach NA below 1925.
Simultaneous approach authorized with Rwy 26.

MALS

MISSED APPROACH: Climb to 3000 then climbing left turn to 5000 on heading 130° and PXR R-163 to POPKE/15 DME and hold.

D-ATIS 127.575	PHOENIX APP CON 128.65 353.9	PHOENIX TOWER 118.7 278.8 (Rwy 8-26) 120.9 254.3 (Rwy 7L-25R, 7R-25L)	GND CON 119.75 269.2 (N) 132.55 269.2 (S)	CLNC DEL 118.1 269.2	CPDLC
--------------------------	--	---	---	--------------------------------	-------

Λ 2358

DME or RADAR REQUIRED

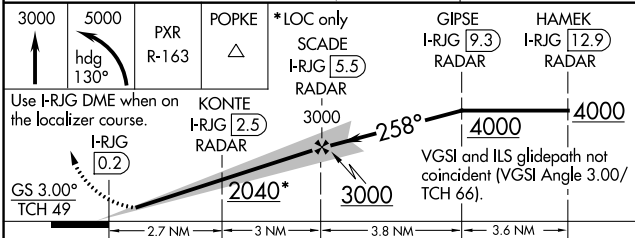
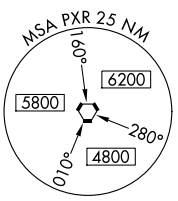
LOCALIZER 110.75
I-RJG
Chan 44 (Y)

PHOENIX 115.6 PXR
Chan 103

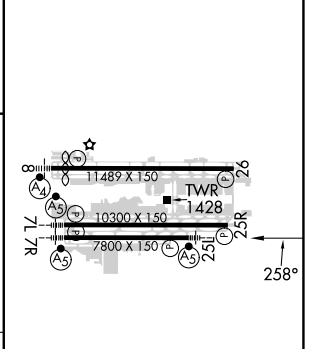
WILLIE 113.3 IWA
Chan 80

ALTERNATE MISSED APCH FIX

WILLIE IWA 113.3
Chan 80



ELEV 1135	D	TDZE 1126
-----------	----------	-----------



CATEGORY	A	B	C	D
S-ILS 25L	1326-1/2 200 (200-1/2)			
S-LOC 25L	1520-1/2 394 (400-1/2)		1520-3/4 394 (400-3/4)	
CIRCLING	1740-1 605 (700-1)	2040-2 3/4 905 (1000-2 3/4)	2560-3 1425 (1500-3)	
HIRL Rwy 8-26, 7L-25R and 7R-25L REIL Rwy 26 FAF to MAP 5.6 NM				
Knots: 60 90 120 150 180 Min:Sec: 5:36 3:44 2:48 2:14 1:52				

SW-4, 22 FEB 2024 to 21 MAR 2024

SW-4, 22 FEB 2024 to 21 MAR 2024

LOC/DME I-CWJ 111.75 Chan 54 (Y)	APP CRS 258°	Rwy Idg 11489 TDZE 1135 Apt Elev 1135
--	------------------------	--

ILS or LOC RWY 26

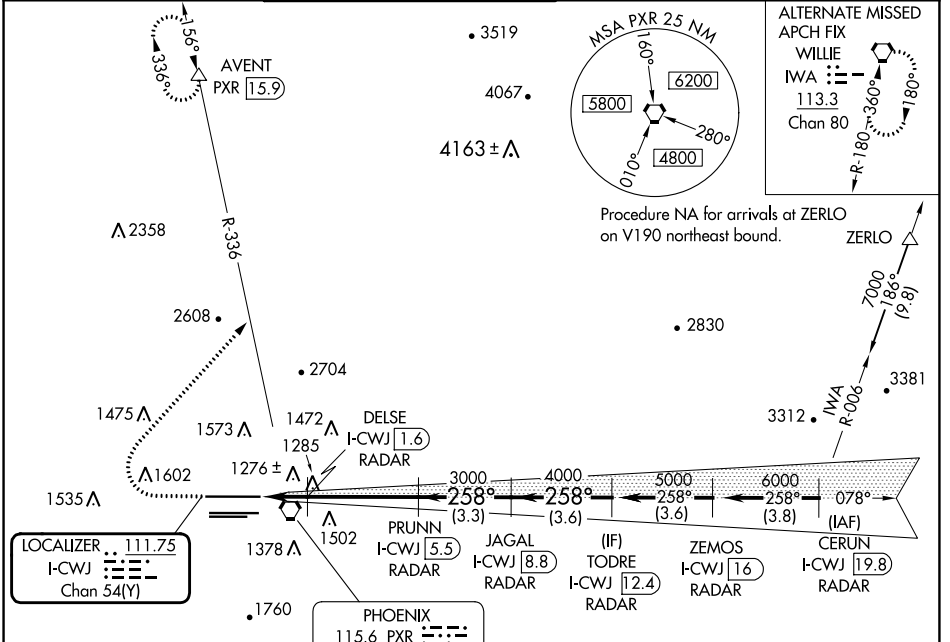
PHOENIX SKY HARBOR INTL (PHX)

DME or RADAR required.

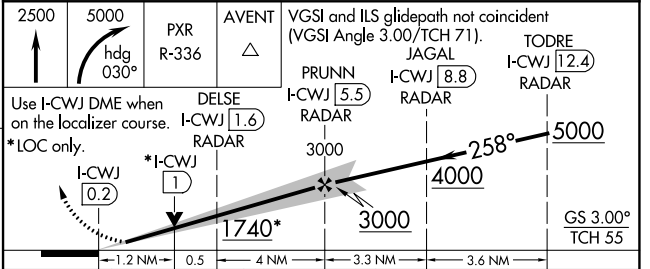
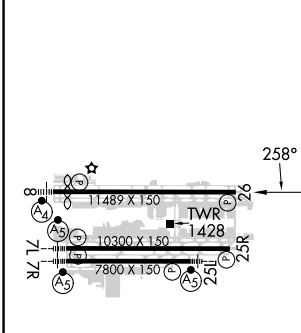
Simultaneous approach authorized.

MISSED APPROACH: Climb to 2500 then climbing right turn to 5000 on heading 030° and PXR VORTAC R-336 to AVENT/PXR 15.9 DME and hold.

D-ATIS 127.575	PHOENIX APP CON 128.65 353.9	PHOENIX TOWER 118.7 278.8 (Rwy 8-26) 120.9 254.3 (Rwy 7L-25R, 7R-25L)	GND CON 119.75 269.2 (N) 132.55 269.2 (S)	CLNC DEL 118.1 269.2	CPDLC
--------------------------	--	---	---	--------------------------------	-------



ELEV 1135	D	TDZE 1135
-----------	----------	-----------



CATEGORY	A	B	C	D
S-ILS 26	1385-3/4 250 (300-3/4)			
S-LOC 26	1580-1	445 (500-1)	1580-1 3/8	445 (500-3/8)
C CIRCLING	1740-1	605 (700-1)	2040-2 3/4	2560-3
			905 (1000-2 3/4)	1425 (1500-3)

SW-4, 22 FEB 2024 to 21 MAR 2024

SW-4, 22 FEB 2024 to 21 MAR 2024

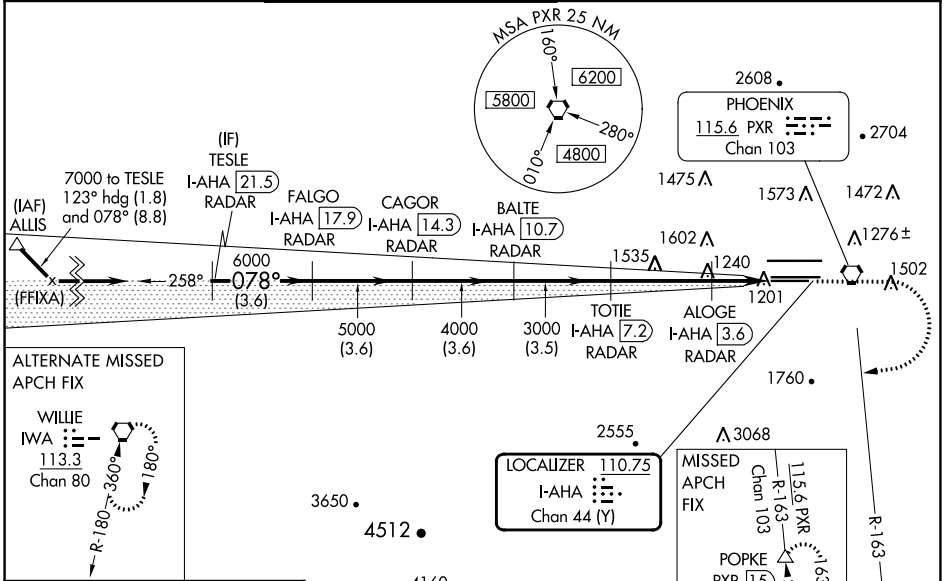
LOC/DME I-AHA	APP CRS	Rwy Idg	7800
110.75	078°	TDZE	1116
Chan 44 (Y)		Apt Elev	1135

ILS or LOC RWY 7R

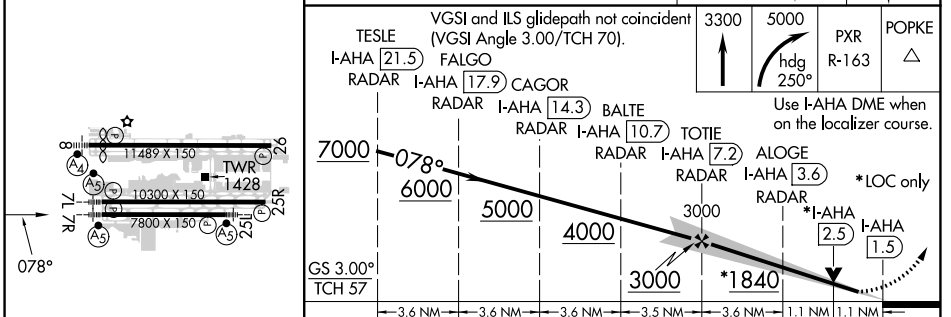
PHOENIX SKY HARBOR INTL (PHX)

DME required.	MALSR	MISSED APPROACH: Climb to 3300 then climbing right turn to 5000 on heading 250° and PXR VORTAC R-163 to POPKE/PXR 15 DME and hold.
⚠ Inop table does not apply to S-ILS 7R. Simultaneous approach authorized with ILS or LOC Rwy 8 and RNAV (GPS) Y Rwy 8. Rwy 7R helicopter visibility reduction below 3/4 SM NA. LOC procedure NA during simultaneous operations. For inop ALS, increase S-LOC 7R visibility Cats A/B to 1 SM and Ops C/D to 1 1/2 SM.		

D-ATIS	PHOENIX APP CON	PHOENIX TOWER	GND CON	CLNC DEL	CPDLC
127.575	128.65 353.9	118.7 278.8 (Rwy 8-26) 120.9 254.3 (Rwy 7L-25R, 7R-25L)	119.75 269.2 (N) 132.55 269.2 (S)	118.1 269.2	



ELEV 1135	D	TDZE 1116
------------------	----------	------------------



HIRL Rwys 8-26, 7L-25R and 7R-25L	REIL Rwy 26	FAF to MAP 5.8 NM				
Knots	60	90	120	150	180	
Min:Sec	5:48	3:52	2:54	2:19	1:56	
C CIRCLING	1740-1	605 (700-1)	2040-2 3/4	905 (1000-2 3/4)	2560-3	1425 (1500-3)

SW-4, 22 FEB 2024 to 21 MAR 2024

SW-4, 22 FEB 2024 to 21 MAR 2024

LOC/DME I-SYQ 111.75 Chan 54 (Y)	APP CRS 078°	Rwy ldg 10591 TDZE 1118 Apt Elev 1135
--	------------------------	--

ILS or LOC RWY 8

PHOENIX SKY HARBOR INTL (PHX)

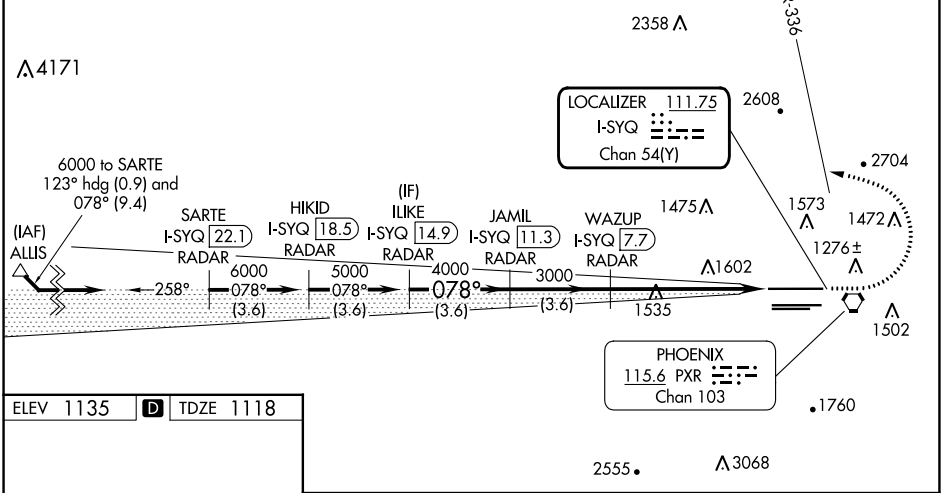
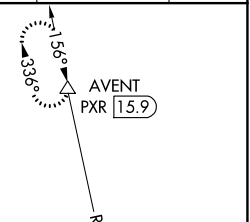
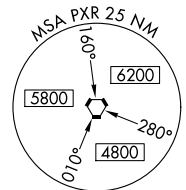
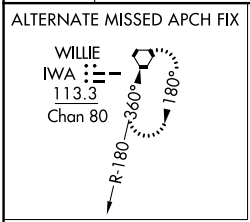
DME or RADAR required.

Autopilot coupled approach NA below 1307 MSL. Inop table does not apply to S-ILS 8. Simultaneous approach authorized. For inop ALS increase S-LOC 8 Cat C/D visibility to 2 SM.

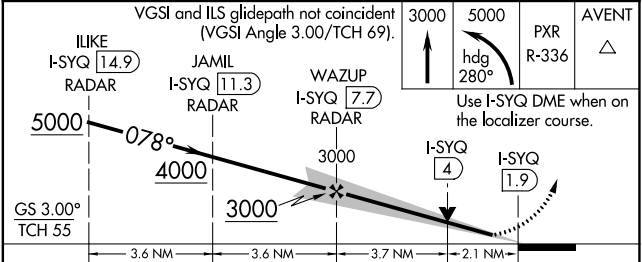
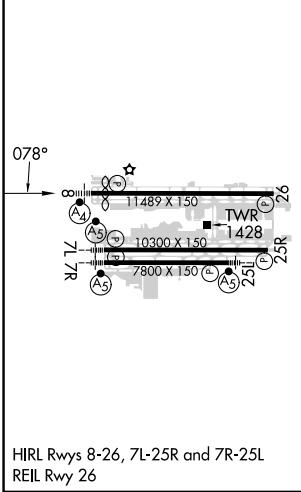
MALSIF

MISSED APPROACH: Climb to 3000 then climbing left turn to 5000 on heading 280° and PXR VORTAC R-336 to AVENT INT/15.9 DME and hold.

D-ATIS 127.575	PHOENIX APP CON 128.65 353.9	PHOENIX TOWER 118.7 278.8 (Rwy 8-26) 120.9 254.3 (Rwy 7L-25R, 7R-25L)	GND CON 119.75 269.2 (N) 132.55 269.2 (S)	CLNC DEL 118.1 269.2	CPDLC
--------------------------	--	---	---	--------------------------------	-------



ELEV 1135	D	TDZE 1118
-----------	----------	-----------



CATEGORY	A	B	C	D
S-ILS 8	1368- ³ / ₄		250 (300- ³ / ₄)	
S-LOC 8	1860- ³ / ₄ 742 (800- ³ / ₄)	1860-1 742 (800-1)	1860-1 ⁷ / ₈ 742 (800-1 ⁷ / ₈)	2560-3
C CIRCLING	1860-1 725 (800-1)	1860-1 ¹ / ₄ 725 (800-1 ¹ / ₄)	2040-2 ³ / ₄ 905 (1000-2 ³ / ₄)	2560-3 1425 (1500-3)


SW-4, 22 FEB 2024 to 21 MAR 2024

SW-4, 22 FEB 2024 to 21 MAR 2024

LOC/DME I-PHX 111.5 Chan 52	APP CRS 078°	Rwy Idg 10300 TDZE 1116 Apt Elev 1135
---	------------------------	--

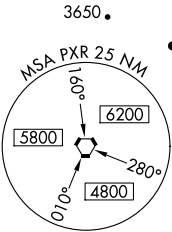
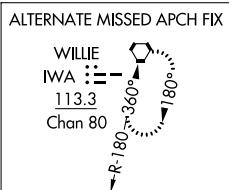
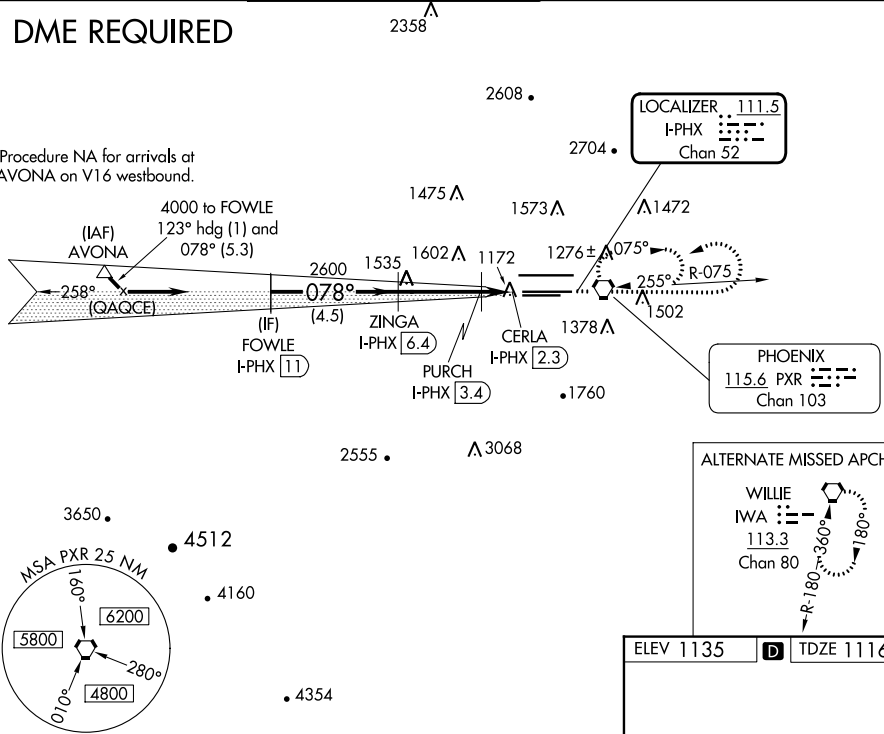
ILS or LOC/DME RWY 7L

PHOENIX SKY HARBOR INTL (PHX)

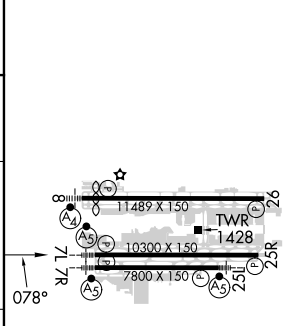
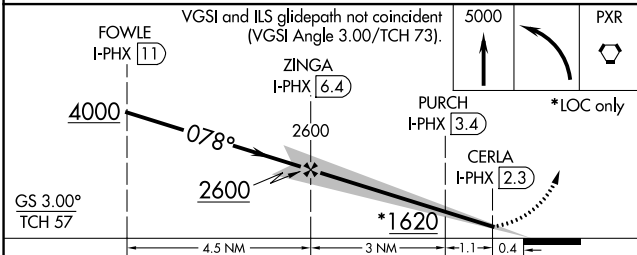
D-ATIS 127.575	PHOENIX APP CON 128.65 353.9	PHOENIX TOWER 118.7 278.8 (Rwy 8-26) 120.9 254.3 (Rwy 7L-25R, 7R-25L)	GND CON 119.75 269.2 (N) 132.55 269.2 (S)	CLNC DEL 118.1 269.2	CPDLC
		<p>For inoperative ALS, increase S-LOC 7L Cats C/D visibility to RVR 5500.</p> <p>MALSR </p> <p>MISSED APPROACH: Climb to 5000 then left turn direct PXR VORTAC and hold.</p>			

DME REQUIRED

Procedure NA for arrivals at AVONA on V16 westbound.



ELEV 1135	D TDZE 1116
-----------	--------------------



CATEGORY	A	B	C	D
S-ILS 7L	1326/24		210 (200-1/2)	
S-LOC 7L	1460/24	344 (400-1/2)	1460/30	344 (400-5/8)
C CIRCLING	1740-1	605 (700-1)	2040-2 3/4 905 (1000-2 3/4)	2560-3 1425 (1500-3)

HIRL Rwy 8-26, 7L-25R and 7R-25L
REIL Rwy 26

SW-4, 22 FEB 2024 to 21 MAR 2024

SW-4, 22 FEB 2024 to 21 MAR 2024

WAAS CH 82211 W25B	APP CRS 258°	Rwy Idg TDZE Apt Elev	7800 1126 1135
--	------------------------	-----------------------------	---

RNAV (GPS) Y RWY 25L

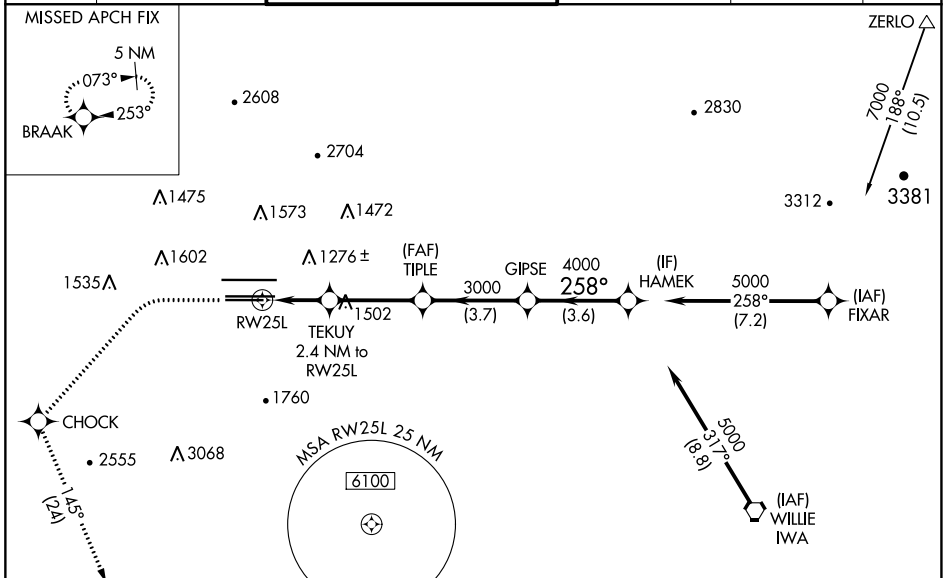
PHOENIX SKY HARBOR INTL (PHX)

RNP APCH-GPS.

Simultaneous approach authorized. LNAV procedure NA during simultaneous operations. Use of FD or AP required during simultaneous operations. For uncompensated Baro-VNAV systems, procedure NA below 2°C or above 54°C. For inop ALS, increase visibility LPV all Cats to 1 SM, LNAV/VNAV all Cats to 1½ SM and LNAV Cats C/D 1¾ SM.

MALSR MISSED APPROACH: Climb to 1900 then climbing left turn to 5000 direct CHOCK and on track 145° to BRAAK and hold.

D-ATIS 127.575	PHOENIX APP CON 128.65 353.9	PHOENIX TOWER 118.7 278.8 (Rwy 8-26) 120.9 254.3 (Rwy 7L-25R, 7R-25L)	GND CON 119.75 269.2 (N) 132.55 269.2 (S)	CLNC DEL 118.1 269.2	CPDLC
--------------------------	--	---	---	--------------------------------	-------



ELEV 1135	D	TDZE 1126
-----------	----------	-----------

1900	5000	CHOCK	tr 145°	BRAAK	VGSI and RNAV glidepath not coincident (VGSI Angle 3.00/TCH 66).
CATEGORY		A	B	C	D
LPV	DA	1449-½ 323 (400-½)			
LNAV/VNAV	DA	1589-1 463 (500-1)			1674-1½ 548 (600-1½)
LNAV	MDA	1740-½ 614 (700-½)		1740-¾ 614 (700-¾)	
C CIRCLING		1740-1 605 (700-1)		2040-¾ 905 (1000-¾)	2340-3 1205 (1300-3)

HIRL Rwy 8-26, 7L-25R and 7R-25L
REIL Rwy 26

SW-4, 22 FEB 2024 to 21 MAR 2024

SW-4, 22 FEB 2024 to 21 MAR 2024

WAAS CH 40022 W25A	APP CRS 258°	Rwy Idg 10300 TDZE 1134 Apt Elev 1135
--	------------------------	--

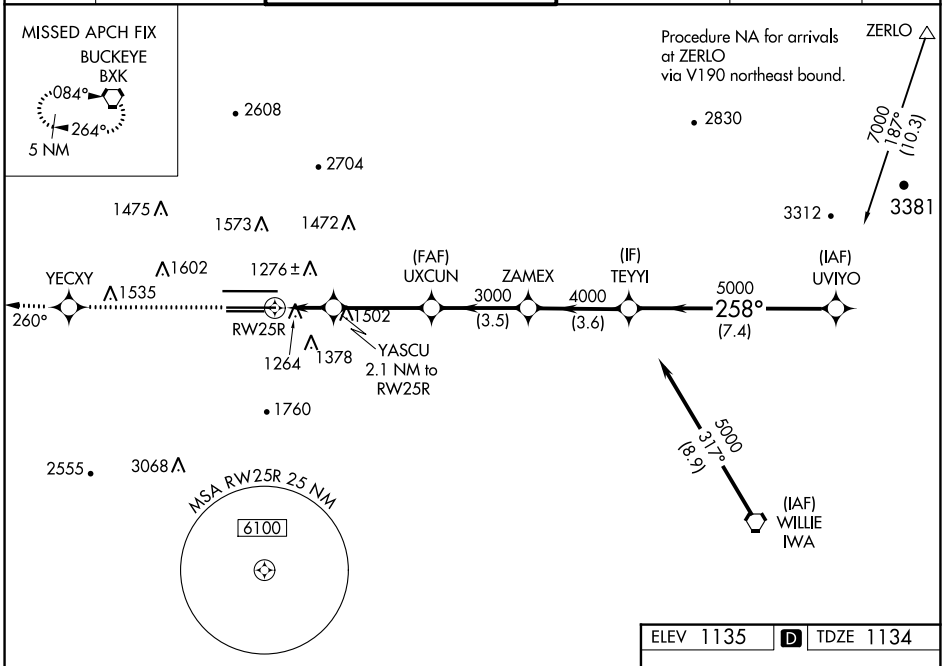
RNAV (GPS) Y RWY 25R

PHOENIX SKY HARBOR INTL (PHX)

⚠ For uncompensated Baro-VNAV systems, LNAV/VNAV NA below -17°C (2°F) or above 46°C (114°F). DME/DME RNP-0.3 NA. Simultaneous approach authorized with ILS or LOC Rwy 26. Use of FD or AP providing RNAV track guidance required during simultaneous operations. LNAV procedure NA during simultaneous operations.

⚠ MISSED APPROACH: Climb to 5000 DIRECT YECCY and via 260° track to BXX VORTAC and hold.

D-ATIS 127.575	PHOENIX APP CON 128.65 353.9	PHOENIX TOWER 118.7 278.8 (Rwy 8-26) 120.9 254.3 (Rwy 7L-25R, 7R-25L)	GND CON 119.75 269.2 (N) 132.55 269.2 (S)	CLNC DEL 118.1 269.2	CPDLC
--------------------------	--	---	---	--------------------------------	-------



SW-4, 22 FEB 2024 to 21 MAR 2024

SW-4, 22 FEB 2024 to 21 MAR 2024

5000	YECCY	fr 260°	BXX	VGSI and RNAV glidepath not coincident (VGSI Angle 3.00/TCH 70).			
*LNAV only.		YASCU 2.1 NM to RW25R	UXCUN	ZAMEX	TEYYI	UVIYO	
1.4 NM to RW25R		1860		3000	4000	5000	7000
1.4 NM	0.7 NM	3.5 NM	3.5 NM	3.6 NM	7.4 NM		
CATEGORY	A	B	C	D			
LPV DA	1439-1		305 (400-1)				
LNAV/VNAV DA	1580-1½		446 (500-1½)				
LNAV MDA	1640-1	506 (600-1)		1640-1½	506 (600-1½)		
CIRCLING	1740-1	605 (700-1)		2040-2¾ 905 (1000-2¾)	2560-3 1425 (1500-3)		

ELEV 1135 **D** TDZE 1134

Procedure Turn NA

GP 3.00° TCH 55

11489 X 150
10300 X 150
7800 X 150

1428
25R

258° to RW25R

WAAS CH 70321 W26A	APP CRS 258°	Rwy Idg 11489 TDZE 1135 Apt Elev 1135
--	------------------------	--

RNAV (GPS) Y RWY 26

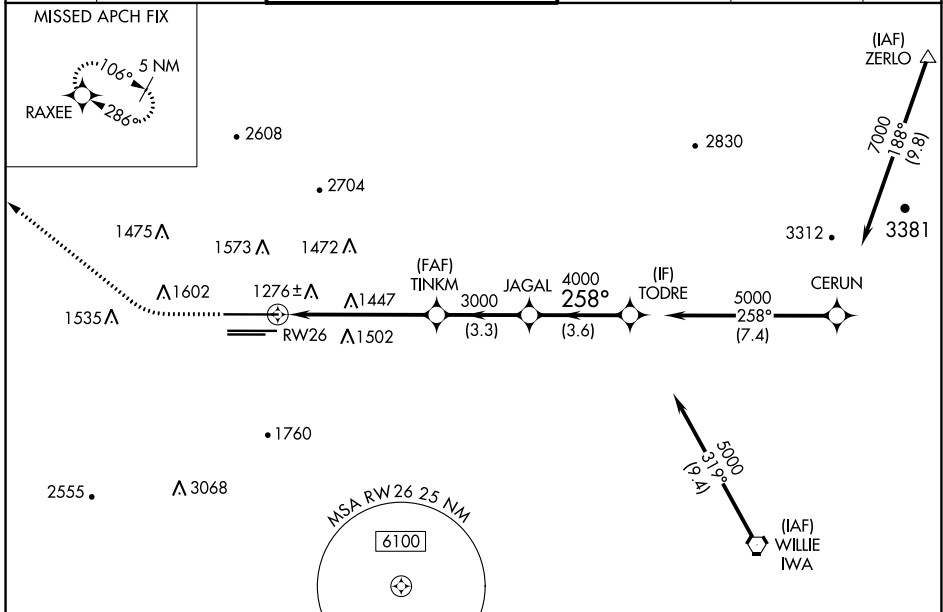
PHOENIX SKY HARBOR INTL (PHX)

RNP APCH-GPS.

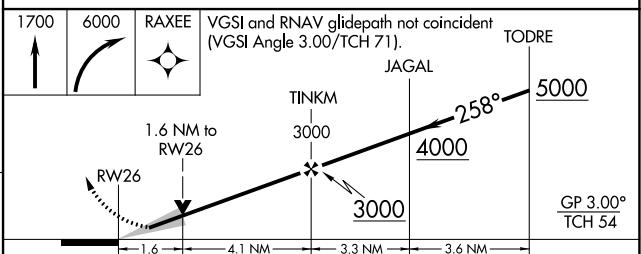
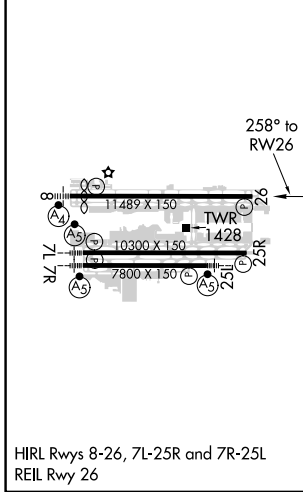
Simultaneous approach authorized. LNAV procedure NA during simultaneous operations. Use of FD or AP required during simultaneous operations. For uncompensated Baro-VNAV systems, procedure NA below 2°C or above 54°C.

MISSED APPROACH: Climb to 1700 then climbing right turn to 6000 direct RAXEE and hold.

D-ATIS 127.575	PHOENIX APP CON 128.65 353.9	PHOENIX TOWER 118.7 278.8 (Rwy 8-26) 120.9 254.3 (Rwy 7L-25R, 7R-25L)	GND CON 119.75 269.2 (N) 132.55 269.2 (S)	CLNC DEL 118.1 269.2	CPDLC
--------------------------	--	---	---	--------------------------------	-------



ELEV 1135	D	TDZE 1135
-----------	----------	-----------



CATEGORY	A	B	C	D
LPV DA		1390-3/4	255 (300-3/4)	
LNAV/VNAV DA		1581-1 3/8	446 (500-1 3/8)	
LNAV MDA	1700-1	565 (600-1)	1700-1 1/8	565 (600-1 1/8)
CIRCLING	1740-1	605 (700-1)	2040-2 3/4	2340-3
			905 (1000-2 3/4)	1205 (1300-3)

SW-4, 22 FEB 2024 to 21 MAR 2024

SW-4, 22 FEB 2024 to 21 MAR 2024

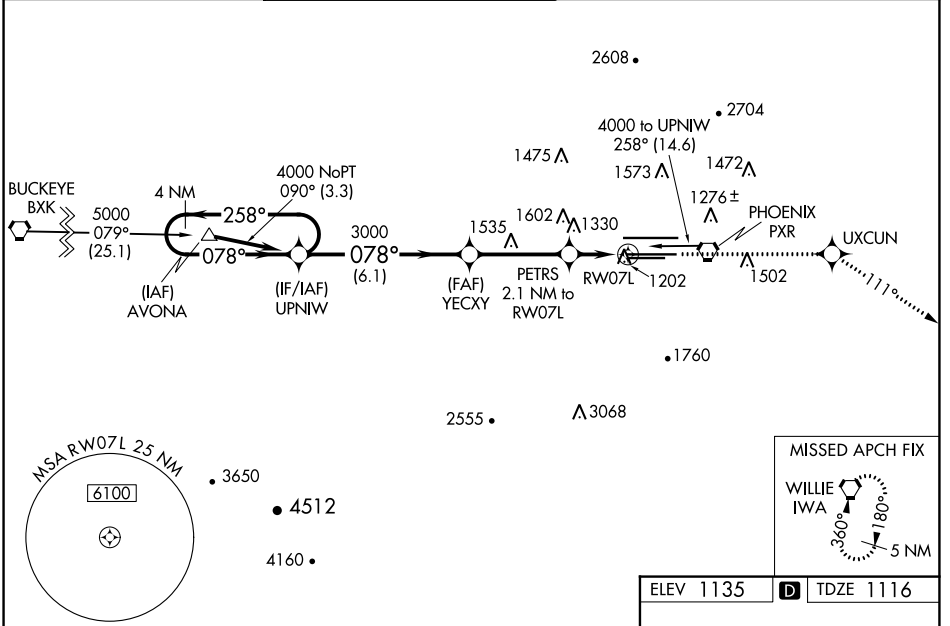
WAAS CH 65811 W07A	APP CRS 078°	Rwy Idg 10300 TDZE 1116 Apt Elev 1135
--	------------------------	--

RNAV (GPS) Y RWY 7L

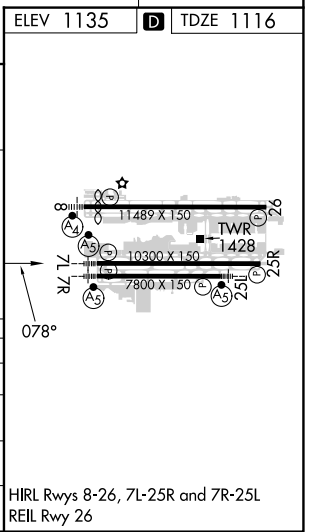
PHOENIX SKY HARBOR INTL (PHX)

RNP APCH - GPS.	MALSR	MISSED APPROACH: Climb to 5000 direct UXCUN and via 111° track to IWA VORTAC and hold.
<p>▼ For inop ALS, increase visibility LPV all Cats to RVR 4500, LNAV/VNAV all Cats to RVR 6000, LNAV Cats C/D to 1½ SM. For uncompensated Baro-VNAV systems, LNAV/VNAV NA below -17°C or above 46°C. Simultaneous approach authorized. Use of FD or AP providing RNAV track guidance required during simultaneous operations. LNAV procedure NA during simultaneous operations.</p>		

D-ATIS 127.575	PHOENIX APP CON 128.65 353.9	PHOENIX TOWER 118.7 278.8 (Rwy 8-26) 120.9 254.3 (Rwy 7L-25R, 7R-25L)	GND CON 119.75 269.2 (N) 132.55 269.2 (S)	CLNC DEL 118.1 269.2	CPDLC
--------------------------	--	---	---	--------------------------------	-------



VGSI and RNAV glidepath not coincident (VGSI Angle 3.00/TCH 73).		5000	UXCUN	tr 111°	IWA
4 NM Holding Pattern		UPNIW	YECXY	PETRS 2.1 NM to RW07L	1.3 NM to RW07L
4000 ← 258°		3000	1840	RW07L	
GP 3.00° TCH 57		6.1 NM	3.6 NM	0.8	1.3 NM
CATEGORY	A	B	C	D	
LPV DA	1389/24		273 (300-½)		
LNAV/VNAV DA	1519/50		403 (400-1)		
LNAV MDA	1580/24	464 (500-½)	1580/40	1580/50	
			464 (500-¾)	464 (500-1)	
CIRCLING	1740-1	605 (700-1)	2040-2¾	2560-3	
			905 (1000-2¾)	1425 (1500-3)	



SW-4, 22 FEB 2024 to 21 MAR 2024

SW-4, 22 FEB 2024 to 21 MAR 2024


WAAS CH 73011 W07B	APP CRS 078°	Rwy Idg TDZE 1116 Apt Elev 1135
--	------------------------	---

RNAV (GPS) Y RWY 7R

PHOENIX SKY HARBOR INTL (PHX)

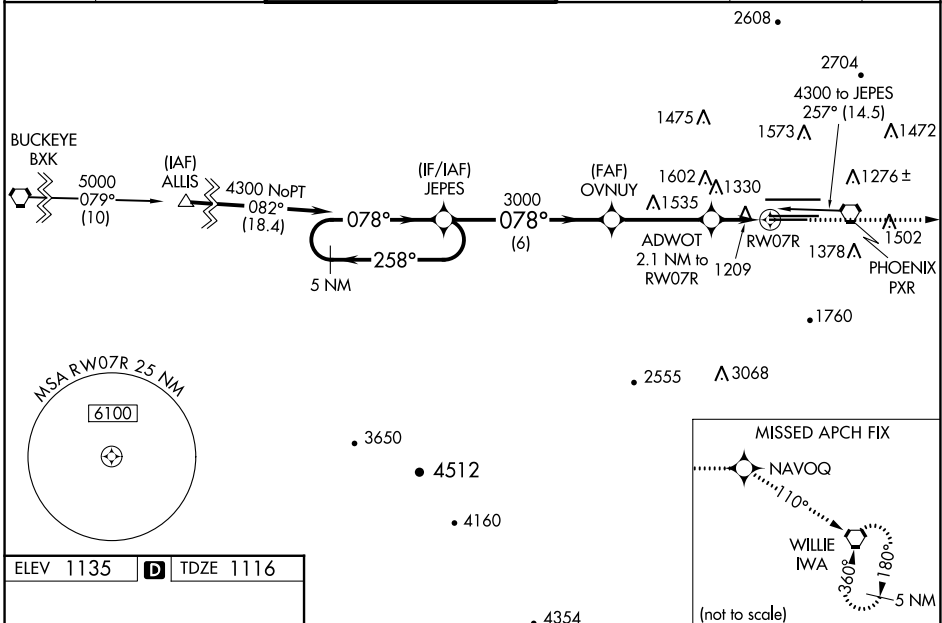
RNP APCH - GPS.

⚠ For inop ALS, increase visibility LPV all Cats to ½ SM, LNAV/VNAV all Cats to 1½ SM, LNAV Cats A/B to 1 SM and C/D to 1¾ SM. For uncompensated Baro-VNAV systems, LNAV/VNAV NA below -17°C or above 46°C. Rwy 7R helicopter visibility reduction below ¾ SM NA. Simultaneous approach authorized. Use of FD or AP providing RNAV track guidance required during simultaneous operations. LNAV procedure NA during simultaneous operations.

MALSR 

MISSED APPROACH: Climb to 5000 direct NAVOQ and via 110° track to IWA VORTAC and hold.

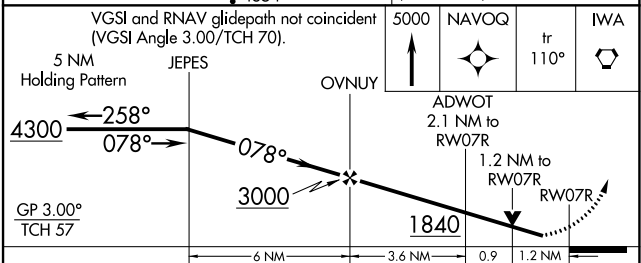
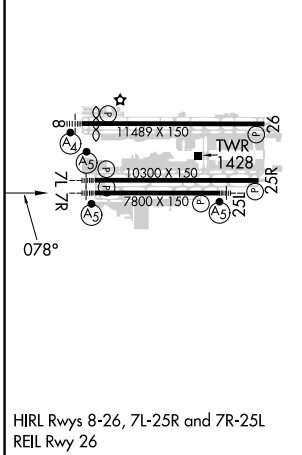
D-ATIS 127.575	PHOENIX APP CON 128.65 353.9	PHOENIX TOWER 118.7 278.8 (Rwy 8-26) 120.9 254.3 (Rwy 7L-25R, 7R-25L)	GND CON 119.75 269.2 (N) 132.55 269.2 (S)	CLNC DEL 118.1 269.2	CPDLC
--------------------------	--	---	---	--------------------------------	-------



SW-4, 22 FEB 2024 to 21 MAR 2024

SW-4, 22 FEB 2024 to 21 MAR 2024

ELEV 1135	D	TDZE 1116
-----------	----------	-----------



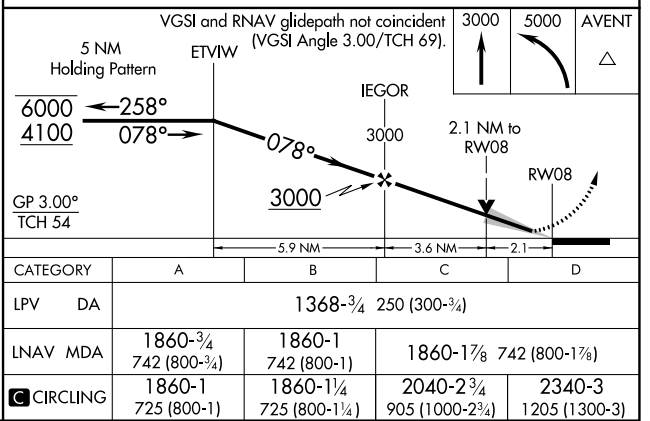
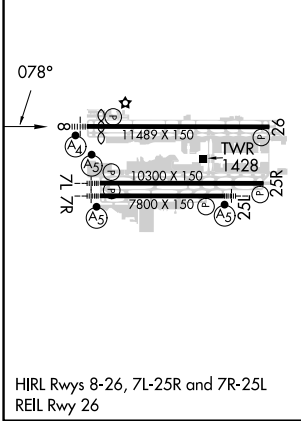
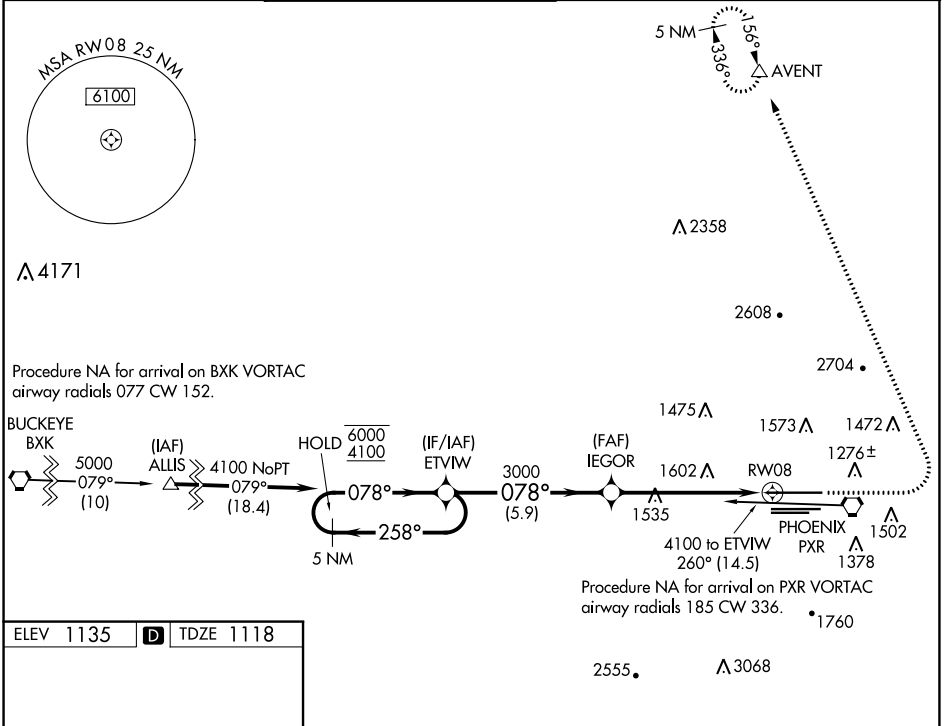
CATEGORY	A	B	C	D
LPV DA		1390-¾	274 (300-¾)	
LNAV/VNAV DA		1520-1	404 (400-1)	
LNAV MDA	1580-¾	464 (500-¾)	1580-1	464 (500-1)
C CIRCLING	1740-1	605 (700-1)	2040-2¾ 905 (1000-2¾)	2560-3 1425 (1500-3)

WAAS CH 86611 W08A	APP CRS 078°	Rwy Idg 10591 TDZE 1118 Apt Elev 1135
--	------------------------	--

RNAV (GPS) Y RWY 8

PHOENIX SKY HARBOR INTL (PHX)

RNP APCH - GPS.		MALSF	MISSED APPROACH: Climb to 3000 then climbing left turn to 5000 direct AVENT and hold.		
<p>⚠ Simultaneous approach authorized. LNAV procedure NA during simultaneous operations. Inop table does not apply to LPV all Cats. For inop ALS, increase LNAV Cats C and D visibility to 2 SM.</p>					
D-ATIS 127.575	PHOENIX APP CON 128.65 353.9	PHOENIX TOWER 118.7 278.8 (Rwy 8-26) 120.9 254.3 (Rwy 7L-25R, 7R-25L)	GND CON 119.75 269.2 (N) 132.55 269.2 (S)	CLNC DEL 118.1 269.2	CPDLC



SW-4, 22 FEB 2024 to 21 MAR 2024

SW-4, 22 FEB 2024 to 21 MAR 2024