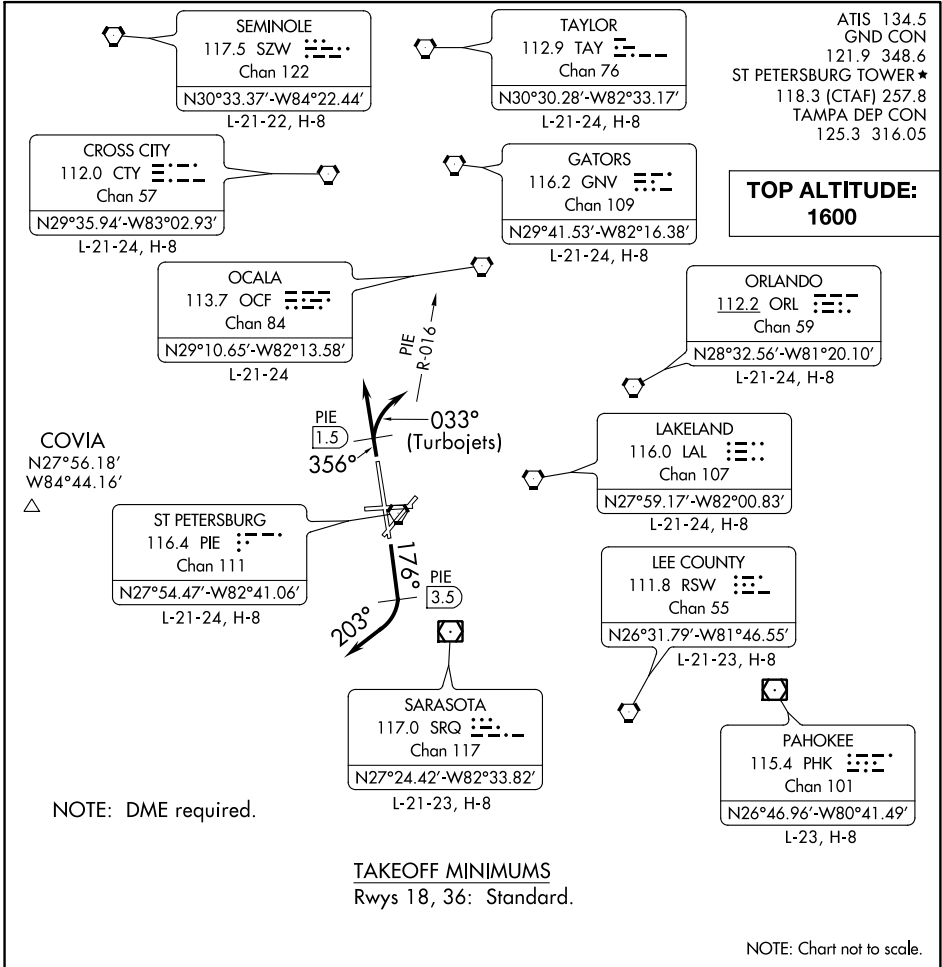


# ST PETE NINE DEPARTURE



SE-3: 19 JUL 2018 to 16 AUG 2018

SE-3: 19 JUL 2018 to 16 AUG 2018

**DEPARTURE ROUTE DESCRIPTION**

**TAKEOFF RWY 18:** Climb heading 176° until PIE VORTAC 3.5 DME, then turn right heading 203° or as assigned for RADAR vectors to filed/assigned route, thence. . . .

**TAKEOFF RWY 36: TURBOJETS** climb heading 356° until PIE VORTAC 1.5 DME, then turn right heading 033° to intercept and fly outbound on PIE R-016, thence. . . .

**ALL OTHERS** fly heading 356° or as assigned for RADAR vectors to filed/assigned route. Thence. . . .

. . . .maintain 1600, expect further clearance to filed altitude 10 minutes after departure.