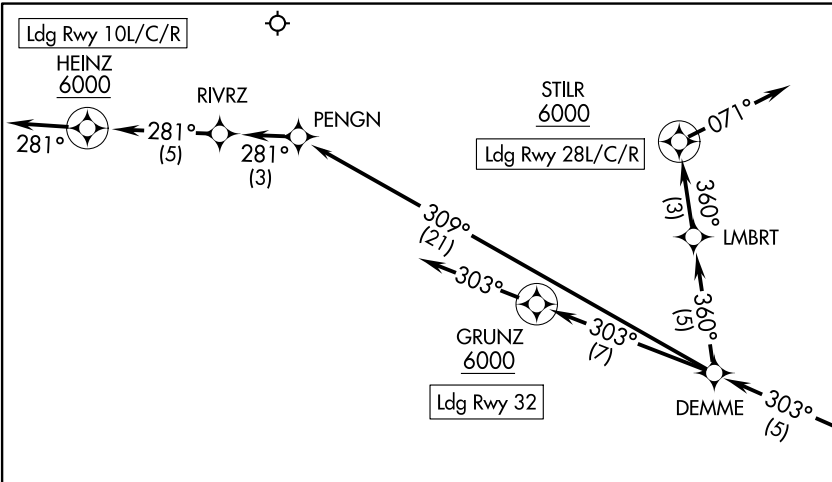


PITTSBURGH APP CON
123.95 336.2
D-ATIS
127.25

RNAV 1 - DME/DME/IRU or GPS.
RADAR required.



ARRIVAL ROUTE DESCRIPTION

LEJOY TRANSITION (LEJOY.DEMME5):
VINSE TRANSITION (VINSE.DEMME5):

From NESTO on track 303° to DEMME.

LANDING RUNWAY 10L/C/R: From DEMME on track 309° to PENGN, then on track 281° to RIVRZ, then on track 281° to cross HEINZ at or above 6000, then on heading 281°. Expect RADAR vectors to final approach course.

LANDING RUNWAY 28L/C/R: From DEMME on track 360° to LMBRT, then on track 360° to cross STILR at or above 6000, then on heading 071°. Expect RADAR vectors to final approach course.

LANDING RUNWAY 32: From DEMME on track 303° to cross GRUNZ at or above 6000, then on heading 303°. Expect RADAR vectors to final approach course.



NOTE: Chart not to scale

DEMME FIVE ARRIVAL (RNAV)
(NESTO.DEMME5) 15JUN23

PITTSBURGH, PENNSYLVANIA
PITTSBURGH INTL (PTT)

(NESTO.DEMME5) 23166
DEMME FIVE ARRIVAL (RNAV)

AL-570 (FAA)

PITTSBURGH INTL (PTT)
PITTSBURGH, PENNSYLVANIA

FEWGA SEVEN ARRIVAL (RNAV)
(WISKE:FEWGA7) 17JUN21

PITTSBURGH APP CON
123.95 336.2
D-ATIS
127.25

CLARKSBURG TRANSITION (CKB.FEWGA7):
HENDERSON TRANSITION (HNN.FEWGA7):
NEWCOMERSTOWN TRANSITION (CTW.FEWGA7):
PARKERSBURG TRANSITION (JPU.FEWGA7):

NEWCOMERSTOWN
CTW
13000
122°
(33)

10 NM
226°
10000
046°
(36)
PYRAT

10 NM
225°
15000
040°
(7)
PARKERSBURG
JPU

HENDERSON
HNN
17000
045°
(51)

3100
002°
(13)
LEMEW

3100
055°
(5)
WISKE
Expect 10000

3100
055°
(9)
FEWGA

3100
072°
(10)
GOLDH

3100
072°
(4)
JOEPA

3100
072°
(4)
GUINZ

3100
099°
(2)
FLURY

3100
145°
(6)
MLKIN

3100
146°
CRSBY

NOTE: RADAR required.
NOTE: RNAV 1.
NOTE: DME/DME/IRU or GPS required.
NOTE: CKB Transition: Aircraft do not file, for ATC use only, flow control purposes.

ARRIVAL ROUTE DESCRIPTION

From WISKE on track 055° to FEWGA, thence on assigned runway transition.

LANDING RWY 10L/10C/10R: From FEWGA on track 002° to LEMEW, then on heading 301°. Expect radar vectors to final approach course.

LANDING RWY 28L/28C/28R: From FEWGA on track 055° to BBLAK, then on track 072° to GOLDH, then on track 072° to JOEPA, then on track 072° to GUINZ, then on track 101° to CYDNY, then on heading 101°. Expect radar vectors to final approach course.

LANDING RWY 32: From FEWGA on track 055° to BBLAK, then on track 072° to GOLDH, then on track 100° to FLURY, then on track 099° to MLKIN, then on track 145° to CRSBY, then fly heading 146°. Expect radar vectors to final approach course.

NOTE: Chart not to scale

FEWGA SEVEN ARRIVAL (RNAV)
(WISKE:FEWGA7) 21224

PITTSBURGH INTL (PIT)
PITTSBURGH, PENNSYLVANIA
AL-570 (FAA)

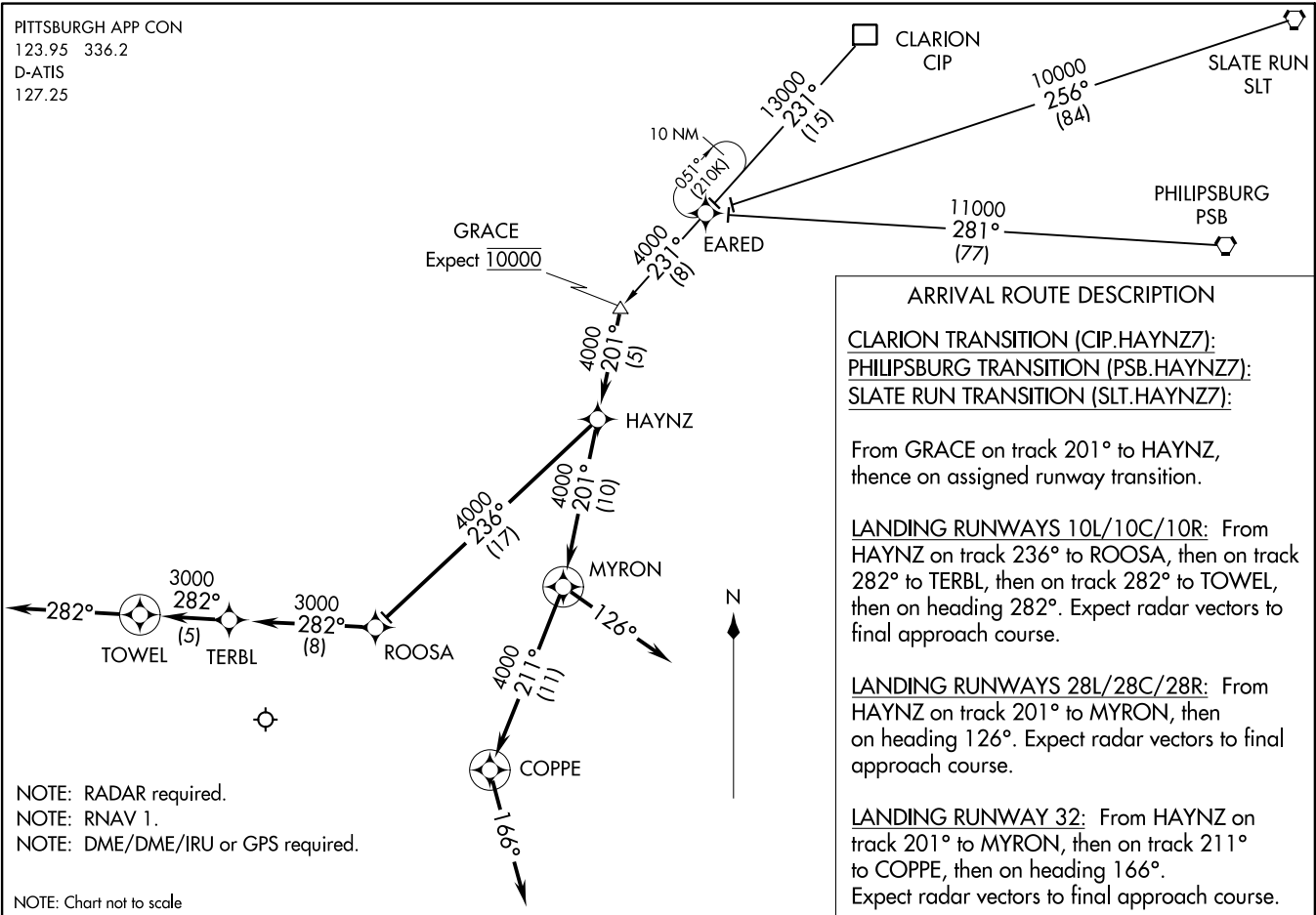
HAYNZ SEVEN ARRIVAL (RNAV)
 (GRACE.HAYNZ7) 25FEB21

(GRACE.HAYNZ7) 23334
 HAYNZ SEVEN ARRIVAL (RNAV)

AL-570 (FAA)

PITTSBURGH INTL (PIT)
 PITTSBURGH, PENNSYLVANIA

PITTSBURGH APP CON
 123.95 336.2
 D-ATIS
 127.25



ARRIVAL ROUTE DESCRIPTION

CLARION TRANSITION (CIP.HAYNZ7):
PHILIPSBURG TRANSITION (PSB.HAYNZ7):
SLATE RUN TRANSITION (SLT.HAYNZ7):

From GRACE on track 201° to HAYNZ, thence on assigned runway transition.

LANDING RUNWAYS 10L/10C/10R: From HAYNZ on track 236° to ROOSA, then on track 282° to TERBL, then on track 282° to TOWEL, then on heading 282°. Expect radar vectors to final approach course.

LANDING RUNWAYS 28L/28C/28R: From HAYNZ on track 201° to MYRON, then on heading 126°. Expect radar vectors to final approach course.

LANDING RUNWAY 32: From HAYNZ on track 201° to MYRON, then on track 211° to COPPE, then on heading 166°. Expect radar vectors to final approach course.

NOTE: RADAR required.
 NOTE: RNAV 1.
 NOTE: DME/DME/IRU or GPS required.
 NOTE: Chart not to scale

PITTSBURGH, PENNSYLVANIA
 PITTSBURGH INTL (PIT)

PITTSBURGH APP CON
123.95 336.2
D-ATIS
127.25

(CUTTA.JESEY4) 19339
JESSEY FOUR ARRIVAL (RNAV)

AL-570 (FAA)

PITTSBURGH INTL (PIT)
PITTSBURGH, PENNSYLVANIA

JESSEY FOUR ARRIVAL (RNAV)
(CUTTA.JESEY4) 05DEC19

AKRON ACO

YOUNGSTOWN YNG

CUTTA
Expect 10000

BRIGGS BSV

JESEY

YINZZ

KRIKK

SSOXX

ROOSA

PROGY

PRUIT



NOTE: BRIGGS Transition
ATC assigned only.

NOTE: RADAR required.
NOTE: RNAV 1.
NOTE: DME/DME/IRU or GPS required.

ARRIVAL ROUTE DESCRIPTION

- AKRON TRANSITION (ACO.JESEY4)
- BRIGGS TRANSITION (BSV.JESEY4)
- YOUNGSTOWN TRANSITION (YNG.JESEY4)

From CUTTA on track 147° to JESSEY, thence on assigned runway transition.

LANDING RWY 10L/10C/10R: From JESSEY on track 221° to YINZZ, then on heading 251°. Expect radar vectors to final approach course.

LANDING RWY 28L/28C/28R: From JESSEY on track 148° to KRIKK, then on track 102° to SSOXX, then on track 102° to ROOSA, then on heading 102°. Expect radar vectors to final approach course.

LANDING RWY 32: From JESSEY on track 148° to KRIKK, then on track 127° to PROGY, then on track 128° to PRUIT, then on heading 146°. Expect radar vectors to final approach course.

PITTSBURGH, PENNSYLVANIA
PITTSBURGH INTL (PIT)

NOTE: Chart not to scale