

# RNAV (GPS) RWY 15

PRINCETON MUNI (PNN)

APP CRS	Rwy Idg	<b>4007</b>
<b>149°</b>	TDZE	<b>265</b>
	Apt Elev	<b>265</b>

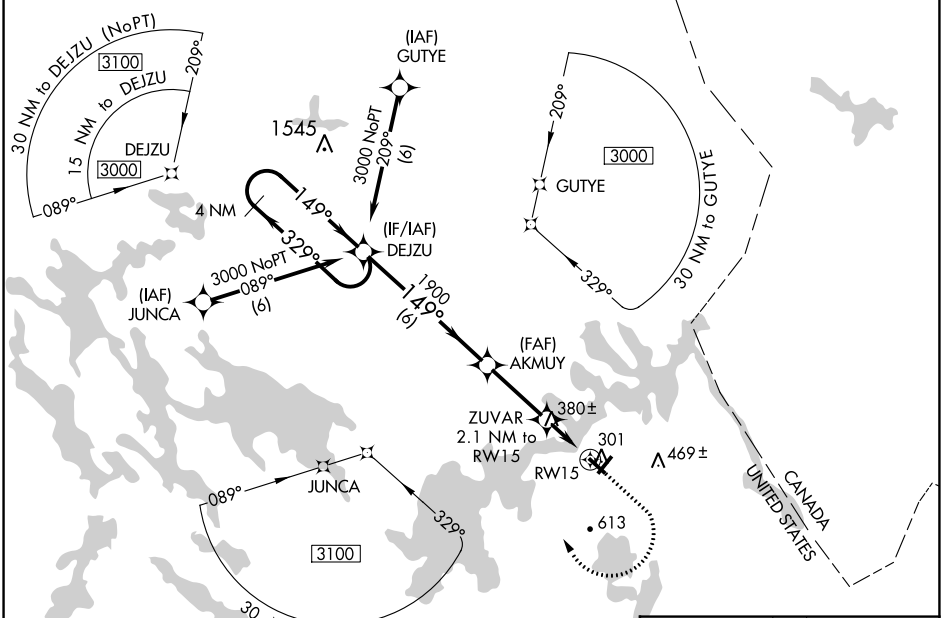
RNP APCH.

**▽** Rwy 15 helicopter visibility reduction below  $\frac{3}{4}$  SM NA. VDP NA when using Bangor altimeter setting. When local altimeter setting not received, use Bangor altimeter setting and increase all MDA 160 feet; increase LNAV Cat C and D and Circling Cat C and D visibility  $\frac{1}{2}$  SM.

**△** NA

**MISSED APPROACH:**  
Climb to 1000 then climbing right turn to 3000 direct DEJZU and hold.

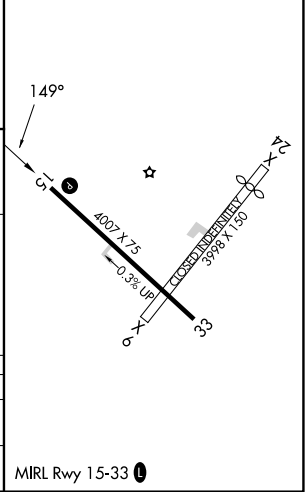
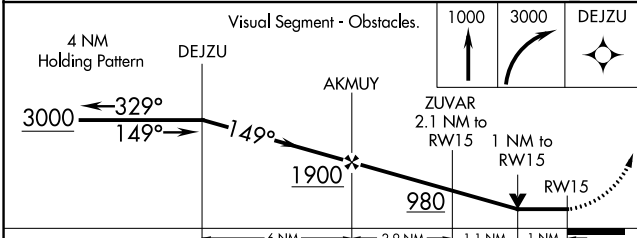
AWOS-AV <b>122.7</b>	BOSTON CENTER <b>124.25 290.5</b>	UNICOM <b>122.7 (CTAF) 0</b>
-------------------------	--------------------------------------	---------------------------------



NE-1, 22 FEB 2024 to 21 MAR 2024

NE-1, 22 FEB 2024 to 21 MAR 2024

ELEV 265	TDZE 265
----------	----------



CATEGORY	A	B	C	D
LNAV MDA	640-1		375 (400-1)	
<b>C</b> CIRCLING	700-1 435 (500-1)	880-1 615 (700-1)	980-2 715 (800-2)	980-2 $\frac{1}{4}$ 715 (800-2 $\frac{1}{4}$ )

MIRL Rwy 15-33 0

WAAS CH <b>70346</b> <b>W33A</b>	APP CRS <b>330°</b>	Rwy Idg TDZE Apt Elev	<b>4007</b> <b>265</b> <b>265</b>
--	------------------------	-----------------------------	---

# RNAV (GPS) RWY 33

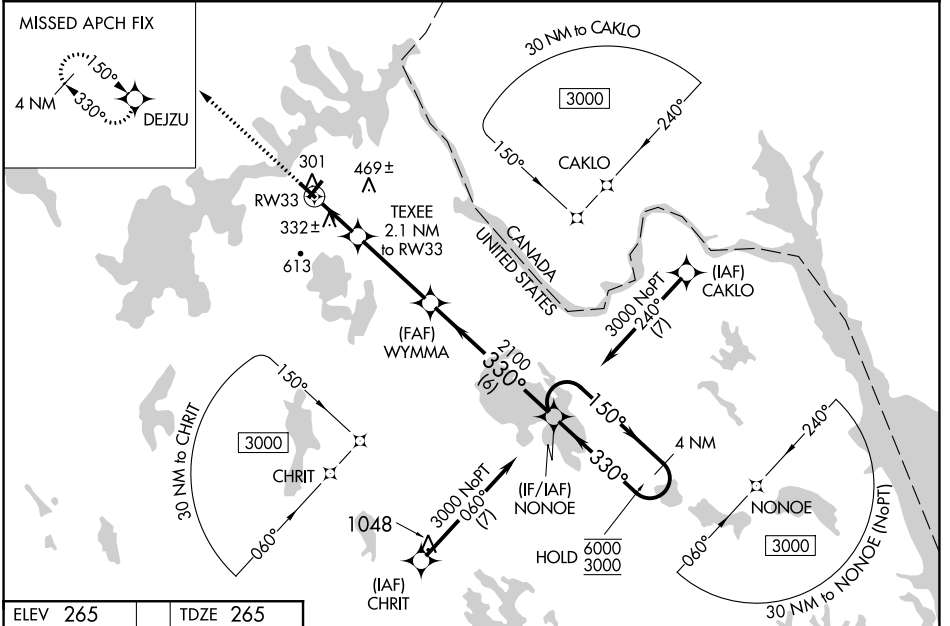
PRINCETON MUNI (PNN)

RNP APCH - GPS.

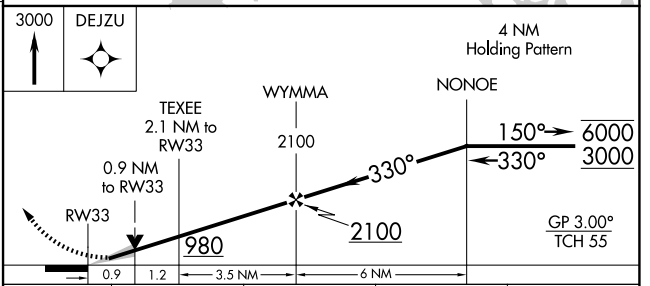
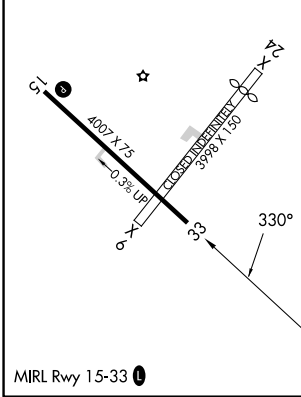
**⚠** Baro-VNAV and VDP NA when using Bangor altimeter setting. For uncompensated Baro-VNAV systems, LNAV/VNAV NA below -15°C or above 54°C. When local altimeter setting not received, use Bangor altimeter setting; increase LPV DA to 661 feet and all visibilities 1/8 SM; increase LNAV/VNAV DA to 683 feet and all visibilities 1/8 SM; increase all MDAs 160 feet and visibility LNAV Cat C/D 3/8 SM and Circling Cat C/D 1/2 SM.

**⚠** MISSED APPROACH: Climb to 3000 direct DEJZU and hold, continue climb-in-hold to 3000.

AWOS-AV <b>122.7</b>	BOSTON CENTER <b>124.25 290.5</b>	UNICOM <b>122.7 (CTAF)</b>
-------------------------	--------------------------------------	-------------------------------



ELEV 265	TDZE 265
----------	----------



CATEGORY	A	B	C	D
LPV DA		515-1	250 (300-1)	
LNAV/VNAV DA		537-1	272 (300-1)	
LNAV MDA		600-1	335 (400-1)	
CIRCLING	720-1 455 (500-1)	820-1 555 (600-1)	980-2 715 (800-2)	980-2 1/4 715 (800-2 1/4)

NE-1, 22 FEB 2024 to 21 MAR 2024

NE-1, 22 FEB 2024 to 21 MAR 2024