

LOC I-PWK <b>109.75</b>	APP CRS <b>161°</b>	Rwy Idg <b>5001</b>
		TDZE <b>643</b>
		Apt Elev <b>647</b>

# ILS or LOC RWY 16

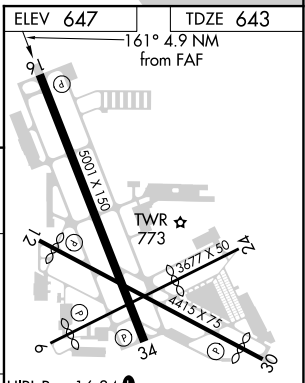
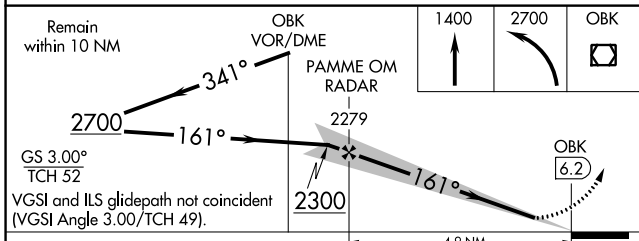
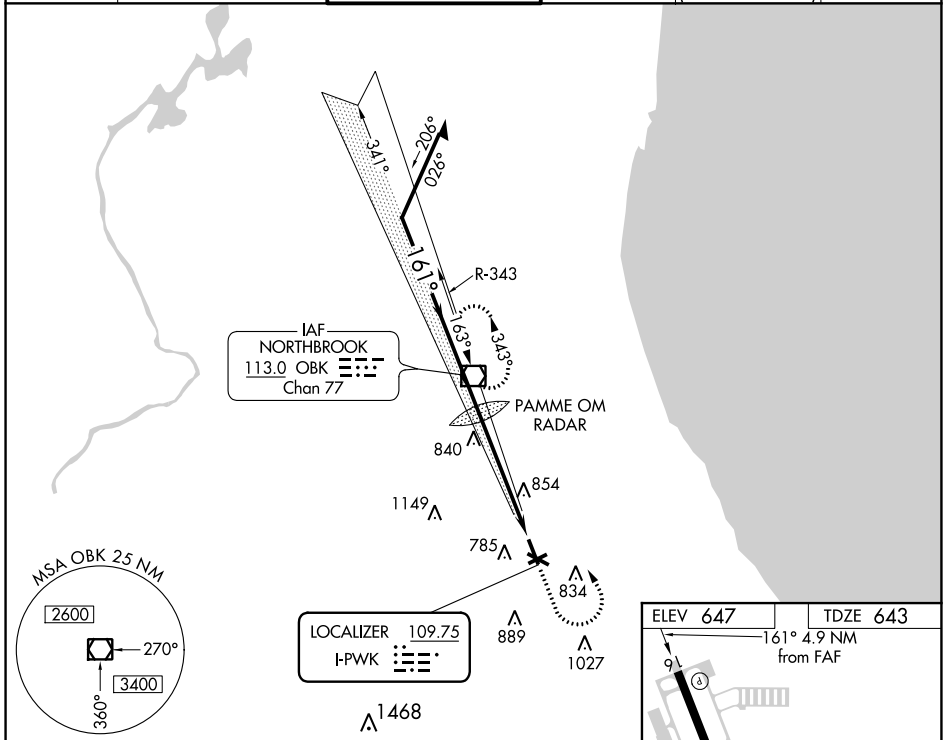
CHICAGO EXEC (PWK)

**RADAR** required for procedure entry.

⚠ When local altimeter setting not received, use Chicago-O'Hare Intl altimeter setting: increase DA to 949 feet and all visibilities ¼ SM; increase all MDAs 40 feet and visibility S-LOC 16 Cats C and D ¼ SM. Rwy 16 helicopter visibility reduction below ¼ SM NA. Circling Rwy 6, 12, 24, 30 NA at night. Autopilot coupled approach NA below 1125.

**MISSED APPROACH:** Climb to 1400 then climbing left turn to 2700 direct OBK VOR/DME and hold.

ATIS <b>124.2</b>	CHICAGO APP CON <b>120.55 306.925</b>	EXECUTIVE TOWER ★ <b>119.9 (CTAF) 0</b>	GND CON <b>121.7</b>	CLNC DEL <b>124.7</b> (when tower closed)	UNICOM <b>122.95</b>
----------------------	--	--	-------------------------	---	-------------------------



CATEGORY	A	B	C	D
S-ILS 16	927-1 284 (300-1)			
S-LOC 16	1140-1	497 (500-1)	1140-1½ 497 (500-1½)	1140-1½ 497 (500-1½)
CIRCLING	1140-1 493 (500-1)	1160-1 513 (600-1)	1200-1½ 553 (600-1½)	1460-2¾ 813 (900-2¾)

HIRL Rwy 16-34  
MIRL Rwys 6-24 and 12-30  
REIL Rwys 12 and 30  
REIL Rwys 16 and 34  
RLLS Rwy 16

FAF to MAP 4.9 NM

Knots	60	90	120	150	180
Min:Sec	4:54	3:16	2:27	1:58	1:38

EC-3, 22 APR 2021 to 20 MAY 2021

EC-3, 22 APR 2021 to 20 MAY 2021

WAAS CH <b>45627</b> <b>W16A</b>	APP CRS <b>161°</b>	Rwy Idg TDZE Apt Elev	<b>5001</b> <b>643</b> <b>647</b>
--	------------------------	-----------------------------	---

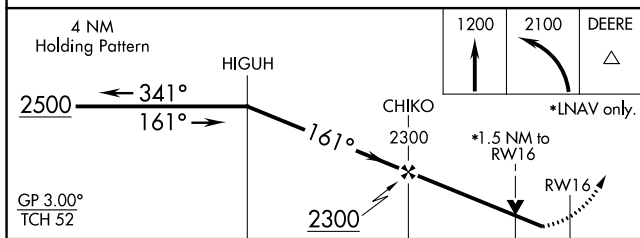
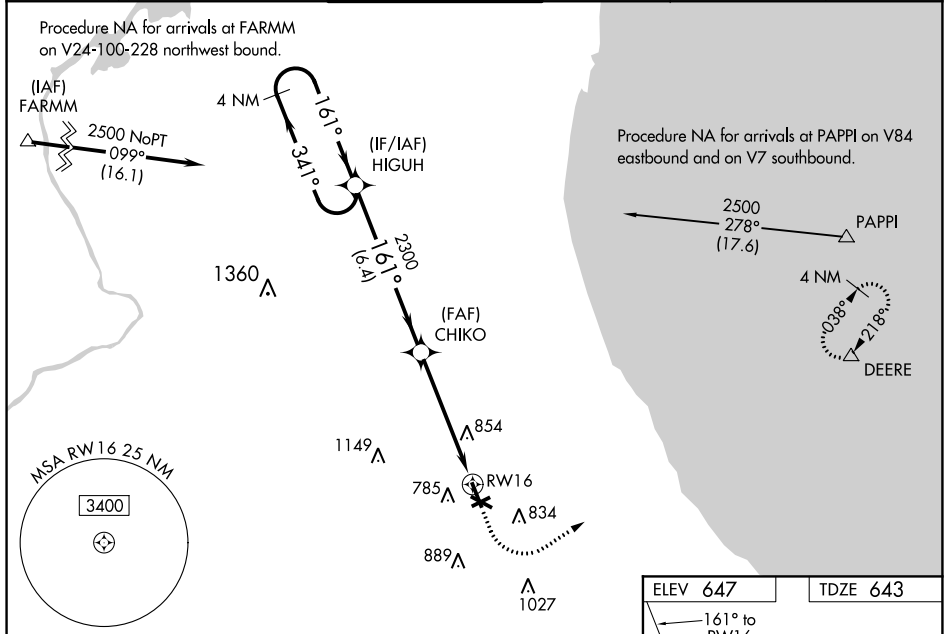
# RNAV (GPS) RWY 16

CHICAGO EXEC (PWK)

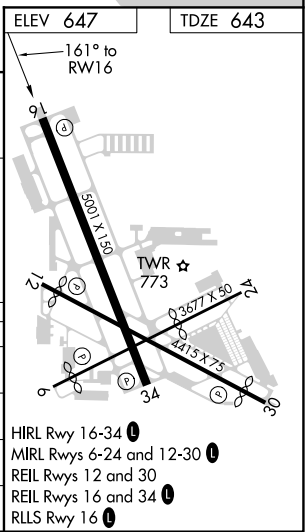
**⚠** Circling to Rwy 6, 12, 24, 30 NA at night. For uncompensated Baro-VNAV systems, LNAV/VNAV NA below -16°C (4°F) or above 39°C (102°F). Rwy 16 helicopter visibility reduction below ¾ SM NA. DME/DME RNP-0.3 NA. When local altimeter setting not received use Chicago O'Hare Intl altimeter setting and increase LPV DA to 927 feet; increase LNAV/VNAV DA to 1110 feet; increase all MDAs 40 feet and LNAV visibility Cats C and D ¼ SM. VDP and Baro-VNAV NA with Chicago O'Hare Intl altimeter setting.

**MISSED APPROACH:**  
Climb to 1200 then climbing left turn to 2100 direct DEERE and hold.

ATIS <b>124.2</b>	CHICAGO APP CON <b>120.55 306.925</b>	EXECUTIVE TOWER * <b>119.9 (CTAF) 0</b>	GND CON <b>121.7</b>	CLNC DEL <b>124.7</b> (when tower closed)	UNICOM <b>122.95</b>
----------------------	--	--	-------------------------	---	-------------------------



CATEGORY	A	B	C	D
LPV DA	905-1 262 (300-1)			
LNAV/VNAV DA	1088-1½ 445 (500-1½)			
LNAV MDA	1160-1	517 (600-1)	1160-1⅓	517 (600-1⅓)
CIRCLING	1160-1	513 (600-1)	1200-1½ 553 (600-1½)	1460-2¾ 813 (900-2¾)



EC-3, 22 APR 2021 to 20 MAY 2021

EC-3, 22 APR 2021 to 20 MAY 2021

VOR/DME OBK	APP CRS	Rwy Idg TDZE	5001
<b>113.0</b>	<b>164°</b>	643	
Chan 77		Apt Elev	647

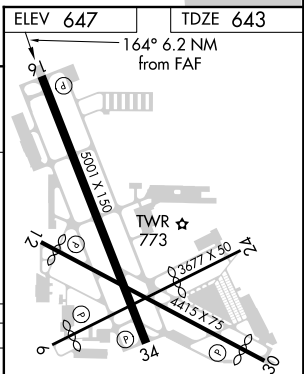
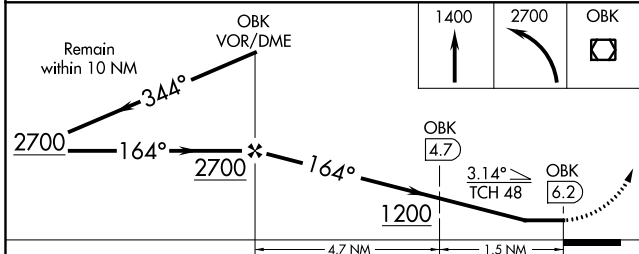
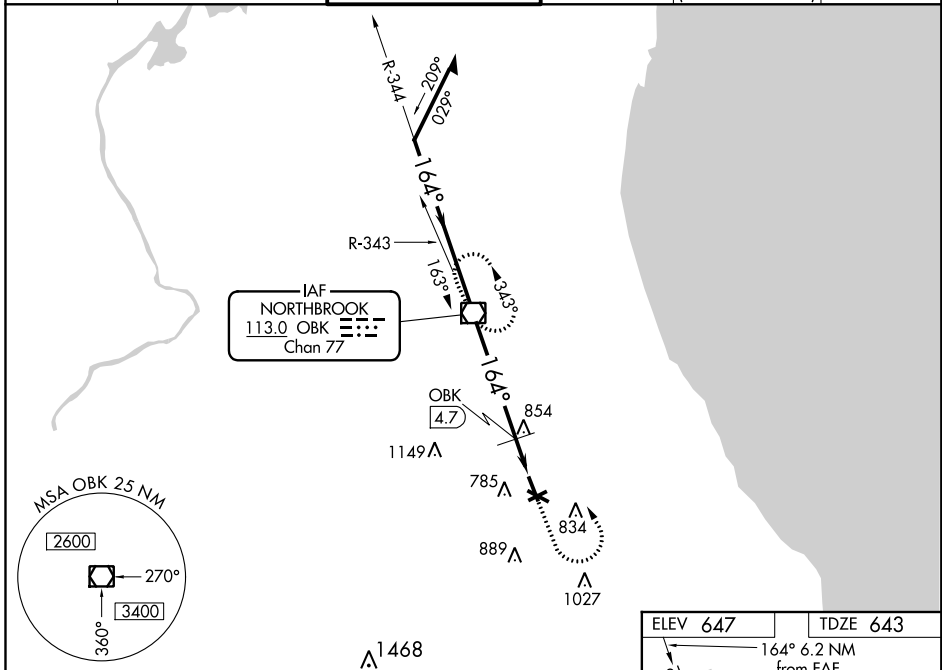
# VOR RWY 16

CHICAGO EXEC (PWK)

**▽** Rwy 16 helicopter visibility reduction below 3/4 SM NA. When local altimeter setting not received, use Chicago-O'Hare Intl altimeter setting: increase all MDAs 40 feet and visibility DME minimums S-16 Cats C and D 1/4 SM. Circling Rwy 6, 12, 24, 30 NA at night.

**▲** MISSED APPROACH: Climb to 1400, then climbing left turn to 2700 direct OBK VOR/DME and hold.

ATIS <b>124.2</b>	CHICAGO APP CON <b>120.55 306.925</b>	EXECUTIVE TOWER ★ <b>119.9 (CTAF) 0</b>	GND CON <b>121.7</b>	CLNC DEL <b>124.7</b> (when tower closed)	UNICOM <b>122.95</b>
----------------------	--	--	-------------------------	---	-------------------------



CATEGORY	A	B	C	D
S-16	1200-1	557 (600-1)	1200-1½ 557 (600-1½)	1200-1¾ 557 (600-1¾)
CIRCLING	1200-1	553 (600-1)	1200-1½ 553 (600-1½)	1460-2¾ 813 (900-2¾)
DME MINIMUMS				
S-16	1120-1	477 (500-1)	1120-1¼ 477 (500-1¼)	1120-1½ 477 (500-1½)
CIRCLING	1140-1 493 (500-1)	1160-1 513 (600-1)	1200-1½ 553 (600-1½)	1460-2¾ 813 (900-2¾)

HIRL Rwy 16-34	0
MIRL Rws 6-24 and 12-30	0
REIL Rws 12 and 30	0
REIL Rws 16 and 34	0
RLS Rwy 16	0
FAF to MAP 6.2 NM	
Knots	60 90 120 150 180
Min:Sec	6:12 4:08 3:06 2:29 2:04

EC-3, 22 APR 2021 to 20 MAY 2021

EC-3, 22 APR 2021 to 20 MAY 2021