

APP CRS <b>342°</b>	Rwy Idg TDZE Apt Elev	<b>N/A</b> <b>N/A</b> <b>534</b>
------------------------	-----------------------------	--

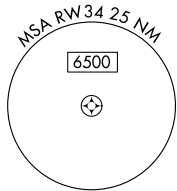
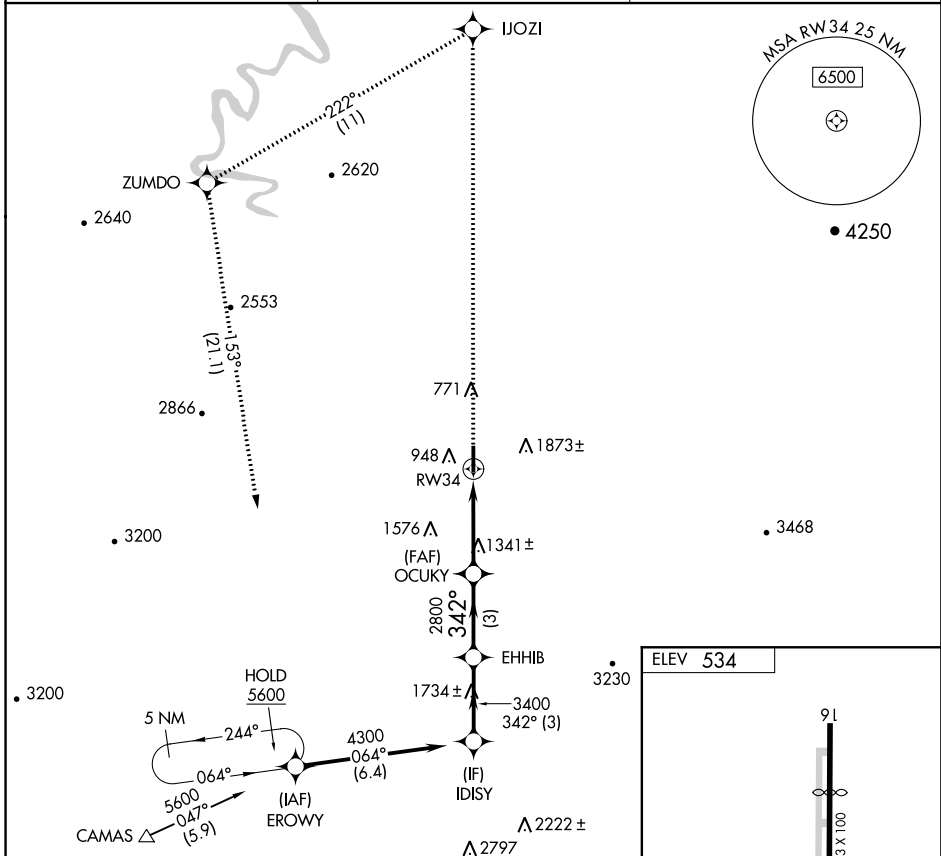
# RNAV (GPS)-B

ROSEBURG RGNL (R.B.G)

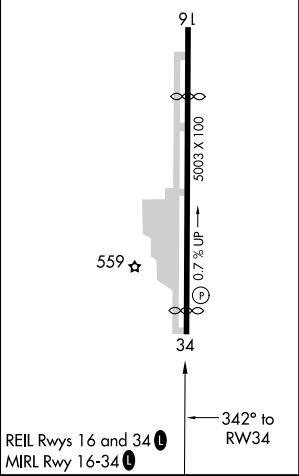
**▼** DME/DME RNP-0.3 NA. Rwy 16, 34 helicopter visibility reduction below 1 SM NA. Procedure NA at night.  
**▲** Circling NA east of Rwy 16-34.

**MISSED APPROACH:** Climb to 5600 direct IJOZI and left turn on track 222° to ZUMDO and left turn on track 153° to EROWY and hold.

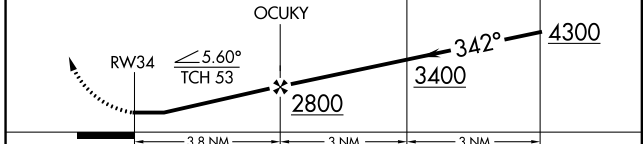
ASOS <b>135.475</b>	SEATTLE CENTER <b>127.55 239.0</b>	UNICOM <b>122.8 (CTAF)</b>
------------------------	---------------------------------------	-------------------------------



ELEV 534



5600	IJOZI	ZUMDO	EROWY	VGSI and descent angles not coincident (VGSI Angle 4.00/ TCH 53).
↑	tr 222°	tr 153°		EHHIB IDISY



CATEGORY	A	B	C	D
CIRCLING	1700-1¼ 1166 (1200-1¼)	1700-1½ 1166 (1200-1½)	1700-3 1166 (1200-3)	1920-3 1386 (1400-3)

REIL Rwys 16 and 34  
 MRL Rwy 16-34

NW-1, 15 AUG 2019 to 12 SEP 2019

NW-1, 15 AUG 2019 to 12 SEP 2019

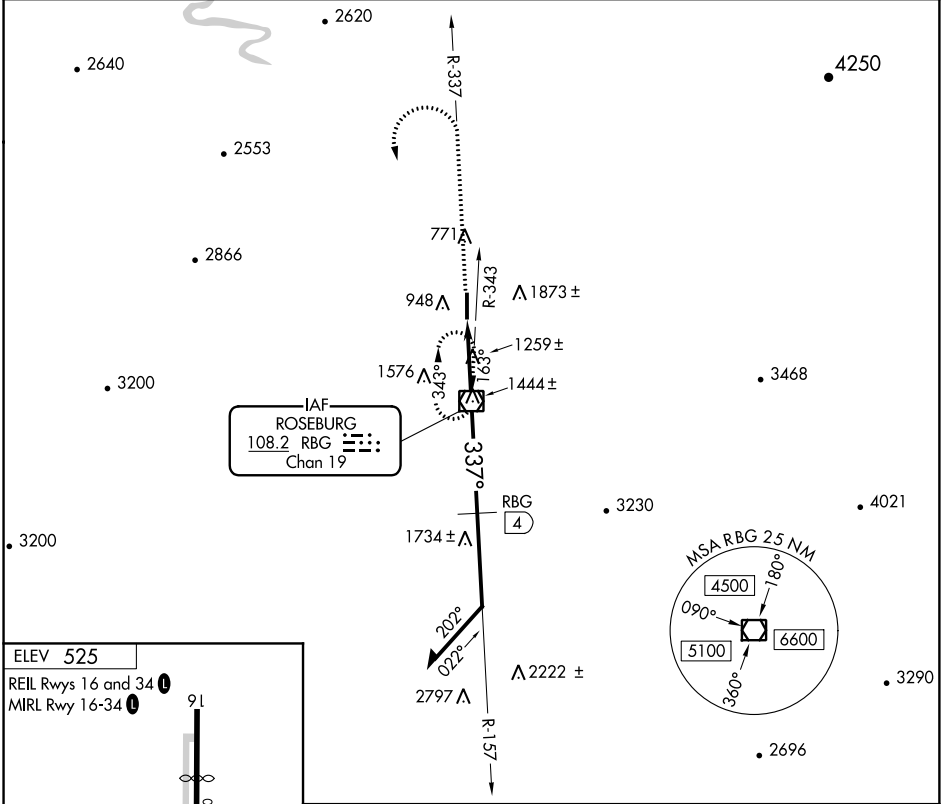
VOR/DME RBG <b>108.2</b> Chan <b>19</b>	APP CRS <b>337°</b>	Rwy Idg TDZE Apt Elev <b>525</b>	<b>N/A</b> <b>N/A</b> <b>525</b>
---	------------------------	--	--

**VOR-A**  
ROSEBURG RGNL (RBG)

**⚠** Circling not authorized east of Rwy 16-34.  
**⚠** Procedure NA at night.  
 Rwy 34 helicopter visibility below 1 SM NA.

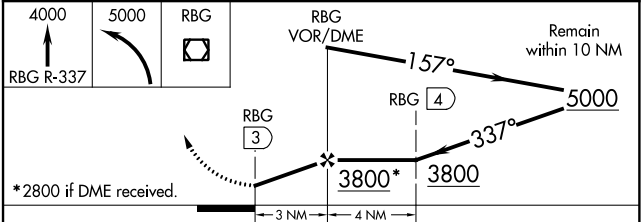
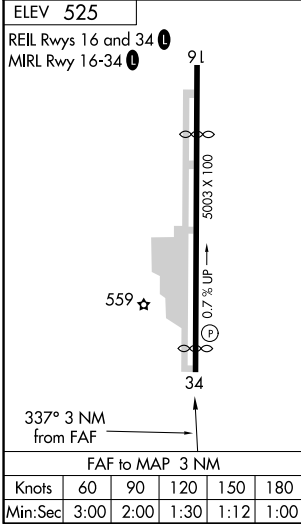
MISSED APPROACH: Climb to 4000 via RBG R-337 within 15 NM; then climbing left turn to 5000 direct RBG VOR/DME and hold.

ASOS <b>135.475</b>	SEATTLE CENTER <b>127.55 239.0</b>	UNICOM <b>122.8</b> (CTAF) <b>0</b>
------------------------	---------------------------------------	--



NW-1, 15 AUG 2019 to 12 SEP 2019

NW-1, 15 AUG 2019 to 12 SEP 2019



CATEGORY	A	B	C	D
CIRCLING	2600-1¼ 2075 (2100-1¼)	2600-1½ 2075 (2100-1½)	2600-3	2075 (2100-3)
DME MINIMUMS				
CIRCLING	1740-1¼ 1215 (1300-1¼)	1740-1½ 1215 (1300-1½)	1740-3 1215 (1300-3)	1920-3 1395 (1400-3)