

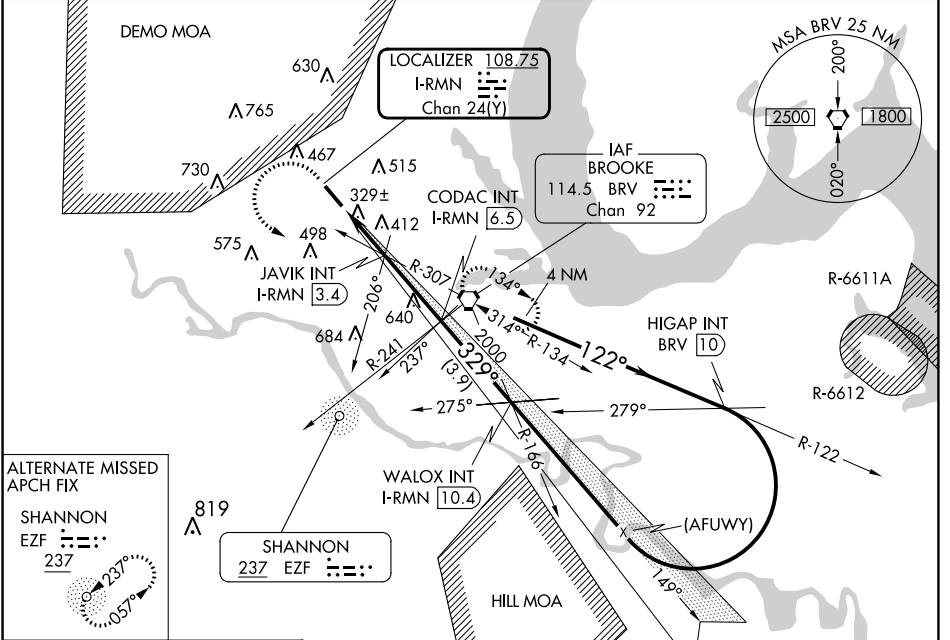
LOC/DME I-RMN	APP CRS	Rwy Idg	5000
108.75	329°	TDZE	196
Chan 24 (Y)		Apt Elev	211

ILS or LOC RWY 33

STAFFORD RGNL (RMN)

<p>▼ If local altimeter setting not received, use Shannon, Fredericksburg, VA altimeter setting and increase all DH/MDAs 40 feet.</p> <p>▲NA Inoperative table does not apply to S-ILS 33 and to S-LOC Cats B and C. DME or ADF required.</p>	MALS	<p>MISSED APPROACH: Climb to 600 then climbing left turn to 2000 direct BRV VORTAC and hold.</p>

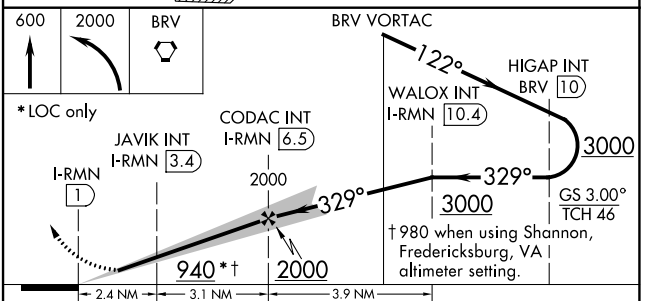
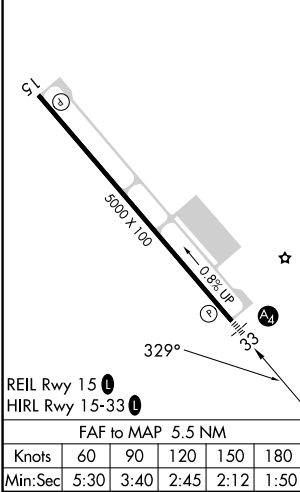
AWOS-3 126.325	QUANTICO APP CON * 127.05 290.375	GO 135.075	UNICOM 122.725 (CTAF) 1
--------------------------	---	----------------------	-----------------------------------



NE-3, 22 FEB 2024 to 21 MAR 2024

NE-3, 22 FEB 2024 to 21 MAR 2024

ELEV 211	TDZE 196
----------	----------



CATEGORY	A	B	C	D
S-ILS 33	396- ³ / ₄ 200 (200- ³ / ₄)			
S-LOC 33	580- ³ / ₄ 384 (400- ³ / ₄)			580-1 ¹ / ₄ 384 (400-1 ¹ / ₄)
CIRCLING	720-1 509 (600-1)	820-1 609 (700-1)	840-1 ³ / ₄ 629 (700-1 ³ / ₄)	1040-2 ³ / ₄ 829 (900-2 ³ / ₄)

WAAS CH 81805 W33A	APP CRS 329°	Rwy Idg TDZE Apt Elev	5000 195 211
--	------------------------	-----------------------------	---

RNAV (GPS) RWY 33

STAFFORD RGNL (R.MN)

RNP APCH - GPS.

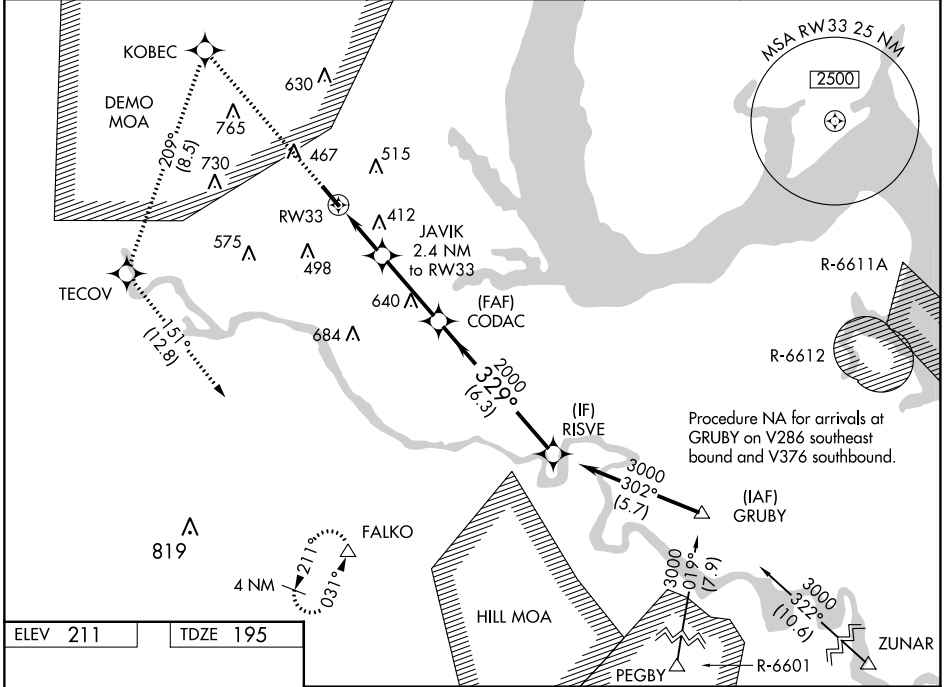
⚠ Inop table does not apply to LPV all Cats. For uncompensated Baro-VNAV systems, LNAV/VNAV NA below -15°C or above 54°C. For inop ALS, increase LNAV Cat C/D visibility to 1 3/8 SM.

MALS

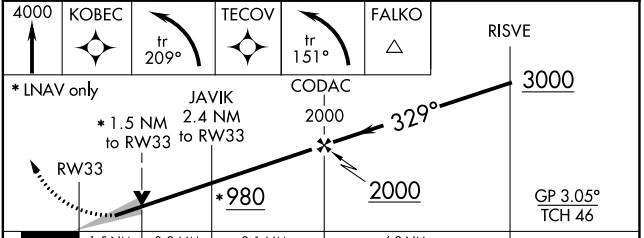
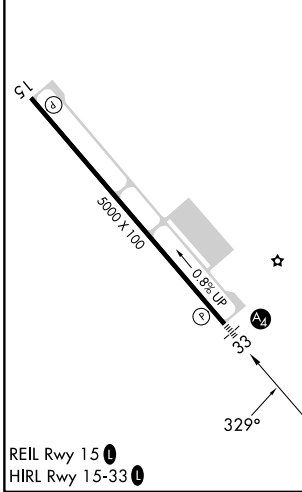


MISSED APPROACH: Climb to 4000 direct KOBEC and left turn on track 209° to TECOV and left turn on track 151° to FALKO and hold.

AWOS-3 126.325	QUANTICO APP CON * 127.05 290.375	GCO 135.075	UNICOM 122.725 (CTAF)
--------------------------	---	-----------------------	---------------------------------



ELEV 211	TDZE 195
----------	----------



CATEGORY	A	B	C	D
LPV DA	450-3/4 255 (300-3/4)		450-1 255 (300-1)	
LNAV/VNAV DA	765-1 3/8		570 (600-1 3/8)	
LNAV MDA	700-3/4 505 (500-3/4)		700-1 1/2 505 (500-1 1/2)	
CIRCLING	720-1 509 (600-1)	820-1 609 (700-1)	840-1 3/4 629 (700-1 3/4)	1040-2 3/4 829 (900-2 3/4)

NE-3, 22 FEB 2024 to 21 MAR 2024

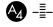
NE-3, 22 FEB 2024 to 21 MAR 2024

VORTAC BRV	APP CRS	Rwy Idg	5000
114.5	314°	TDZE	196
Chan 92		Apt Elev	211

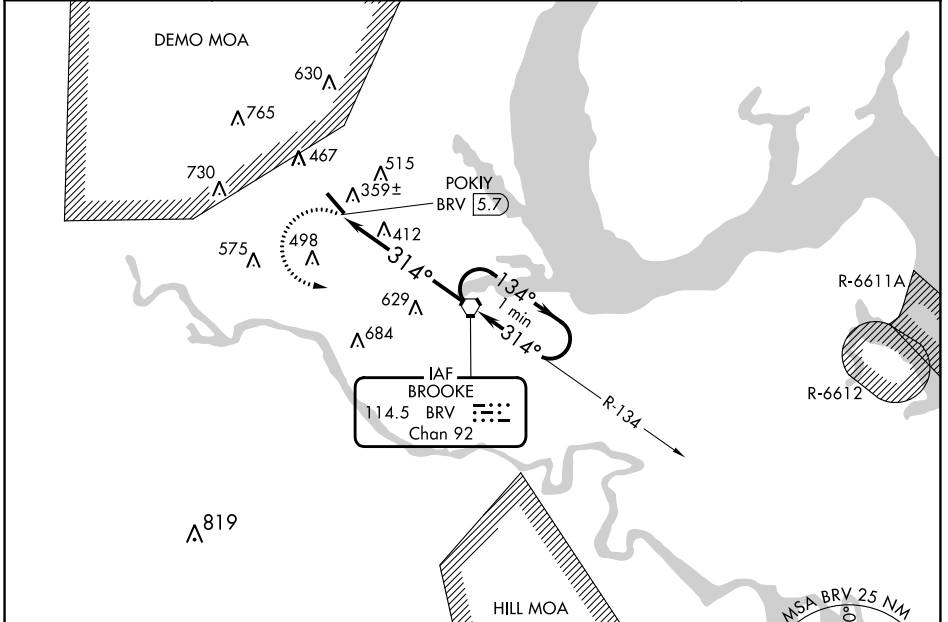
VOR RWY 33

STAFFORD RGNL (R.M.N)

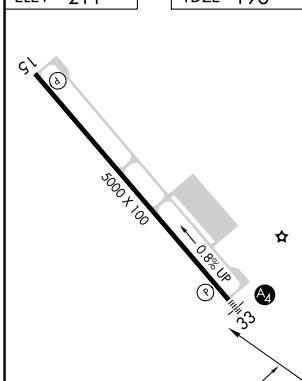
▽ If local altimeter setting not received, use Shannon, Fredericksburg, VA altimeter setting and increase all MDAs 40 feet. VDP NA with Shannon, Fredericksburg, VA altimeter setting. Inoperative table does not apply to Cat C.



MALS  MISSED APPROACH: Climbing left turn to 2000 direct BRV VORTAC and hold.

AWOS-3 126.325	QUANTICO APP CON* 127.05 290.375	GCO 135.075	UNICOM 122.725 (CTAF) 0
--------------------------	--	-----------------------	-----------------------------------



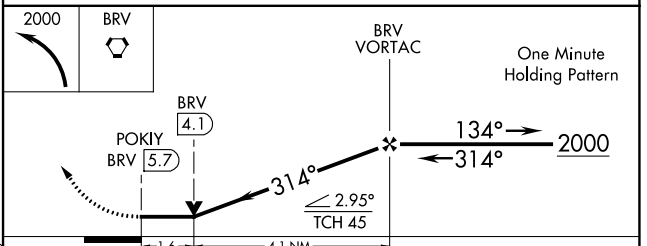
ELEV 211	TDZE 196
----------	----------



REIL Rwys 15 
 HIRL Rwy 15-33 

FAF to MAP 5.7 NM

Knots	60	90	120	150	180
Min:Sec	5:42	3:48	2:51	2:17	1:54



CATEGORY	A	B	C	D
S-33	740-¾ 544 (600-¾)		740-1½ 544 (600-1½)	740-1¾ 544 (600-1¾)
CIRCLING	740-1 509 (600-1)	820-1 609 (700-1)	840-1¾ 629 (700-1¾)	1040-2¾ 829 (900-2¾)

NE-3, 22 FEB 2024 to 21 MAR 2024

NE-3, 22 FEB 2024 to 21 MAR 2024