

NDB RVN 329	APP CRS 073°	Rwy Idg 3502
		TDZE 1255
		Apt Elev 1255

NDB RWY 7

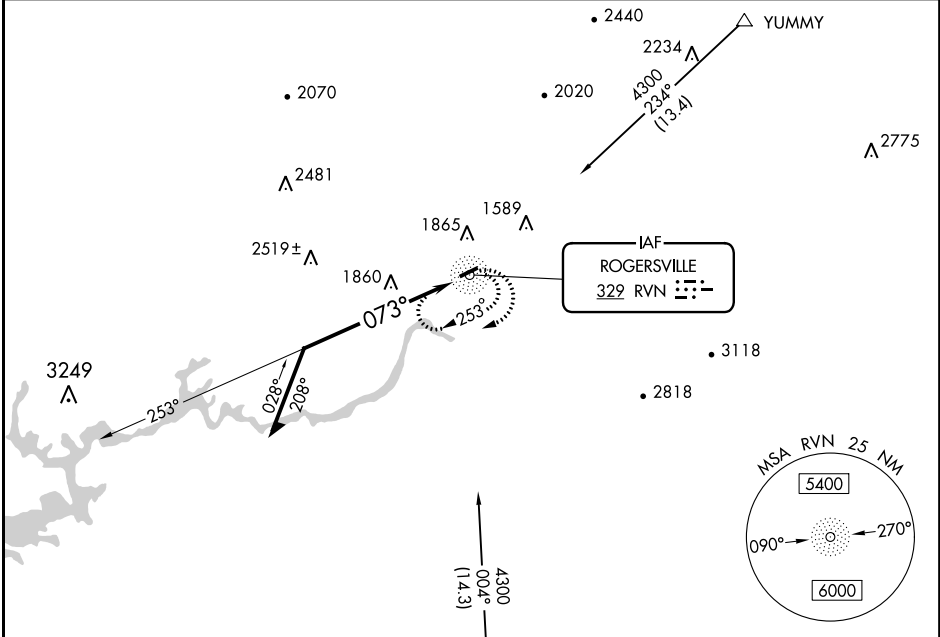
HAWKINS COUNTY (RVN)

NA Procedure NA at night. Obtain local altimeter setting on CTAF, when not received use Tri-Cities Rgnl altimeter setting and increase all MDA 120 feet. Rwy 7 helicopter visibility reduction below 1 SM NA.

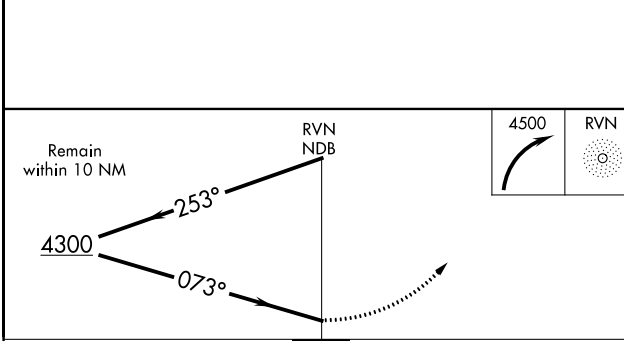
MISSED APPROACH: Climbing right turn to 4500 in RVN NDB holding pattern.

TRI CITY APP CON ★
128.05 317.5

UNICOM
122.8 (CTAF)



ELEV	1255	TDZE	1255
------	------	------	------



ELEV	1255	TDZE	1255
------	------	------	------

MIRL Rwy 7-25
REIL Rws 7 and 25

CATEGORY	A	B	C	D
S-7	2900-1¼ 1645 (1700-1¼)	2900-1½ 1645 (1700-1½)	2900-3 1645 (1700-3)	NA
CIRCLING	2900-1¼ 1645 (1700-1¼)	2900-1½ 1645 (1700-1½)	2900-3 1645 (1700-3)	NA

SE-1, 05 DEC 2019 to 02 JAN 2020

SE-1, 05 DEC 2019 to 02 JAN 2020

WAAS CH 69340 W225A	APP CRS 251°	Rwy Idg TDZE Apt Elev	3502 1254 1255
-----------------------------------------	------------------------	-----------------------------	-------------------------------------------

RNAV (GPS) RWY 25

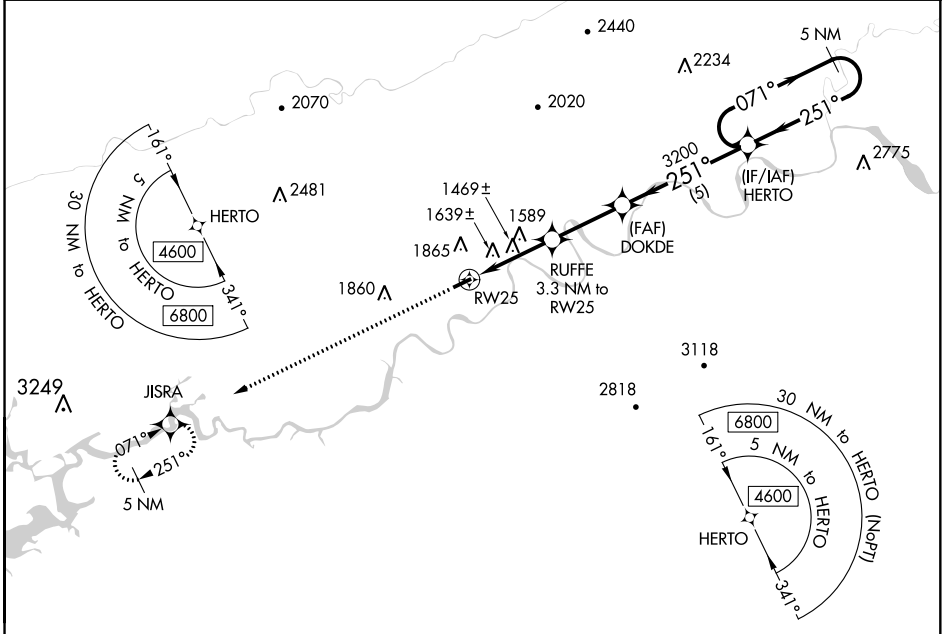
HAWKINS COUNTY (RVN)

NA DME/DME RNP-0.3 NA. Procedure NA at night. Obtain local altimeter setting on CTAF; when not received, use Tri-Cities altimeter setting and increase all MDA 120 feet, increase LP Cat C visibility $\frac{3}{8}$ SM, LNAV Cat B visibility $\frac{1}{4}$ SM, Cat C visibility $\frac{5}{8}$ SM, and increase Circling Cat B visibility $\frac{1}{4}$ SM. Rwy 7, 25 helicopter visibility reduction below 1 SM.

MISSED APPROACH:
Climb to 4300 direct JISRA and hold.

TRI CITY APP CON ★
128.05 317.5

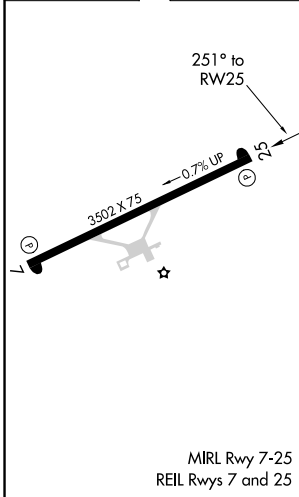
UNICOM
122.8 (CTAF)



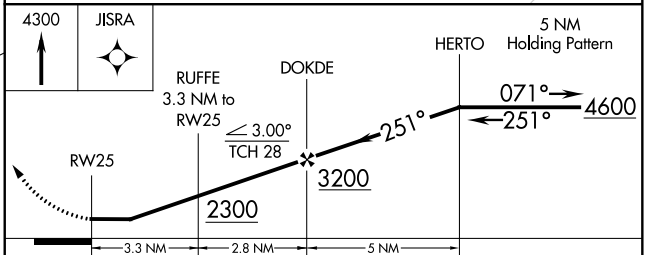
SE-1, 05 DEC 2019 to 02 JAN 2020

SE-1, 05 DEC 2019 to 02 JAN 2020

ELEV 1255	TDZE 1254
-----------	-----------



MIRL Rwy 7-25
REIL Rwy 7 and 25



CATEGORY	A	B	C	D
LP MDA	1720-1	466 (500-1)	1720-1 $\frac{3}{8}$ 466 (500-1 $\frac{3}{8}$)	NA
LNAV MDA	1900-1	646 (700-1)	1900-1 $\frac{7}{8}$ 646 (700-1 $\frac{7}{8}$)	NA
CIRCLING	2180-1 $\frac{1}{4}$	925 (1000-1 $\frac{1}{4}$)	2320-3 1065 (1100-3)	NA

WAAS CH 58040 W07A	APP CRS 071°	Rwy Idg TDZE Apt Elev	3502 1255 1255
----------------------------------------	------------------------	-----------------------------	-------------------------------------------

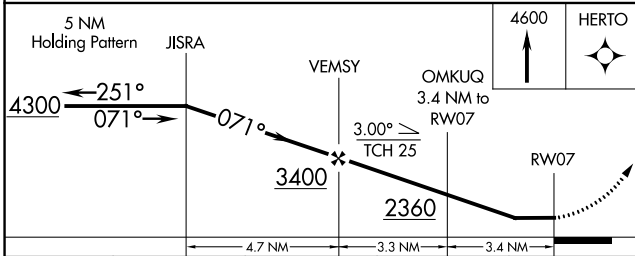
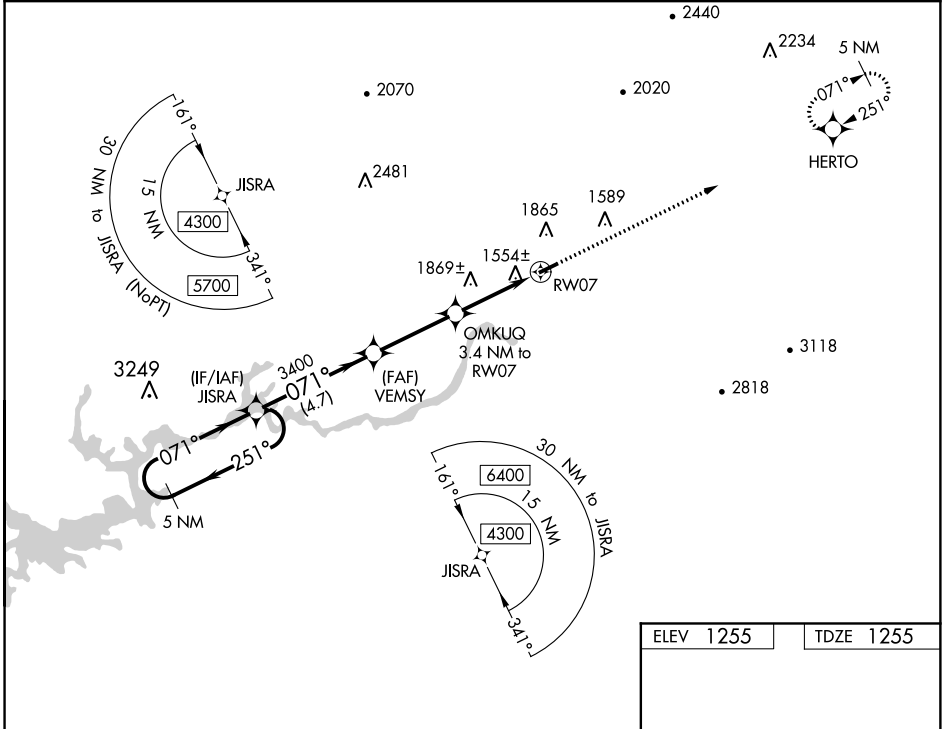
RNAV (GPS) RWY 7

HAWKINS COUNTY (RVN)

NA DME/DME RNP-0.3 NA. Procedure NA at night. Obtain local altimeter setting on CTAF; when not received, use Tri-Cities altimeter setting and increase all MDA 120 feet, increase LP Cat C visibility $\frac{3}{8}$ SM, increase LNAV Cat A and Circling Cat B visibility $\frac{1}{4}$ SM. Rwy 7, 25 helicopter visibility reduction below 1 SM NA.

MISSED APPROACH: Climb to 4600 direct HERTO and hold, continue climb-in-hold to 4600.

TRI CITY APP CON ★ 128.05 317.5	UNICOM 122.8 (CTAF)
-------------------------------------------	-------------------------------



ELEV 1255	TDZE 1255
MIRL Rwy 7-25 REIL Rwys 7 and 25	

CATEGORY	A	B	C	D
LP MDA	1820-1	565 (600-1)	1820-1 $\frac{1}{8}$ 565 (600-1 $\frac{1}{8}$)	NA
LNAV MDA	2040-1 785 (800-1)	2040-1 $\frac{1}{4}$ 785 (800-1 $\frac{1}{4}$)	2040-2 $\frac{1}{2}$ 785 (800-2 $\frac{1}{2}$)	NA
CIRCLING	2180-1 $\frac{1}{4}$	925 (1000-1 $\frac{1}{4}$)	2320-3 1065 (1100-3)	NA

SE-1, 05 DEC 2019 to 02 JAN 2020

SE-1, 05 DEC 2019 to 02 JAN 2020