

WAAS CH <b>40335</b> W22A	APP CRS <b>220°</b>	Rwy Idg <b>5000</b> TDZE <b>615</b> Apt Elev <b>615</b>
---------------------------------	------------------------	---

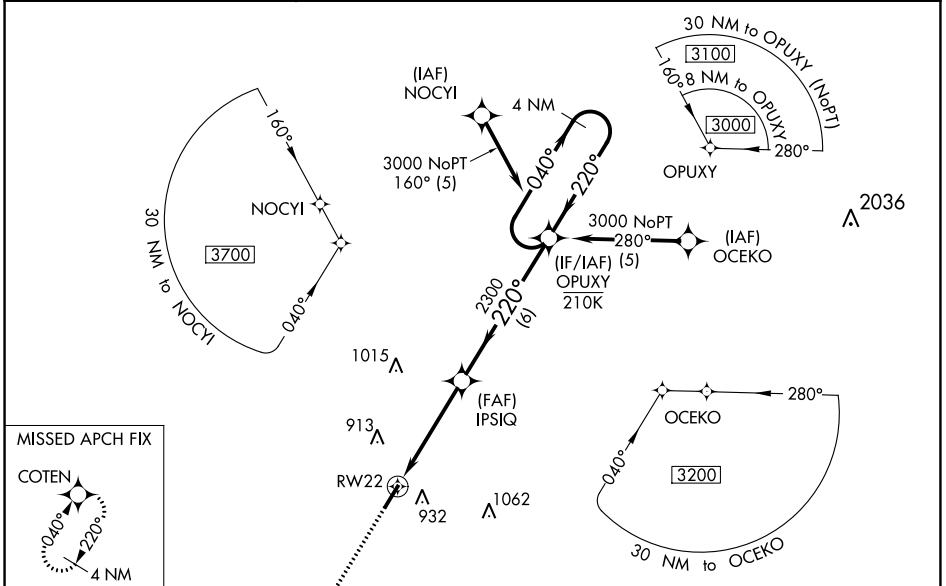
# RNAV (GPS) RWY 22

SILER CITY MUNI (SCR)

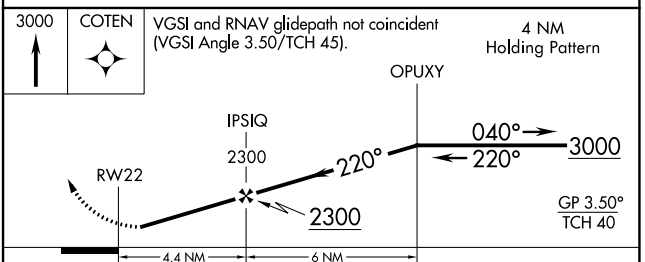
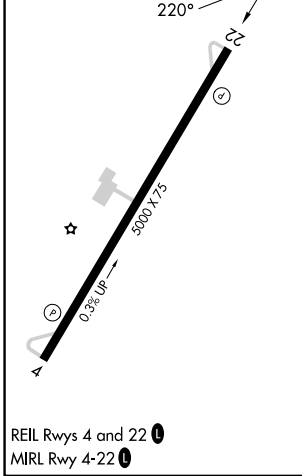
**⚠** For uncompensated Baro-VNAV systems, LNAV/VNAV NA below -16°C (4°F) or above 54°C (130°F). DME/DME RNP-0.3 NA. Procedure NA at night. Baro-VNAV NA when using Asheboro altimeter setting. Rwy 4, 22 helicopter visibility reduction below 1 SM NA. When local altimeter setting not received, use Asheboro altimeter setting: increase all DA 53 feet and all MDA 60 feet; increase LPV all Cats, LNAV/VNAV all Cats, and LNAV Cat C visibilities 1/8 mile, increase Circling Cat C visibility 1/4 mile.

**MISSED APPROACH:**  
Climb to 3000 direct COTEN and hold.

AWOS-3 <b>125.775</b>	GREENSBORO APP CON <b>126.6 327.075</b>	UNICOM <b>122.7 (CTAF) 0</b>
--------------------------	--	---------------------------------



ELEV 615	TDZE 615
----------	----------



CATEGORY	A	B	C	D
LPV DA	954-1 339 (400-1)			NA
LNAV/VNAV DA	1140-1 5/8 525 (600-1 5/8)			NA
LNAV MDA	1160-1	545 (600-1)	1160-1 5/8 545 (600-1 5/8)	NA
<b>C</b> CIRCLING	1240-1	625 (700-1)	1240-1 3/4 625 (700-1 3/4)	NA

SE-2, 22 FEB 2024 to 21 MAR 2024

SE-2, 22 FEB 2024 to 21 MAR 2024

WAAS CH <b>42935</b> <b>W04A</b>	APP CRS <b>040°</b>	Rwy Idg TDZE <b>605</b> Apt Elev <b>615</b>
--	------------------------	---

# RNAV (GPS) RWY 4

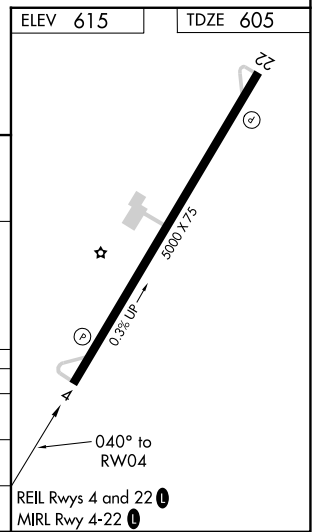
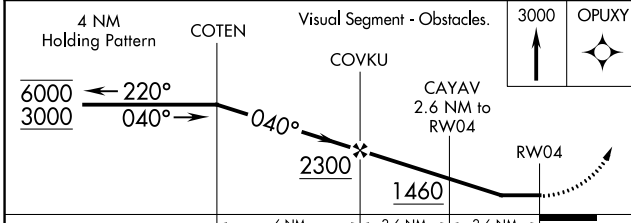
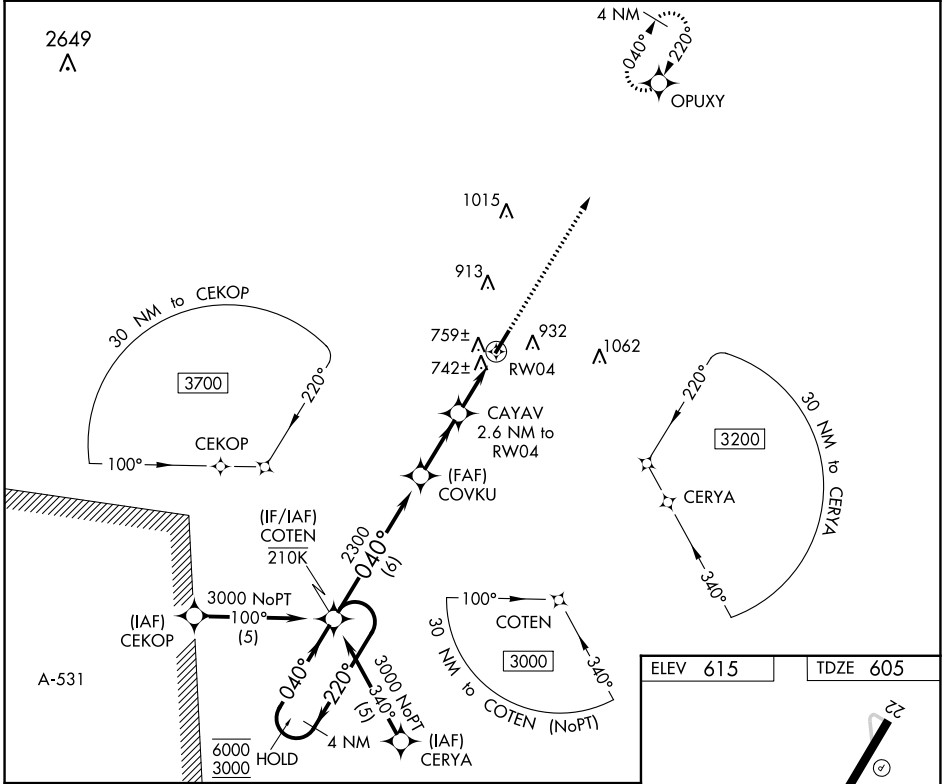
SILER CITY MUNI (SCR)

RNP APCH.

**Procedure NA at night. Rwy 4, 22 helicopter visibility reduction below 1 SM NA. When local altimeter setting not received, use Asheboro Rgnl altimeter setting: increase all MDA 60 feet, increase LP and Circling Cat C visibilities ¼ SM, and increase LNAV Cat C visibility ½ SM.**

**MISSED APPROACH:**  
Climb to 3000 direct OPUXY and hold.

AWOS-3 <b>125.775</b>	GREENSBORO APP CON <b>126.6 327.075</b>	UNICOM <b>122.7 (CTAF) 0</b>
--------------------------	--	---------------------------------



CATEGORY	A	B	C	D
LP MDA	1000-1	395 (400-1)	1000-1½ 395 (400-1½)	NA
LNAV MDA	1020-1	415 (500-1)	1020-1¼ 415 (500-1¼)	NA
<b>C</b> CIRCLING	1240-1	625 (700-1)	1240-1¾ 625 (700-1¾)	NA

SE-2, 22 FEB 2024 to 21 MAR 2024

SE-2, 22 FEB 2024 to 21 MAR 2024