

NDB SIF	APP CRS	Rwy Idg	5200
423	315°	TDZE	668
		Apt Elev	694

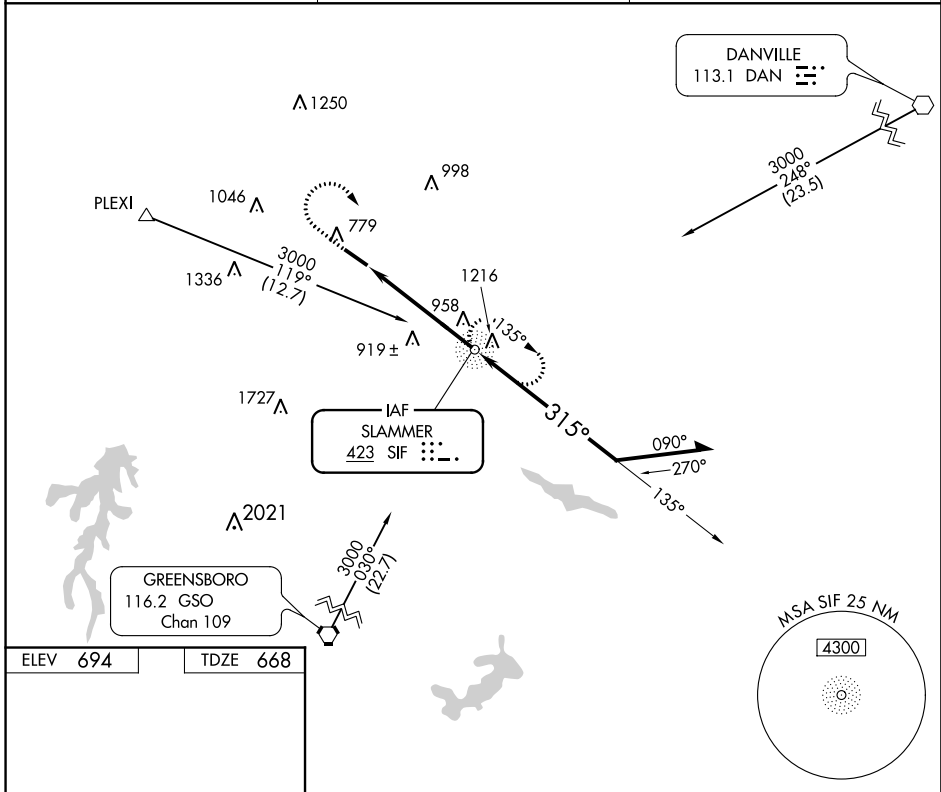
NDB RWY 31

ROCKINGHAM COUNTY NC SHILOH (SIF)

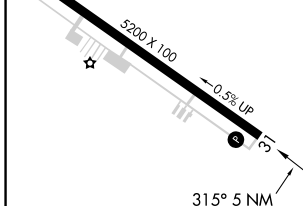
▼ Rwy 31 helicopter visibility reduction below 1 SM NA.
▲ Procedure NA at night.

MISSED APPROACH: Climb to 1600 then climbing right turn to 2600 direct SIF NDB and hold.

AWOS-3 119,775	GREENSBORO APP CON 124.35 269.225	UNICOM 122.8 (CTAF) 0
--------------------------	---	---------------------------------



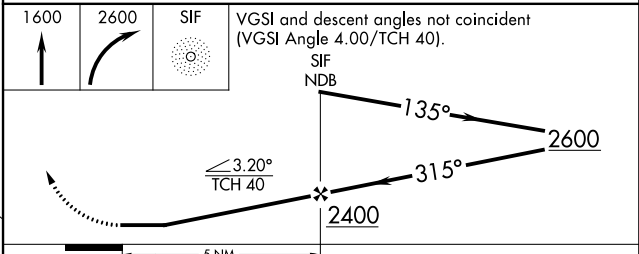
ELEV 694	TDZE 668
----------	----------



REIL Rwy 31 0
 HIRL Rwy 13-31 0

FAF to MAP 5 NM

Knots	60	90	120	150	180
Min:Sec	5:00	3:20	2:30	2:00	1:40



CATEGORY	A	B	C	D
S-31	1220-1 552 (600-1)		1220-1½ 552 (600-1½)	1220-1¾ 552 (600-1¾)
CIRCLING	1280-1 586 (600-1)		1320-1¾ 626 (700-1¾)	1320-2 626 (700-2)

SE-2: 05 DEC 2019 to 02 JAN 2020

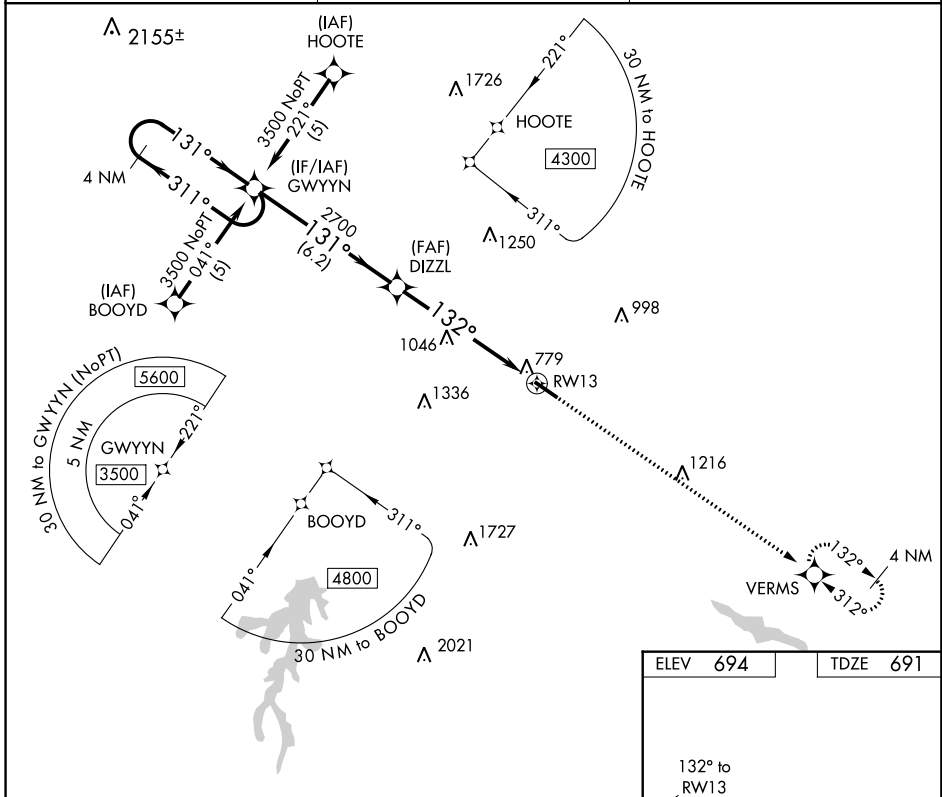
SE-2: 05 DEC 2019 to 02 JAN 2020

APP CRS
132°
Rwy Idg **4999**
TDZE **691**
Apt Elev **694**

RNAV (GPS) RWY 13
ROCKINGHAM COUNTY NC SHILOH (SIF')

RNP APCH.
 ▼ Rwy 13 helicopter visibility reduction below 1 SM NA.
 ▲ Procedure NA at night.
 MISSED APPROACH: Climb to 3600 direct VERMS and hold.

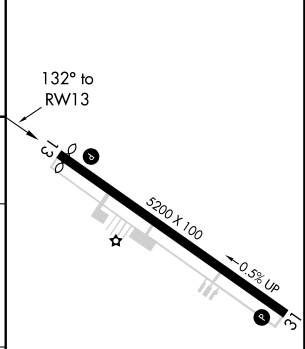
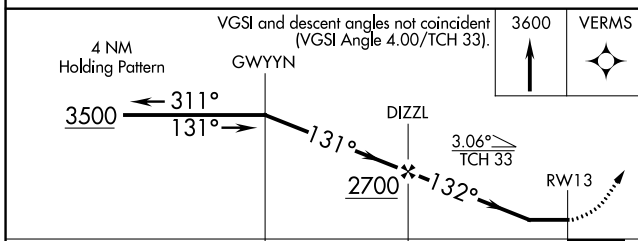
AWOS-3 **119.775** GREENSBORO APP CON **124.35 269.225** UNICOM **122.8 (CTAF) 0**



SE-2: 05 DEC 2019 to 02 JAN 2020

SE-2: 05 DEC 2019 to 02 JAN 2020

ELEV 694 TDZE 691



CATEGORY	A	B	C	D
LNAV MDA	1300-1	609 (700-1)	1300-1¼ 609 (700-1¼)	1300-2 609 (700-2)
CIRCLING	1300-1	606 (700-1)	1320-1¼ 626 (700-1¼)	1320-2 626 (700-2)

REIL Rwy 31 0
HIRL Rwy 13-31 0

APP CRS	Rwy Idg	5200
312°	TDZE	668
	Apt Elev	694

RNAV (GPS) RWY 31

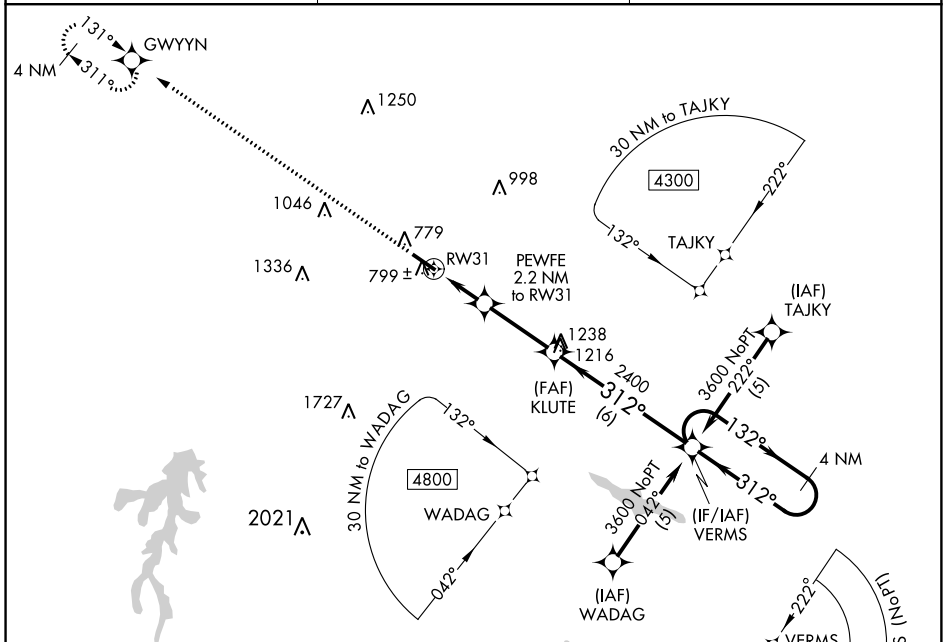
ROCKINGHAM COUNTY NC SHILOH (SIF)

RNP APCH.

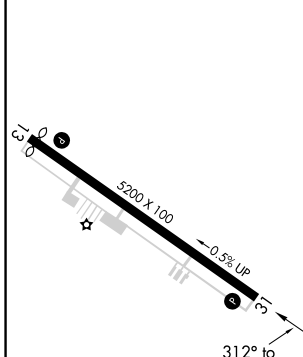
▼ Rwy 31 helicopter visibility reduction below 1 SM NA. MISSED APPROACH: Climb to 3500 direct GWYNN and hold.

▲ Procedure NA at night.

AWOS-3 119.775	GREENSBORO APP CON 124.35 269.225	UNICOM 122.8 (CTAF) 0
--------------------------	---	---------------------------------



ELEV	694	TDZE	668
------	------------	------	------------



CATEGORY	A	B	C	D
LNAV MDA	1060-1 392 (400-1)			1060-1½ 392 (400-1½)
CIRCLING	1280-1	586 (600-1)	1320-1¾ 626 (700-1¾)	1320-2 626 (700-2)

REIL Rwy 31 0	HIRL Rwy 13-31 0
---------------	------------------

SE-2: 05 DEC 2019 to 02 JAN 2020

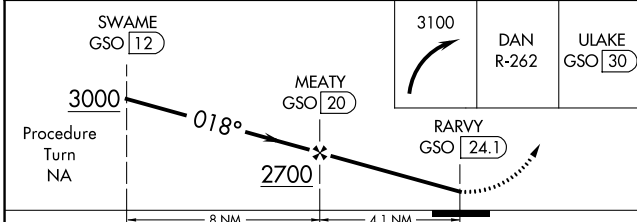
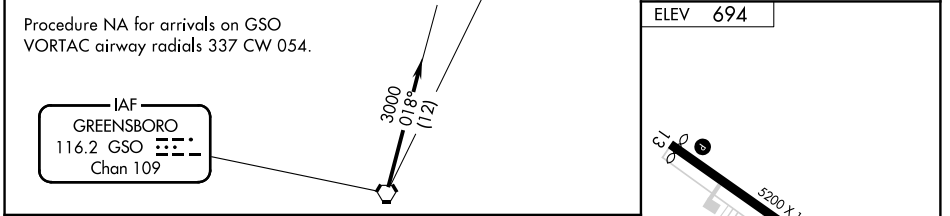
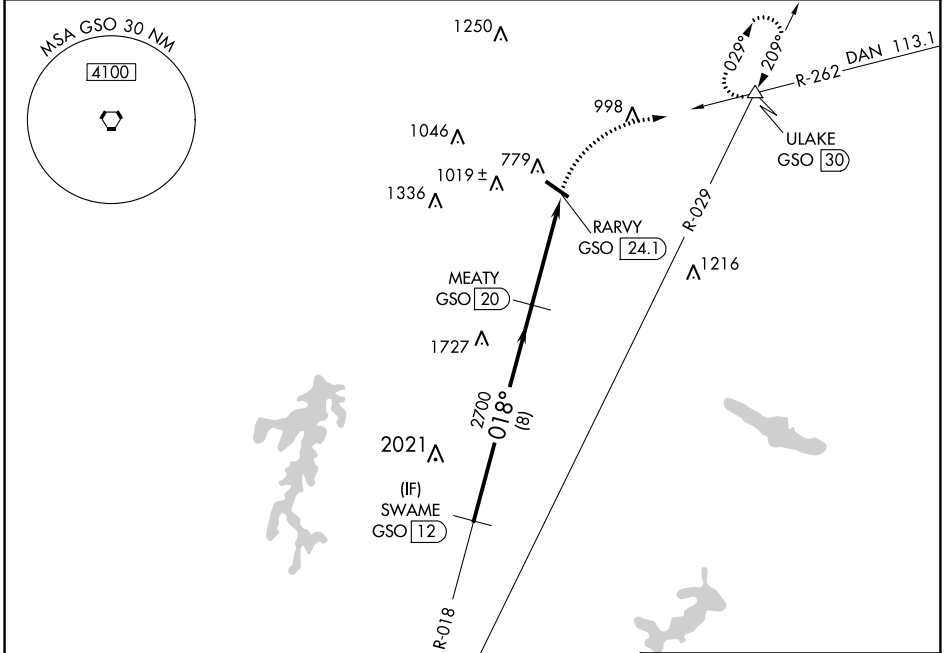
SE-2: 05 DEC 2019 to 02 JAN 2020

VORTAC GSO 116.2 Chan 109	APP CRS 018°	Rwy Idg TDZE Apt Elev N/A N/A 694
---	------------------------	--

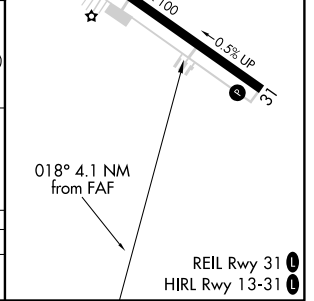
VOR/DME-A
ROCKINGHAM COUNTY NC SHILOH (SIF)

<p>NA Helicopter visibility reduction NA. Procedure NA at night.</p>	<p>MISSED APPROACH: Climbing right turn to 3100 via DAN VOR R-262 to ULAKE/GSO 30 DME and hold.</p>
---	---

AWOS-3 119.775	GREENSBORO APP CON 124.35 269.225	UNICOM 122.8 (CTAF)
--------------------------	---	-------------------------------



CATEGORY	A	B	C	D
CIRCLING	1400-1 706 (800-1)	1400-1¼ 706 (800-1¼)	1400-2 706 (800-2)	1400-2¼ 706 (800-2¼)



SE-2: 05 DEC 2019 to 02 JAN 2020

SE-2: 05 DEC 2019 to 02 JAN 2020