

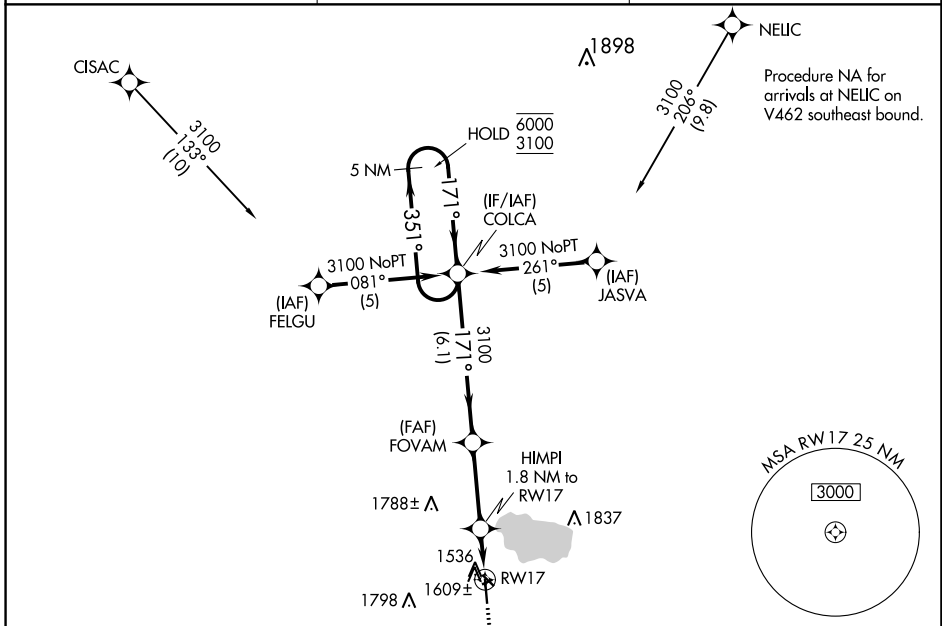
APP CRS	Rwy Idg	<b>5002</b>
<b>171°</b>	TDZE	<b>1484</b>
	Apt Elev	<b>1488</b>

# RNAV (GPS) RWY 17

STORM LAKE MUNI (SLB)

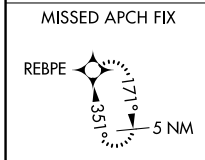
RNP APCH	MISSED APPROACH: Climb to 3100 direct REBPE and hold.
<p>▼ Circling NA to Rwys 6 and 24. Straight-in Rwy 17 NA at night, Circling Rwy 13, 17 NA at night.</p>	

AWOS-3 <b>118.525</b>	MINNEAPOLIS CENTER <b>134.0 288.3</b>	UNICOM <b>122.7 (CTAF) 0</b>
--------------------------	--	---------------------------------

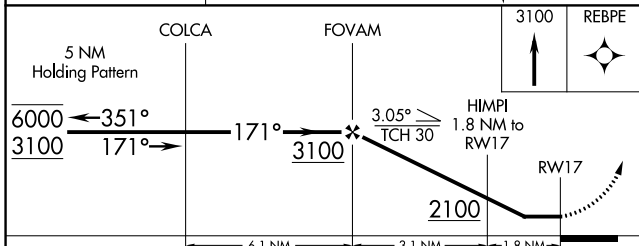
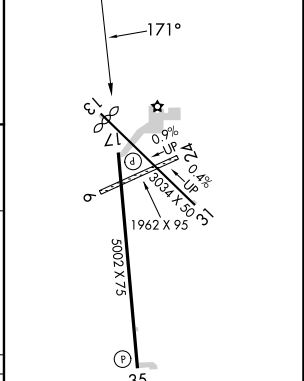


NC-3, 22 FEB 2024 to 21 MAR 2024

NC-3, 22 FEB 2024 to 21 MAR 2024



ELEV 1488	TDZE 1484
-----------	-----------



CATEGORY	A	B	C	D
LNVA MDA	1860-1	376 (400-1)		NA
CIRCLING	1920-1 432 (500-1)	1940-1 452 (500-1)		NA

REIL Rwys 17 and 35 0  
MIRL Rwys 13-31 and 17-35 0

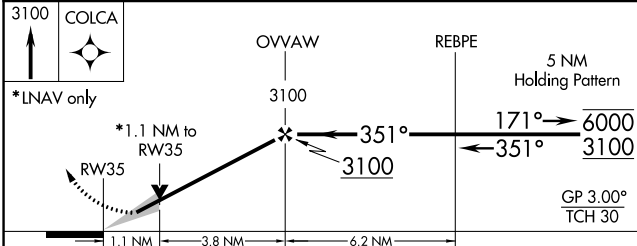
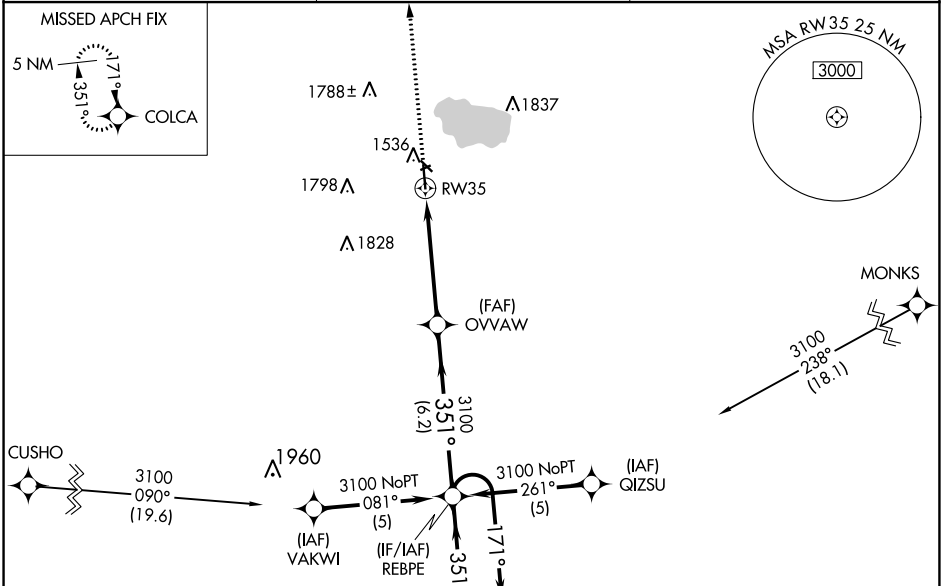
WAAS CH <b>86600</b> <b>W35A</b>	APP CRS <b>351°</b>	Rwy Idg TDZE Apt Elev	<b>5002</b> <b>1484</b> <b>1488</b>
--	------------------------	-----------------------------	---

# RNAV (GPS) RWY 35

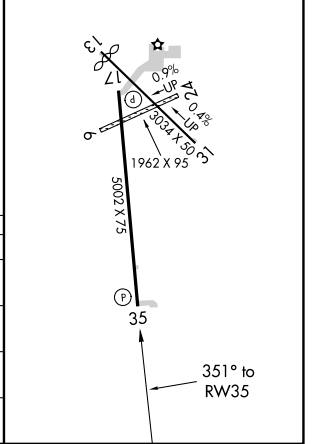
STORM LAKE MUNI (SLB)

RNP APCH.	MISSED APPROACH: Climb to 3100 direct COLCA and hold.
-----------	---

AWOS-3 <b>118.525</b>	MINNEAPOLIS CENTER <b>134.0 288.3</b>	UNICOM <b>122.7 (CTAF) 0</b>
--------------------------	--	---------------------------------



ELEV 1488	TDZE 1484
REIL Rwy 17 and 35 0	
MIRL Rwy 13-31 and 17-35 0	



CATEGORY	A	B	C	D
LPV DA	1734-1	250 (300-1)		NA
LNAV/VNAV DA	1869-1½	385 (400-1½)		NA
LNAV MDA	1860-1	376 (400-1)		NA
CIRCLING	1920-1½ 432 (500-1½)	1940-1½ 452 (500-1½)		NA

NC-3, 22 FEB 2024 to 21 MAR 2024

NC-3, 22 FEB 2024 to 21 MAR 2024