

SNYDER, TEXAS

AL-6013 (FAA)

23110

NDB	SDR	APP CRS	Rwy Idg	5599
359		358°	TDZE	2426
			Apt Elev	2430

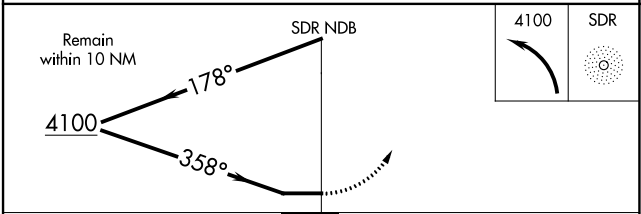
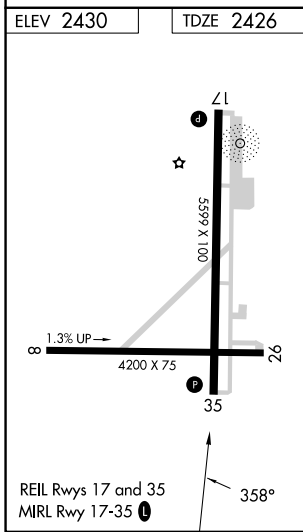
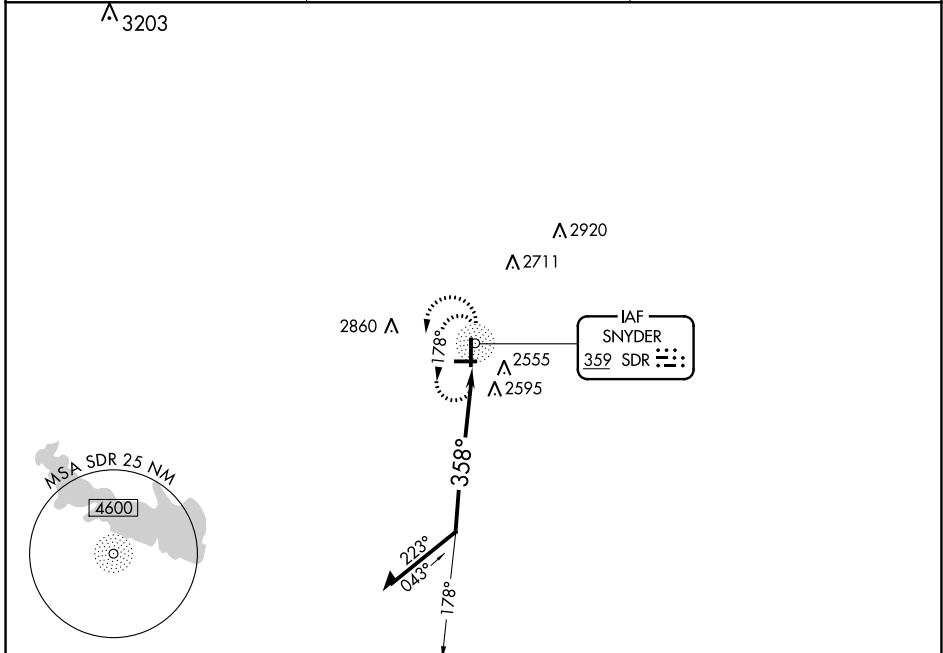
# NDB RWY 35

WINSTON FLD (SNK)

**NA** Circling NA to Rwys 8 and 26. Circling Rwy 17 NA at night.

MISSED APPROACH: Climbing left turn to 4100 in SDR NDB holding pattern.

AWOS-3 <b>119.925</b>	FORT WORTH CENTER <b>127.45 290.3</b>	UNICOM <b>122.8 (CTAF)</b>
--------------------------	--	-------------------------------



CATEGORY	A	B	C	D
S-35	2960-1	534 (600-1)	2960-1½ 534 (600-1½)	NA
CIRCLING	2960-1	530 (600-1)	3220-2¼ 790 (800-2¼)	NA

SNYDER, TEXAS  
Amdt 2D 20APR23

32°42'N-100°57'W

WINSTON FLD (SNK)  
NDB RWY 35

SC-2, 22 FEB 2024 to 21 MAR 2024

SC-2, 22 FEB 2024 to 21 MAR 2024

WAAS CH <b>70331</b> <b>W35A</b>	APP CRS <b>352°</b>	Rwy ldg TDZE <b>2426</b> Apt Elev <b>2430</b>
--	------------------------	---

# RNAV (GPS) RWY 35

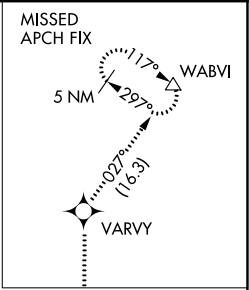
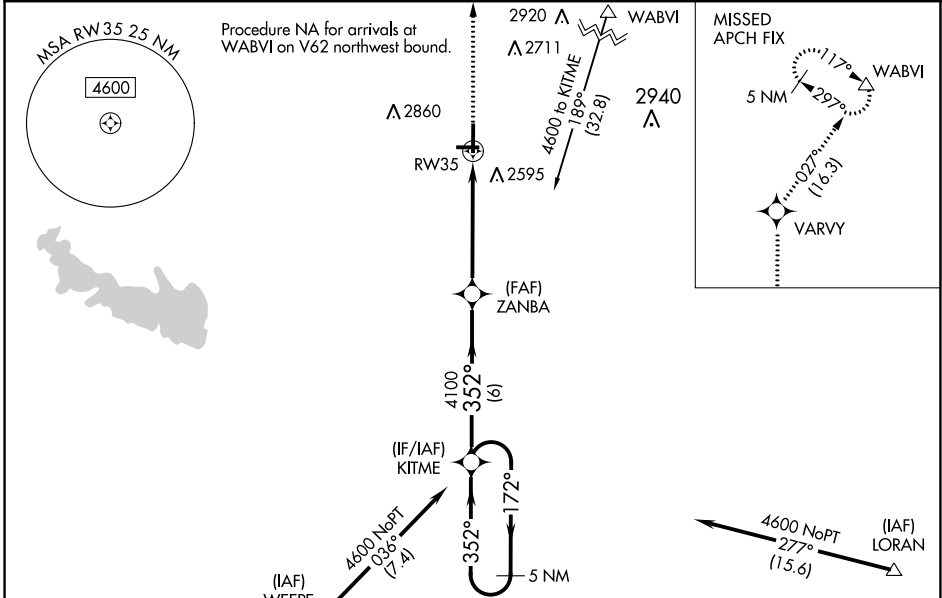
WINSTON FLD (SNK)

**RNP APCH-GPS**

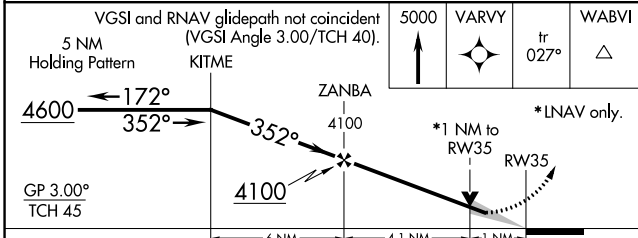
▼ Baro-VNAV NA when using Sweetwater altimeter setting. For uncompensated Baro-VNAV systems, LNAV/VNAV NA below -19°C or above 54°C. VDP NA with Sweetwater altimeter setting. When local altimeter setting not received, use Sweetwater altimeter setting and increase LPV DA to 2698 and all visibilities 1/8 SM; increase LNAV/VNAV DA to 2748 and all visibilities 3/8 SM; increase all MDAs 80 feet and LNAV and Circling visibility Cat C 1/4 SM. Circling NA to Rwys 8 and 26. Circling Rwy 17 NA at night.

**MISSED APPROACH:**  
Climb to 5000 direct VARVY and on track 027° to WABVI and hold, continue climb-in-hold to 6000.

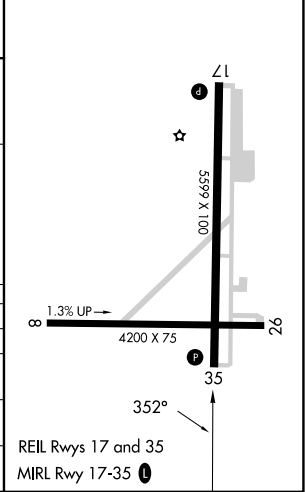
AWOS-3 <b>119.925</b>	FORT WORTH CENTER <b>127.45 290.3</b>	UNICOM <b>122.8 (CTAF)</b>
--------------------------	--	-------------------------------



ELEV 2430	TDZE 2426
-----------	-----------



CATEGORY	A	B	C	D
LPV DA		2626-3/4	200 (200-3/4)	NA
LNAV/VNAV DA		2676-3/4 250 (300-3/4)		NA
LNAV MDA		2780-1 354 (400-1)		NA
CIRCLING	2940-1 510 (600-1)		3220-2 1/4 790 (800-2 1/4)	NA



SC-2, 22 FEB 2024 to 21 MAR 2024

SC-2, 22 FEB 2024 to 21 MAR 2024