

SARASOTA FIVE DEPARTURE

SARASOTA/BRADENTON INTL (SRQ)
SARASOTA (BRADENTON), FLORIDA

SRQ ATIS 124.375
 TPA DEP ATIS 128.475
 CLNC DEL 118.25
 SRQ GND CON 121.9 273.6
 SARASOTA TOWER * 120.1 (CTAF) 256.8
 TAMPA DEP CON 119.65 353.575

SEMINOLE
 117.5 SZW
 Chan 122
 N30°33.37'-W84°22.44'
 L-21-22, H-8

TOP ALTITUDE:
3000

TAYLOR
 112.9 TAY
 Chan 76
 N30°30.28'-W82°33.17'
 L-21-24, H-8-12

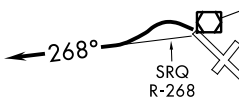
CROSS CITY
 112.0 CTY
 Chan 57
 N29°35.94'-W83°02.93'
 L-21-24, H-8

GATORS
 116.2 GNV
 Chan 109
 N29°41.53'-W82°16.38'
 L-21-24, H-8-12

ST PETERSBURG
 116.4 PIE
 Chan 111
 N27°54.47'-W82°41.06'
 L-21-24, H-8

LAKELAND
 116.0 LAL
 Chan 107
 N27°59.17'-W82°00.83'
 L-21-24, H-8

ORLANDO
 112.2 ORL
 Chan 59
 N28°32.56'-W81°20.10'
 L-21-23-24, H-8



SARASOTA
 117.0 SRQ
 Chan 117
 N27°24.42'-W82°33.82'
 L-21-23, H-8

CYPRESS
 108.6 CYY
 Chan 23
 N26°09.21'-W81°46.69'
 L-21-23, H-8

LEE COUNTY
 111.8 RSW
 Chan 55
 N26°31.79'-W81°46.55'
 L-21-23, H-8

TAKEOFF MINIMUMS

Rwys 4, 22: NA-ATC.
 Rwy 14: Standard.
 Rwy 32: Standard with ATC climb of 500' per NM to 540.
 Rwy 32: Turbojet aircraft do not turn prior to departure end of Rwy.

NOTE: RADAR required.

NOTE: Chart not scale.



DEPARTURE ROUTE DESCRIPTION

TAKEOFF RWY 14: Climb heading 139°. Expect RADAR vectors to join assigned route, thence. . . .

TAKEOFF RWY 32: Climbing left turn to intercept SRQ R-268 westbound or as assigned by ATC. Expect RADAR vectors to join assigned route, thence. . . .

. . . .maintain 3000 or as assigned by ATC. Expect clearance to filed altitude ten minutes after departure.

SE-3, 10 OCT 2019 to 07 NOV 2019

SE-3, 10 OCT 2019 to 07 NOV 2019

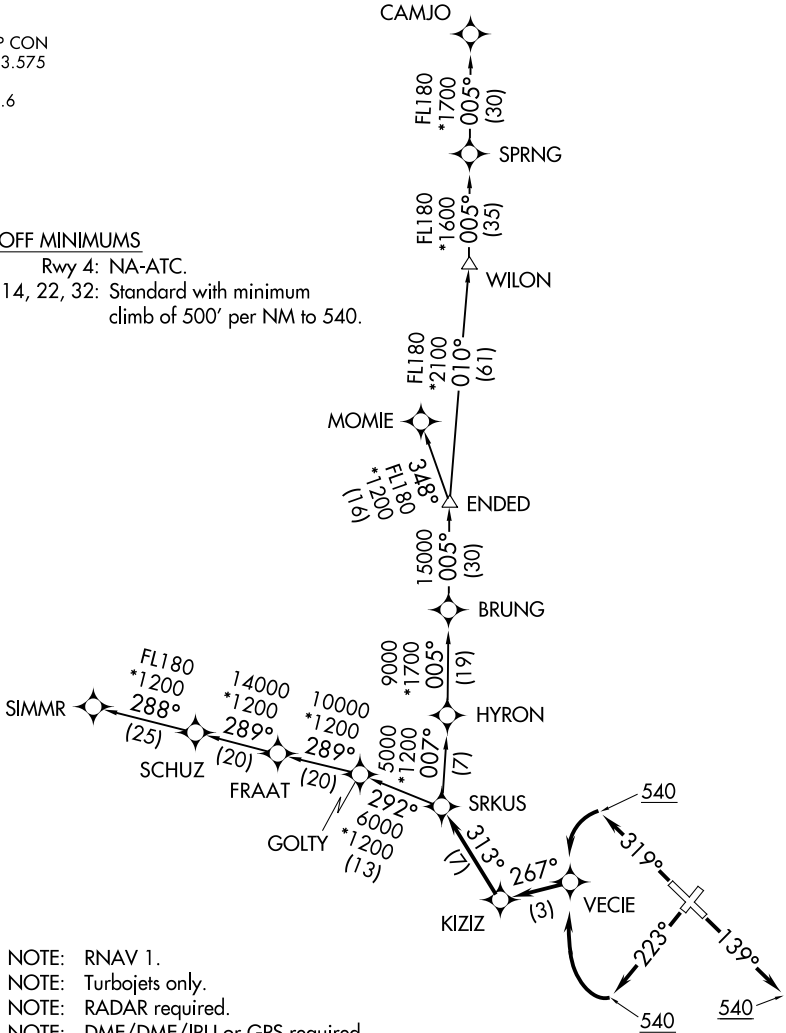
SRKUS FOUR DEPARTURE (RNAV)

SARASOTA/BRADENTON INTL ATIS
124.375
SARASOTA TOWER ★
120.1 (CTAF) 256.8
CLNC DEL
118.25
TAMPA DEP CON
119.65 353.575
GND CON
121.9 273.6

TAKEOFF MINIMUMS

Rwy 4: NA-ATC.

Rwys 14, 22, 32: Standard with minimum
climb of 500' per NM to 540.



- NOTE: RNAV 1.
- NOTE: Turbojets only.
- NOTE: RADAR required.
- NOTE: DME/DME/IRU or GPS required.

NOTE: Chart not to scale.

(NARRATIVE ON FOLLOWING PAGE)

SE-3, 10 OCT 2019 to 07 NOV 2019

SE-3, 10 OCT 2019 to 07 NOV 2019

SRKUS FOUR DEPARTURE (RNAV)



DEPARTURE ROUTE DESCRIPTION

TAKEOFF RWY 4: NA-ATC.

TAKEOFF RWY 14: Climb heading 139° or as assigned by ATC, to at or above 540, for vectors to KIZIZ, then on track 313° to SRKUS, thence. . . .

TAKEOFF RWY 22: Climb heading 223° to at or above 540, then right turn direct VECIE, then on track 267° to KIZIZ, then on track 313° to SRKUS, thence. . . .

TAKEOFF RWY 32: Climb heading 319° to at or above 540, then left turn direct VECIE, then on track 267° to KIZIZ, then on track 313° to SRKUS, thence. . . .

. . . .maintain 3000 or as assigned by ATC. Expect climb to filed altitude within ten minutes after departure.

CAMJO TRANSITION (SRKUS4.CAMJO)

MOMIE TRANSITION (SRKUS4.MOMIE)

SIMMR TRANSITION (SRKUS4.SIMMR)

SE-3, 10 OCT 2019 to 07 NOV 2019

SE-3, 10 OCT 2019 to 07 NOV 2019