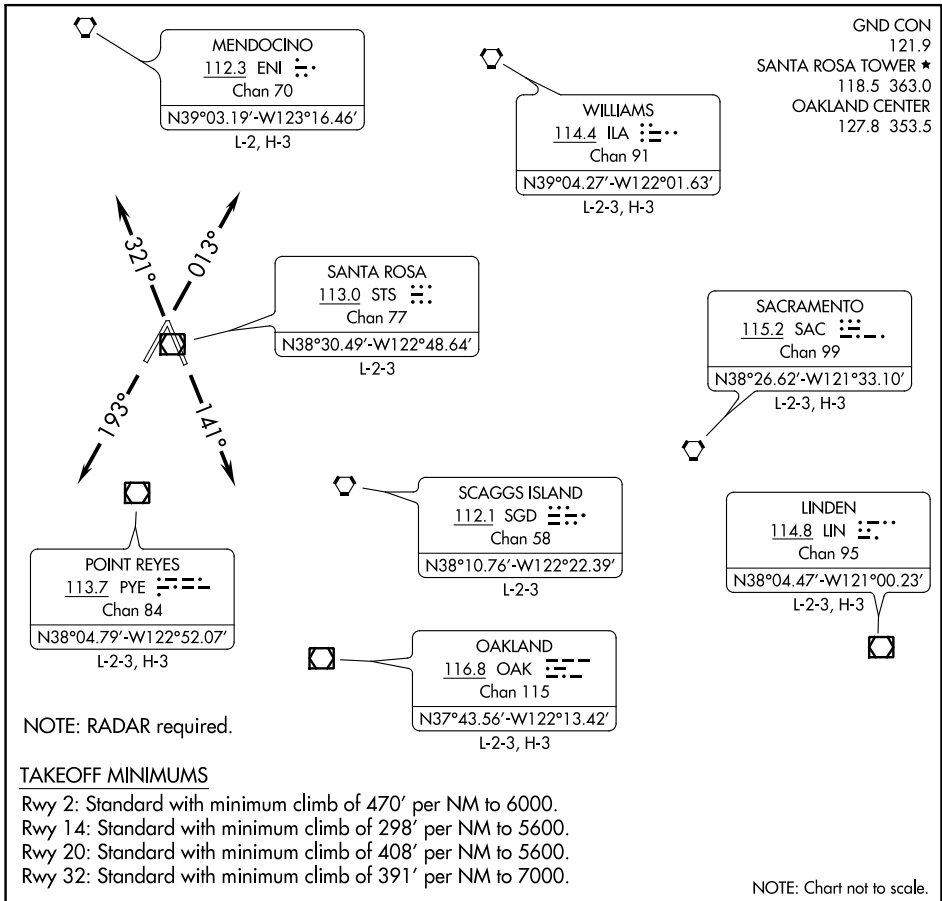


# CHARLIE FIVE DEPARTURE



SW-2, 25 FEB 2021 to 25 MAR 2021

SW-2, 25 FEB 2021 to 25 MAR 2021

## DEPARTURE ROUTE DESCRIPTION

**TAKEOFF RUNWAY 2:** Climb heading 013° (or assigned heading 295° CW 325° or 130° CW 190°), thence . . . .

**TAKEOFF RUNWAY 14:** Climb heading 141° (or assigned heading 295° CW 320° or 130° CW 220°), thence . . . .

**TAKEOFF RUNWAY 20:** Climb heading 193° (or assigned heading 295° CW 325° or 130° CW 220°), thence . . . .

**TAKEOFF RUNWAY 32:** Climb heading 321° (or assigned heading 295° CW 325° or 141° CW 220°), thence . . . .

. . . . expect RADAR vectors to join assigned route. Maintain assigned altitude; expect filed altitude/flight level ten minutes after departure.

**LOST COMMUNICATIONS:** If not in contact with Oakland Center after reaching 4000, proceed direct to the PYE VOR/DME. Thence via assigned route.

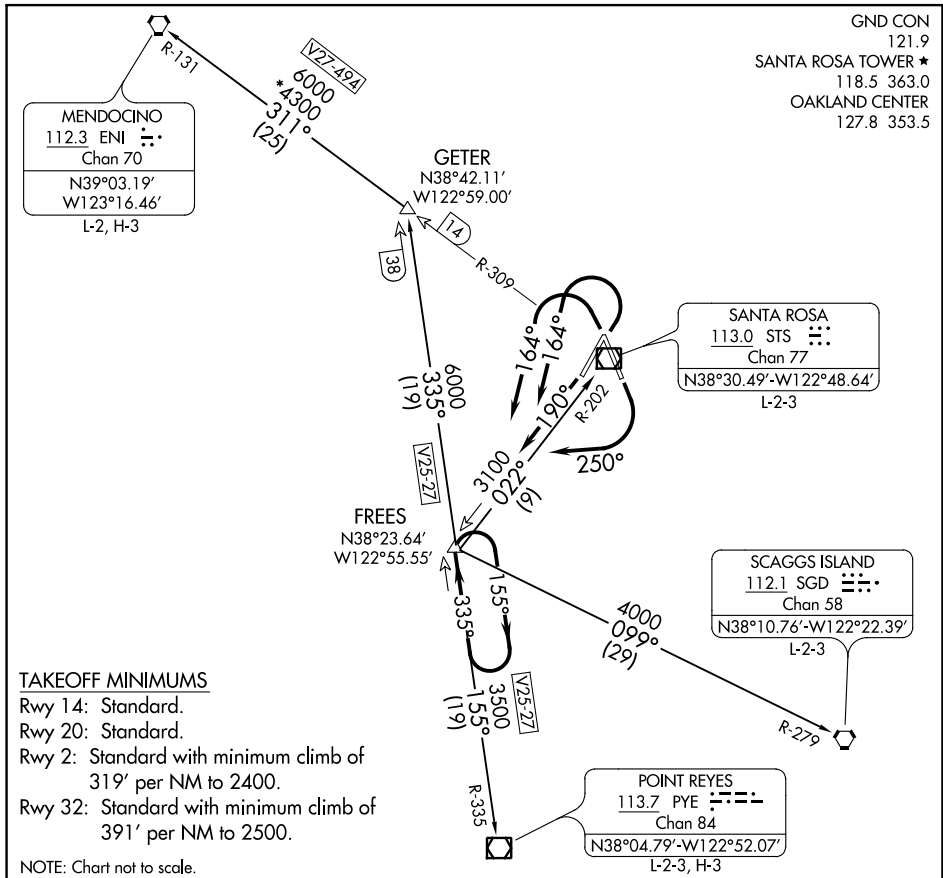
(FREES9.FREES) 17341

# FREES NINE DEPARTURE

CHARLES M SCHULZ-SONOMA COUNTY (STS)

AL-696 (FAA)

SANTA ROSA, CALIFORNIA



SW-2, 25 FEB 2021 to 25 MAR 2021

SW-2, 25 FEB 2021 to 25 MAR 2021



## DEPARTURE ROUTE DESCRIPTION

**TAKEOFF RUNWAYS 2, 32:** Climbing left turn heading 164°, thence . . . .

**TAKEOFF RUNWAY 14:** Climbing right turn heading 250°, thence . . . .

**TAKEOFF RUNWAY 20:** Climb on heading 190°, thence . . . .

. . . . intercept and climb on STS R-202 to cross FREES INT at or above MEA for route of flight, or continue climb in FREES holding pattern to MEA for route of flight then on (transition).

**MENDOCINO TRANSITION (FREES9.ENI):** From over FREES INT on PYE R-335 to GETER INT, then on ENI R-131 to ENI VORTAC.

**POINT REYES TRANSITION (FREES9.PYE):** From over FREES INT on PYE R-335 to PYE VOR/DME.

**SANTA ROSA TRANSITION (FREES9.STS):** From over FREES INT on STS R-202 to STS VOR/DME.

**SCAGGS ISLAND TRANSITION (FREES9.SGD):** From over FREES INT on SGD R-279 to SGD VORTAC.

# FREES NINE DEPARTURE

(FREES9.FREES) 15SEP16

SANTA ROSA, CALIFORNIA

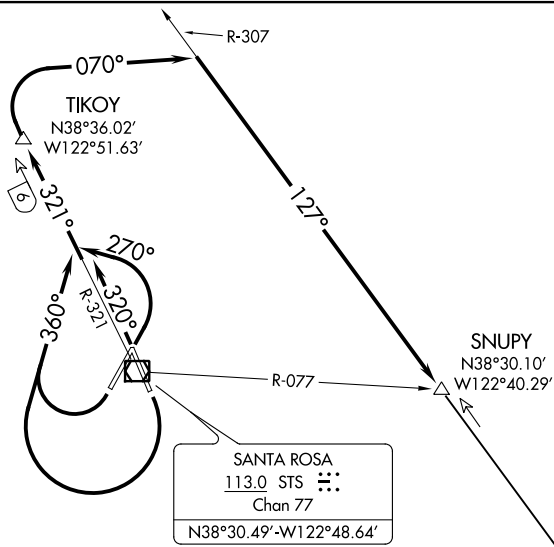
CHARLES M SCHULZ-SONOMA COUNTY (STS)

(STS8.SNUPY) 17341

# SANTA ROSA EIGHT DEPARTURE

CHARLES M SCHULZ-SONOMA COUNTY (STS)  
AL-696 (FAA) SANTA ROSA, CALIFORNIA

GND CON  
121.9  
SANTA ROSA TOWER ★  
118.5 363.0  
OAKLAND CENTER  
127.8 353.5



SANTA ROSA
113.0 STS
Chan 77
N38°30.49'-W122°48.64'

SCAGGS ISLAND
112.1 SGD
Chan 58
N38°10.76'-W122°22.39'
L-2-3

NOTE: DME required.

### TAKEOFF MINIMUMS

- Rwy 2: Standard with minimum climb of 281' per NM to 3900.
- Rwy 14: Standard with minimum climb of 298' per NM to 2400.
- Rwy 20: Standard with minimum climb of 408' per NM to 2800.
- Rwy 32: Standard with minimum climb of 281' per NM to 2700.

NOTE: Chart not to scale.

### DEPARTURE ROUTE DESCRIPTION

- TAKEOFF RUNWAY 2: Climbing left turn heading 270°, thence . . .
- TAKEOFF RUNWAYS 14 and 20: Climbing right turn heading 360°, thence . . .
- TAKEOFF RUNWAY 32: Climb on heading 320°, thence . . .

. . . intercept and climb on STS R-321 to TIKOY/6 DME, then turn right heading 070° to intercept SGD R-307 to SNUPY INT/SGD 24 DME, then on (transition).

SCAGGS ISLAND TRANSITION (STS8.SGD): From over SNUPY INT/SGD 24 DME on SGD R-307 to SGD VORTAC.

# SANTA ROSA EIGHT DEPARTURE

(STS8.SNUPY) 13NOV14

SANTA ROSA, CALIFORNIA  
CHARLES M SCHULZ-SONOMA COUNTY (STS)

SW-2, 25 FEB 2021 to 25 MAR 2021

SW-2, 25 FEB 2021 to 25 MAR 2021