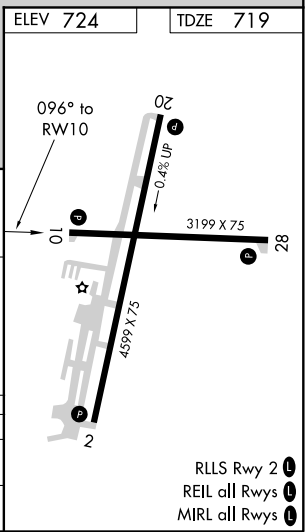
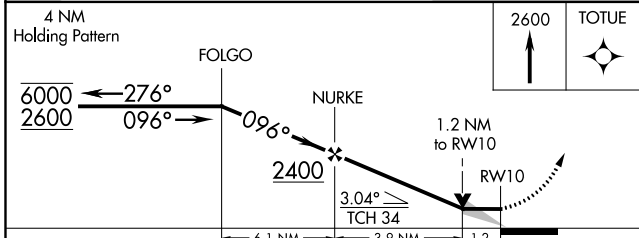
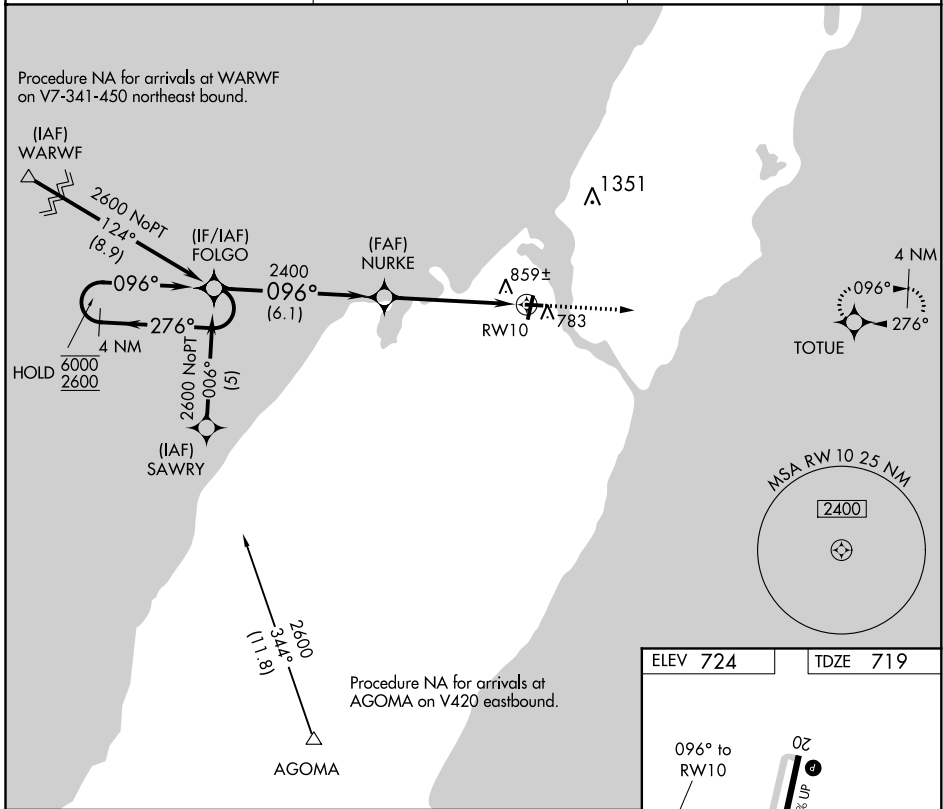


APP CRS	Rwy Idg	3199
096°	TDZE	719
	Apt Elev	724

RNAV (GPS) RWY 10

DOOR COUNTY CHERRYLAND (SUE)

RNP APCH.		MISSED APPROACH: Climb to 2600 direct TOTUE and hold.
AWOS-3PT 128.325	GREEN BAY APP CON ★ 119.25 338.2	UNICOM 122.7 (CTAF)



CATEGORY	A	B	C	D
LNVA MDA	1120-1 401 (400-1)		1120-1½ 401 (400-1½)	NA
CIRCLING	1280-1 556 (600-1)		1280-1½ 556 (600-1½)	NA

- RLS Rwy 2
- REIL all Rws
- MIRL all Rws

EC-3, 08 OCT 2020 to 05 NOV 2020

EC-3, 08 OCT 2020 to 05 NOV 2020

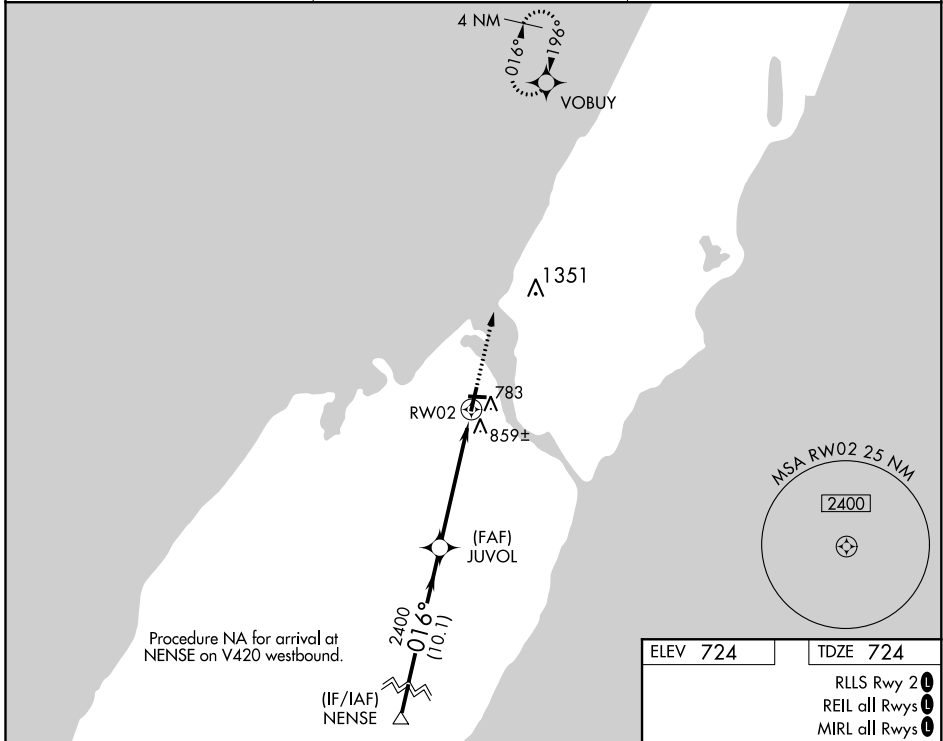
WAAS CH 81904 W02A	APP CRS 016°	Rwy Idg 4599 TDZE 724 Apt Elev 724
--	------------------------	---

RNAV (GPS) RWY 2

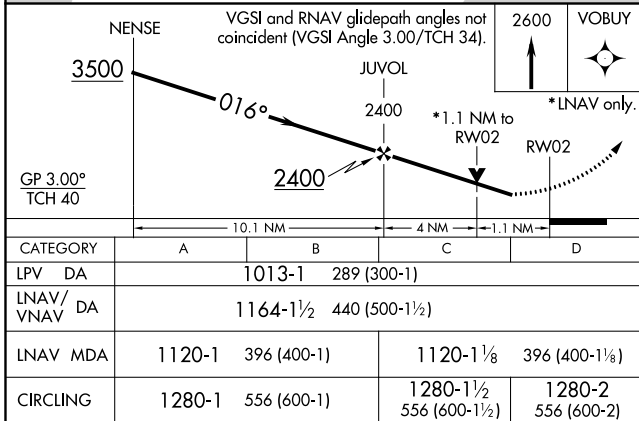
DOOR COUNTY CHERRYLAND (SUE)

RNP APCH.	<p>▼ Rwy 2 helicopter visibility reduction below 3/4 SM NA. For uncompensated Baro-VNAV systems, LNAV/VNAV NA below -16°C or above 54°C.</p> <p>▲</p>	MISSED APPROACH: Climb to 2600 direct VOBUY and hold.
-----------	---	---

AWOS-3PT 128.325	GREEN BAY APP CON * 119.25 338.2	UNICOM 122.7(CTAF) 0
----------------------------	--	--------------------------------



EC-3, 08 OCT 2020 to 05 NOV 2020



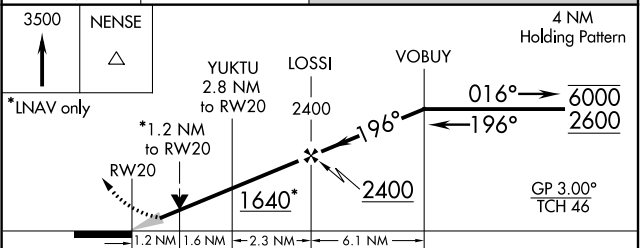
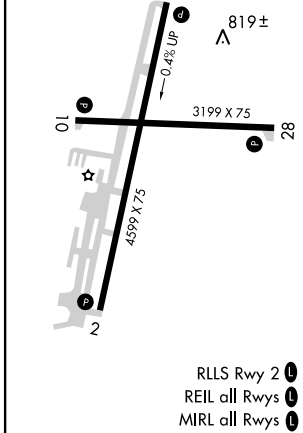
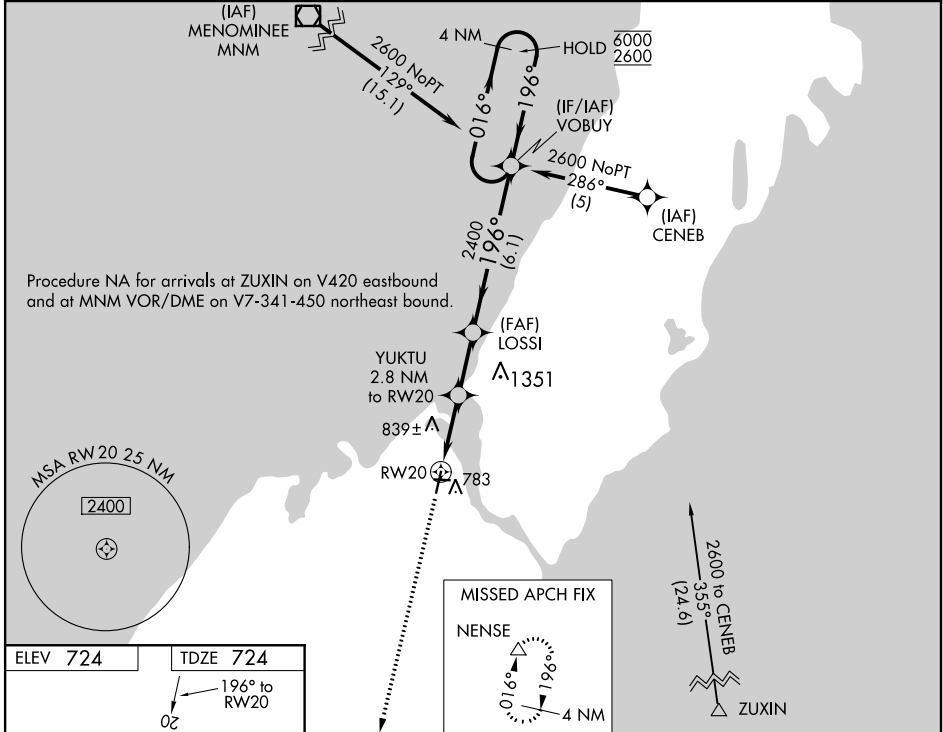
WAAS CH 86304 W20A	APP CRS 196°	Rwy Idg TDZE 724 Apt Elev 724	4599
--	------------------------	---	-------------

RNAV (GPS) RWY 20

DOOR COUNTY CHERRYLAND (SUE)

RNP APCH.	MISSED APPROACH: Climb to 3500 direct NENSE and hold.
<p>For uncompensated Baro-VNAV systems, LNAV/VNAV NA below -16°C or above 54°C.</p>	

AWOS-3PT 128.325	GREEN BAY APP CON ★ 119.25 338.2	UNICOM 122.7 (CTAF) 0
----------------------------	--	---------------------------------



CATEGORY	A	B	C	D
LPV DA		974-7/8	250 (300-7/8)	
LNAV/VNAV DA		1069-1/4	345 (400-1/4)	
LNAV MDA	1120-1	396 (400-1)	1120-1/8	396 (400-1/8)
CIRCLING	1280-1	556 (600-1)	1280-1/2	1280-2 556 (600-2)

EC-3, 08 OCT 2020 to 05 NOV 2020

EC-3, 08 OCT 2020 to 05 NOV 2020

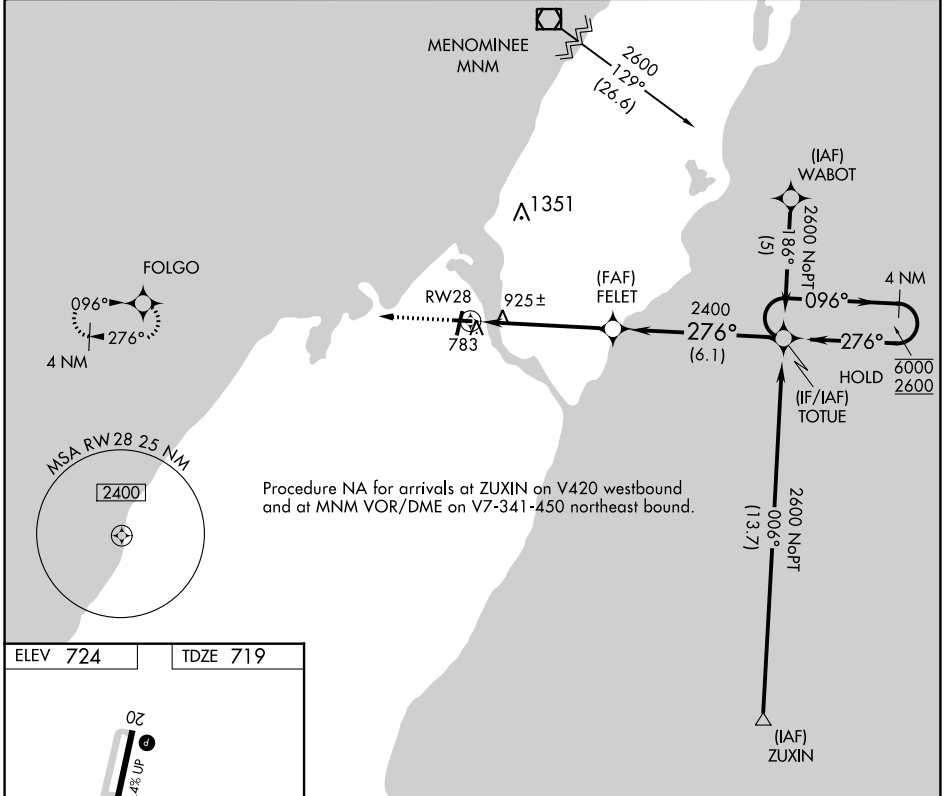
APP CRS	Rwy Idg	3199
276°	TDZE	719
	Apt Elev	724

RNAV (GPS) RWY 28

DOOR COUNTY CHERRYLAND (SUE)

RNP APCH.	MISSED APPROACH: Climb to 2600 direct FOLGO and hold.
Rwy 28 helicopter visibility reduction below 3/4 SM NA. 	

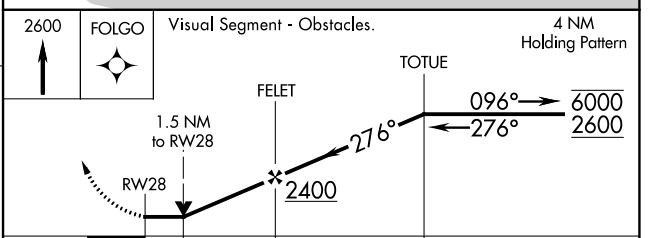
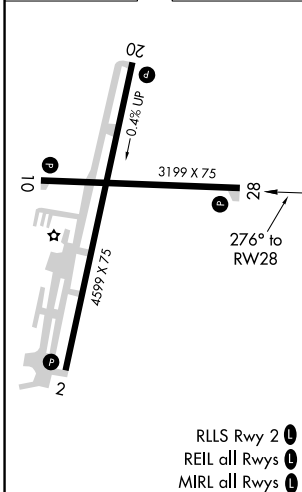
AWOS-3 128.325	GREEN BAY APP CON ★ 119.25 338.2	UNICOM 122.7 (CTAF)
--------------------------	--	-------------------------------



EC-3, 08 OCT 2020 to 05 NOV 2020

EC-3, 08 OCT 2020 to 05 NOV 2020

ELEV 724	TDZE 719
----------	----------



CATEGORY	A	B	C	D
LNAV MDA	1240-1	521 (600-1)	1240-1½ 521 (600-1½)	NA
CIRCLING	1280-1	556 (600-1)	1280-1½ 556 (600-1½)	NA

- RLLS Rwy 2
- REIL all Rws
- MIRL all Rws