

GATEWAY ONE DEPARTURE
(GATWY1.TWILA) 08NOV18

(GATWY1.TWILA) 24025
GATEWAY ONE DEPARTURE

AL-5400 (FAA)

SPIRIT OF ST LOUIS (STS)
ST. LOUIS, MISSOURI

**TOP ALTITUDE:
(JETS) 3000/
(PROPS) 2500**

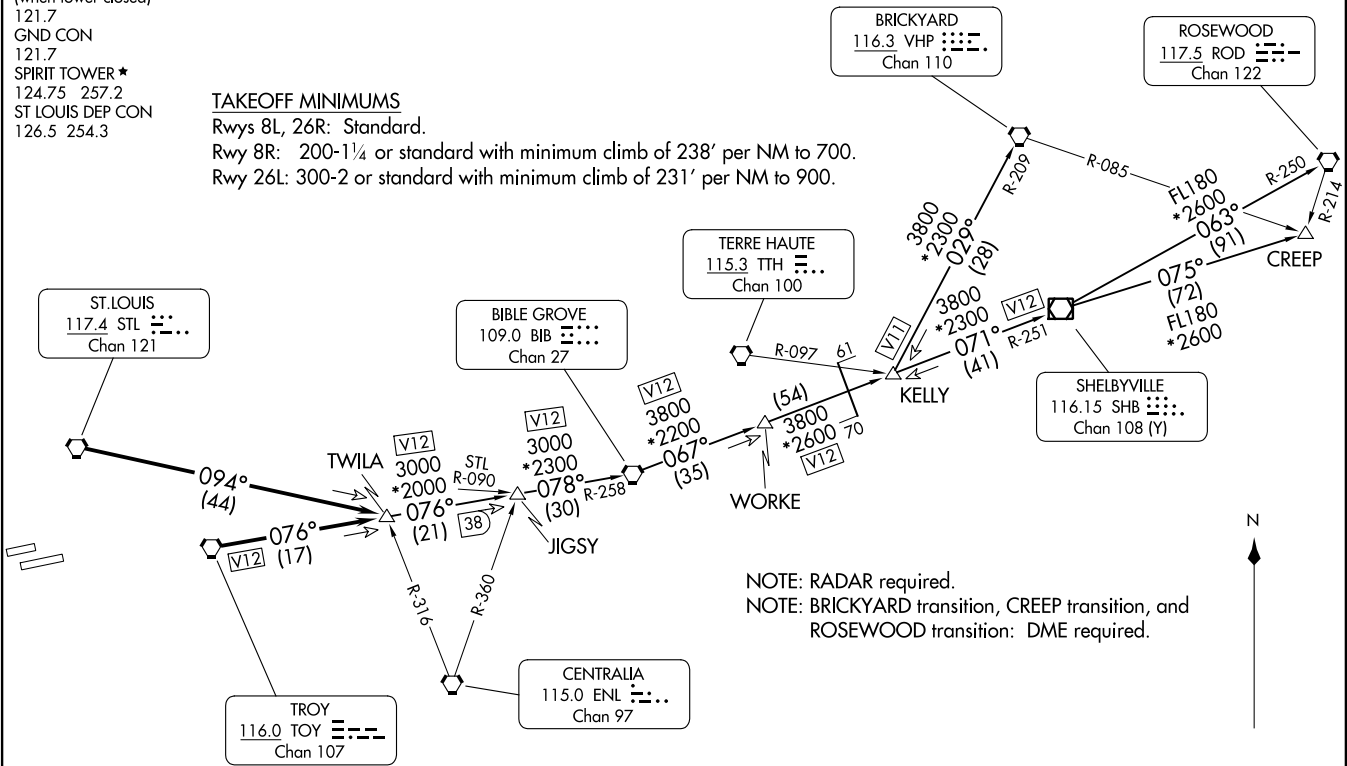
ATIS
134.8
CLNC DEL
133.1
ST LOUIS CLNC DEL
(when tower closed)
121.7
GND CON
121.7
SPIRIT TOWER*
124.75 257.2
ST LOUIS DEP CON
126.5 254.3

TAKEOFF MINIMUMS

Rwys 8L, 26R: Standard.

Rwy 8R: 200-1¼ or standard with minimum climb of 238' per NM to 700.

Rwy 26L: 300-2 or standard with minimum climb of 231' per NM to 900.



NOTE: RADAR required.
NOTE: BRICKYARD transition, CREEP transition, and ROSEWOOD transition: DME required.



(CONTINUED ON FOLLOWING PAGE)

NOTE: Chart not to scale.

ST. LOUIS, MISSOURI
SPIRIT OF ST LOUIS (STS)



DEPARTURE ROUTE DESCRIPTION

Climb on assigned heading for vector to appropriate route.

JETS: Maintain 3000 or assigned altitude, thence. . . .

PROPS: Maintain 2500 or assigned altitude, thence. . . .

. . . .from over TOY VORTAC on TOY R-076 or over STL VORTAC on STL R-094 to TWILA INT. Then on (transition), expect clearance to filed altitude 10 minutes after departure.

BIBLE GROVE TRANSITION (GATWY1.BIB): From over TWILA on TOY R-076 to JIGSY, then on BIB R-258 to BIB VORTAC.

BRICKYARD TRANSITION (GATWY1.VHP): From over TWILA on TOY R-076 to JIGSY, then on BIB R-258 to BIB VORTAC, then on BIB R-067 to WORKE, then on BIB R-067 and SHB R-251 to KELLY, then on VHP R-209 to VHP VORTAC.

CREEP TRANSITION (GATWY1.CREEP): From over TWILA on TOY R-076 to JIGSY, then on BIB R-258 to BIB VORTAC, then on BIB R-067 to WORKE, then on BIB R-067 and SHB R-251 to KELLY, then on SHB R-251 to SHB VOR/DME, then on SHB R-075 to CREEP.

JIGSY TRANSITION (GATWY1.JIGSY): From over TWILA on TOY R-076 to JIGSY.

ROSEWOOD TRANSITION (GATWY1.ROD): From over TWILA on TOY R-076 to JIGSY, then on BIB R-258 to BIB VORTAC, then on BIB R-067 to WORKE, then on BIB R-067 and SHB R-251 to KELLY, then on SHB R-251 to SHB VOR/DME, then on SHB R-063 and ROD R-250 to ROD VORTAC.

NC-3, 22 FEB 2024 to 21 MAR 2024

NC-3, 22 FEB 2024 to 21 MAR 2024

(LINDY8.STL) 24025

LINDBERGH EIGHT DEPARTURE

AL-5400 (FAA)

SPIRIT OF ST LOUIS (STLS)
ST. LOUIS, MISSOURI

ATIS
134.8
CLNC DEL
133.1
CLNC DEL
121.7 (when twr closed)
GND CON
121.7
SPIRIT TOWER ★
124.75 257.2
ST LOUIS DEP CON
126.5 254.3

**TOP ALTITUDE:
(JETS) 3000/(PROPS) 2500**

ST. LOUIS
117.4 STL
Chan 121

VICHY
117.7 VIH
Chan 124

FARMINGTON
115.7 FAM
Chan 104

LITTLE ROCK
113.9 LIT
Chan 86

WALNUT RIDGE
114.5 ARG
Chan 92

TAKEOFF MINIMUMS

Rwys 8L, 26R: Standard.

Rwy 8R: 200-1¼ or standard with minimum

climb of 238' per NM to 700.

Rwy 26L: 300-2 or standard with minimum

climb of 231' per NM to 900.

NOTE: DME and RADAR required.

(CONTINUED ON FOLLOWING PAGE)

NOTE: Chart not to scale.

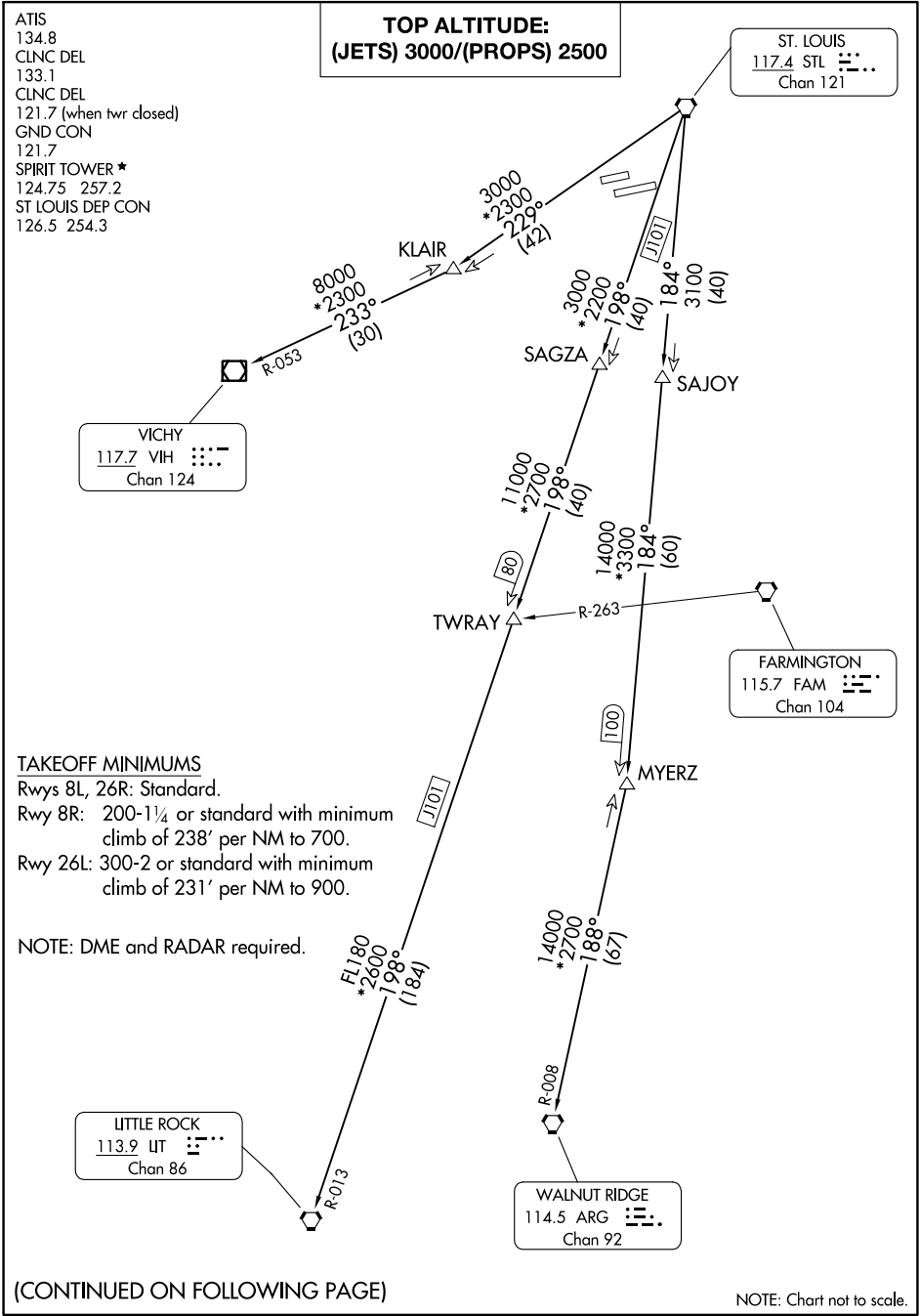
LINDBERGH EIGHT DEPARTURE

(LINDY8.STL) 17JUN21

ST. LOUIS, MISSOURI
SPIRIT OF ST LOUIS (STLS)

NC-3, 22 FEB 2024 to 21 MAR 2024

NC-3, 22 FEB 2024 to 21 MAR 2024





DEPARTURE ROUTE DESCRIPTION

Climb on assigned heading for vector to appropriate route.

JETS: Maintain 3000 or assigned altitude, thence

PROPS: Maintain 2500 or assigned altitude, thence

. . . . (transition). Expect filed altitude 10 minutes after departure.

LITTLE ROCK TRANSITION (LINDY8.LIT): From over STL VORTAC on STL R-198 to TWRAY, then on STL R-198 and LIT R-013 to LIT VORTAC.

MYERZ TRANSITION (LINDY8.MYERZ): From over STL VORTAC on STL R-184 to MYERZ.

VICHY TRANSITION (LINDY8.VIH): From over STL VORTAC on STL R-229 to KLAIR, then on VIH R-053 to VIH VOR/DME.

WALNUT RIDGE TRANSITION (LINDY8.ARG): From over STL VORTAC on STL R-184 to MYERZ, then on ARG R-008 to ARG VORTAC.

NC-3, 22 FEB 2024 to 21 MAR 2024

NC-3, 22 FEB 2024 to 21 MAR 2024

OZARK EIGHT DEPARTURE
(OZARK8.STU) 07OCT121

OZARK EIGHT DEPARTURE
(OZARK8.STU) 24025

AL-5400 (FAA)

ST. LOUIS, MISSOURI
SPIRIT OF ST. LOUIS (SUTS)
ST. LOUIS, MISSOURI

**TOP ALTITUDE:
(JETS) 3000/(PROPS) 2500**

- ATIS 134.8
- CLNC DEL 133.1
- ST LOUIS CLNC DEL (when tower closed) 121.7
- GND CON 121.7
- SPIRIT TOWER* 124.75 257.2
- ST LOUIS DEP CON 126.5 254.3



HALLSVILLE
114.2 HLV :D:D:D
Chan 89



R-095

V4

8000
*2500
281°
(46)



CABIT

8000
*2100
281°
(32)

V4

ST. LOUIS
117.4 STL :D:D:D
Chan 121



NOTE: DME and RADAR required.

DEPARTURE ROUTE DESCRIPTION

Climb on assigned heading for vector to appropriate route.

JETS: Maintain 3000 or assigned altitude, thence

PROPS: Maintain 2500 or assigned altitude, thence

. . . . (transition). Expect filed altitude 10 minutes after departure.

HALLSVILLE TRANSITION (OZARK8.HLV): From over STL VORTAC on STL R-281 to CABIT, then on STL R-281 and HLV R-095 to HLV VORTAC.

TAKEOFF MINIMUMS

- Rwys 8L, 26R: Standard.
- Rwy 8R: 200-1¼ or standard with minimum climb of 238' per NM to 700.
- Rwy 26L: 300-2 or standard with minimum climb of 231' per NM to 900.

NOTE: Chart not to scale.

ST. LOUIS, MISSOURI
SPIRIT OF ST. LOUIS (SUTS)

**TOP ALTITUDE:
(JETS) 3000/(PROPS) 2500**

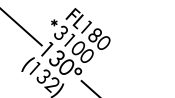
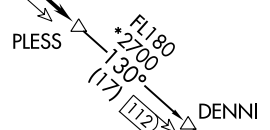
TAKEOFF MINIMUMS

Rwys 8L, 26R: Standard.
Rwy 8R: 200-1¼ or standard with minimum
climb of 238' per NM to 700.
Rwy 26L: 300-2 or standard with minimum
climb of 231' per NM to 900.

ST. LOUIS
117.4 STL
Chan 121

POCKET CITY
113.3 PXV
Chan 80

NASHVILLE
114.1 BNA
Chan 88



DEPARTURE ROUTE DESCRIPTION

Climb on assigned heading for vector to appropriate route.

JETS: Maintain 3000 or assigned altitude, thence. . . .

PROPS: Maintain 2500 or assigned altitude, thence. . . .

. . . . from over STL VORTAC on STL R-130 to PLESS, then on (transition) or (assigned route). Expect filed altitude 10 minutes after departure.

DENNI TRANSITION (PLESS5.DENNI): From over PLESS on STL R-130 to DENNI.

NASHVILLE TRANSITION (PLESS5.BNA): From over PLESS on STL R-130 to DENNI, then on STL R-130 and BNA R-315 to BNA VORTAC.

NOTE: Chart not to scale.

ATIS
134.8
CLNC DEL
133.1
ST LOUIS CLNC DEL
(when tower closed)
121.7
GND CON
121.7
SPIRIT TOWER *
124.75 257.2
ST LOUIS DEP CON
126.5 254.3

PLESS FIVE DEPARTURE
(PLESS5, PLESS) 17AUG17

(PLESS5, PLESS) 24025
PLESS FIVE DEPARTURE

AL-5400 (FAA)

SPIRIT OF ST LOUIS (SUTS)
ST. LOUIS, MISSOURI

ST. LOUIS, MISSOURI
SPIRIT OF ST LOUIS (SUTS)