

LOC/DME I-SVC 111.7 Chan 54	APP CRS 262°	Rwy Idg TDZE Apt Elev 6802 5380 5446
------------------------------------------	------------------------	--------------------------------------------------------------------------

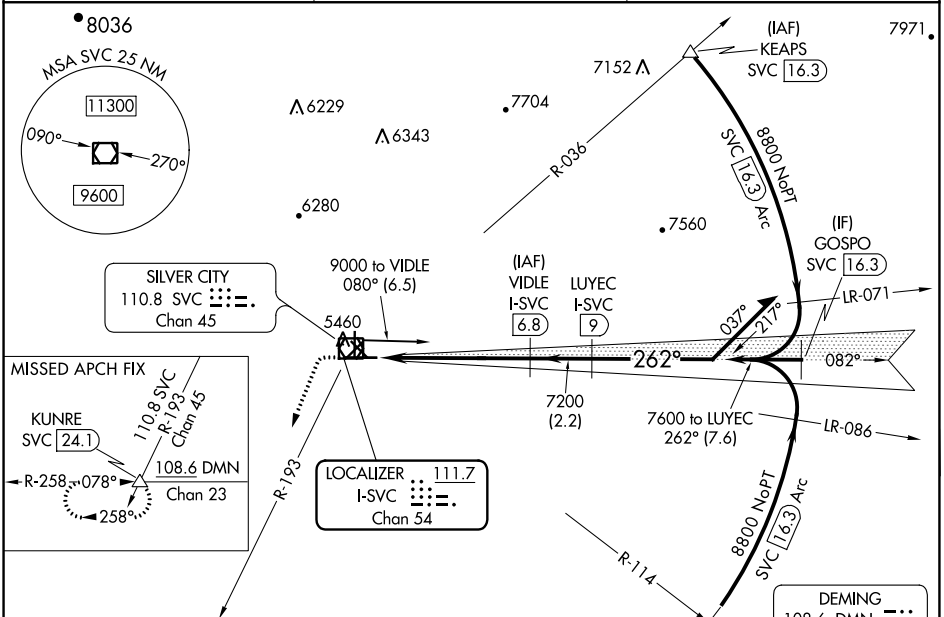
LOC RWY 26
GRANT COUNTY (SVC)

DME required.
NA Circling NA to Rwys 3, 12, 17, 21, 30 and 35.

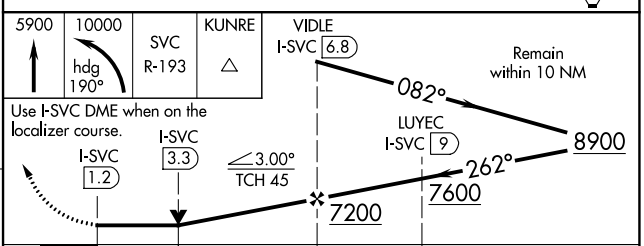
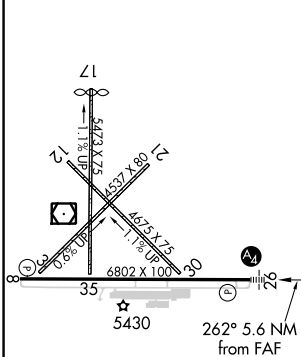


MISSED APPROACH: Climb to 5900 then climbing left turn to 10000 on heading 190° and SVC VOR/DME R-193 to KUNRE INT/SVC VOR/DME 24.1 DME and hold.

AWOS-3 126.725	ALBUQUERQUE CENTER 134.45 327.15	UNICOM 122.8 (CTAF) 0
--------------------------	--------------------------------------------	---------------------------------



ELEV 5446	TDZE 5380
-----------	-----------



CATEGORY	A	B	C	D
S-26	6100-¾ 720 (700-¾)		6100-1¾ 720 (700-1¾)	
C CIRCLING	6100-1 654 (700-1)		6100-2 6740-3 654 (700-2)	1294 (1300-3)

SW-1, 26 JAN 2023 to 23 FEB 2023

SW-1, 26 JAN 2023 to 23 FEB 2023

WAAS CH 87100 W26A	APP CRS 262°	Rwy Idg TDZE 5380 Apt Elev 5446
----------------------------------------	------------------------	-----------------------------------------------------

RNAV (GPS) RWY 26

GRANT COUNTY (SVC)

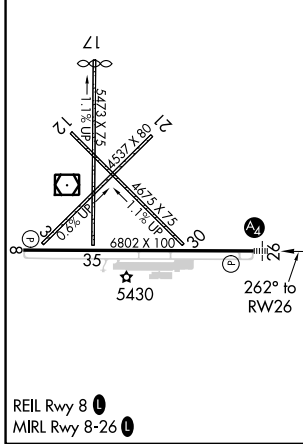
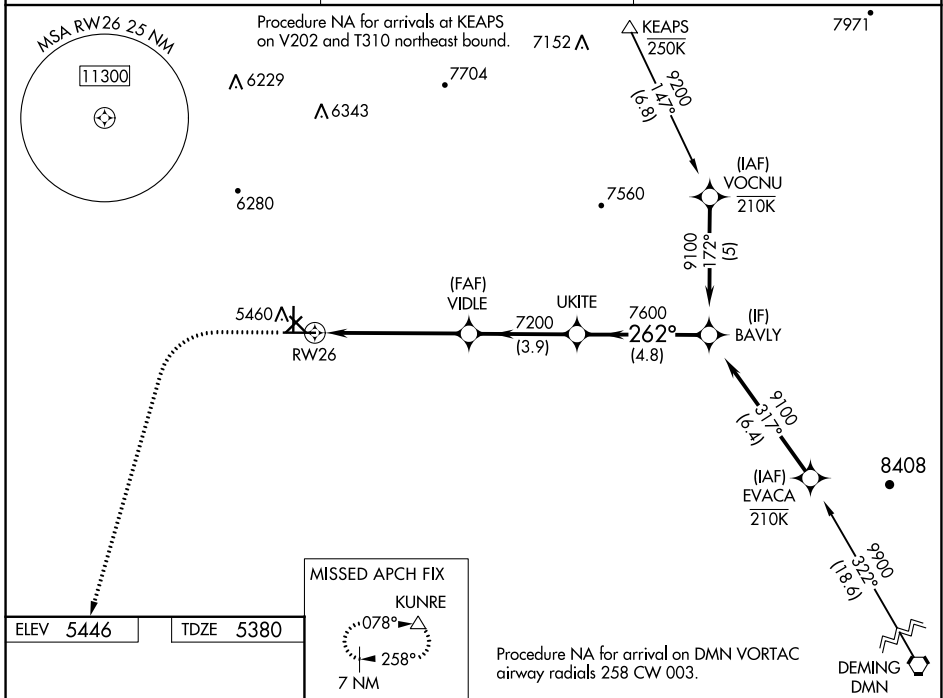
RNP APCH-GPS.

⚠ Circling NA to Rwys 3, 12, 17, 21, 30 and 35. Inop table does not apply to LPV and LNAV/VNAV. For uncompensated Baro-VNAV systems, LNAV/VNAV NA below -25°C or above 54°C.

MALS **A2**

MISSED APPROACH: Climb to 5900 then climbing left turn to 10000 direct KUNRE and hold.

AWOS-3 126.725	ALBUQUERQUE CENTER 134.45 327.15	UNICOM 122.8 (CTAF)
--------------------------	--------------------------------------------	-------------------------------



MISSED APCH FIX

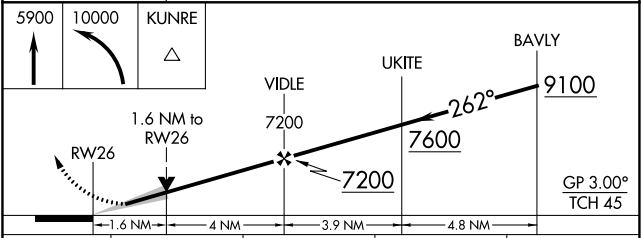
KUNRE

078°

258°

7 NM

Procedure NA for arrival on DMN VORTAC airway radials 258 CW 003.



CATEGORY	A	B	C	D
LPV DA		5630-3/4	250 (200-3/4)	
LNAV/VNAV DA		5630-3/4	250 (200-3/4)	
LNAV MDA	5940-3/4	560 (500-3/4)	5940-1 3/8	560 (500-1 1/8)
C CIRCLING	5940-1 494 (500-1)	5960-1 514 (600-1)	6100-1 3/4 654 (700-1 3/4)	6740-3 1294 (1300-3)

SW-1, 26 JAN 2023 to 23 FEB 2023

SW-1, 26 JAN 2023 to 23 FEB 2023

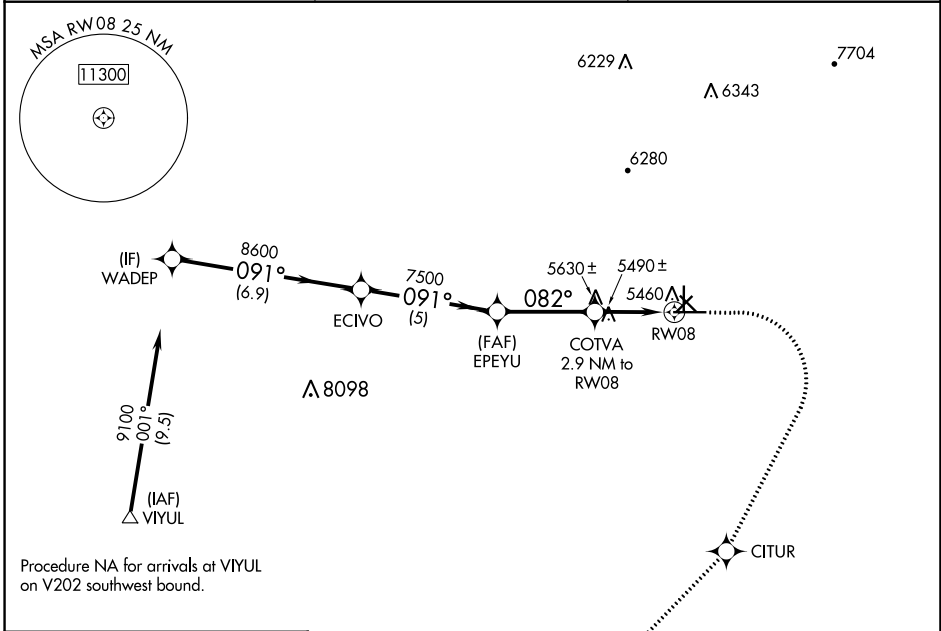
APP CRS	Rwy Idg	6802
082°	TDZE	5386
	Apt Elev	5446

RNAV (GPS) RWY 8

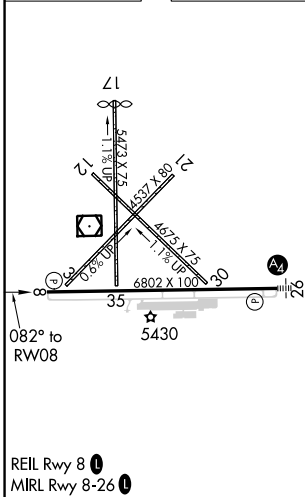
GRANT COUNTY (SVC)

RNP APCH-GPS.	MISSED APPROACH: Climb to 5900 then climbing right turn to 10000 direct CITUR and on track 216° to KUNRE and hold.
Rwy 8 helicopter visibility reduction below 3/4 SM NA.	

AWOS-3 126.725	ALBUQUERQUE CENTER 134.45 327.15	UNICOM 122.8 (CTAF) 1
--------------------------	--------------------------------------------	---------------------------------



ELEV 5446	TDZE 5386
-----------	-----------



MISSED APCH FIX

078° KUNRE

258°

7 NM

5900	10000	CITUR	tr 216°	KUNRE
9100	8600	7500	6360	
6.9 NM	5 NM	3.5 NM	1.9 NM	1 NM
CATEGORY	A	B	C	D
LNAV MDA	5740-1 354 (300-1)			

SW-1, 26 JAN 2023 to 23 FEB 2023

SW-1, 26 JAN 2023 to 23 FEB 2023

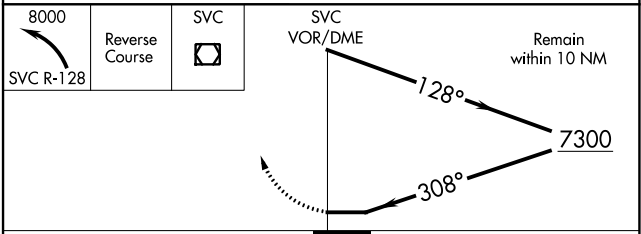
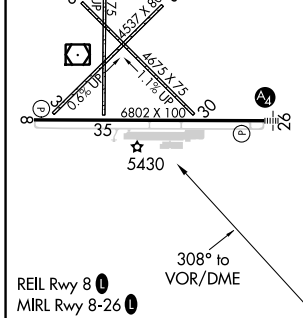
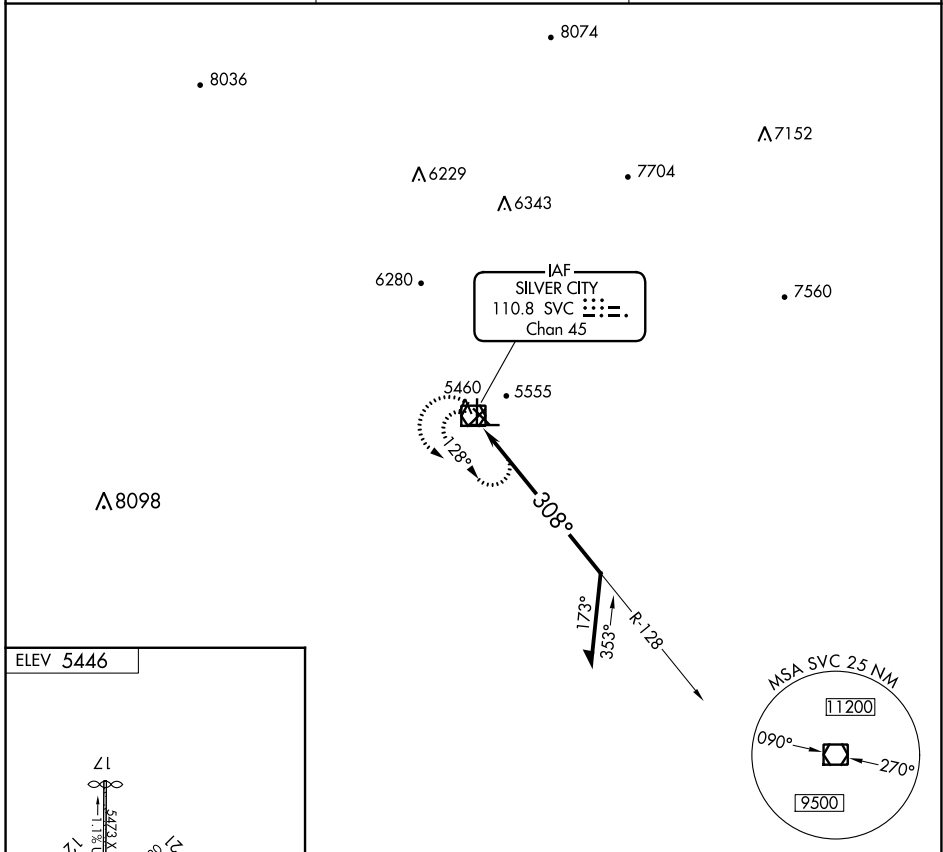
VOR/DME SVC 110.8 Chan 45	APP CRS 308°	Rwy Idg TDZE Apt Elev 5446	N/A N/A 5446
-----------------------------------------------	------------------------	--------------------------------------------	-----------------------------------------

VOR-A
GRANT COUNTY (SVC)

▼ When local altimeter setting not received, procedure NA. Circling to Rwy 3, 12, 17, 21, 30, 35 NA at night.

▲ MISSED APPROACH: Climbing left turn to 8000 via SVC R-128, then reverse course to SVC VOR/DME and hold.

AWOS-3 126.725	ALBUQUERQUE CENTER 134.45 327.15	UNICOM 122.8 (CTAF)
--------------------------	--------------------------------------------	-------------------------------



CATEGORY	A	B	C	D
CIRCLING	5940-1 494 (500-1)	5960-1 514 (600-1)	6100-1¾ 654 (700-1¾)	6740-3 1294 (1300-3)

SW-1, 26 JAN 2023 to 23 FEB 2023

SW-1, 26 JAN 2023 to 23 FEB 2023