

WAAS CH <b>49004</b> <b>W18A</b>	APP CRS <b>175°</b>	Rwy Idg <b>6610</b> TDZE <b>166</b> Apt Elev <b>166</b>
--	------------------------	---

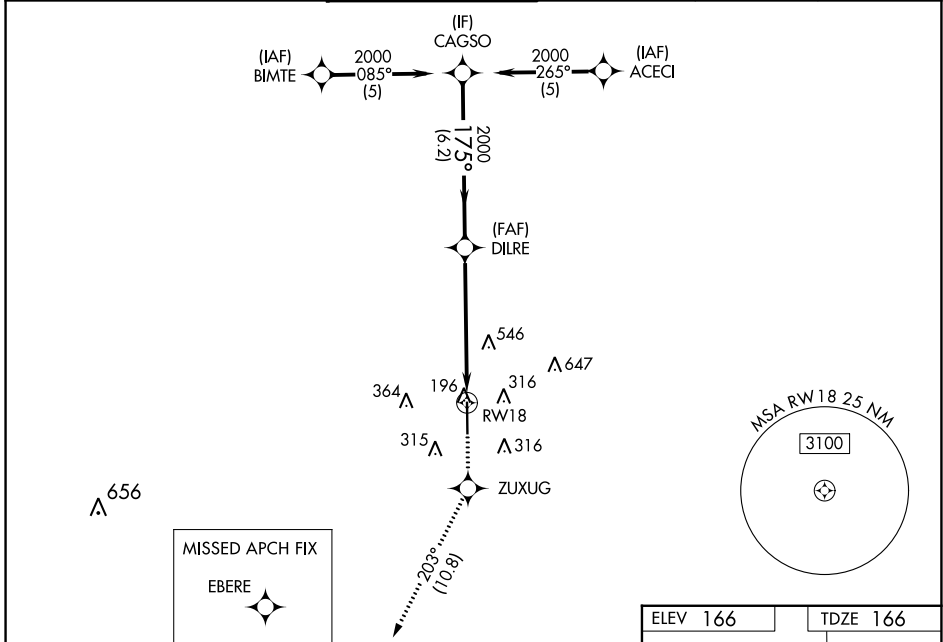
# RNAV (GPS) RWY 18

HOUSTON EXEC (TME)

**⚠** Baro-VNAV NA when using David Wayne Hooks Mem'l altimeter setting. For uncompensated Baro-VNAV systems, LNAV/VNAV NA below -15°C (5°F) or above 48°C (118°F). DME/DME RNP-0.3 NA. VDP NA when using David Wayne Hooks Mem'l altimeter setting. Helicopter visibility reduction below ¼ SM NA. When local altimeter setting not received, use David Wayne Hooks Mem'l altimeter setting and increase all DA 57 feet and all MDA 60 feet; increase LNAV/VNAV all Cats and LNAV Cat C/D visibility ½ mile, and Circling Cat C/D visibility ¼ mile.

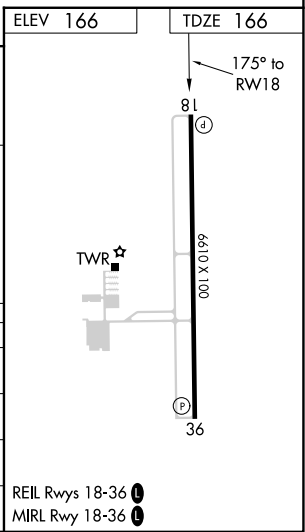
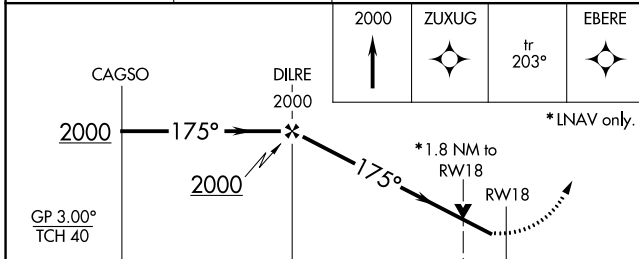
**MISSED APPROACH:** Climb to 2000 direct ZUXUG and on track 203° to EBERE and hold.

ATIS <b>119.525</b>	HOUSTON APP CON <b>123.8 257.7</b>	EXECUTIVE TOWER ★ <b>126.975</b> (CTAF) <b>0</b>	GND CON <b>132.075</b>	CLNC DEL <b>132.075</b>	UNICOM <b>122.975</b>
------------------------	---------------------------------------	---	---------------------------	----------------------------	--------------------------



SC-5, 22 FEB 2024 to 21 MAR 2024

SC-5, 22 FEB 2024 to 21 MAR 2024



CATEGORY	A	B	C	D
LPV DA	416-1 250 (300-1)			
LNAV/VNAV DA	708-2 542 (600-2)			
LNAV MDA	780-1 614 (700-1)	780-1¾ 614 (700-1¾)		
CIRCLING	820-1 654 (700-1)	860-2 694 (700-2)	1000-2¾ 834 (900-2¾)	

REIL Rwy 18-36 **0**  
MIRL Rwy 18-36 **0**

WAAS CH <b>97504</b> <b>W36A</b>	APP CRS <b>355°</b>	Rwy Idg <b>6610</b> TDZE <b>164</b> Apt Elev <b>166</b>
--	------------------------	---

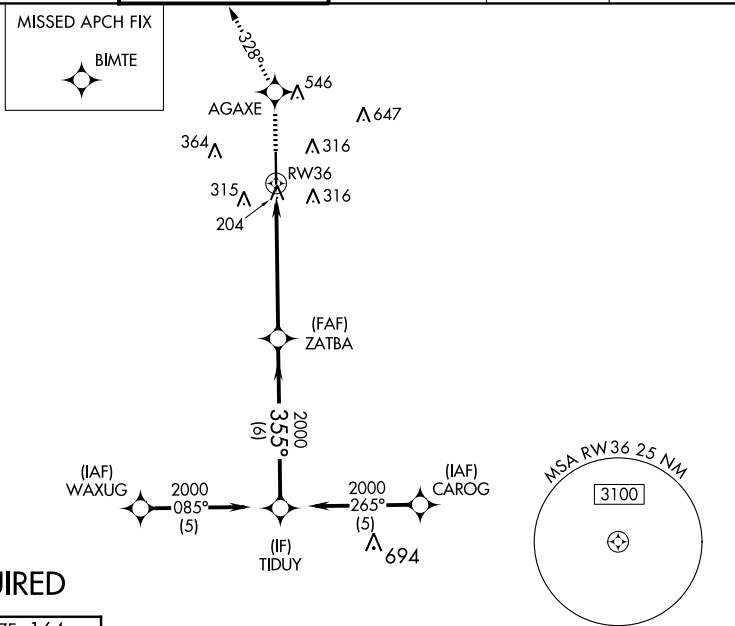
# RNAV (GPS) RWY 36

HOUSTON EXEC (TME)

**⚠** Baro-VNAV NA when using David Wayne Hooks Meml altimeter setting.  
 For uncompensated Baro-VNAV systems, LNAV/VNAV NA below -15°C (5°F) or above 48°C (118°F). DME/DME RNP-0.3 NA. VDP NA when using David Wayne Hooks Meml altimeter setting. When local altimeter setting not received, use David Wayne Hooks Meml altimeter setting and increase LPV DA to 471 feet, LNAV/VNAV DA to 719 feet; increase all MDA 60 feet. Increase LNAV/VNAV visibility ¼ mile all Cats and LNAV and circling Cat C/D ¼ mile.

**MISSED APPROACH:** Climb to 2000 direct AGAXE and via 328° track to BIMTE and hold.

ATIS <b>119.525</b>	HOUSTON APP CON <b>123.8 257.7</b>	EXECUTIVE TOWER ★ <b>126.975 (CTAF) 0</b>	GND CON <b>132.075</b>	CLNC DEL <b>132.075</b>	UNICOM <b>122.975</b>
------------------------	---------------------------------------	--	---------------------------	----------------------------	--------------------------



## RADAR REQUIRED

ELEV 166	TDZE 164
----------	----------

REIL Rwy 18-36 0

MIRL Rwy 18-36 0

355° to RW36

2000	AGAXE	328° tr	BIMTE	ZATBA	TIDUY
*INAV only.					Procedure Turn NA
					2000
					GP 3.00° TCH 40

CATEGORY	A	B	C	D
LPV DA	414-1 250 (300-1)			
LNAV/VNAV DA	662-1¾ 498 (500-1¾)			
LNAV MDA	620-1	456 (500-1)	620-1¼ 456 (500-1¼)	620-1½ 456 (500-1½)
CIRCLING	820-1	654 (700-1)	860-2 694 (700-2)	1000-2¾ 834 (900-2¾)

SC-5, 22 FEB 2024 to 21 MAR 2024

SC-5, 22 FEB 2024 to 21 MAR 2024