

| | | | |
|--|------------------------|-----------------------------|---|
| WAAS CH 97532 W16A | APP CRS 164° | Rwy Idg TDZE Apt Elev | 4500 1299 1304 |
|--|------------------------|-----------------------------|---|

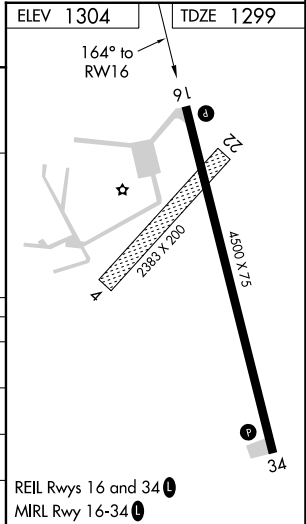
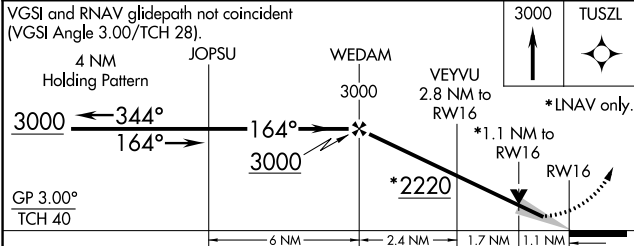
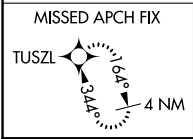
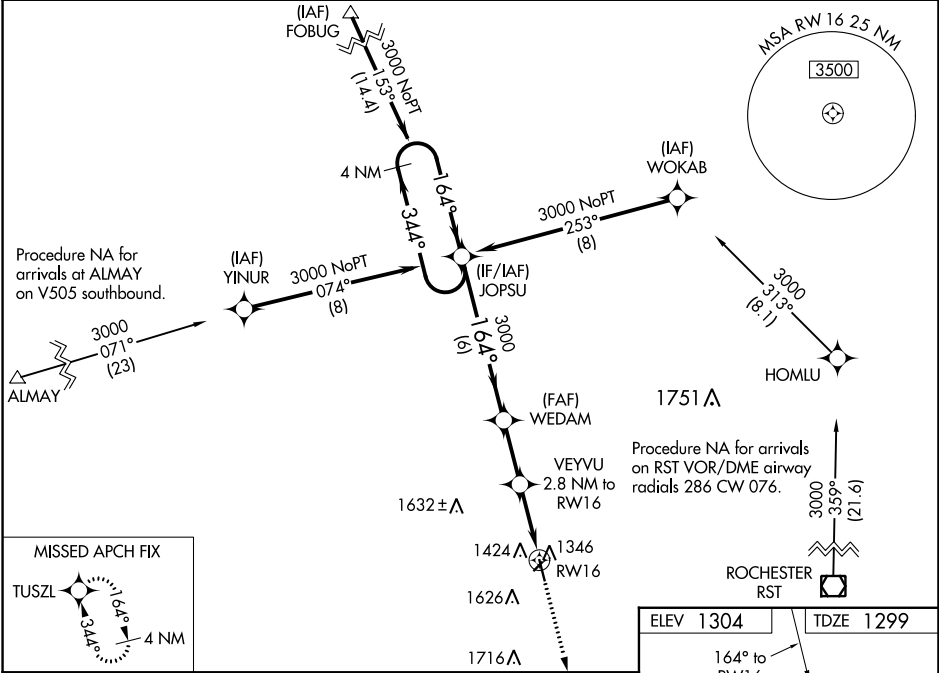
RNAV (GPS) RWY 16

DODGE CENTER (TOB)

⚠ For uncompensated Baro-VNAV systems, LNAV/VNAV NA below -17°C (2°F) or above 54°C (130°F). DME/DME RNP-0.3 NA. Baro-VNAV and VDP NA with Rochester Intl altimeter setting. When local altimeter setting not received, use Rochester Intl altimeter setting and increase all DA 39 feet and all MDA 40 feet, and increase LNAV/VNAV all Cats, LNAV Cat C visibility 1/8 mile, and Circling Cat C visibility 1/4 mile.

MISSED APPROACH: Climb to 3000 direct TUSZL and hold.

| | | |
|--------------------------|--|----------------------|
| AWOS-3 119.075 | ROCHESTER APP CON* 119.8 251.125 | CTAF 122.9 |
|--------------------------|--|----------------------|



| CATEGORY | A | B | C | D |
|--------------|--------------------|--------------------|------------------------|----|
| LPV DA | | 1549-1 250 (300-1) | | NA |
| LNAV/VNAV DA | | 1586-1 287 (300-1) | | NA |
| LNAV MDA | 1680-1 381 (400-1) | | 1680-1 381 (400-1 1/8) | NA |
| CIRCLING | 1960-1 656 (700-1) | | 1960-1 656 (700-1 3/4) | NA |

NC-1, 22 FEB 2024 to 21 MAR 2024

NC-1, 22 FEB 2024 to 21 MAR 2024

| | | | |
|--------------------------|-----------------|-----------------------------|----------------------|
| WAAS CH 45633 W34A | APP CRS 344° | Rwy Idg TDZE Apt Elev | 4500 1304 1304 |
|--------------------------|-----------------|-----------------------------|----------------------|

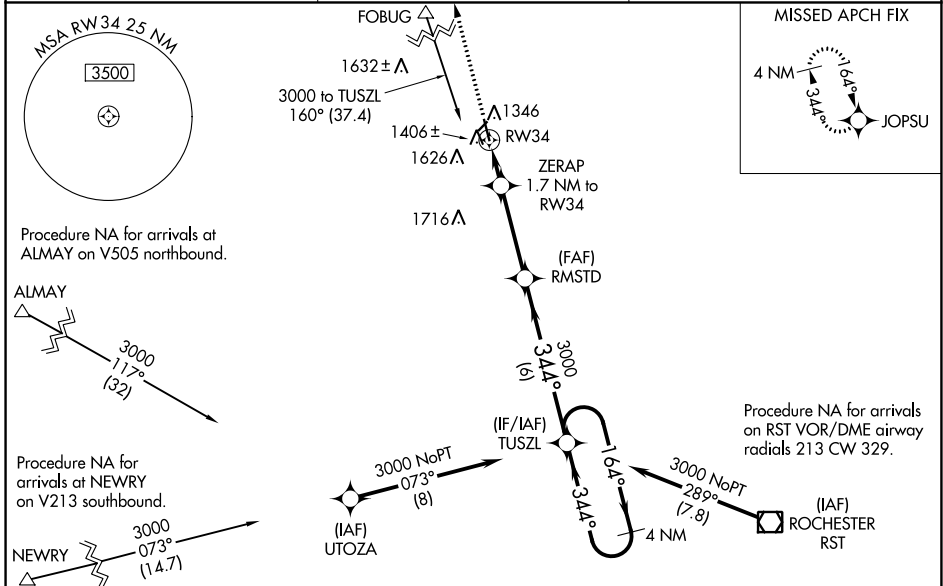
RNAV (GPS) RWY 34

DODGE CENTER (TOB)

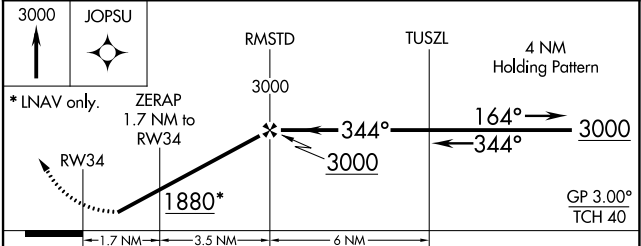
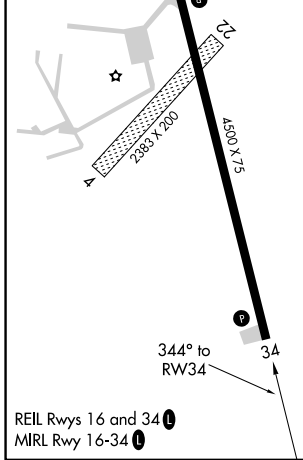
⚠ Baro-VNAV NA when using Rochester Intl altimeter setting. For uncompensated Baro-VNAV systems, LNAV/VNAV NA below -17°C (2°F) or above 54°C (130°F). DME/DME RNP-0.3 NA. When local altimeter setting not received, use Rochester Intl altimeter setting and increase all DA 39 feet and all MDA 40 feet, and increase LNAV Cat C visibility 1/8 mile and Circling Cat C visibility 1/4 mile. Rwy 34 Straight-in and Circling minimums NA at night.

MISSED APPROACH: Climb to 3000 direct JOPSU and hold.

| | | |
|--------------------------|---|----------------------|
| AWOS-3 119.075 | ROCHESTER APP CON * 119.8 251.125 | CTAF 122.9 |
|--------------------------|---|----------------------|



| | |
|-----------|-----------|
| ELEV 1304 | TDZE 1304 |
|-----------|-----------|



| CATEGORY | A | B | C | D |
|--|--------|-------------|-------------------------------|----|
| LPV DA | 1554-1 | 250 (300-1) | | NA |
| LNAV/VNAV DA | 1556-1 | 252 (300-1) | | NA |
| LNAV MDA | 1660-1 | 356 (400-1) | | NA |
| <input checked="" type="checkbox"/> CIRCLING | 1960-1 | 656 (700-1) | 1960-1 3/4 656 (700-1 3/4) | NA |

NC-1, 22 FEB 2024 to 21 MAR 2024

NC-1, 22 FEB 2024 to 21 MAR 2024

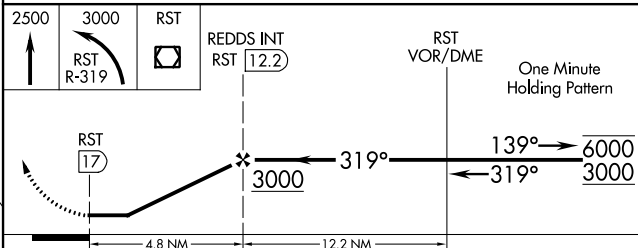
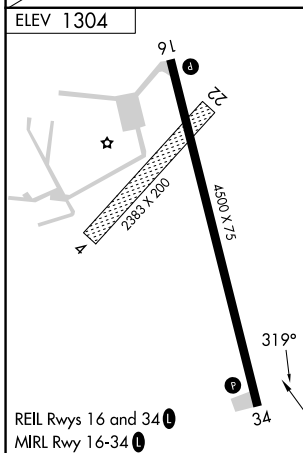
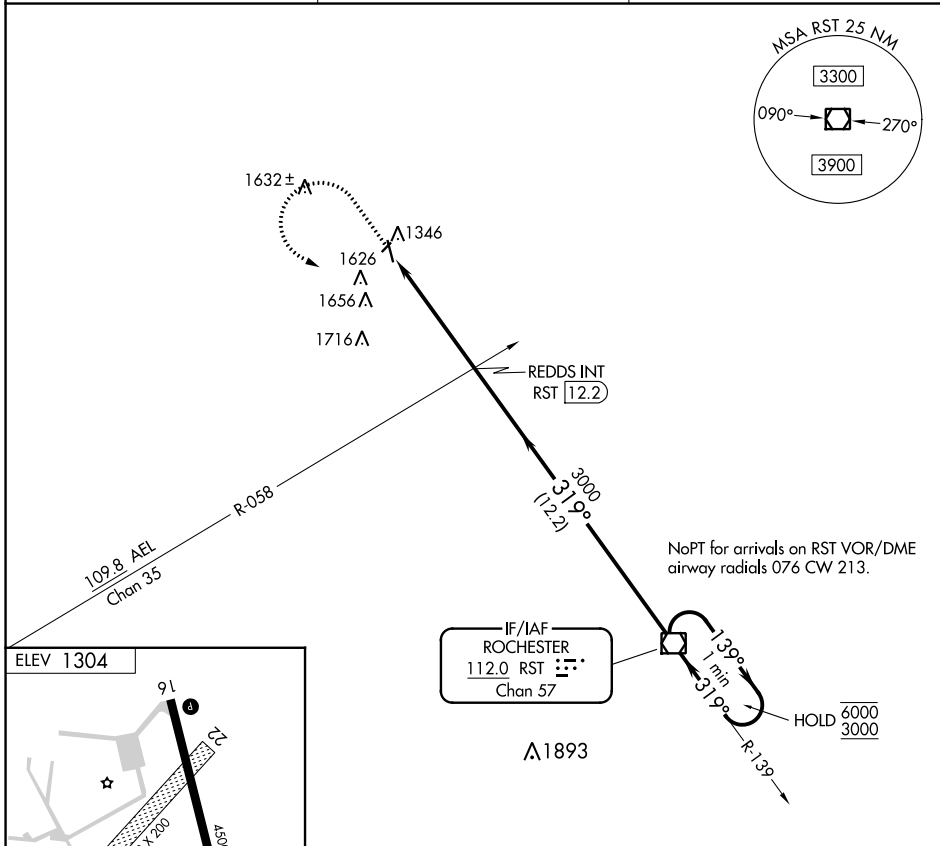
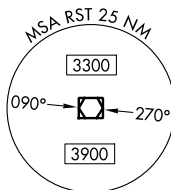
| | | |
|---|------------------------|--|
| VOR/DME RST 112.0 Chan 57 | APP CRS 319° | Rwy Idg TDZE Apt Elev N/A N/A 1304 |
|---|------------------------|--|

VOR-A
DODGE CENTER (TOB)

⚠ Circling NA to Rwy 4 and 22. When local altimeter setting not received, use Rochester altimeter setting and increase all MDAs 60 feet and visibility Cat C ¼ SM.

MISSED APPROACH: Climb to 2500 then climbing left turn to 3000 on RST VOR/DME R-319 to RST VOR/DME and hold.

| | | |
|--------------------------|---|----------------------|
| AWOS-3 119.075 | ROCHESTER APP CON * 119.8 251.125 | CTAF 122.9 |
|--------------------------|---|----------------------|



| | | | | | | |
|-------------------|--------|------|-------------|------|-------------------------|----|
| FAF to MAP 4.8 NM | | | | | | |
| Knots | 60 | 90 | 120 | 150 | 180 | |
| Min:Sec | 4:48 | 3:12 | 2:24 | 1:55 | 1:36 | |
| CATEGORY | A | | B | | C | D |
| CIRCLING | 1960-1 | | 656 (700-1) | | 1960-1¾ 656 (700-1¾) | NA |

NC-1, 22 FEB 2024 to 21 MAR 2024

NC-1, 22 FEB 2024 to 21 MAR 2024