

(DAWNN1.DAWNN) 23334  
**DAWNN ONE DEPARTURE**

AL-5438 (FAA)

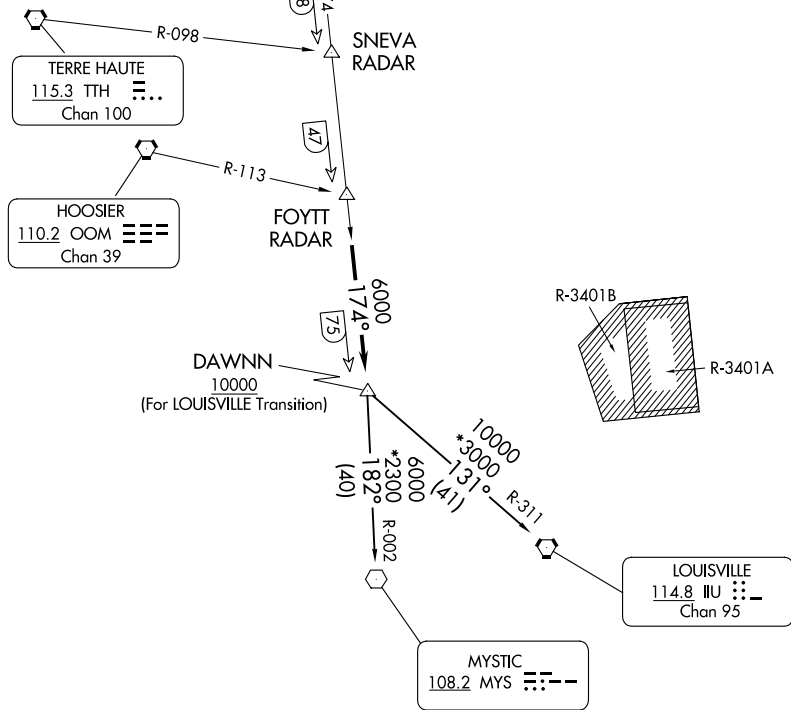
INDIANAPOLIS EXEC (TYQ)  
 INDIANAPOLIS, INDIANA

AWOS-3PT  
 120.725  
 INDIANAPOLIS DEP CON  
 124.65 127.15 317.8

BRICKYARD  
 116.3 VHP  
 Chan 110

**TOP ALTITUDE:  
 ASSIGNED BY ATC**

TAKEOFF MINIMUMS:  
 Rwy 18, 36: Standard.



- NOTE: RADAR required.
- NOTE: Select appropriate localizer/DME frequency/channel prior to departure.
- NOTE: Turbojets accelerate to 250K until reaching 10000, if unable advise ATC.
- NOTE: Assigned to aircraft with a requested altitude of 11000 or above.

(NARRATIVE ON FOLLOWING PAGE)

NOTE: Chart not to scale.

EC-2, 22 FEB 2024 to 21 MAR 2024

EC-2, 22 FEB 2024 to 21 MAR 2024

**DAWNN ONE DEPARTURE**  
 (DAWNN1.DAWNN) 07DEC17

INDIANAPOLIS, INDIANA  
 INDIANAPOLIS EXEC (TYQ)



DEPARTURE ROUTE DESCRIPTION

DEPARTING ALL OTHER AUTHORIZED RUNWAYS/AIRPORTS: Climb on assigned heading to assigned altitude. Thence....

....on RADAR vectors to join VHP R-174 to DAWNN INT then on transition or assigned route. Expect clearance to requested altitude ten minutes after departure.

LOUISVILLE TRANSITION (DAWNN1.IIU): From over DAWNN INT on IIU R-311 to IIU VORTAC.

MYSTIC TRANSITION (DAWNN1.MYS): From over DAWNN INT on MYS R-002 to MYS VOR.

EC-2, 22 FEB 2024 to 21 MAR 2024

EC-2, 22 FEB 2024 to 21 MAR 2024

(OOM5.OOM) 23334  
HOOSIER FIVE DEPARTURE

AL-5438 (FAA)

INDIANAPOLIS EXEC (TYQ)  
INDIANAPOLIS, INDIANA

AWOS-3PT  
120.725  
INDIANAPOLIS DEP CON  
124.65 127.15 317.8

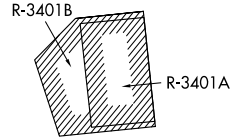
**TOP ALTITUDE:  
ASSIGNED BY ATC**

BRICKYARD  
116.3 VHP [Morse code]  
Chan 110

HOOSIER  
110.2 OOM [Morse code]  
Chan 39

POCKET CITY  
113.3 PXV [Morse code]  
Chan 80

TAKEOFF MINIMUMS:  
Rwys 18, 36: Standard.



DEPARTURE ROUTE DESCRIPTION

DEPARTING ALL OTHER AUTHORIZED RUNWAYS: Climb on assigned heading to assigned altitude. Thence....

....expect RADAR vectors to join VHP R-195 to OOM VORTAC then via transition or assigned route. Expect clearance to requested altitude ten minutes after departure.

POCKET CITY TRANSITION (OOM5.PXV): From over OOM VORTAC via OOM R-207 to WEGEE, then via PXV R-043 to PXV VORTAC.

- NOTE: RADAR required.
- NOTE: Select appropriate localizer/DME frequency/channel prior to departure.
- NOTE: Turbojets accelerate to 250K until reaching 10000, if unable advise ATC.
- NOTE: Assigned to aircraft with a requested altitude of 11000 or above.

NOTE: Chart not to scale.

EC-2, 22 FEB 2024 to 21 MAR 2024

EC-2, 22 FEB 2024 to 21 MAR 2024

HOOSIER FIVE DEPARTURE  
(OOM5.OOM) 01FEB18

INDIANAPOLIS, INDIANA  
INDIANAPOLIS EXEC (TYQ)

(MAREO5.MAREO) 23334  
**MAREO FIVE DEPARTURE**

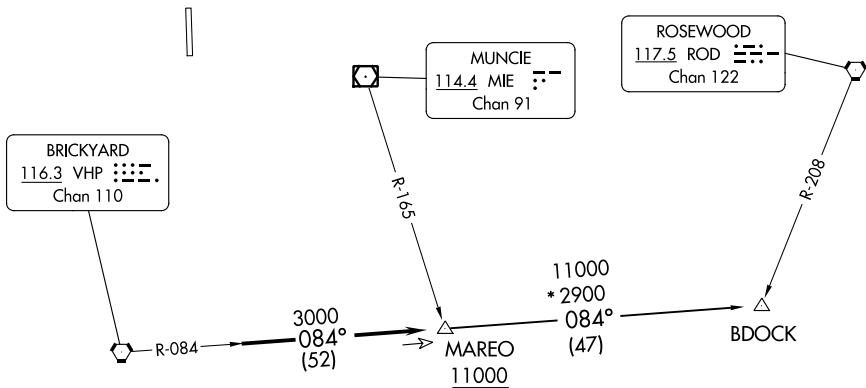
AL-5438 (FAA)

INDIANAPOLIS EXEC (TYQ)  
 INDIANAPOLIS, INDIANA

AWOS-3PT  
 120.725  
 INDIANAPOLIS DEP CON  
 124.65 127.15 317.8

**TOP ALTITUDE:  
 ASSIGNED BY ATC**

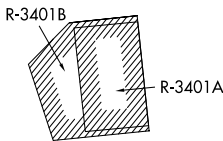
**TAKEOFF MINIMUMS**  
 Rwy 18, 36: Standard.



EC-2, 22 FEB 2024 to 21 MAR 2024

EC-2, 22 FEB 2024 to 21 MAR 2024

- NOTE: RADAR required.
- NOTE: Select appropriate localizer/DME frequency/channel prior to departure.
- NOTE: Turbojets accelerate to 250K until reaching 10000, if unable advise ATC.
- NOTE: Assigned to aircraft with a requested altitude of 11000 or above.



NOTE: Chart not to scale.



**DEPARTURE ROUTE DESCRIPTION**

DEPARTING ALL OTHER AUTHORIZED RUNWAYS: Climb on assigned heading to assigned altitude. Thence....

....expect RADAR vectors to join VHP R-084 to MAREO INT then via transition or assigned route. Expect clearance to requested altitude ten minutes after departure.

BDOCK TRANSITION (MAREO5.BDOCK): From over MAREO INT via VHP R-084 to BDOCK INT.

**MAREO FIVE DEPARTURE**  
 (MAREO5.MAREO) 01FEB18

INDIANAPOLIS, INDIANA  
 INDIANAPOLIS EXEC (TYQ)

(MEARZ7.MEARZ) 23334

AL-5438 (FAA)

INDIANAPOLIS EXEC (TYQ)  
INDIANAPOLIS, INDIANA

# MEARZ SEVEN DEPARTURE

**TOP ALTITUDE:  
ASSIGNED BY ATC**

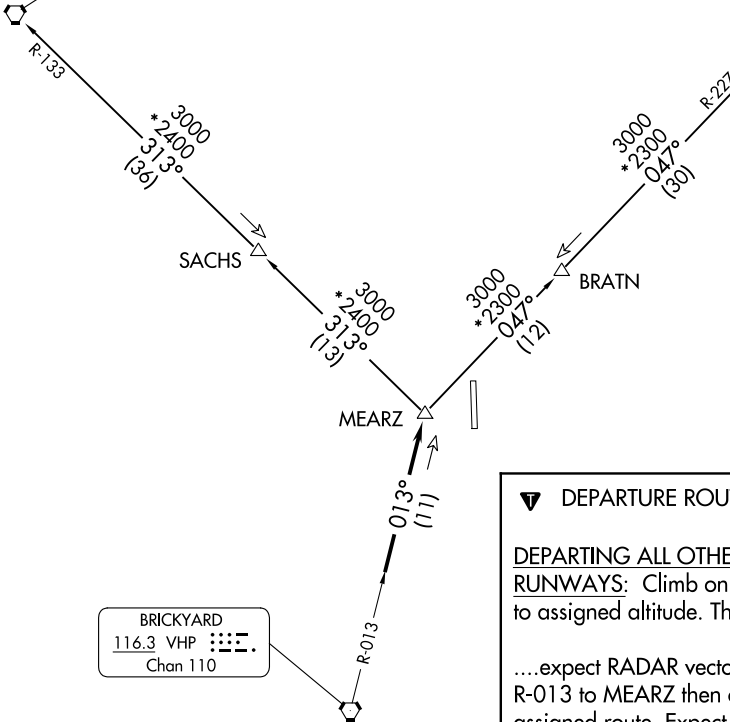
RADAR required.

AWOS-3PT  
120.725  
INDIANAPOLIS DEP CON  
124.65 127.15 317.8

BOILER  
115.1 BVT  
Chan 98

MARION  
108.6 MZZ  
Chan 23

BRICKYARD  
116.3 VHP  
Chan 110



**DEPARTURE ROUTE DESCRIPTION**

DEPARTING ALL OTHER AUTHORIZED RUNWAYS: Climb on assigned heading to assigned altitude. Thence....

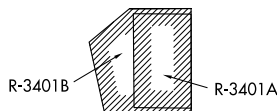
....expect RADAR vectors to join VHP R-013 to MEARZ then on transition or assigned route. Expect clearance to requested altitude ten minutes after departure.

BOILER TRANSITION (MEARZ7.BVT):  
From over MEARZ on BVT R-133 to BVT VORTAC.

MARION TRANSITION (MEARZ7.MZZ):  
From over MEARZ on MZZ R-227 to MZZ VOR/DME.

TAKEOFF MINIMUMS  
Rwy 18, 36: Standard.

- NOTE: Turbojets accelerate to 250K until reaching 10000, if unable advise ATC.
- NOTE: Assigned to aircraft with a requested altitude of 11000 or above.
- NOTE: Select appropriate localizer/DME frequency/channel prior to departure.



NOTE: Chart not to scale.

EC-2, 22 FEB 2024 to 21 MAR 2024

EC-2, 22 FEB 2024 to 21 MAR 2024

MEARZ SEVEN DEPARTURE  
(MEARZ7.MEARZ) 19MAY22

INDIANAPOLIS, INDIANA  
INDIANAPOLIS EXEC (TYQ)


**(ROCKY1.ROCKY) 23334**  
**ROCKY ONE DEPARTURE**

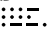
AL-5438 (FAA)

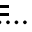
INDIANAPOLIS EXEC (TYQ)  
 INDIANAPOLIS, INDIANA

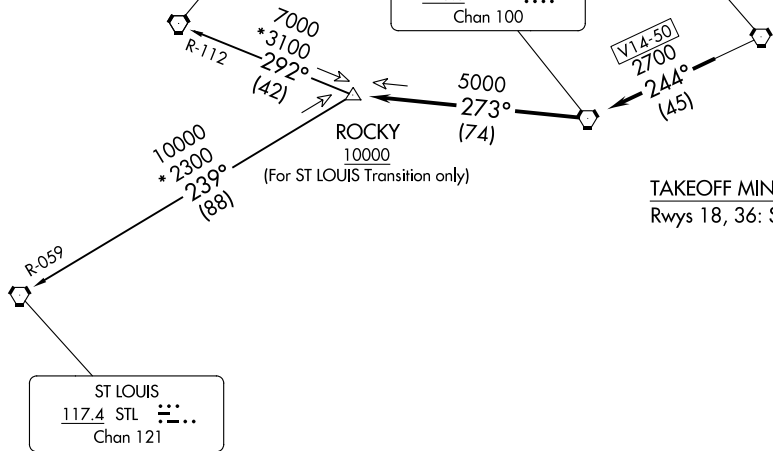
AWOS-3PT  
 120.725  
 INDIANAPOLIS DEP CON  
 124.65 127.15 317.8

**TOP ALTITUDE:  
 ASSIGNED BY ATC**

SPINNER  
112.7 SPI   
 Chan 74

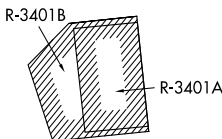
BRICKYARD  
116.3 VHP   
 Chan 110

TERRE HAUTE  
115.3 TTH   
 Chan 100



TAKEOFF MINIMUMS  
 Rwy's 18, 36: Standard.

- NOTE: RADAR required.
- NOTE: Select appropriate localizer/DME frequency/channel prior to departure.
- NOTE: Turbojets accelerate to 250K until reaching 10000, if unable advise ATC.
- NOTE: Assigned to aircraft with a requested altitude of 11000 or above.



NOTE: Chart not to scale.

**DEPARTURE ROUTE DESCRIPTION**

DEPARTING ALL OTHER AUTHORIZED RUNWAYS: Climb on assigned heading to assigned altitude. Thence . . . .

. . . . expect RADAR vectors to join VHP R-244 to TTH VORTAC, then via TTH R-273 to ROCKY INT then via transition or assigned route. Expect clearance to requested altitude ten minutes after departure.

SPINNER TRANSITION (ROCKY1.SPI): From over ROCKY INT on SPI R-112 to SPI VORTAC.  
ST LOUIS TRANSITION (ROCKY1.STL): From over ROCKY INT on STL R-059 to STL VORTAC.

**ROCKY ONE DEPARTURE**  
**(ROCKY1.ROCKY) 01FEB18**

INDIANAPOLIS, INDIANA  
 INDIANAPOLIS EXEC (TYQ)

EC-2, 22 FEB 2024 to 21 MAR 2024

EC-2, 22 FEB 2024 to 21 MAR 2024