

APP CRS	Rwy Idg	5002
102°	TDZE	73
	Apt Elev	73

RNAV (GPS) RWY 10

BERMUDA DUNES (UDD)

RNP APCH - GPS.

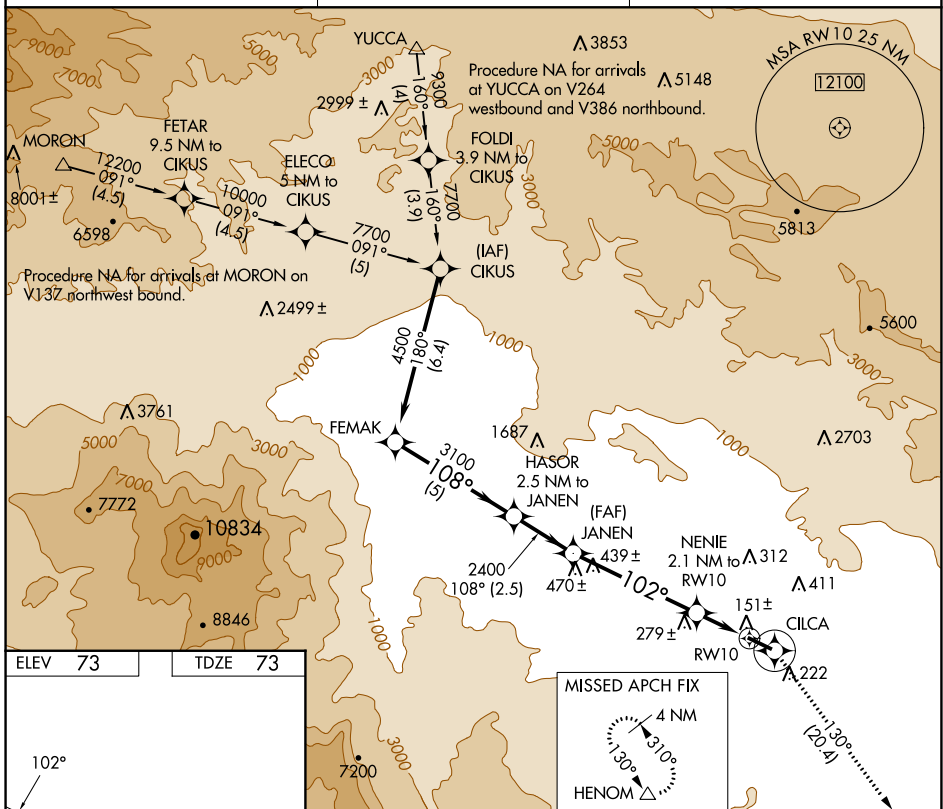
▼ Use Jacqueline Cochran Rgnl altimeter setting.
 ▲ NA Circling Rwy 28 NA at night.

MISSED APPROACH: Climb to 3700 direct CILCA and via 130° track to HENOM and hold.

TRM ASOS
118.325

SOCAL APP CON *
135.275 251.1

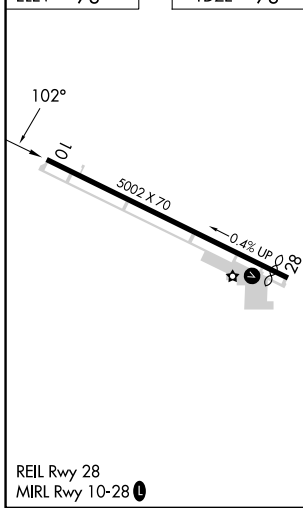
UNICOM
122.8 (CTAF) 0



SW-3, 22 FEB 2024 to 21 MAR 2024

SW-3, 22 FEB 2024 to 21 MAR 2024

ELEV	73	TDZE	73
------	----	------	----



	FEMAK	HASOR 2.5 NM to JANEN	JANEN	3700 CILCA	HENOM
				130° tr	△
Procedure Turn NA	4500	3100	2400	800	
		108°	102°		
			3.08% TCH 40		
				2.1 NM to RWY 10	
CATEGORY	A	B	C	D	
LNAV MDA	480-1	407 (500-1)	480-1¼ 407 (500-1¼)	NA	
CIRCLING	700-1	627 (700-1)	1100-3 1027 (1100-3)	NA	

APP CRS	Rwy Idg	4702
296°	TDZE	66
	Apt Elev	73

RNAV (GPS) RWY 28

BERMUDA DUNES (UDD)

RNP APCH.
 Use Jacqueline Cochran Rgnl altimeter setting. Rwy 28 Straight-in and Circling minimums NA at night. Rwy 28 helicopter visibility reduction below 1 SM NA.

MISSED APPROACH: Climb to 3300 via course 296° to AKEGE WP then right turn via course 298° to PSP VORTAC and hold.

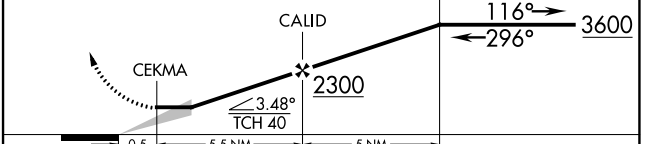
TRM ASOS 118.325	SOCAL APP CON * 135.275 251.1	UNICOM 122.8 (CTAF) 0
----------------------------	---	---------------------------------



ELEV 73	TDZE 66
---------	---------



3300 AKEGE PSP VGSI and descent angles not coincident (VGSI Angle 3.00/TCH 33). 4 NM Holding Pattern
 crs 296° crs 298°



CATEGORY	A	B	C	D
LNAV MDA	1020-1¼ 954 (1000-1¼)	1020-1½ 954 (1000-1½)	1020-3 954 (1000-3)	NA
CIRCLING	1020-1¼ 947 (1000-1¼)	1020-1½ 947 (1000-1½)	1100-3 1027 (1100-3)	NA

SW-3, 22 FEB 2024 to 21 MAR 2024

SW-3, 22 FEB 2024 to 21 MAR 2024

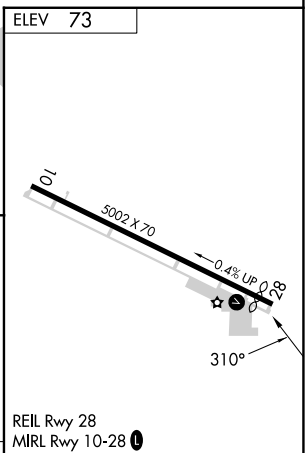
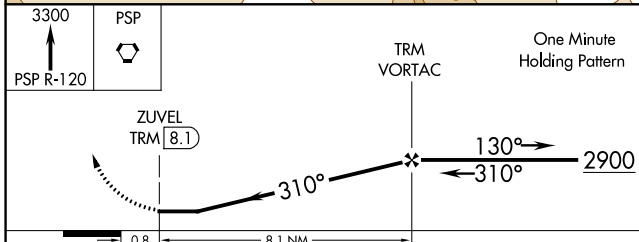
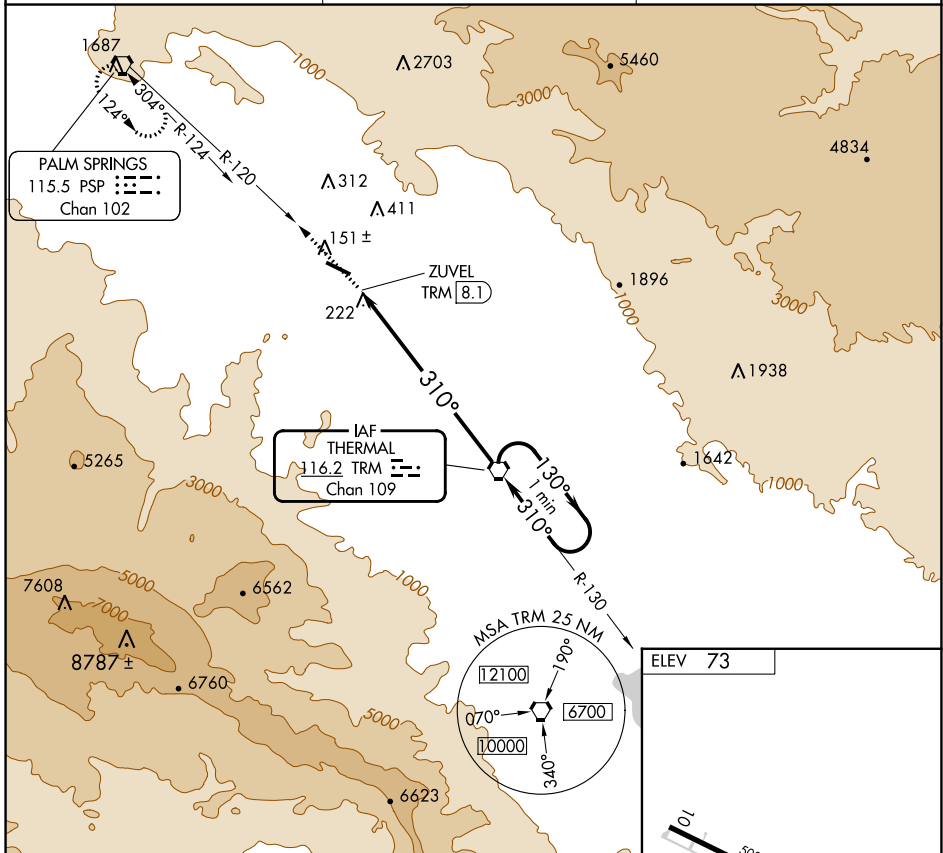
VORTAC TRM 116.2 Chan 109	APP CRS 310°	Rwy Idg TDZE Apt Elev N/A N/A 73
---	------------------------	--

VOR-C
BERMUDA DUNES (UDD)

▲ NA Use Jacqueline Cochran Rgnl altimeter setting. Circling to Rwy 28 NA at night.

MISSED APPROACH: Climb to 3300 via PSP R-120 to PSP VORTAC and hold.

TRM ASOS 118.325	SOCAL APP CON ★ 135.275 251.1	UNICOM 122.8 (CTAF) 0
----------------------------	---	--



CATEGORY	A	B	C	D	FAF to MAP 8.1 NM					
CIRCLING	960-1¼	887 (900-1¼)	1100-3 1027 (1100-3)	NA	Knots	60	90	120	150	180
					Min:Sec	8:06	5:24	4:03	3:14	2:42

SW-3, 22 FEB 2024 to 21 MAR 2024

SW-3, 22 FEB 2024 to 21 MAR 2024