

WAAS CH 72928 W11A	APP CRS 111°	Rwy Idg TDZE Apt Elev	3210 525 525
--	------------------------	-----------------------------	---

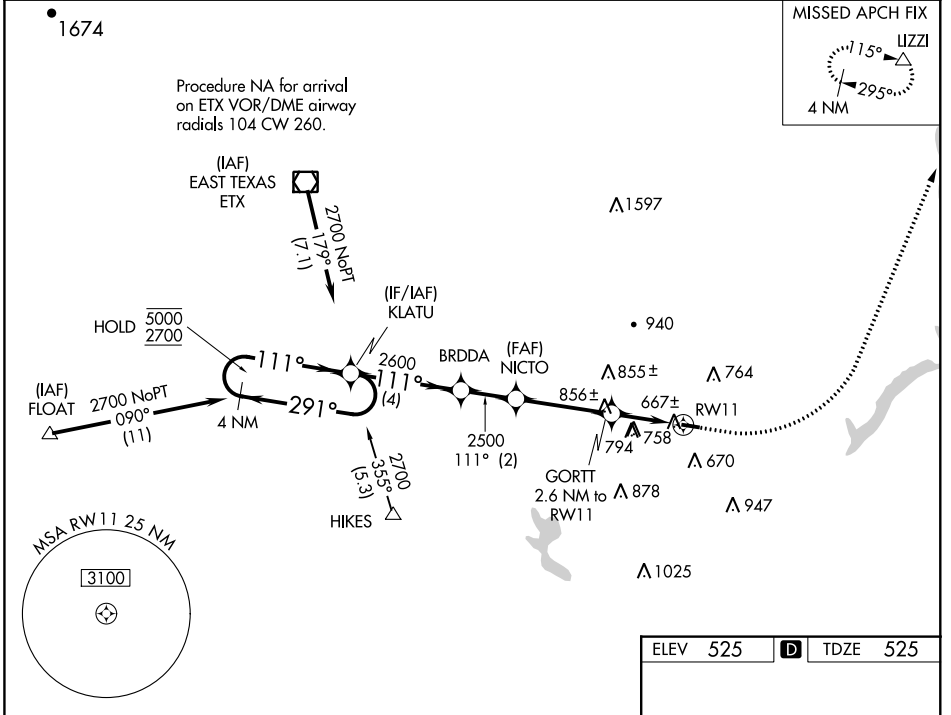
RNAV (GPS) RWY 11

QUAKERTOWN (UKT)

RNP APCH.
 Procedure NA at night.
 Rwy 11 helicopter visibility reduction below 1 SM NA.

MISSED APPROACH: Climb to 1100 then climbing left turn to 3000 direct LIZZI and hold.

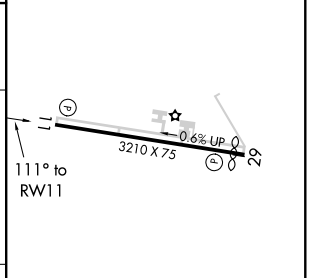
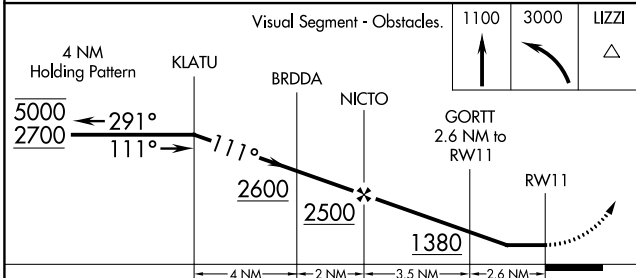
AWOS-3 119.475	PHILADELPHIA APP CON 123.8 291.7	CLNC DEL 118.55	UNICOM 122.725 (CTAF)
--------------------------	--	---------------------------	---------------------------------



NE-4, 02 DEC 2021 to 30 DEC 2021

NE-4, 02 DEC 2021 to 30 DEC 2021

ELEV 525	D TDZE 525
----------	-------------------



CATEGORY	A	B	C	D
LP MDA	920-1	395 (400-1)	920-1½ 395 (400-1½)	NA
LNAV MDA	1020-1	495 (500-1)	1020-1¾ 495 (500-1¾)	NA
C CIRCLING	1040-1 515 (600-1)	1080-1 555 (600-1)	1220-2 695 (700-2)	NA

REIL Rwys 11 and 29
MIRL Rwy 11-29

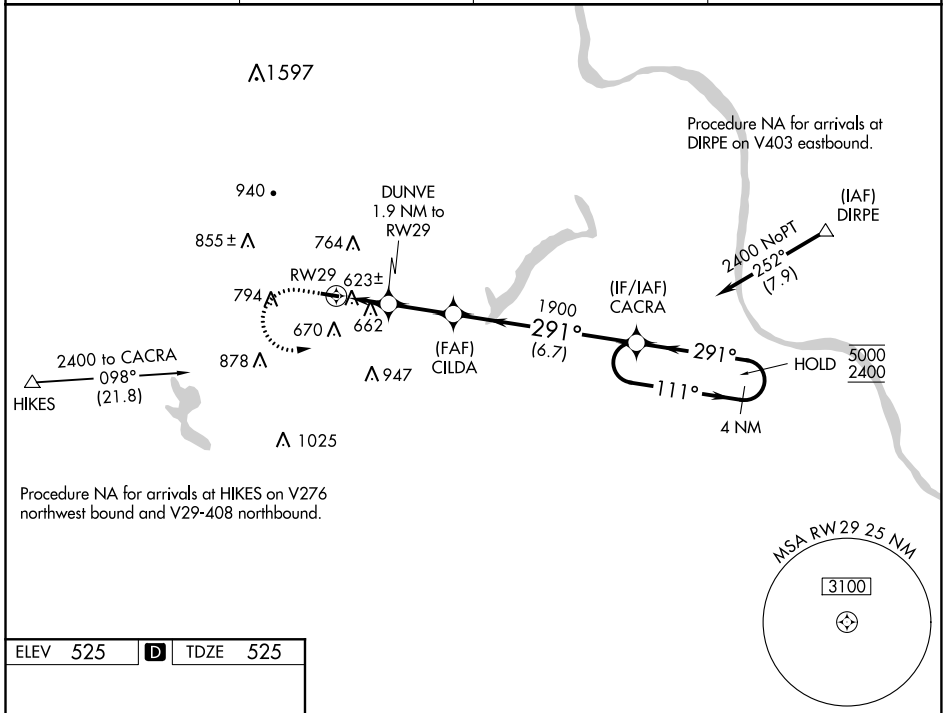
WAAS CH 61228 W29A	APP CRS 291°	Rwy Idg TDZE Apt Elev	3020 525 525
--	------------------------	-----------------------------	---

RNAV (GPS) RWY 29

QUAKERTOWN (UKT)

RNP APCH - GPS.	MISSED APPROACH: Climb to 1000, then climbing left turn to 2400 direct CACRA and hold.
⚠ Circling Rwy 11 NA at night. ⚠ Rwy 29 helicopter visibility reduction below 3/4 SM NA.	

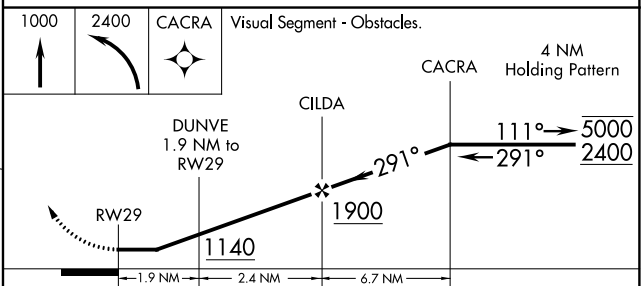
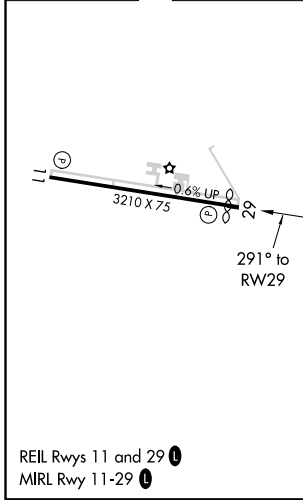
AWOS-3 119.475	PHILADELPHIA APP CON 123.8 291.7	CLNC DEL 118.55	UNICOM 122.725 (CTAF) 0
--------------------------	--	---------------------------	-----------------------------------



NE-4, 02 DEC 2021 to 30 DEC 2021

NE-4, 02 DEC 2021 to 30 DEC 2021

ELEV 525	D	TDZE 525
----------	----------	----------



CATEGORY	A	B	C	D
LP MDA	920-1	395 (400-1)	920-1 1/8 395 (400-1 1/8)	NA
LNAV MDA	960-1	435 (500-1)	960-1 1/4 435 (500-1 1/4)	NA
C CIRCLING	1040-1 515 (600-1)	1080-1 555 (600-1)	1220-2 695 (700-2)	NA