

(DAWNN1.DAWNN) 23334  
**DAWNN ONE DEPARTURE**

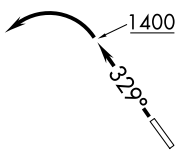
AL-5902 (FAA)

INDIANAPOLIS METRO (UMP)  
 INDIANAPOLIS, INDIANA

**TOP ALTITUDE:  
 ASSIGNED BY ATC**

AWOS-3  
 119.375  
 CLNC DEL  
 121.625  
 INDIANAPOLIS DEP CON  
 127.15 317.8

BRICKYARD  
 116.3 VHP  
 Chan 110



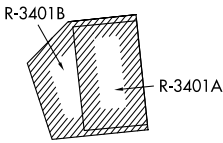
TERRE HAUTE  
 115.3 TTH  
 Chan 100

HOOSIER  
 110.2 OOM  
 Chan 39

SNEVA  
 RADAR

FOYTT  
 RADAR

TAKEOFF MINIMUMS:  
 Rwy 15: NA-obstacles.  
 Rwy 33: Standard.



DAWNN  
 10000  
 (For LOUISVILLE Transition)

LOUISVILLE  
 114.8 IU  
 Chan 95

MYSTIC  
 108.2 MYS

EC-2, 22 FEB 2024 to 21 MAR 2024

EC-2, 22 FEB 2024 to 21 MAR 2024

- NOTE: RADAR required.
- NOTE: Select appropriate localizer/DME frequency/channel prior to departure.
- NOTE: Turbojets accelerate to 250K until reaching 10000, if unable advise ATC.
- NOTE: Assigned to aircraft with a requested altitude of 11000 or above.

(NARRATIVE ON FOLLOWING PAGE)

NOTE: Chart not to scale.

**DAWNN ONE DEPARTURE**  
 (DAWNN1.DAWNN) 07DEC17

INDIANAPOLIS, INDIANA  
 INDIANAPOLIS METRO (UMP)



DEPARTURE ROUTE DESCRIPTION

TAKEOFF RWY 33: Climb heading 329° to 1400 before turning left.  
Then on assigned heading to assigned altitude. Thence....

DEPARTING ALL OTHER AUTHORIZED RUNWAYS/AIRPORTS: Climb on  
assigned heading to assigned altitude. Thence....

....on RADAR vectors to join VHP R-174 to DAWNN INT then on transition or  
assigned route. Expect clearance to requested altitude ten minutes after departure.

LOUISVILLE TRANSITION (DAWNN1.IIU): From over DAWNN INT on IIU R-311 to  
IIU VORTAC.

MYSTIC TRANSITION (DAWNN1.MYS): From over DAWNN INT on MYS R-002 to  
MYS VOR.

EC-2, 22 FEB 2024 to 21 MAR 2024

EC-2, 22 FEB 2024 to 21 MAR 2024


(OOM5.OOM) 23334


# HOOSIER FIVE DEPARTURE


AL-5902 (FAA)

INDIANAPOLIS METRO (UMP)  
INDIANAPOLIS, INDIANA

AWOS-3  
119.375  
CLNC DEL  
121.625  
INDIANAPOLIS DEP CON  
127.15 317.8

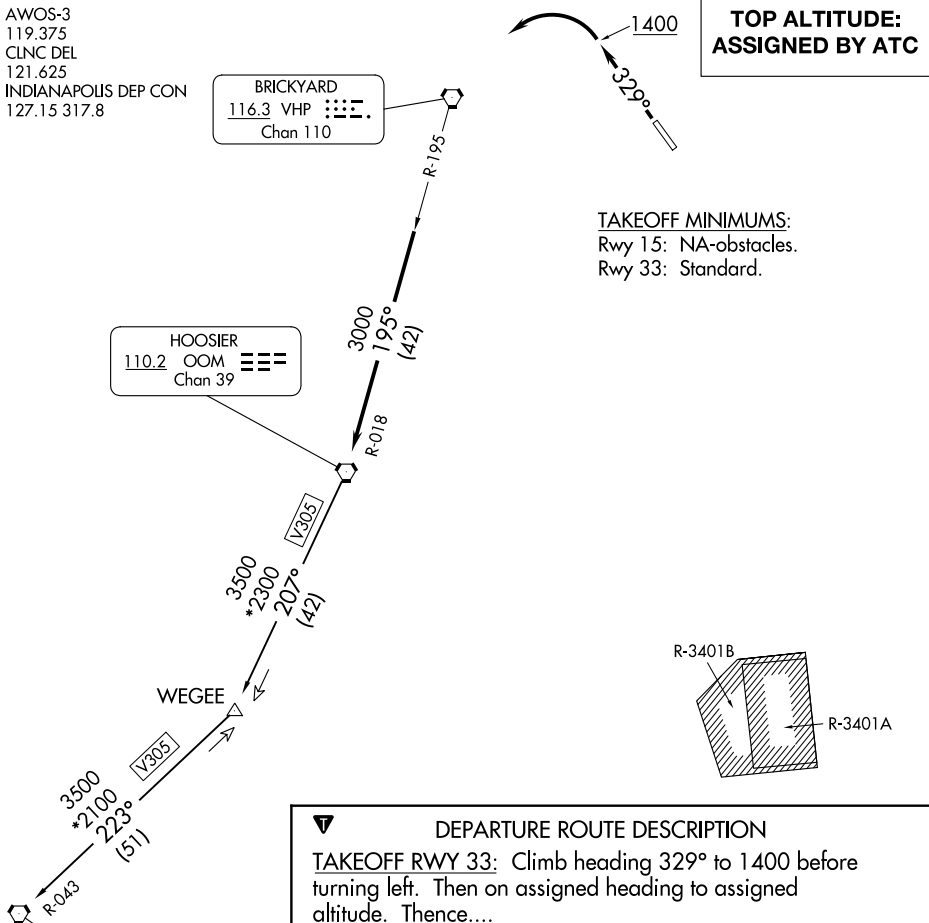
BRICKYARD  
116.3 VHP   
Chan 110

HOOSIER  
110.2 OOM   
Chan 39

POCKET CITY  
113.3 PXV   
Chan 80

**TOP ALTITUDE:  
ASSIGNED BY ATC**

TAKEOFF MINIMUMS:  
Rwy 15: NA-obstacles.  
Rwy 33: Standard.



**DEPARTURE ROUTE DESCRIPTION**

**TAKEOFF RWY 33:** Climb heading 329° to 1400 before turning left. Then on assigned heading to assigned altitude. Thence....

**DEPARTING ALL OTHER AUTHORIZED RUNWAYS:** Climb on assigned heading to assigned altitude. Thence....

....expect RADAR vectors to join VHP R-195 to OOM VORTAC then via transition or assigned route. Expect clearance to requested altitude ten minutes after departure.

**POCKET CITY TRANSITION (OOM5.PXV):** From over OOM VORTAC via OOM R-207 to WEGEE, then via PXV R-043 to PXV VORTAC.

- NOTE: RADAR required.
- NOTE: Select appropriate localizer/DME frequency/channel prior to departure.
- NOTE: Turbojets accelerate to 250K until reaching 10000, if unable advise ATC.
- NOTE: Assigned to aircraft with a requested altitude of 11000 or above.

NOTE: Chart not to scale.

EC-2, 22 FEB 2024 to 21 MAR 2024

EC-2, 22 FEB 2024 to 21 MAR 2024

HOOSIER FIVE DEPARTURE  
(OOM5.OOM) 01FEB18

INDIANAPOLIS, INDIANA  
INDIANAPOLIS METRO (UMP)

(MAREO5.MAREO) 23334  
**MAREO FIVE DEPARTURE**

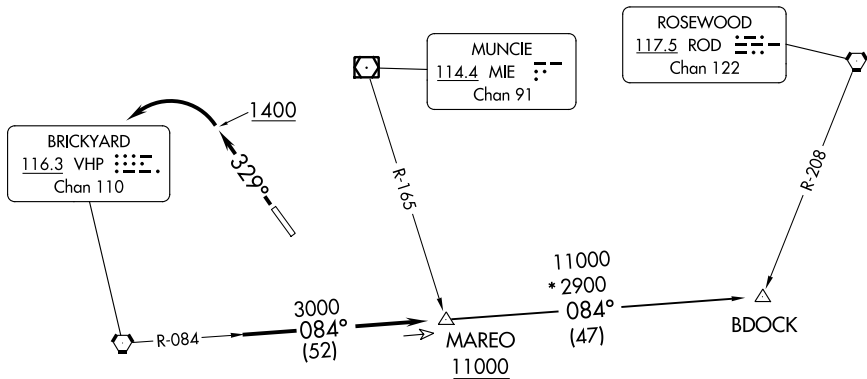
AL-5902 (FAA)

INDIANAPOLIS METRO (UMP)  
 INDIANAPOLIS, INDIANA

AWOS-3  
 119.375  
 CLNC DEL  
 121.625  
 INDIANAPOLIS DEP CON  
 127.15 317.8

**TOP ALTITUDE:  
 ASSIGNED BY ATC**

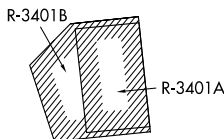
TAKEOFF MINIMUMS  
 Rwy 15: NA-obstacles.  
 Rwy 33: Standard.



EC-2, 22 FEB 2024 to 21 MAR 2024

EC-2, 22 FEB 2024 to 21 MAR 2024

- NOTE: RADAR required.
- NOTE: Select appropriate localizer/DME frequency/channel prior to departure.
- NOTE: Turbojets accelerate to 250K until reaching 10000, if unable advise ATC.
- NOTE: Assigned to aircraft with a requested altitude of 11000 or above.



NOTE: Chart not to scale.



**DEPARTURE ROUTE DESCRIPTION**

TAKEOFF RWY 33: Climb heading 329° to 1400 before turning left. Then on assigned heading to assigned altitude. Thence....

DEPARTING ALL OTHER AUTHORIZED RUNWAYS: Climb on assigned heading to assigned altitude. Thence....

....expect RADAR vectors to join VHP R-084 to MAREO INT then via transition or assigned route. Expect clearance to requested altitude ten minutes after departure.

BDOCK TRANSITION (MAREO5.BDOCK): From over MAREO INT via VHP R-084 to BDOCK INT.

**MAREO FIVE DEPARTURE**  
 (MAREO5.MAREO) 01FEB18

INDIANAPOLIS, INDIANA  
 INDIANAPOLIS METRO (UMP)

**TOP ALTITUDE:  
 ASSIGNED BY ATC**

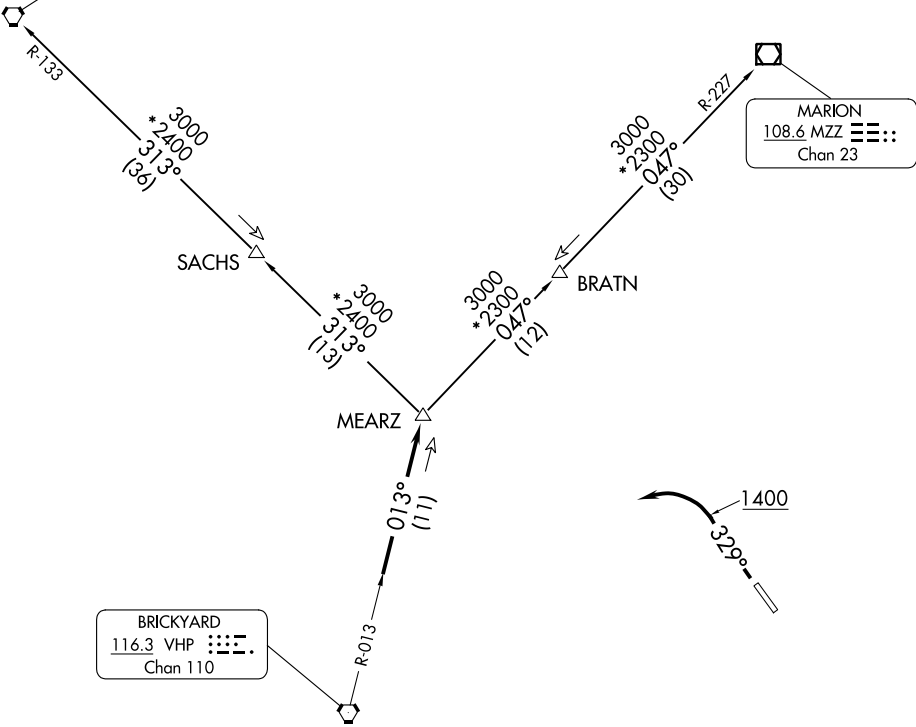
RADAR required.

AWOS-3  
 119.375  
 CLNC DEL  
 121.625  
 INDIANAPOLIS DEP CON  
 127.15 317.8

BOILER  
 115.1 BVT  
 Chan 98

MARION  
 108.6 MZZ  
 Chan 23

BRICKYARD  
 116.3 VHP  
 Chan 110



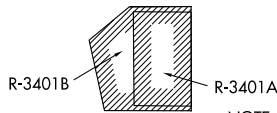
EC-2, 22 FEB 2024 to 21 MAR 2024

EC-2, 22 FEB 2024 to 21 MAR 2024

TAKEOFF MINIMUMS  
 Rwy 15: NA - obstacles.  
 Rwy 33: Standard.

- NOTE: Turbojets accelerate to 250K until reaching 10000, if unable advise ATC.
- NOTE: Assigned to aircraft with a requested altitude of 11000 or above.
- NOTE: Select appropriate localizer/DME frequency/channel prior to departure.

(NARRATIVE ON FOLLOWING PAGE)



NOTE: Chart not to scale.



DEPARTURE ROUTE DESCRIPTION

TAKEOFF RUNWAY 33: Climb on heading 329° to 1400 before turning left. Then on assigned heading to assigned altitude. Thence....

DEPARTING ALL OTHER AUTHORIZED RUNWAYS: Climb on assigned heading to assigned altitude. Thence....

....expect RADAR vectors to join VHP R-013 to MEARZ then on transition or assigned route. Expect clearance to requested altitude ten minutes after departure.

BOILER TRANSITION (MEARZ7.BVT): From over MEARZ on BVT R-133 to BVT VORTAC.

MARION TRANSITION (MEARZ7.MZZ): From over MEARZ on MZZ R-227 to MZZ VOR/DME.

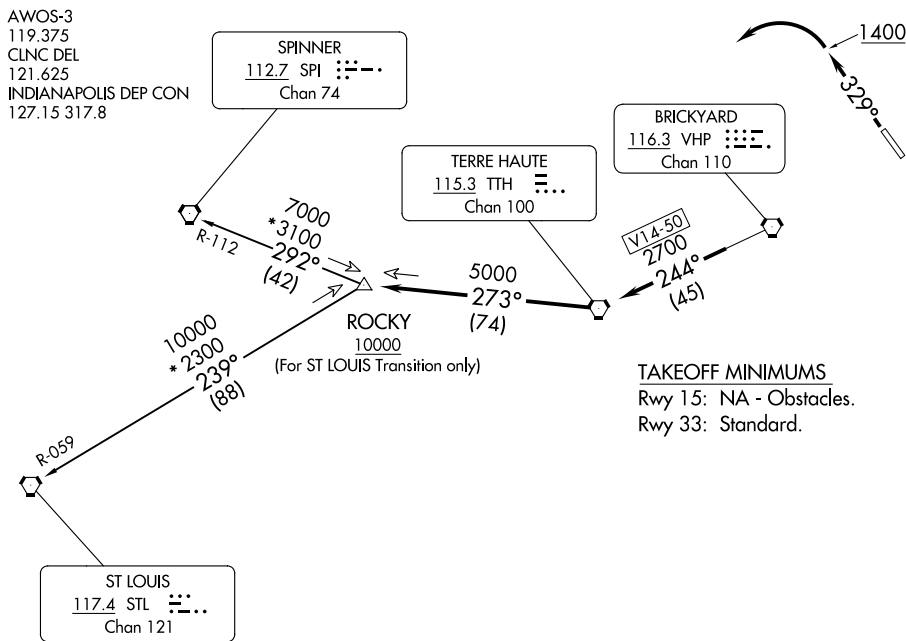
EC-2, 22 FEB 2024 to 21 MAR 2024

EC-2, 22 FEB 2024 to 21 MAR 2024

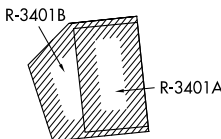
(ROCKY1.ROCKY) 23334  
**ROCKY ONE DEPARTURE**

AL-5902 (FAA)

INDIANAPOLIS METRO (UMP)  
 INDIANAPOLIS, INDIANA



- NOTE: RADAR required.
- NOTE: Select appropriate localizer/DME frequency/channel prior to departure.
- NOTE: Turbojets accelerate to 250K until reaching 10000, if unable advise ATC.
- NOTE: Assigned to aircraft with a requested altitude of 11000 or above.



NOTE: Chart not to scale.

**DEPARTURE ROUTE DESCRIPTION**  
TAKEOFF RWY 33: Climb heading 329° to 1400 before turning left. Then on assigned heading to assigned altitude. Thence . . . .

DEPARTING ALL OTHER AUTHORIZED RUNWAYS: Climb on assigned heading to assigned altitude. Thence . . . .

. . . . expect RADAR vectors to join VHP R-244 to TTH VORTAC, then via TTH R-273 to ROCKY INT then via transition or assigned route. Expect clearance to requested altitude ten minutes after departure.

SPINNER TRANSITION (ROCKY1.SPI): From over ROCKY INT on SPI R-112 to SPI VORTAC.  
ST LOUIS TRANSITION (ROCKY1.STL): From over ROCKY INT on STL R-059 to STL VORTAC.

**ROCKY ONE DEPARTURE**  
 (ROCKY1.ROCKY) 01FEB18

INDIANAPOLIS, INDIANA  
 INDIANAPOLIS METRO (UMP)

EC-2, 22 FEB 2024 to 21 MAR 2024

EC-2, 22 FEB 2024 to 21 MAR 2024