

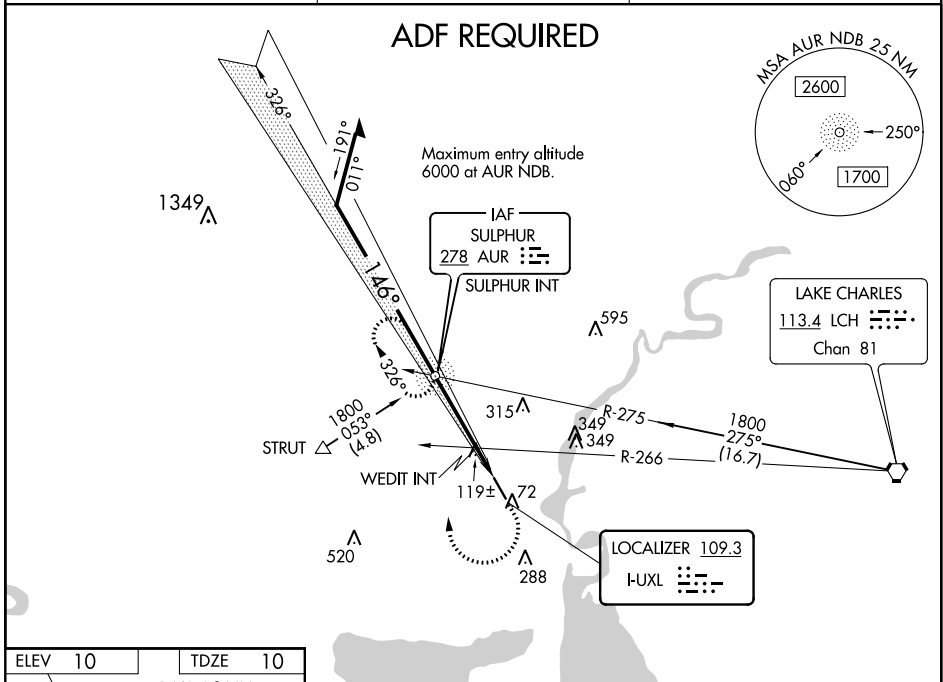
LOC I-XL 109.3	APP CRS 146°	Rwy Idg 5001 TDZE 10 Apt Elev 10
--------------------------	------------------------	---

LOC RWY 15
SOUTHLAND FIELD (UXL)

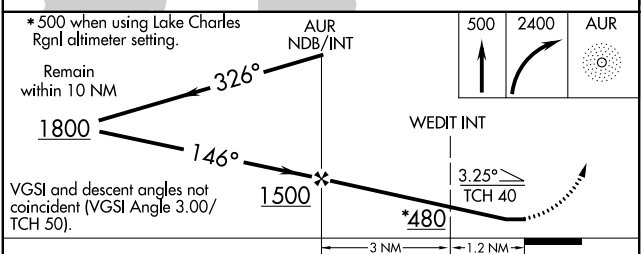
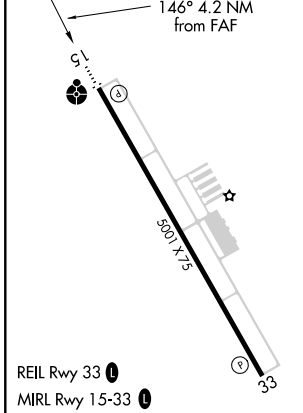
⚠ Inoperative table does not apply to S-15 Cat C. Visibility reduction by helicopters NA. When local altimeter setting not received, use Lake Charles Rgnl altimeter setting and increase all MDA 20 feet.

ODALS MISSED APPROACH: Climb to 500 then climbing right turn to 2400 direct AUR NDB and hold, continue climb-in-hold to 2400.

AWOS-3PT 118.175	LAKE CHARLES APP CON ★ 119.35 282.3	UNICOM 122.8 (CTAF) 0
----------------------------	---	---------------------------------



ELEV 10	TDZE 10
---------	---------



CATEGORY	A	B	C	D
S-15	480-3/4	470 (500-3/4)	480-1 1/4 470 (500-1 1/4)	480-1 1/2 470 (500-1 1/2)
CIRCLING	480-1 470 (500-1)	520-1 510 (600-1)	520-1 1/2 510 (600-1 1/2)	640-2 630 (700-2)
WEDIT FIX MINIMUMS				
S-15	380-3/4 370 (400-3/4)			380-1 1/4 370 (400-1 1/4)
CIRCLING	420-1 410 (500-1)	520-1 510 (600-1)	520-1 1/2 510 (600-1 1/2)	640-2 630 (700-2)

FAF to MAP 4.2 NM					
Knots	60	90	120	150	180
Min:Sec	4:12	2:48	2:06	1:41	1:24

SC-4, 25 FEB 2021 to 25 MAR 2021

SC-4, 25 FEB 2021 to 25 MAR 2021

WAAS CH 86711 W15A	APP CRS 146°	Rwy Idg TDZE Apt Elev	5001 10 10
--	------------------------	-----------------------------	---------------------------------------

RNAV (GPS) RWY 15

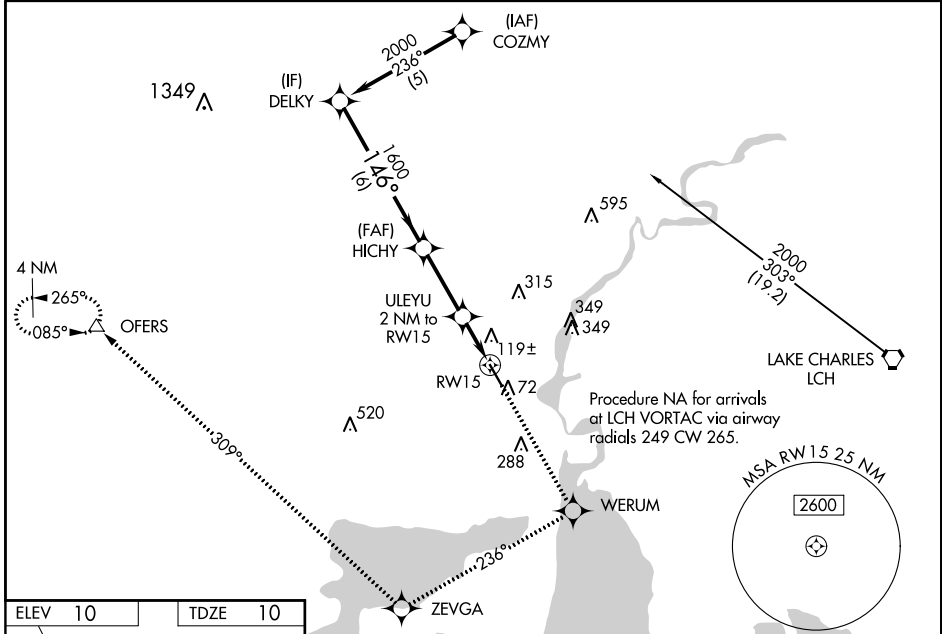
SOUTHLAND FIELD (UXL)

⚠ Inoperative table does not apply to LNAV/VNAV. Baro-VNAV NA when using Lake Charles Rgnl altimeter setting. For uncompensated Baro-VNAV systems, LNAV/VNAV NA below -15°C (5°F) or above 48°C (118°F). DME/DME RNP-0.3 NA. Visibility reduction by helicopters NA. When local altimeter setting not received, use Lake Charles Rgnl altimeter setting and increase all DA 19 feet, all MDA 20 feet and LPV visibility ¼ mile all Cats. VDP NA when using Lake Charles Rgnl altimeter setting.

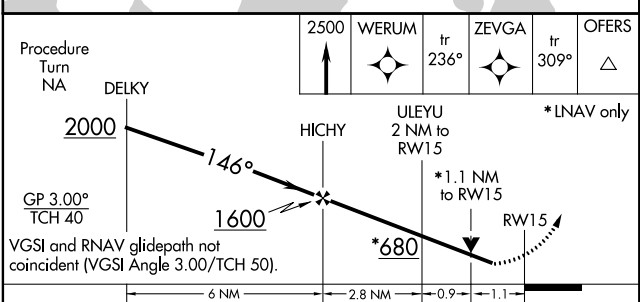
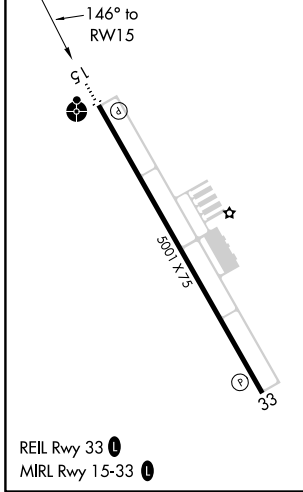
ODALS

MISSED APPROACH: Climb to 2500 direct WERUM and via 236° track to ZEVGA and via 309° track to OFERS and hold.

AWOS-3PT 118.175	LAKE CHARLES APP CON ★ 119.35 282.3	UNICOM 122.8 (CTAF)
----------------------------	---	-------------------------------



ELEV 10	TDZE 10
---------	---------



CATEGORY	A	B	C	D
LPV DA		309-1	299 (300-1)	
LNAV/VNAV DA		419-1½	409 (500-1½)	
LNAV MDA		380-¾	370 (400-¾)	380-1¼ 370 (400-1¼)
CIRCLING	420-1 410 (500-1)	520-1 510 (600-1)	520-1½ 510 (600-1½)	640-2 630 (700-2)

SC-4, 25 FEB 2021 to 25 MAR 2021

SC-4, 25 FEB 2021 to 25 MAR 2021

WAAS CH 99610 W33A	APP CRS 326°	Rwy Idg TDZE Apt Elev	5001 10 10
--	------------------------	-----------------------------	---------------------------------------

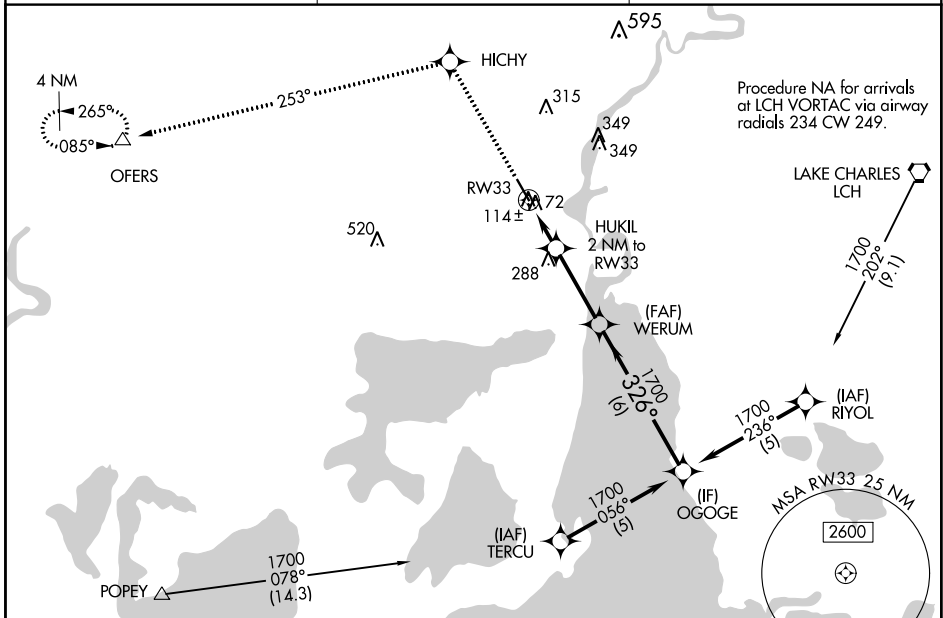
RNAV (GPS) RWY 33

SOUTHLAND FIELD (UXL)

⚠ Baro-VNAV NA when using Lake Charles Rgnl altimeter setting. For uncompensated Baro-VNAV systems, LNAV/VNAV NA below -15°C (5°F) or above 49°C (120°F).
⚠ DME/DME RNP-0.3 NA. Visibility reduction by helicopters NA. When local altimeter setting not received, use Lake Charles Rgnl altimeter setting and increase all DA 19 feet, all MDA 20 feet and LNAV/VNAV visibility ¼ mile all Cats.

MISSED APPROACH: Climb to 2500 direct HICHY and via 253° track to OFERS and hold.

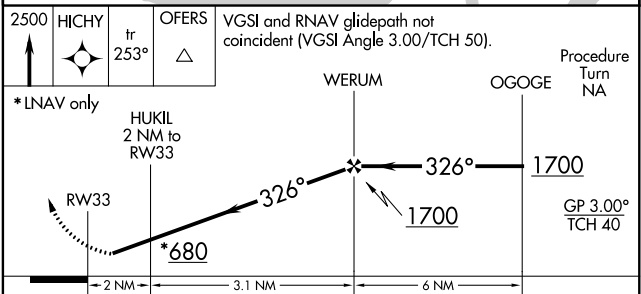
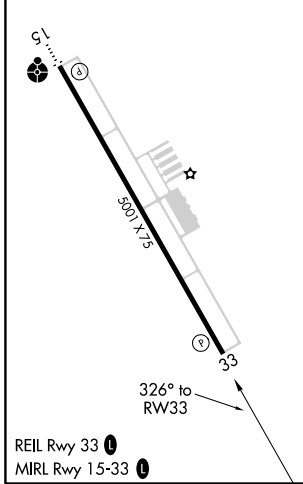
AWOS-3PT 118.175	LAKE CHARLES APP CON * 119.35 282.3	UNICOM 122.8 (CTAF) ①
----------------------------	---	---------------------------------



SC-4, 25 FEB 2021 to 25 MAR 2021

SC-4, 25 FEB 2021 to 25 MAR 2021

ELEV 10	TDZE 10
---------	---------



CATEGORY	A	B	C	D
LPV DA		348-1½	338 (400-1½)	
LNAV/VNAV DA		384-1½	374 (400-1½)	
LNAV MDA		380-1	370 (400-1)	380-1½ 370 (400-1½)
CIRCLING	420-1 410 (500-1)	520-1 510 (600-1)	520-1½ 510 (600-1½)	640-2 630 (700-2)