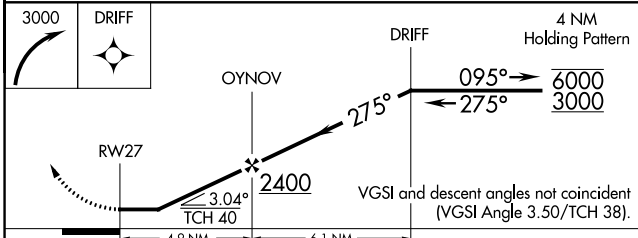
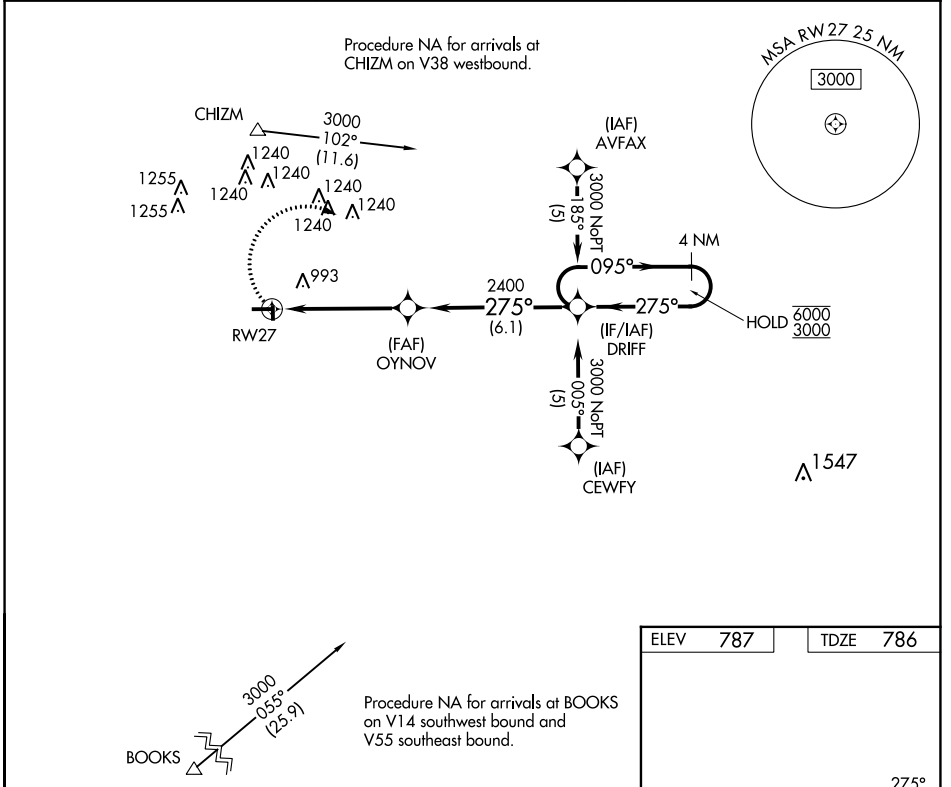


APP CRS	Rwy Idg	4000
275°	TDZE	786
	Apt Elev	787

RNAV (GPS) RWY 27

VAN WERT COUNTY (VNW)

RNP APCH - GPS.		MISSED APPROACH: Climbing right turn to 3000 direct DRIF and hold.
<p>▼ Circling NA to Rwys 18 and 36. Procedure NA at night. Rwy 27 helicopter visibility reduction below 1 SM NA.</p> <p>▲</p>	AWOS-3 125.175	FORT WAYNE APP CON 127.2 284.6
	UNICOM 123.0 (CTAF) 0	



ELEV	787	TDZE	786
------	-----	------	-----

275°

81

27

4000 X 75

01 2558 X 95

36

MIRL Rwy 9-27 0

REIL Rws 9 and 27 0

CATEGORY	A	B	C	D
LNVA MDA	1280-1	494 (500-1)	1280-1 ³ / ₈ 494 (500-1 ³ / ₈)	1280-1 ¹ / ₂ 494 (500-1 ¹ / ₂)
C CIRCLING	1340-1	553 (600-1)	1340-1 ¹ / ₂ 553 (600-1 ¹ / ₂)	1600-2 ³ / ₄ 813 (900-2 ³ / ₄)

EC-2, 22 FEB 2024 to 21 MAR 2024

EC-2, 22 FEB 2024 to 21 MAR 2024

APP CRS	Rwy Idg	4000
094°	TDZE	784
	Apt Elev	787

RNAV (GPS) RWY 9

VAN WERT COUNTY (VNW)

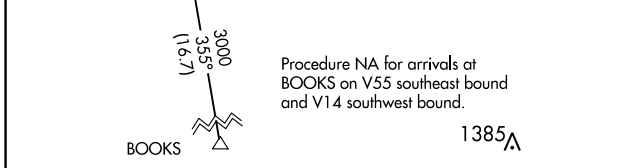
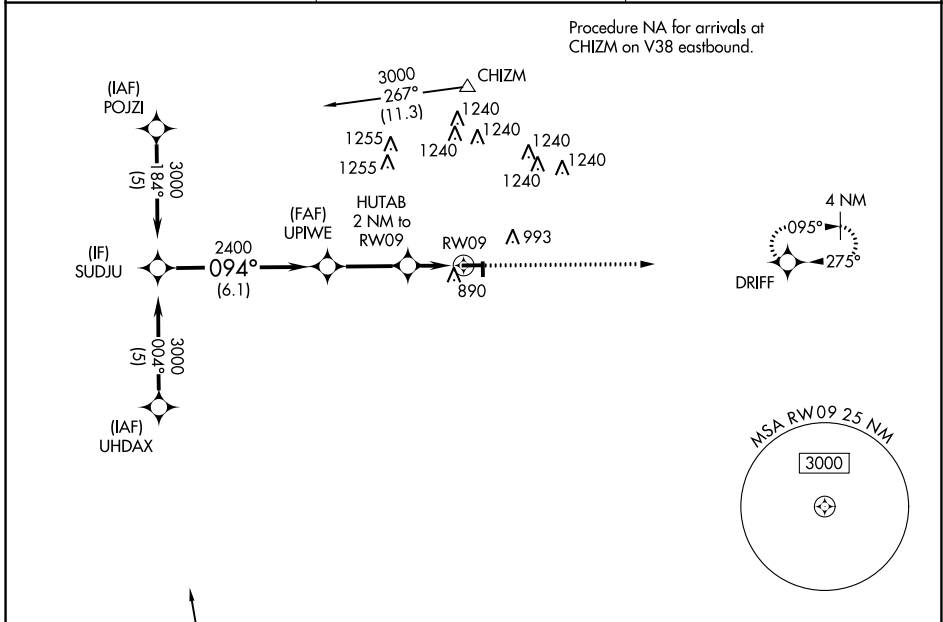
RNP APCH - GPS.

▼ Circling NA to Rwy 18 and 36. Circling Rwy 27 NA at night. Rwy 9 helicopter visibility reduction below $\frac{3}{4}$ SM NA.

▲

MISSED APPROACH: Climb to 3000 direct DRIFT and hold.

AWOS-3 125.175	FORT WAYNE APP CON 127.2 284.6	UNICOM 123.0 (CTAF) 0
--------------------------	--	---------------------------------



ELEV	787	TDZE	784
------	-----	------	-----

MIRL Rwy 9-27 0
REIL Rwy 9 and 27 0

CATEGORY	A	B	C	D
LNAV MDA	1160-1 376 (400-1)		1160-1 1/4 376 (400-1 1/4)	
CIRCLING	1340-1 553 (600-1)		1340-1 1/2 553 (600-1 1/2)	1600-2 3/4 813 (900-2 3/4)

EC-2, 22 FEB 2024 to 21 MAR 2024

EC-2, 22 FEB 2024 to 21 MAR 2024