

WAAS CH 53511 W12A	APP CRS 118°	Rwy ldg TDZE Apt Elev	7314 23 24
--	------------------------	-----------------------------	---------------------------------------

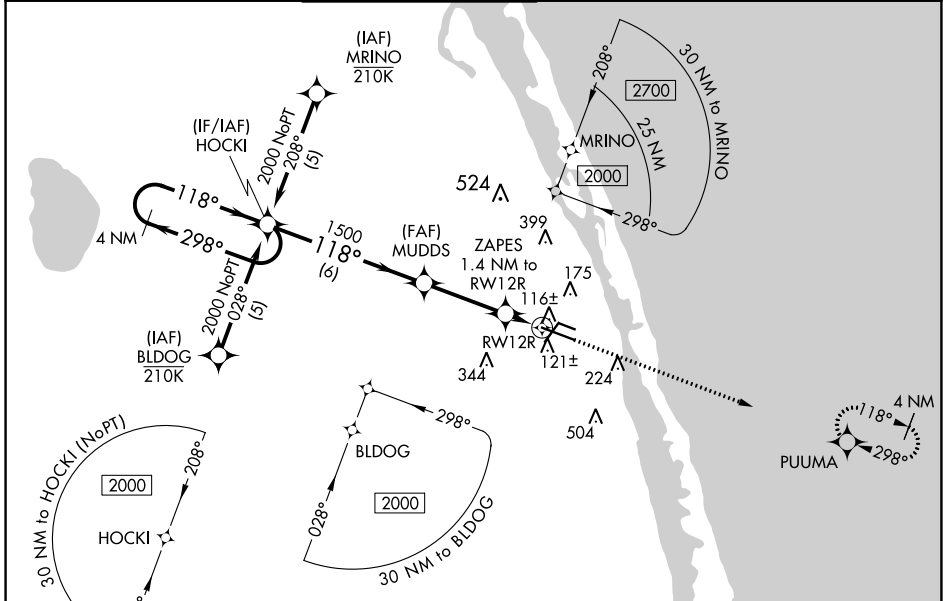
RNAV (GPS) RWY 12R

VERO BEACH RGNL (VRB)

⚠ Circling to Rwy 30R NA at night. Baro-VNAV NA when using Fort Pierce altimeter setting. For uncompensated Baro-VNAV systems, LNAV/VNAV NA below 0°C (32°F) or above 54°C (130°F). DME/DME RNP-0.3 NA. When local altimeter setting not received, use Fort Pierce altimeter setting and increase LPV DA to 302 feet; increase LNAV/VNAV DA to 317 feet; increase all MDAs 40 feet and LNAV Cat C/D visibility 1/8 SM and Circling Cat C/D visibility 1/4 SM.

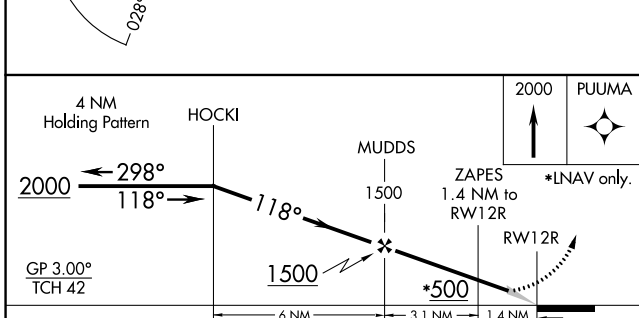
⚠ MISSED APPROACH: Climb to 2000 direct PUUMA and hold.

ATIS 120.575	PALM BEACH APP CON 123,625 225,4 (N)	VERO BEACH TOWER * 126.3 (CTAF) 0	GND CON 127.45	CLNC DEL 134.975	UNICOM 122.95
------------------------	--	---	--------------------------	----------------------------	-------------------------

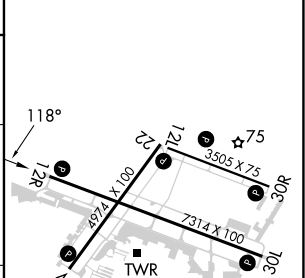


SE-3, 22 FEB 2024 to 21 MAR 2024

SE-3, 22 FEB 2024 to 21 MAR 2024



ELEV 24	D	TDZE 23
---------	---	---------



CATEGORY	A	B	C	D
LPV DA		279-3/4	256 (300-3/4)	
LNAV/VNAV DA		294-7/8	271 (300-7/8)	
LNAV MDA		380-1	357 (400-1)	
CIRCLING	560-1	536 (600-1)	660-1 3/4 636 (700-1 3/4)	820-2 1/2 796 (800-2 1/2)

MIRL Rwy 4-22, 12R-30L, and 12L-30R
REIL Rwy 4, 12R, 22 and 30L

WAAS CH 53611 W22A	APP CRS 223°	Rwy Idg TDZE Apt Elev	4945 23 24
--	------------------------	-----------------------------	---------------------------------------

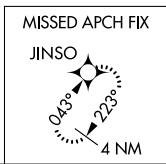
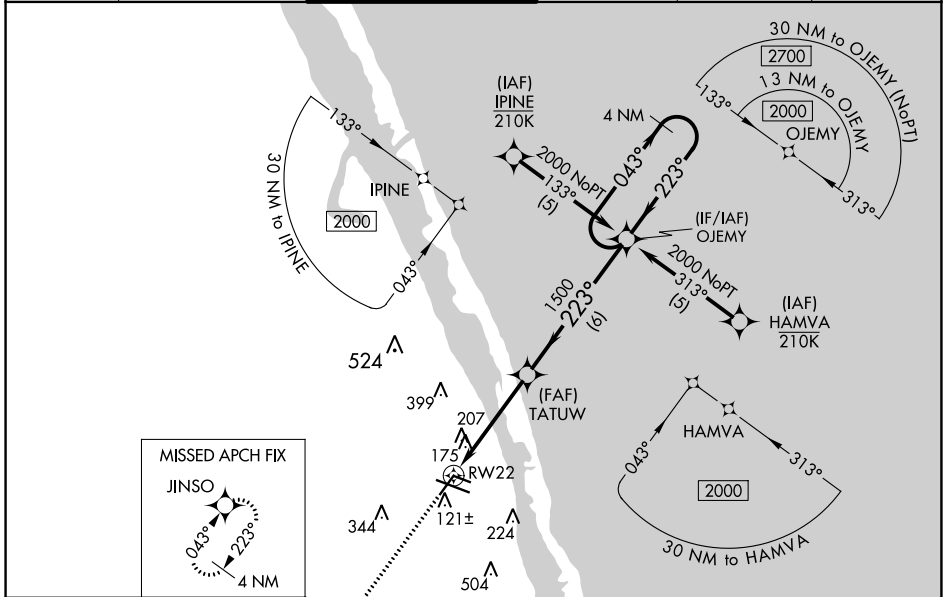
RNAV (GPS) RWY 22

VERO BEACH RGNL (VRB)

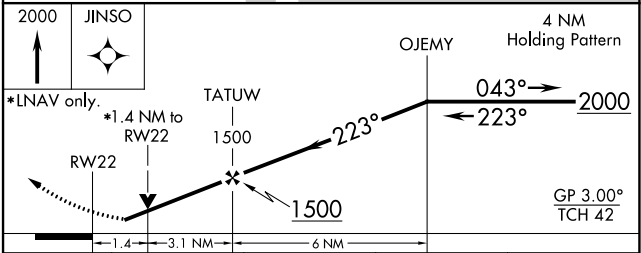
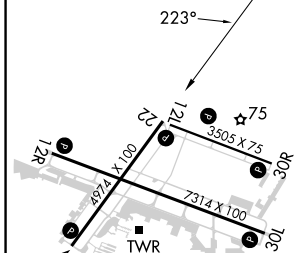
⚠ Circling to Rwy 30R NA at night. For uncompensated Baro-VNAV systems, LNAV/VNAV NA below 0°C (32°F) or above 43°C (109°F). DME/DME RNP-0.3 NA. When local altimeter setting not received, use Fort Pierce altimeter setting and increase LPV DA to 363 feet and all visibilities 1/8 SM; increase LNAV/VNAV DA to 567 feet and all visibilities 1/8 SM; increase all MDAs 40 feet and LNAV Cat C/D visibility 1/8 SM and Circling Cat C/D visibility 1/4 SM. Baro-VNAV and VDP NA when using Fort Pierce altimeter setting. Rwy 22 helicopter visibility reduction below 3/4 SM NA.

MISSED APPROACH:
Climb to 2000 direct
JINSO and hold.

ATIS 120.575	PALM BEACH APP CON 123.625 225.4 (N)	VERO BEACH TOWER * 126.3 (CTAF) 0	GND CON 127.45	CLNC DEL 134.975	UNICOM 122.95
------------------------	--	---	--------------------------	----------------------------	-------------------------



ELEV 24	D	TDZE 23
---------	----------	---------



CATEGORY	A	B	C	D
LPV DA		340-1	317 (400-1)	
LNAV/VNAV DA		544-1 3/4	521 (600-1 3/4)	
LNAV MDA	520-1	497 (500-1)	520-1 3/8	497 (500-1 3/8)
CIRCLING	560-1	536 (600-1)	660-1 3/4 636 (700-1 3/4)	820-2 1/2 796 (800-2 1/2)

MIRL Rwy 4-22, 12R-30L, and 12L-30R
REIL Rwy 4, 12R, 22 and 30L

SE-3, 22 FEB 2024 to 21 MAR 2024

SE-3, 22 FEB 2024 to 21 MAR 2024

WAAS CH 69411 W30A	APP CRS 298°	Rwy ldg TDZE 22 Apt Elev 24	7276
--	------------------------	---	-------------

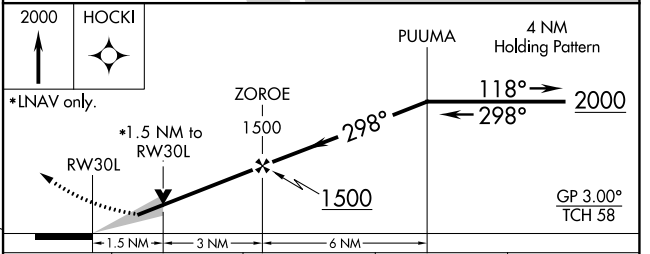
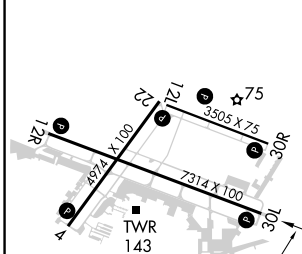
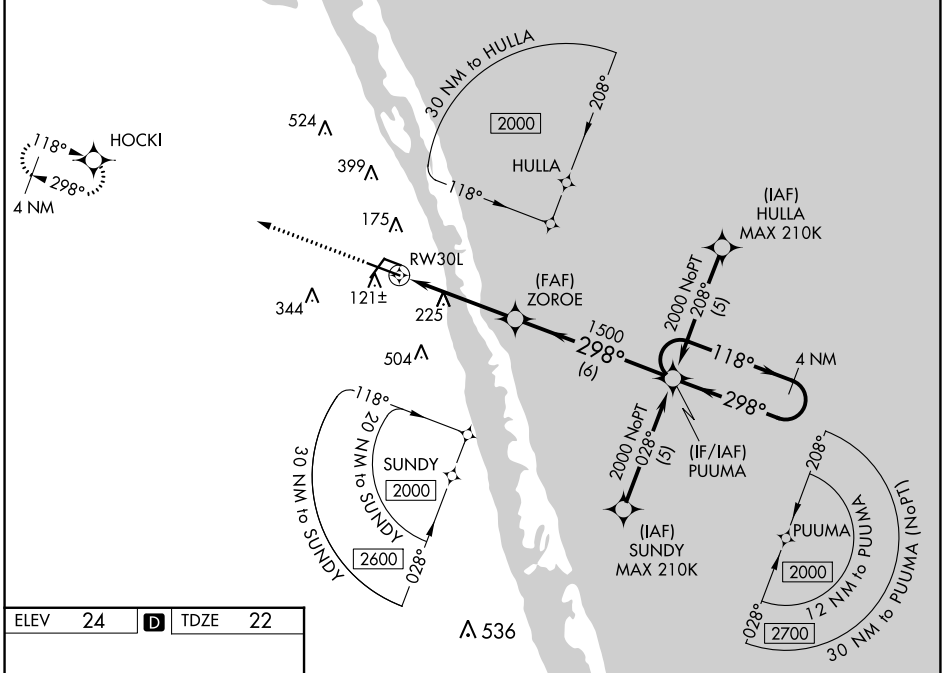
RNAV (GPS) RWY 30L

VERO BEACH RGNL (VRB)

⚠ Circling to Rwy 30R NA at night. Baro-VNAV NA when using Fort Pierce altimeter setting. For uncompensated Baro-VNAV systems, LNAV/VNAV NA below 0°C (32°F) or above 54°C (130°F). DME/DME RNP-0.3 NA. VDP NA when using Fort Pierce altimeter setting. When local altimeter setting not received, use Fort Pierce altimeter setting and increase all DA 23 feet and all MDA 40 feet and increase LNAV/VNAV all Cats visibility 1/8 mile LNAV Cats C/D and Circling visibility Cats C/D 1/4 mile.

MISSED APPROACH:
Climb to 2000 direct HOCKI and hold.

ATIS 120.575	PALM BEACH APP CON 123.625 225.4	VERO BEACH TOWER * 126.3 (CTAF) 0	GND CON 127.45	CLNC DEL 134.975	UNICOM 122.95
------------------------	--	---	--------------------------	----------------------------	-------------------------



ELEV 24	D	TDZE 22
----------------	----------	----------------

MIRL Rwy 4-22, 12R-30L, and 12L-30R **0**
REIL Rwy 4, 12R, 22 and 30L **0**

CATEGORY	A	B	C	D
LPV DA		222-3/4	200 (200-3/4)	
LNAV/VNAV DA		346-1	324 (400-1)	
LNAV MDA	540-1	518 (600-1)	540-1 3/8	518 (600-1 3/8)
CIRCLING	560-1	536 (600-1)	660-1 3/4 636 (700-1 3/4)	820-2 1/2 796 (800-2 1/2)

GP 3.00°
TCH 58

SE-3, 22 FEB 2024 to 21 MAR 2024

SE-3, 22 FEB 2024 to 21 MAR 2024

WAAS CH 61311 W04A	APP CRS 043°	Rwy ldg 4974 TDZE 24 Apt Elev 24
--	------------------------	---

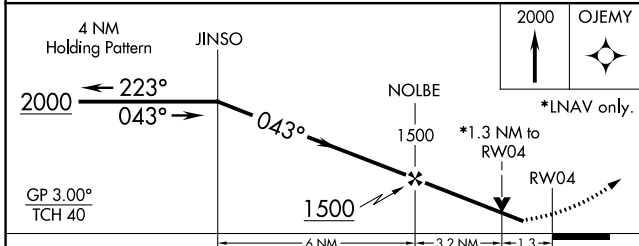
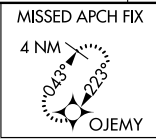
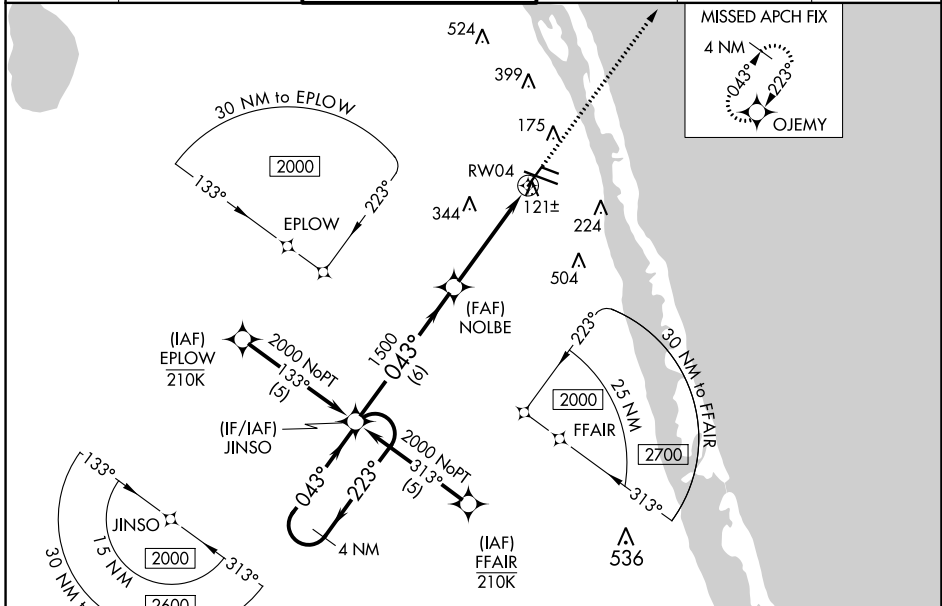
RNAV (GPS) RWY 4

VERO BEACH RGNL (VRB)

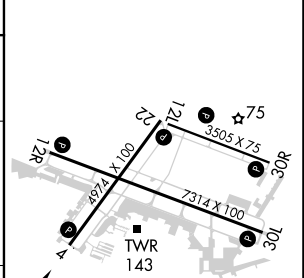
⚠ Circling to Rwy 30R NA at night. For uncompensated Baro-VNAV systems, LNAV/VNAV NA below 0°C (32°F) or above 54°C (130°F). DME/DME RNP-0.3 NA. When local altimeter setting not received, use Fort Pierce altimeter setting and increase LPV DA to 320 feet; increase LNAV/VNAV DA to 378 feet and all visibilities $\frac{1}{8}$ SM; increase all MDAs 40 feet and LNAV Cat C/D and Circling Cat C/D visibility $\frac{1}{4}$ SM. Baro-VNAV and VDP NA when using Fort Pierce altimeter setting. Rwy 4 helicopter visibility reduction below $\frac{3}{4}$ SM NA.

MISSED APPROACH:
Climb to 2000 direct OJEMY and hold.

ATIS 120.575	PALM BEACH APP CON 123.625 225.4 (N)	VERO BEACH TOWER * 126.3 (CTAF) 0	GND CON 127.45	CLNC DEL 134.975	UNICOM 122.95
------------------------	--	---	--------------------------	----------------------------	-------------------------



ELEV 24	D	TDZE 24
---------	----------	---------



CATEGORY	A	B	C	D
LPV DA	297- $\frac{7}{8}$		273 (300- $\frac{7}{8}$)	
LNAV/VNAV DA	355-1 $\frac{1}{8}$		331 (400-1 $\frac{1}{8}$)	
LNAV MDA	480-1	456 (500-1)	480-1 $\frac{3}{8}$	456 (500-1 $\frac{3}{8}$)
CIRCLING	560-1	536 (600-1)	660-1 $\frac{3}{4}$ 636 (700-1 $\frac{3}{4}$)	820-2 $\frac{1}{2}$ 796 (800-2 $\frac{1}{2}$)

MIRL Rwy 4-22, 12R-30L, and 12L-30R **0**
REIL Rwy 4, 12R, 22 and 30L **0**

SE-3, 22 FEB 2024 to 21 MAR 2024

SE-3, 22 FEB 2024 to 21 MAR 2024

VORTAC TRV 117.3 Chan 120	APP CRS 118°	Rwy Idg TDZE Apt Elev	7314 23 24
--	------------------------	-----------------------------	---------------------------------------

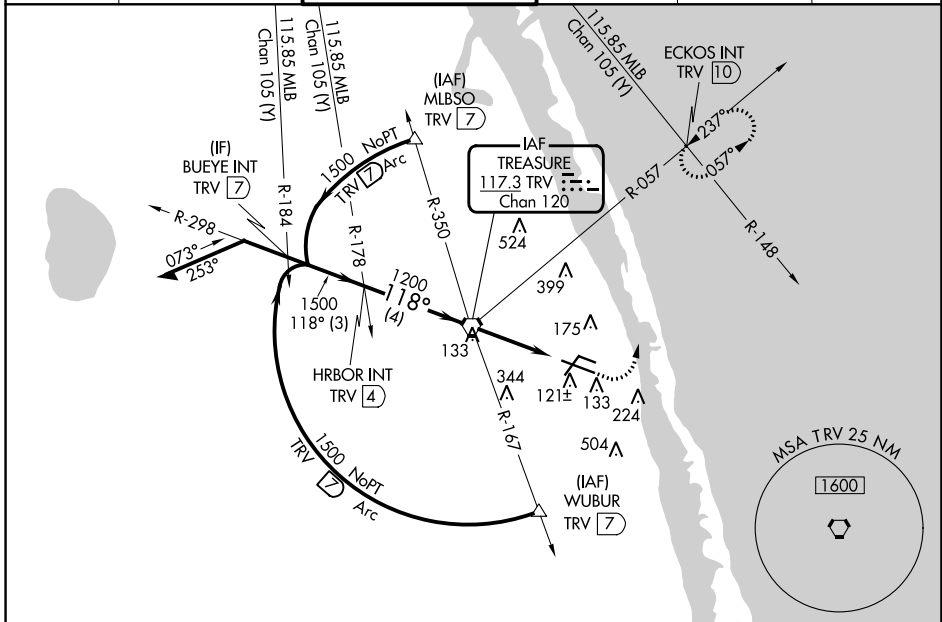
VOR RWY 12R

VERO BEACH RGNL (VRB)

⚠ Circling to Rwy 30R NA at night. When local altimeter setting not received, use Fort Pierce altimeter setting and increase all MDAs 40 feet and Circling Cat C/D visibility ¼ SM.

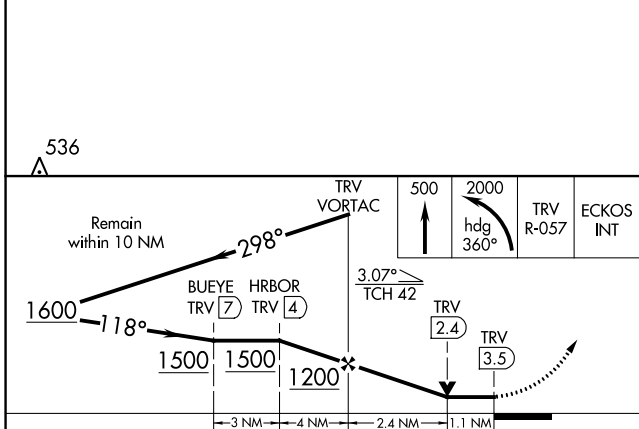
MISSED APPROACH: Climb to 500 then climbing left turn to 2000 heading 360° and on TRV VORTAC R-057 to ECKOS INT/TRV 10 DME and hold.

ATIS 120.575	PALM BEACH APP CON 123.625 225.4 (N)	VERO BEACH TOWER * 126.3 (CTAF) 0	GND CON 127.45	CLNC DEL 134.975	UNICOM 122.95
------------------------	--	---	--------------------------	----------------------------	-------------------------

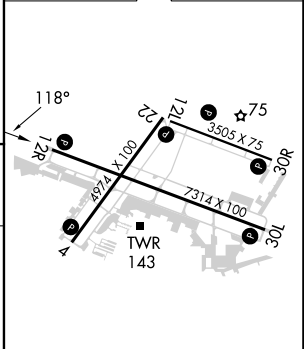


SE-3, 22 FEB 2024 to 21 MAR 2024

SE-3, 22 FEB 2024 to 21 MAR 2024



ELEV 24	D TDZE 23
---------	------------------



MIRL Rwy 4-22, 12R-30L, and 12L-30R **0**
REIL Rwy 4, 12R, 22 and 30L **0**

FAF to MAP 3.5 NM	Knots	60	90	120	150	180
	Min:Sec	3:30	2:20	1:45	1:24	1:10

CATEGORY	A	B	C	D
S-12R		400-1	377 (400-1)	
CIRCLING	560-1	536 (600-1)	660-1¾ 636 (700-1¾)	820-2½ 796 (800-2½)

VORTAC TRV 117.3 Chan 120	APP CRS 298°	Rwy ldg 7276 TDZE 22 Apt Elev 24
--	------------------------	---

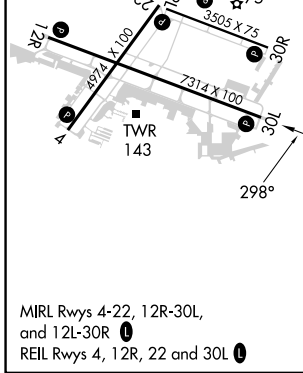
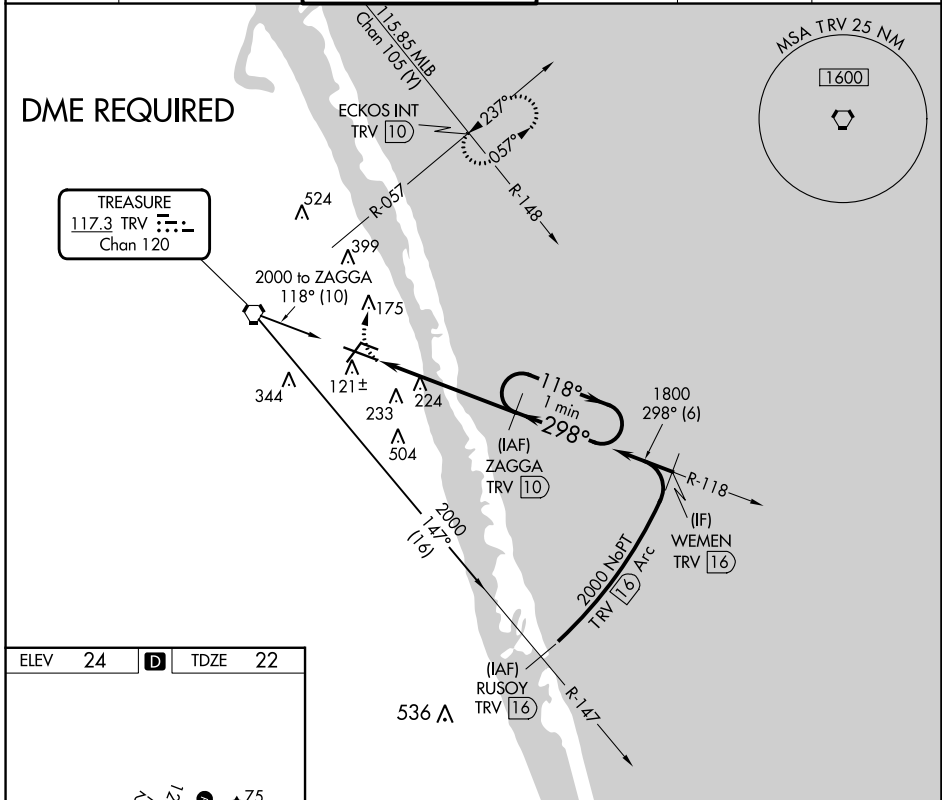
VOR RWY 30L

VERO BEACH RGNL (VRB)

⚠ Circling to Rwy 30R NA at night. When local altimeter setting not received, use Fort Pierce altimeter setting and increase all MDAs 40 feet and Circling Cat C/D visibility ½ SM. VDP NA with Fort Pierce altimeter setting. DME required.

MISSED APPROACH: Climbing right turn to 2000 on heading 360° and TRV VORTAC R-057 to ECKOS INT/TRV 10 DME and hold.

ATIS 120.575	PALM BEACH APP CON 123.625 225.4 (N)	VERO BEACH TOWER ★ 126.3 (CTAF) 0	GND CON 127.45	CLNC DEL 134.975	UNICOM 122.95
------------------------	--	---	--------------------------	----------------------------	-------------------------



2000 hdg 360°	TRV R-057	ECKOS INT	ZAGGA TRV 10	One Minute Holding Pattern
TRV 4.7	TRV 6	TRV 10	1800	118° → ← 298°
1.3 NM		4 NM		≤ 3.05° TCH 58
CATEGORY	A	B	C	D
S-30L	500-1	478 (500-1)	500-1¾	478 (500-1¾)
CIRCLING	560-1	536 (600-1)	660-1¾ 636 (700-1¾)	820-2½ 796 (800-2½)

SE-3, 22 FEB 2024 to 21 MAR 2024

SE-3, 22 FEB 2024 to 21 MAR 2024