

JOOLS ONE ARRIVAL (RNAV)  
(JOOLS.JOOLS1) 15JUN23

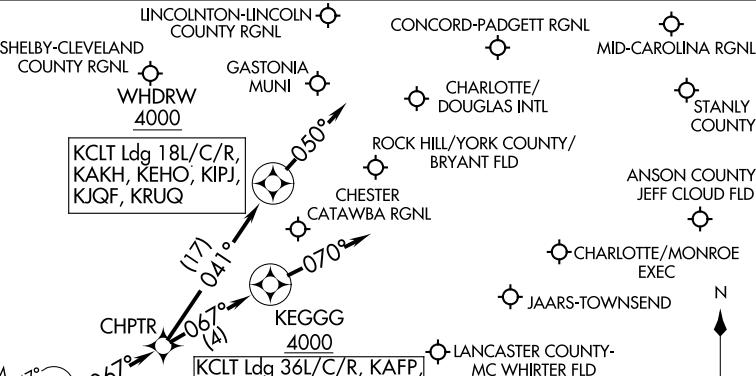
JOOLS ONE ARRIVAL (RNAV)  
(JOOLS.JOOLS1) 23166

AL-78 (FAA)

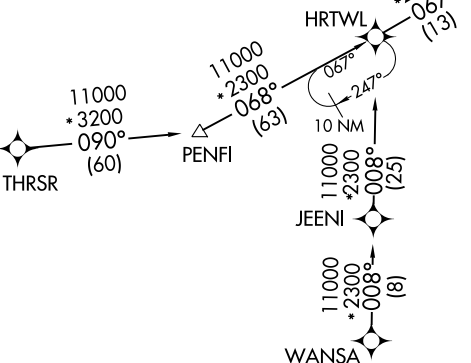
CHARLOTTE NORTH CAROLINA

CHARLOTTE APP CON  
135.6 377.15  
CLT D-ATIS ARR  
121.15  
JQF ATIS \*  
133.675

RNAV 1 - DME/DME/IRU or GPS.  
RADAR required.



Use CAUTION: Parachute jumping 17 NM NE of  
CHPTR, 3 NM radius KDCM (Chester-Catawba Rgnl),  
AOB 14,500 MSL.



**ARRIVAL ROUTE DESCRIPTION**

THRSR TRANSITION (THRSR.JOOLS1)  
WANSR TRANSITION (WANSR.JOOLS1)

KCLT: From JOOLS on track 067° to CHPTR.  
LANDING RUNWAYS 18L/C/R: From CHPTR on track 041° to cross WHDRW at or above 4000, then on track 050°. Expect RADAR vectors to final approach course.  
LANDING RUNWAYS 36L/C/R: From CHPTR on track 067° to cross KEGGG at or above 4000, then on track 070°. Expect RADAR vectors to final approach course.  
LANDING KAKH/KRUQ/KEHO/KJQF/KIPJ: From JOOLS on track 067° to CHPTR, then on track 041° to cross WHDRW at or above 4000, then on track 050°. Expect RADAR vectors to final approach course.  
LANDING KDCM/KEQY/KUZA/KAFP/N52/KVUJ/KLKR: From JOOLS on track 067° to CHPTR, then on track 067° to cross KEGGG at or above 4000, then on track 070°. Expect RADAR vectors to final approach course.

NOTE: Chart not to scale.

CHARLOTTE NORTH CAROLINA

# KABEE THREE ARRIVAL (RNAV)

CONCORD, NORTH CAROLINA

- CHARLOTTE APP CON 126.15 282.325
- CLT D-ATIS ARR 121.15
- JQF ATIS \* 133.675
- RUQ AWOS-3 118.175
- SVH AWOS-3 119.225
- VUJ AWOS-3 128.175
- CONCORD TOWER \* 134.65 (CTAF)
- STANLY TOWER \* 126.275 (CTAF) 291.9

STATESVILLE  
RGNL

MID-CAROLINA  
RGNL

NASCR

STANLY  
COUNTY

CONCORD-  
PADGETT  
RGNL

BIFFL

KABEE  
Expect 15000

COPEL

FLORENCE  
FLO

- NOTE: RADAR required.
- NOTE: RNAV 1.
- NOTE: DME/DME/IRU or GPS required.
- NOTE: Turbojet and turboprop aircraft only.

NOTE: Chart not to scale.

## ARRIVAL ROUTE DESCRIPTION

### FLORENCE TRANSITION (FLO.KABEE3)

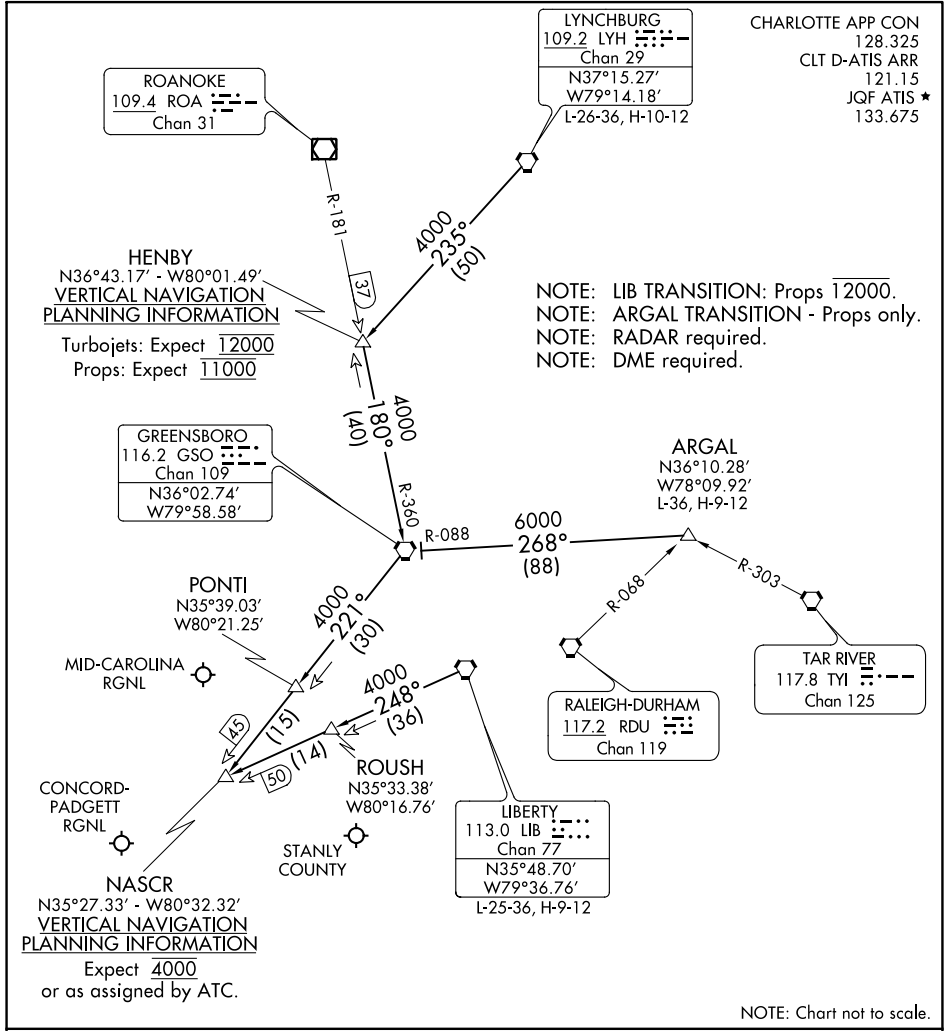
From KABEE on track 338° to BIFFL, then on track 352° to NASCR, then on heading 346°, expect RADAR vectors to final approach course.

# KABEE THREE ARRIVAL (RNAV)

CONCORD, NORTH CAROLINA

# NASCR FOUR ARRIVAL

CONCORD, NORTH CAROLINA



SE-2, 22 FEB 2024 to 21 MAR 2024

SE-2, 22 FEB 2024 to 21 MAR 2024

## ARRIVAL DESCRIPTION

**ARGAL TRANSITION (ARGAL.NASCR4):** From over ARGAL INT on GSO R-088 to GSO VORTAC then on GSO R-221 to NASCR INT. Thence. . .

**LIBERTY TRANSITION (LIB.NASCR4):** From over LIB VORTAC on LIB R-248 to NASCR INT. Thence. . .

**LYNCHBURG TRANSITION (LYH.NASCR4):** From over LYH VORTAC on LYH R-235 to HENBY INT then on GSO R-360 to GSO VORTAC then on GSO R-221 to NASCR INT. Thence. . .

. . . from over NASCR INT. Expect RADAR vectors to final approach course.

# NASCR FOUR ARRIVAL

CONCORD, NORTH CAROLINA