

WAAS CH <b>61324</b> <b>W23A</b>	APP CRS <b>226°</b>	Rwy Idg TDZE Apt Elev	<b>4000</b> <b>412</b> <b>412</b>
--	------------------------	-----------------------------	---

# RNAV (GPS) RWY 23

HANCOCK COUNTY/RON LEWIS FLD (KY8)

RNP APCH.

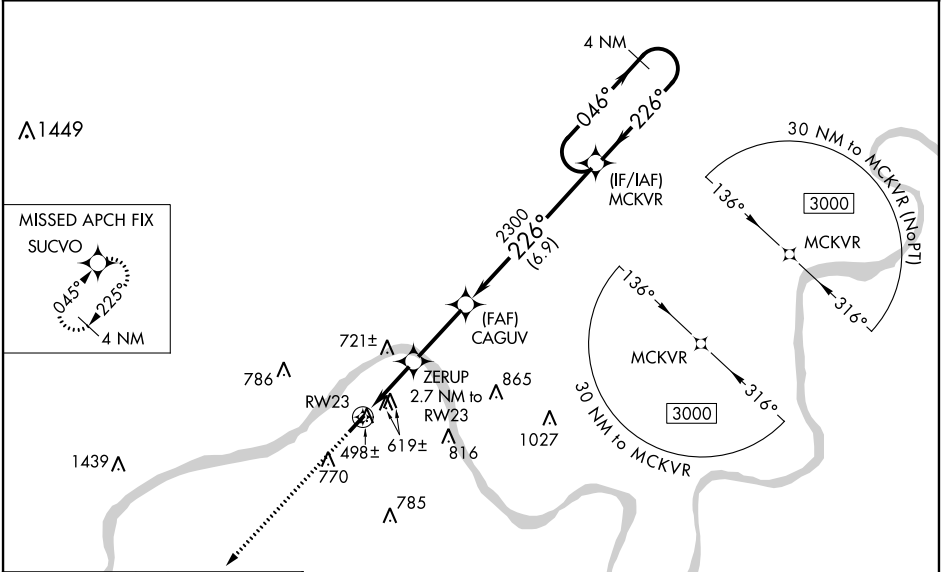
Baro-VNAV NA when using Owensboro altimeter setting. For uncompensated Baro-VNAV systems, LNAV/VNAV NA below -15°C or above 54°C. When local altimeter setting not received, use Owensboro altimeter setting and increase LPV DA to 887, LNAV/VNAV DA to 986 and all MDA 60 feet; increase LPV all Cats and LNAV Cat C visibility 1/8 mile, increase LNAV/VNAV all Cats and Circling Cat C visibility 1/4 mile. Rwy 23 helicopter visibility reduction below 3/4 SM NA.

MISSED APPROACH:  
Climb to 3000 direct  
SUCVO and hold.

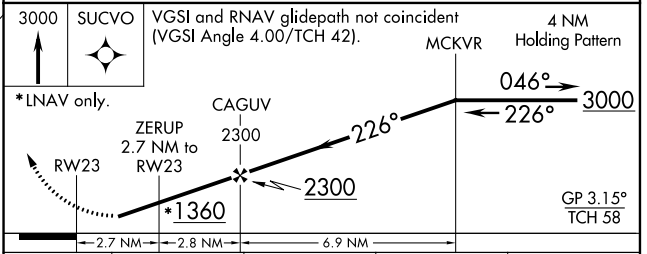
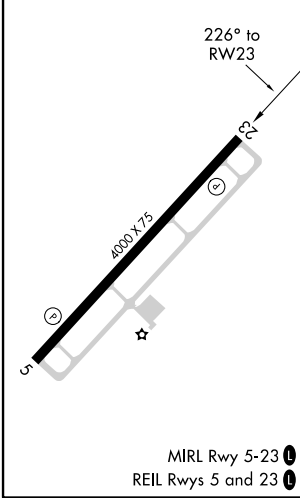
AWOS-3  
**119.775**

EVANSVILLE APP CON ★  
**124.025 290.9**

UNICOM  
**123.0 (CTAF) 0**



ELEV 412	TDZE 412
----------	----------



CATEGORY	A	B	C	D
LPV DA	841-1 3/8	429 (500-1 3/8)		NA
LNAV/VNAV DA	940-1 5/8	528 (600-1 5/8)		NA
LNAV MDA	880-1	468 (500-1)	880-1 3/8 468 (500-1 3/8)	NA
CIRCLING	980-1 568 (600-1)	1080-1 668 (700-1)	1080-1 3/4 668 (700-1 3/4)	NA

SE-1, 07 OCT 2021 to 04 NOV 2021

SE-1, 07 OCT 2021 to 04 NOV 2021

WAAS CH <b>42824</b> <b>W05A</b>	APP CRS <b>045°</b>	Rwy Idg TDZE Apt Elev	<b>4000</b> <b>411</b> <b>412</b>
--	------------------------	-----------------------------	---

**RNAV (GPS) RWY 5**  
HANCOCK COUNTY/RON LEWIS FLD (KY8)

RNP APCH.

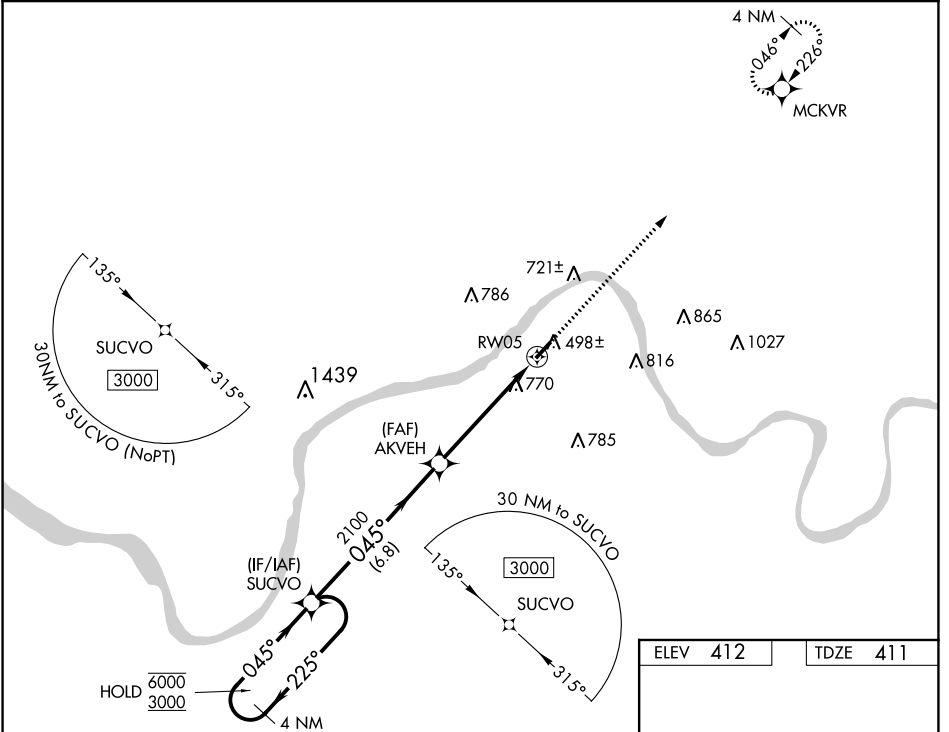
**▼** Rwy 5 helicopter visibility reduction below ¼ SM NA. When local altimeter setting not received, use Owensboro altimeter setting and increase all MDAs 60 feet; increase LP and LNAV Cat C visibility ⅛ SM and Circling Cat C visibility ¼ SM.

**MISSED APPROACH:**  
Climb to 3000 direct MCKVR and hold.

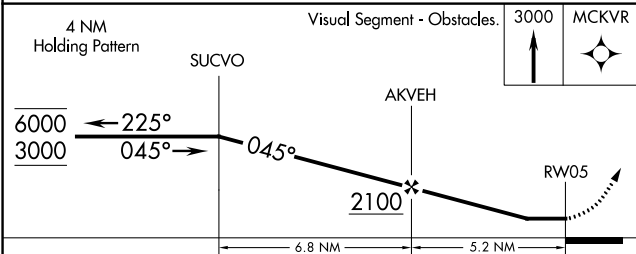
AWOS-3  
**119.775**

EVANSVILLE APP CON ★  
**124.025 290.9**

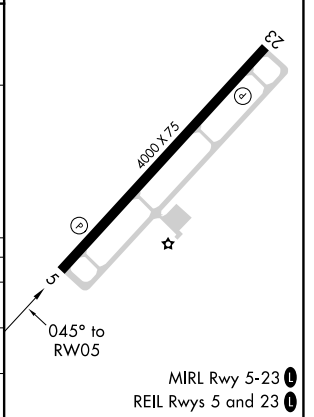
UNICOM  
**123.0 (CTAF) 0**



ELEV 412	TDZE 411
----------	----------



CATEGORY	A	B	C	D
LP MDA	1020-1	609 (700-1)	1020-1¾ 609 (700-1¾)	NA
LNAV MDA	1020-1	609 (700-1)	1020-1¾ 609 (700-1¾)	NA
CIRCLING	1020-1 608 (700-1)	1080-1 668 (700-1)	1080-1¾ 668 (700-1¾)	NA



SE-1, 07 OCT 2021 to 04 NOV 2021

SE-1, 07 OCT 2021 to 04 NOV 2021