

WAAS CH 60918 W04A	APP CRS 044°	Rwy Idg TDZE Apt Elev	7001 21 21
--	------------------------	-----------------------------	---------------------------------------

RNAV (GPS) Y RWY 4

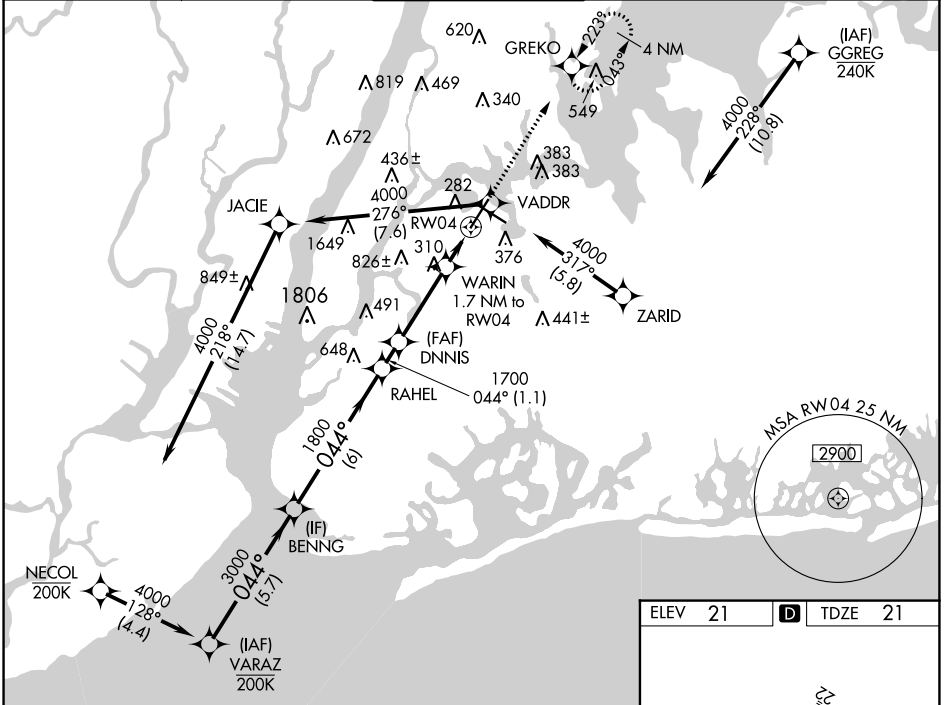
LAGUARDIA (LGA)

RNP APCH - GPS

▼ Rwy 4 helicopter visibility reduction below RVR 5000 NA. Inop table does not apply to LPV all Cats, and LNAV Cat A and B. For uncompensated Baro-VNAV systems, LNAV/VNAV NA below -12°C or above 54°C. For inop ALS, increase LNAV/VNAV all Cats visibility to 1 1/2 SM. Circling NA northwest of Rwy 4 and southwest of Rwy 13. Going below glidepath may not provide obstacle clearance inside DA. Crossing Rwy threshold below charted TCH may not provide required visual area obstacle clearance. *RVR 2400 authorized with FD or AP or HUD to DA.

MALSR	MISSED APPROACH: Climb to 2000 direct GREKO and hold, continue climb-in-hold to 2000.
-------	--

D-ATIS ARR	125.95	NEW YORK APP CON	120.8 263.0	LAGUARDIA TOWER	118.7 263.0	GND CON	121.7 263.0	CLNC DEL	135.2	CPDLC	
D-ATIS DEP	127.05										



NE-2, 22 FEB 2024 to 21 MAR 2024

NE-2, 22 FEB 2024 to 21 MAR 2024

ELEV	21	D	TDZE	21
------	----	---	------	----

