

HURCN THREE DEPARTURE (RNAV) Departure Routes
 (HURCN3.HURCN) 19MAY22
 MIAMI, FLORIDA
 MIAMI INTL (MTIA)

See following page for transition routes.



NOTE: Jet aircraft only.
 NOTE: Accelerate to 250K, if unable, advise ATC.

(CONTINUED ON FOLLOWING PAGE)

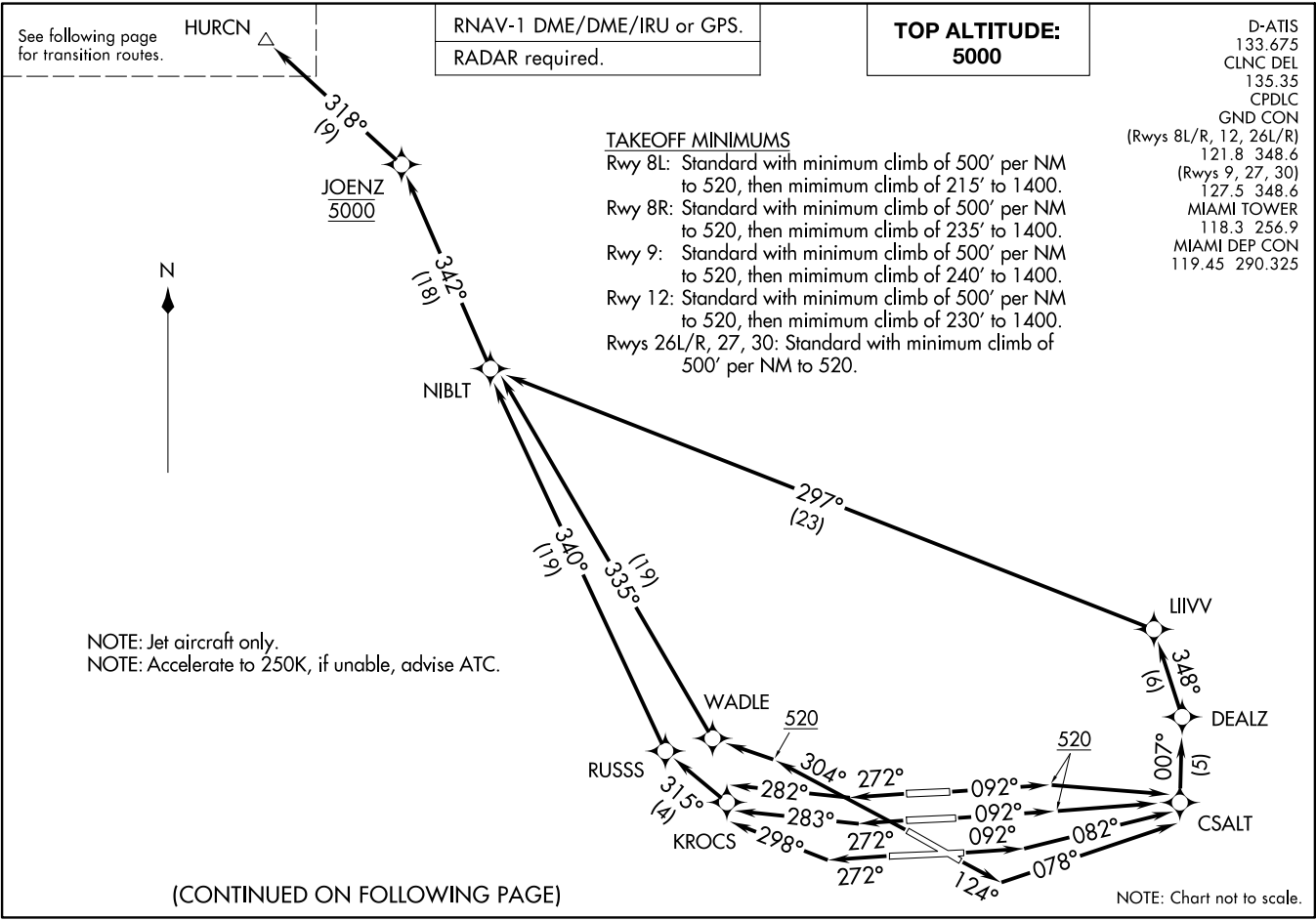
RNAV-1 DME/DME/IRU or GPS.
 RADAR required.

**TOP ALTITUDE:
 5000**

D-ATIS
 133.675
 CLNC DEL
 135.35
 CPDLC
 GND CON
 (Rwys 8L/R, 12, 26L/R)
 121.8 348.6
 (Rwys 9, 27, 30)
 127.5 348.6
 MIAMI TOWER
 118.3 256.9
 MIAMI DEP CON
 119.45 290.325

TAKEOFF MINIMUMS

- Rwy 8L: Standard with minimum climb of 500' per NM to 520, then minimum climb of 215' to 1400.
- Rwy 8R: Standard with minimum climb of 500' per NM to 520, then minimum climb of 235' to 1400.
- Rwy 9: Standard with minimum climb of 500' per NM to 520, then minimum climb of 240' to 1400.
- Rwy 12: Standard with minimum climb of 500' per NM to 520, then minimum climb of 230' to 1400.
- Rwys 26L/R, 27, 30: Standard with minimum climb of 500' per NM to 520.



NOTE: Chart not to scale.

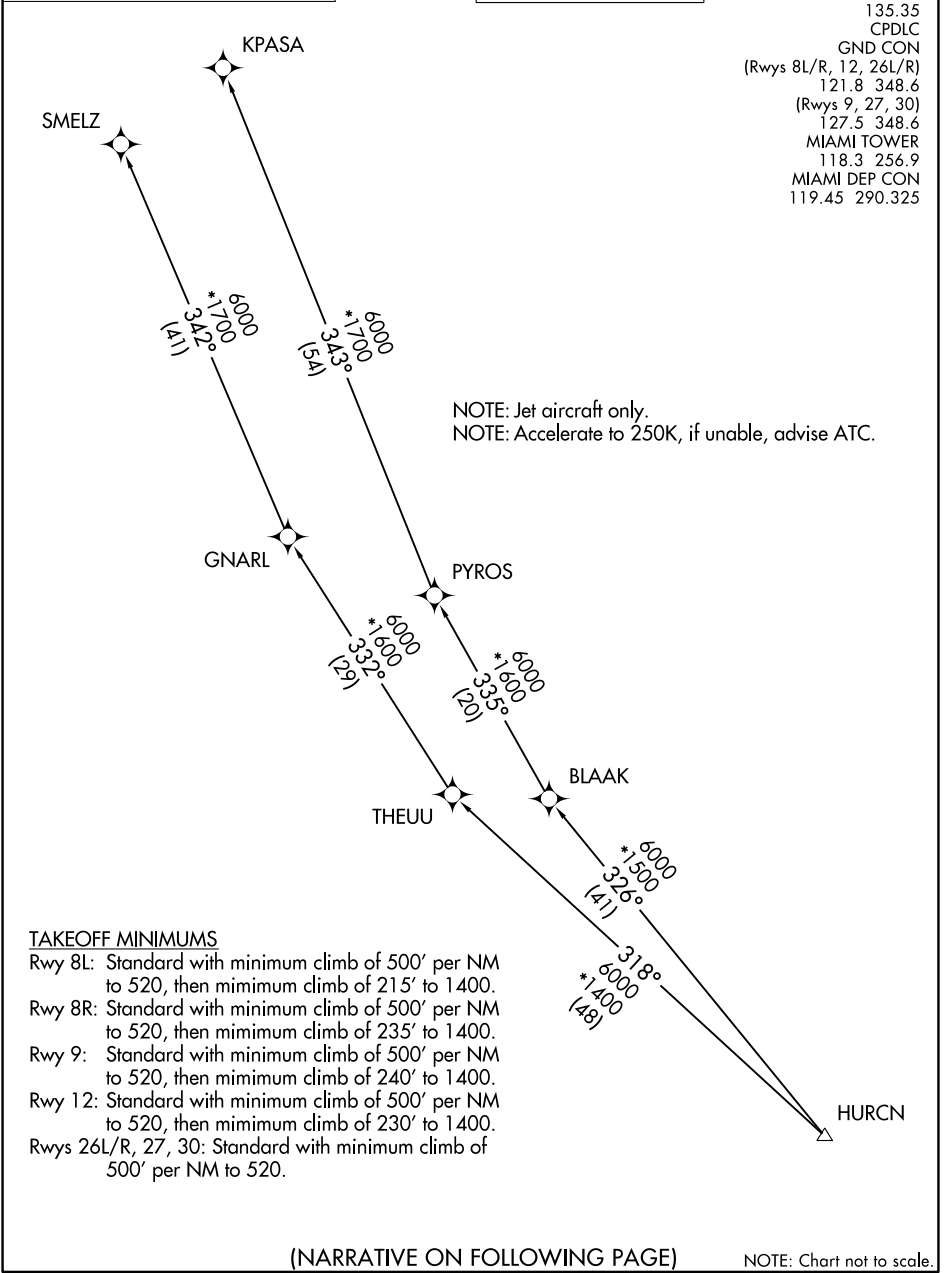
(HURCN3.HURCN) 22139
 AL-257 (FAA)
 Departure Routes
 MIAMI INTL (MTIA)
 MIAMI, FLORIDA

HURCN THREE DEPARTURE (RNAV) Transition Routes

RNAV-1 DME/DME/IRU or GPS.
RADAR required.

**TOP ALTITUDE:
5000**

D-ATIS
133.675
CLNC DEL
135.35
CPDIC
GND CON
(Rwys 8L/R, 12, 26L/R)
121.8 348.6
(Rwys 9, 27, 30)
127.5 348.6
MIAMI TOWER
118.3 256.9
MIAMI DEP CON
119.45 290.325



NOTE: Jet aircraft only.
NOTE: Accelerate to 250K, if unable, advise ATC.

SE-3, 22 FEB 2024 to 21 MAR 2024

SE-3, 22 FEB 2024 to 21 MAR 2024

TAKEOFF MINIMUMS

- Rwy 8L: Standard with minimum climb of 500' per NM to 520, then minimum climb of 215' to 1400.
- Rwy 8R: Standard with minimum climb of 500' per NM to 520, then minimum climb of 235' to 1400.
- Rwy 9: Standard with minimum climb of 500' per NM to 520, then minimum climb of 240' to 1400.
- Rwy 12: Standard with minimum climb of 500' per NM to 520, then minimum climb of 230' to 1400.
- Rwys 26L/R, 27, 30: Standard with minimum climb of 500' per NM to 520.

(NARRATIVE ON FOLLOWING PAGE)

NOTE: Chart not to scale.