

VOR/DME MKL <b>114.85</b> Chan 95 (Y)	APP CRS <b>028°</b>	Rwy Idg <b>6005</b> TDZE <b>433</b> Apt Elev <b>433</b>
---	------------------------	---

# VOR RWY 2

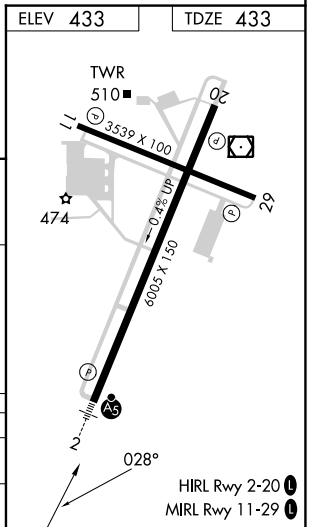
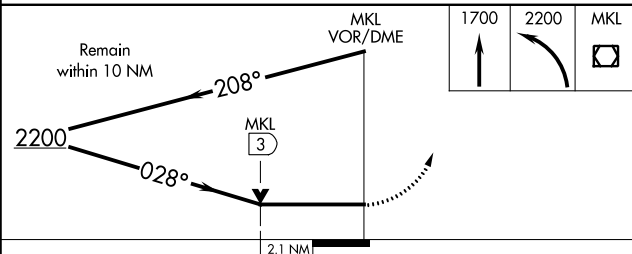
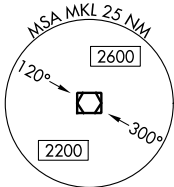
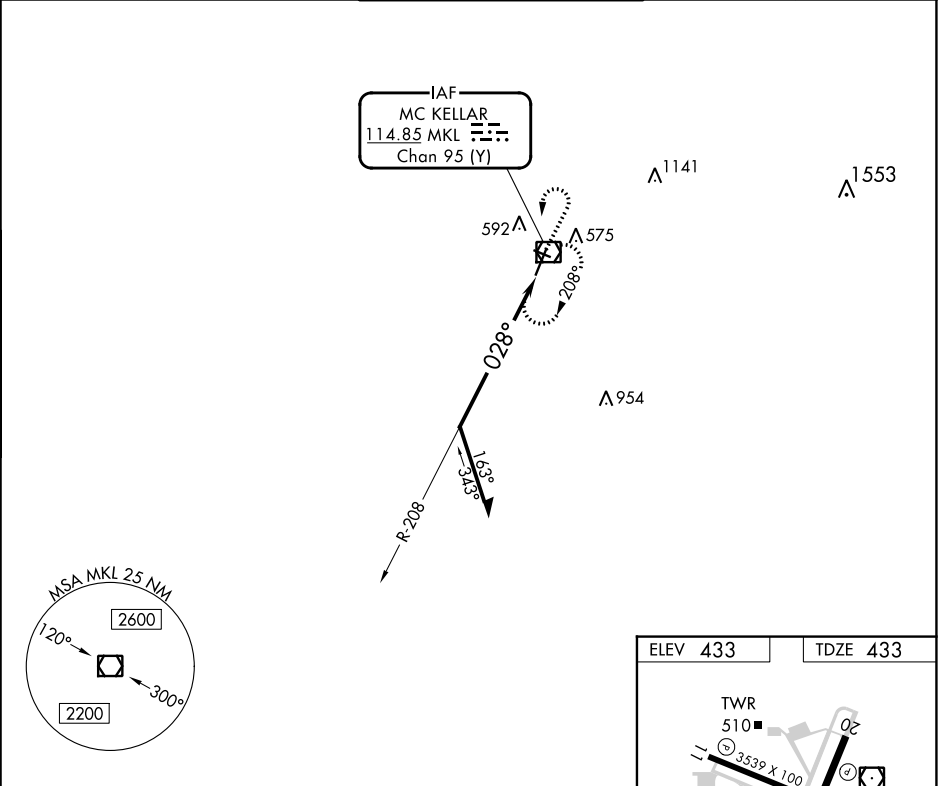
MC KELLAR-SIPES RGNL (MKL)

**⚠** Rwy 2 helicopter visibility reduction below 3/4 SM NA.  
For inop ALS, increase S-2 Cat A/B visibility to 1 SM.

**MALS**

**MISSED APPROACH:** Climb to 1700 then climbing left turn to 2200 direct MKL VOR/DME and hold, continue climb-in-hold to 2200.

ASOS <b>119.325</b>	MEMPHIS CENTER <b>134.65 316.15</b>	JACKSON TOWER ★ <b>127.15 (CTAF) 0 249.95</b>	GND CON <b>120.9</b>	UNICOM <b>122.95</b>
------------------------	--	--	-------------------------	-------------------------



CATEGORY	A	B	C	D
S-2	1120-3/4	687 (700-3/4)	1120-1 1/2	687 (700-1 1/2)
<b>C</b> CIRCLING	1120-1	687 (700-1)	1120-2	687 (700-2)
			1120-2 1/4	687 (700-2 1/4)

SE-1, 22 FEB 2024 to 21 MAR 2024

SE-1, 22 FEB 2024 to 21 MAR 2024