

SCHEP ONE DEPARTURE
(SCHEP1 .SCHEP) 08SEP22

(SCHEP1 .SCHEP) 23334
SCHEP ONE DEPARTURE

MINNEAPOLIS DEP CON
SOUTH/EAST 124.7 284.7
NORTH/WEST 125.75 284.7
D-ATIS DEP
120.8
CLNC DEL
133.2
CPDLC

**TOP ALTITUDE:
ASSIGNED BY ATC**

RADAR required.

Rwy 17
Assigned heading 230° CW 285°
3500

Rwys 30L/R
Assigned heading 220° CW 360°
3500

MINNEAPOLIS
115.3 MSP
Chan 100

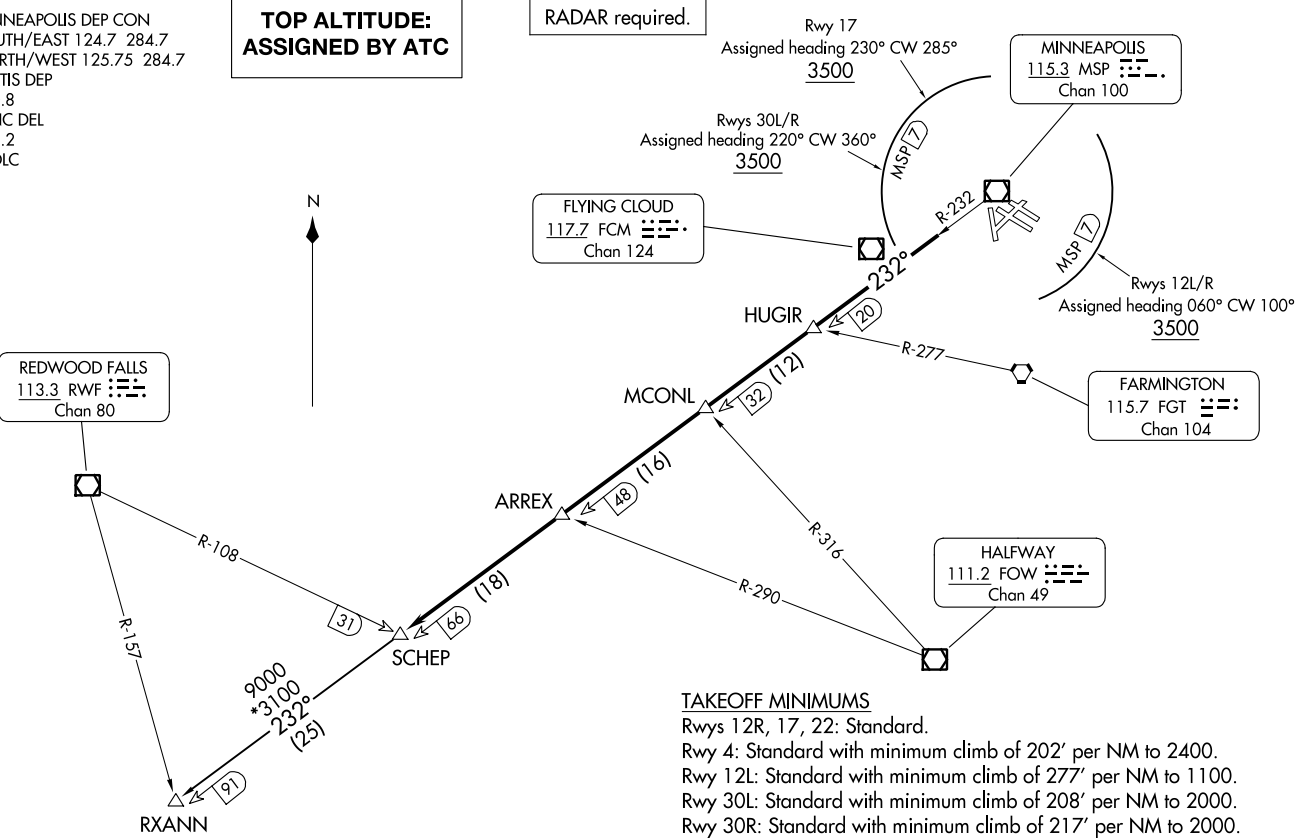
FLYING CLOUD
117.7 FCM
Chan 124

Rwys 12L/R
Assigned heading 060° CW 100°
3500

FARMINGTON
115.7 FGT
Chan 104

HALFWAY
111.2 FOW
Chan 49

REDWOOD FALLS
113.3 RWF
Chan 80



TAKEOFF MINIMUMS

- Rwys 12R, 17, 22: Standard.
- Rwy 4: Standard with minimum climb of 202' per NM to 2400.
- Rwy 12L: Standard with minimum climb of 277' per NM to 1100.
- Rwy 30L: Standard with minimum climb of 208' per NM to 2000.
- Rwy 30R: Standard with minimum climb of 217' per NM to 2000.
- Rwy 35: Standard with minimum climb of 219' per NM to 2100.

(CONTINUED ON FOLLOWING PAGE)

NOTE: Chart not to scale.

MINNEAPOLIS-ST PAUL INTL/WOLD-CHAMBERLAIN (MSP)
MINNEAPOLIS, MINNESOTA

MINNEAPOLIS-ST PAUL INTL/WOLD-CHAMBERLAIN (MSP)
MINNEAPOLIS, MINNESOTA

SCHEP ONE DEPARTURE



DEPARTURE ROUTE DESCRIPTION

TAKEOFF ALL RUNWAYS: Climb on assigned heading for RADAR vectors to assigned fix on MSP R-232, then on depicted route to SCHEP, then on transition. Maintain ATC assigned altitude. Expect filed altitude 10 minutes after departure.

ALL AIRCRAFT: ATC CROSSING RESTRICTIONS AND CLIMB GRADIENTS: If unable to accept crossing restrictions and climb rates, advise ATC prior to taxi.

RUNWAYS 12L/12R: For assigned headings from 060° clockwise to 100°, cross MSP 7 DME Arc at or above 3500, RWY 12L: 540 feet per NM to 3500, RWY 12R: 542 feet per NM to 3500.

RUNWAY 17: For assigned headings from 230° clockwise to 285°, cross MSP 7 DME Arc at or above 3500, 512 feet per NM to 3500.

RUNWAYS 30L/R: For assigned headings from 220° clockwise to 360°, cross MSP 7 DME Arc at or above 3500, 380 feet per NM to 3500.

RXANN TRANSITION (SCHEP1.RXANN): From over SCHEP INT on MSP R-232 to RXANN INT.

NC-1, 22 FEB 2024 to 21 MAR 2024

NC-1, 22 FEB 2024 to 21 MAR 2024