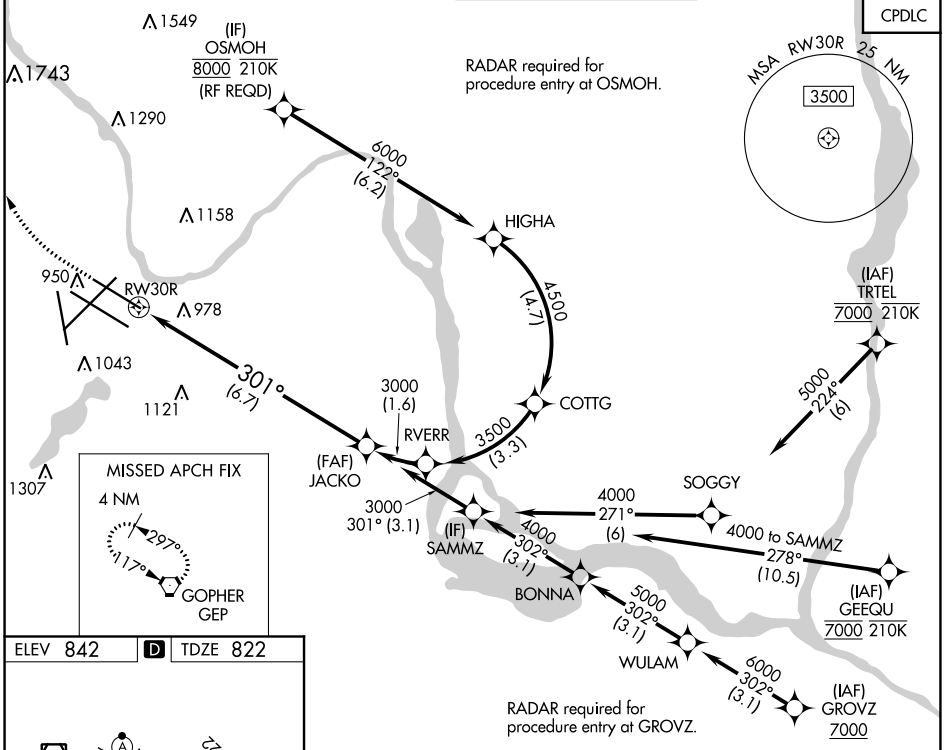


APP CRS	Rwy Idg	8000
301°	TDZE	822
	Apt Elev	842

RNAV (RNP) Y RWY 30R

MINNEAPOLIS-ST PAUL INTL/WOLD-CHAMBERLAIN (MSP)

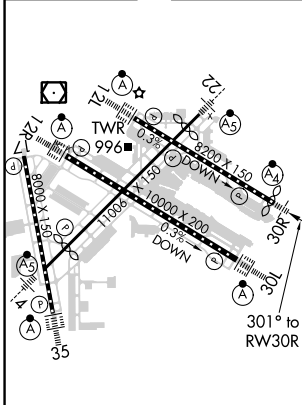
<p>▼ For uncompensated Baro-VNAV systems, procedure NA below -1°C (-2°F) or above 54°C (130°F). Simultaneous approach authorized with Rwy 30L and ILS V RWY 35 (CONVERGING). GPS required. For inop ALS, increase RNP 0.15 all Cats visibility to RVR 4500 and RNP 0.30 Cat D visibility to 1½ SM.</p>	MALSF	MISSED APPROACH: Climb to 1300 then climbing right turn to 3000 direct GEP VORTAC and hold.		
D-ATIS ARR 135.35 239.275 DEP 120.8	MINNEAPOLIS APP CON 118.725 335.65 (Rwy 35) 119.3 335.65 (12L-30R, 4-22, 17) 126.95 335.65 (12R-30L)	MINNEAPOLIS TOWER 123.675 273.55 (17-35) 123.95 273.55 (12L-30R) 126.7 273.55 (12R-30L, 4-22)	GND CON N 121.8 348.6 S 121.9 348.6 W 127.925 348.6	CLNC DEL 133.2



NC-1, 22 FEB 2024 to 21 MAR 2024

NC-1, 22 FEB 2024 to 21 MAR 2024

ELEV 842	D	TDZE 822
-----------------	----------	-----------------



HIRL all Rwys
REIL Rwy 17
TDZ/CL Rwys 12L, 12R, 30L, and 35

1300	3000	GEP	VGSI and RNAV glidepath not coincident (VGSI Angle 3.00/TCH 71). See planview for multiple IF locations.	JACKO 3000
6.7 NM				

CATEGORY	A	B	C	D
RNP 0.15 DA		1097/40	275 (300-¾)	
RNP 0.30 DA		1298-1⅞	476 (500-1⅞)	

AUTHORIZATION REQUIRED