

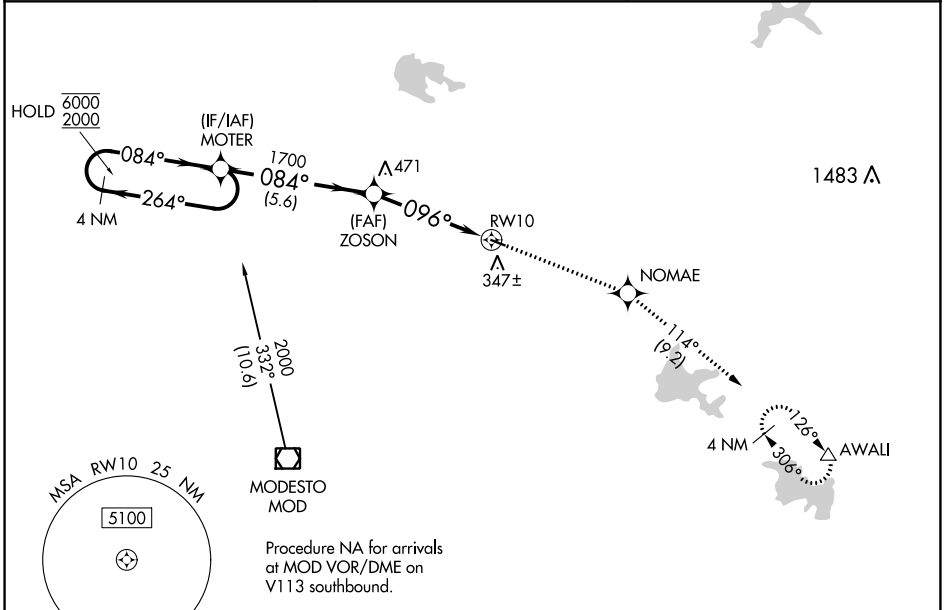
WAAS CH 42524 W10A	APP CRS 096°	Rwy Idg TDZE Apt Elev	3013 236 237
--	------------------------	-----------------------------	---

RNAV (GPS) RWY 10

OAKDALE (O27)

RNP APCH-GPS.	MISSED APPROACH: Climb to 4000 direct NOMAE and on track 114° to AWALI and hold, continue climb-in-hold to 4000.
<p>Baro-VNAV NA. Use Modesto altimeter setting; when not received, use Stockton Metro altimeter setting: increase LPV DA to 627 feet and all visibilities 1/8 SM; increase LNAV/VNAV DA to 588 feet and all visibilities 1/8 SM; increase all MDAs 40 feet and LNAV Cat C visibility 1/8 SM.</p>	

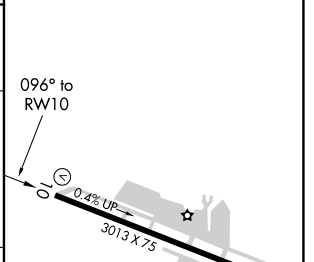
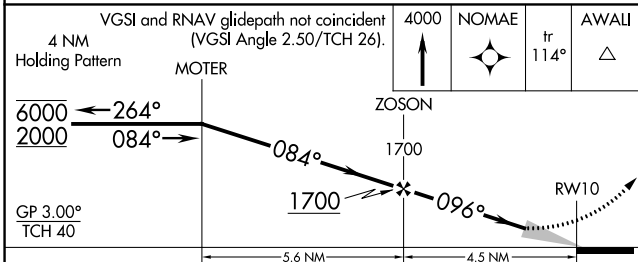
MOD ASOS 127.7	NORCAL APP CON 125.1 363.2	UNICOM 122.8 (CTAF)
--------------------------	--------------------------------------	-------------------------------



SW-2, 22 FEB 2024 to 21 MAR 2024

SW-2, 22 FEB 2024 to 21 MAR 2024

ELEV 237	TDZE 236
----------	----------



CATEGORY	A	B	C	D
LPV DA	593-1 357 (400-1)			NA
LNAV/VNAV DA	554-7/8 318 (400-7/8)			NA
LNAV MDA	760-1	524 (600-1)	760-1 1/2 524 (600-1 1/2)	NA
CIRCLING	760-1 523 (600-1)	820-1 583 (600-1)	920-2 683 (700-2)	NA

REIL Rwy 10 and 28	MIRL Rwy 10-28
--------------------	----------------

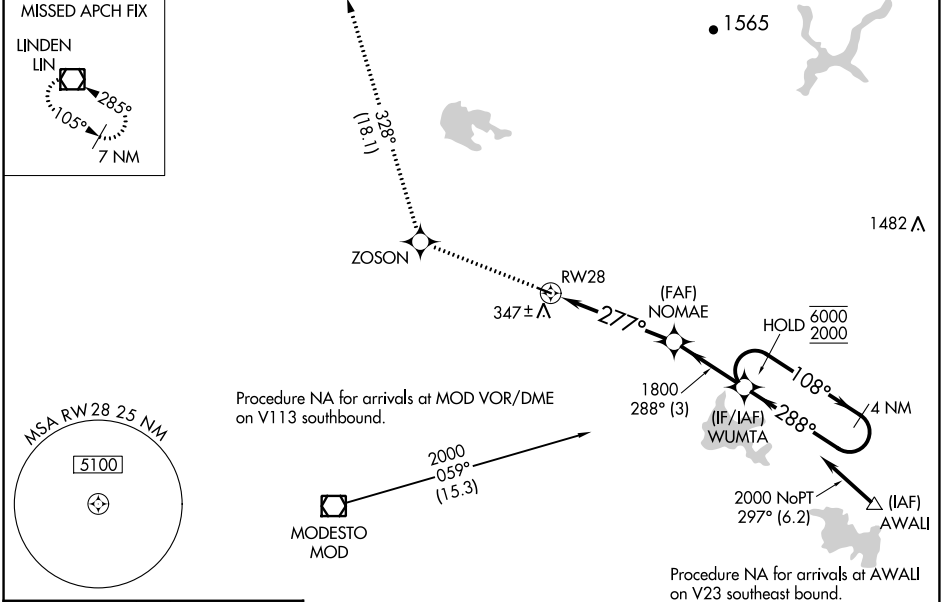
WAAS CH 70523 W28A	APP CRS 277°	Rwy Idg 3013 TDZE 237 Apt Elev 237
--	------------------------	---

RNAV (GPS) RWY 28

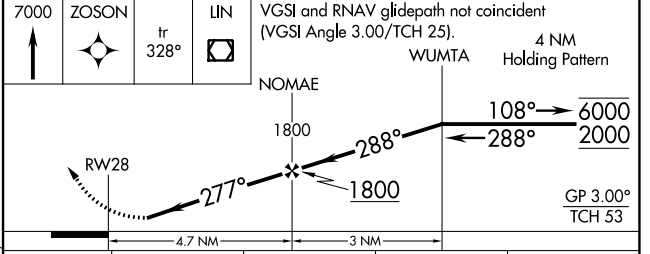
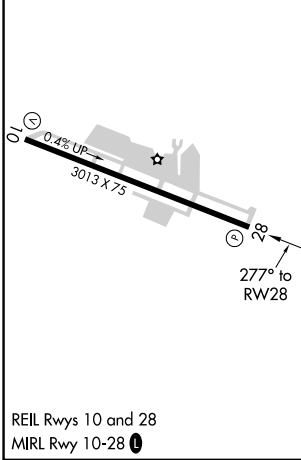
OAKDALE (O27)

RNP APCH-GPS.	<p>▼ Rwy 28 helicopter visibility reduction below ¼ SM NA. Baro-VNAV NA. ▲ NA Use Modesto altimeter setting; when not received, use Stockton altimeter setting; increase LPV DA to 581 feet and all visibilities ⅛ SM; increase LNAV/VNAV DA to 728 feet; increase all MDAs 40 feet.</p>	<p>MISSED APPROACH: Climb to 7000 direct ZOSON and on track 328° to LIN VOR/DME and hold, continue climb-in-hold to 7000.</p>
---------------	---	---

MOD ASOS 127.7	NORCAL APP CON 125.1 363.2	UNICOM 122.8 (CTAF) 0
--------------------------	--------------------------------------	---------------------------------



ELEV 237	TDZE 237
----------	----------



CATEGORY	A	B	C	D
LPV DA	547-7/8	310 (400-7/8)		NA
LNAV/VNAV DA	694-13/8	457 (500-13/8)		NA
LNAV MDA	820-1	583 (600-1)	820-13/4 583 (600-13/4)	NA
CIRCLING	820-1	583 (600-1)	920-2 683 (700-2)	NA

SW-2, 22 FEB 2024 to 21 MAR 2024

SW-2, 22 FEB 2024 to 21 MAR 2024

OAKDALE, CALIFORNIA

AL-6135 (FAA)

20310

VOR/DME MOD 114.6 Chan 93	APP CRS 027°	Rwy Idg TDZE N/A Apt Elev N/A 237
---	------------------------	--

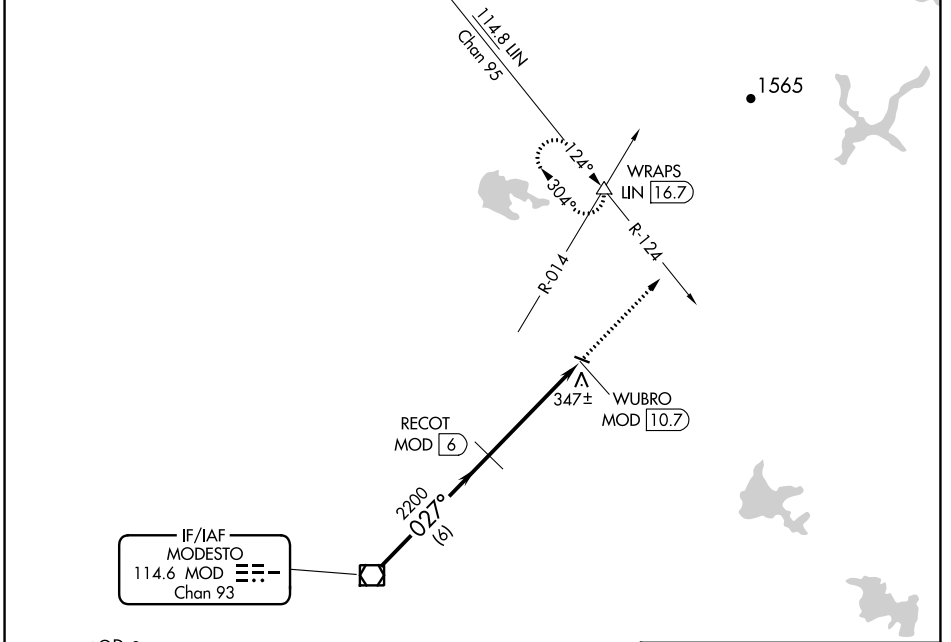
VOR-A

OAKDALE (O27)

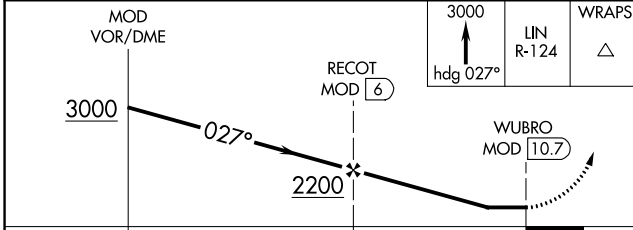
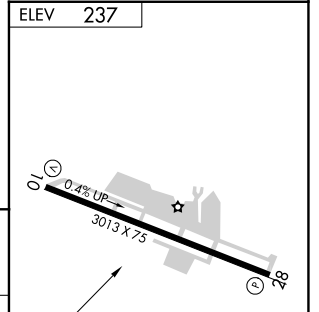
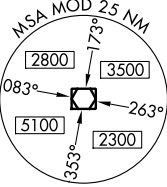
▼ DME required.
▲NA Use Modesto altimeter setting, when not received, use Stockton altimeter setting and increase all MDA 40 feet.

MISSED APPROACH: Climb to 3000 on heading 027° and LIN R-124 to WRAPS INT/LIN 16.7 DME and hold, continue climb-in-hold to 3000.

MOD ASOS 127.7	NORCAL APP CON 125.1 363.2	UNICOM 122.8 (CTAF)
--------------------------	--------------------------------------	-------------------------------



IF/IAF
 MODESTO
 114.6 MOD Chan 93



CATEGORY	A	B	C	D
C CIRCLING	820-1	583 (600-1)	920-2 683 (700-2)	NA

ELEV 237

REIL Rwy 10 and 28
 MRL Rwy 10-28 **⓪**

SW-2, 22 FEB 2024 to 21 MAR 2024

SW-2, 22 FEB 2024 to 21 MAR 2024

OAKDALE, CALIFORNIA
 Amdt 1 22JUN17

37°45'N-120°48'W

OAKDALE (O27)

VOR-A