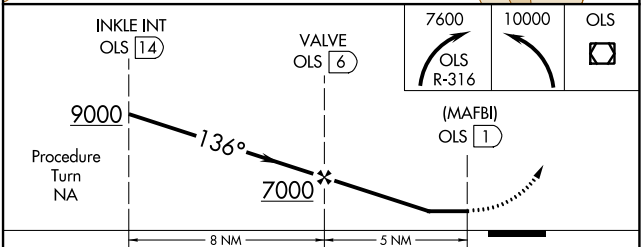
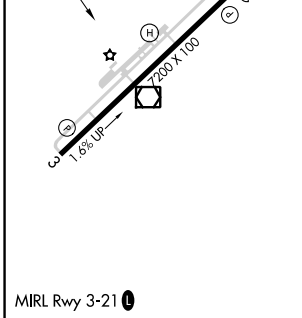
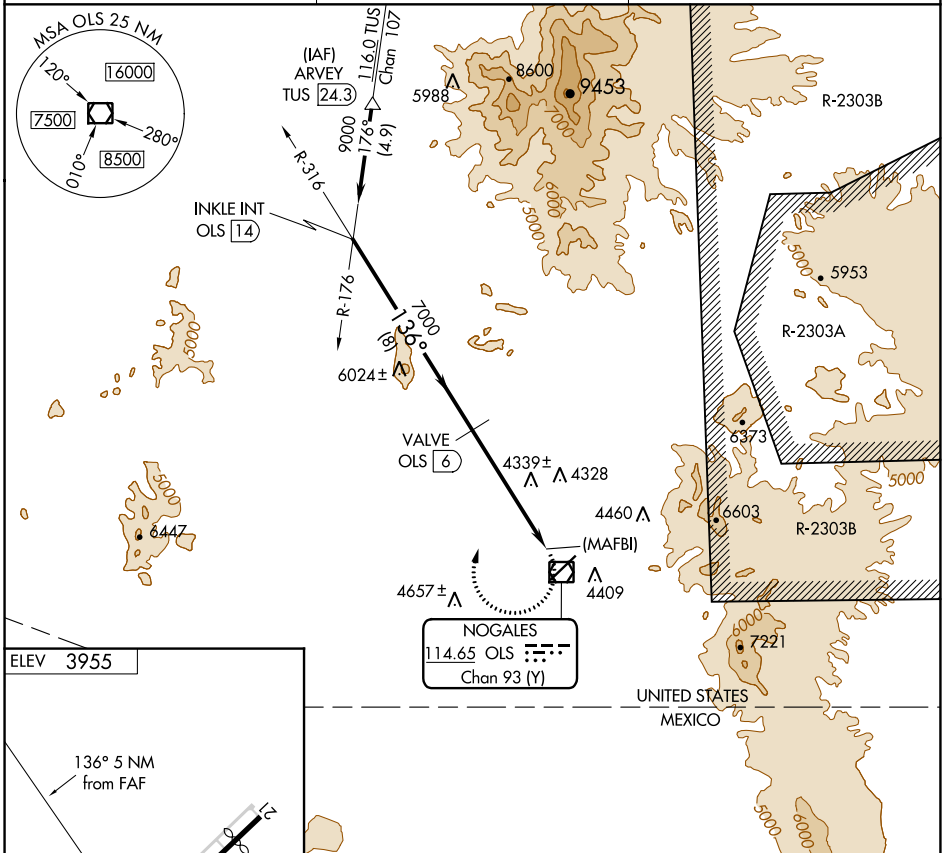


VOR/DME OLS <b>114.65</b> Chan <b>93 (Y)</b>	APP CRS <b>136°</b>	Rwy Idg TDZE Apt Elev <b>N/A</b> <b>N/A</b> <b>3955</b>
--	------------------------	--

VOR/DME or GPS-B  
NOGALES INTL (OLS)

<p><b>▼</b> Night landing Rwy 21 NA. <b>▲</b> NA Helicopter visibility reduction below 1 SM not authorized. When local altimeter setting not received, procedure NA.</p>	<p>MISSED APPROACH: Climbing right turn to 7600 via OLS R-316 then climbing left turn to 10000 direct OLS VOR/DME.</p>
--	--

ASOS <b>121.125</b>	TUCSON APP CON <b>118.75 269.55</b>	UNICOM <b>122.8 (CTAF)</b>
------------------------	--	-------------------------------



CATEGORY	A	B	C	D
CIRCLING	5200-1¼ 1245 (1300-1¼)	5200-1½ 1245 (1300-1½)	5460-3 1505 (1600-3)	6860-3 2905 (3000-3)

SW-4, 22 FEB 2024 to 21 MAR 2024

SW-4, 22 FEB 2024 to 21 MAR 2024