

WAAS CH <b>49008</b> <b>W05A</b>	APP CRS <b>045°</b>	Rwy Idg TDZE Apt Elev	<b>5502</b> <b>18</b> <b>18</b>
--	------------------------	-----------------------------	---------------------------------------

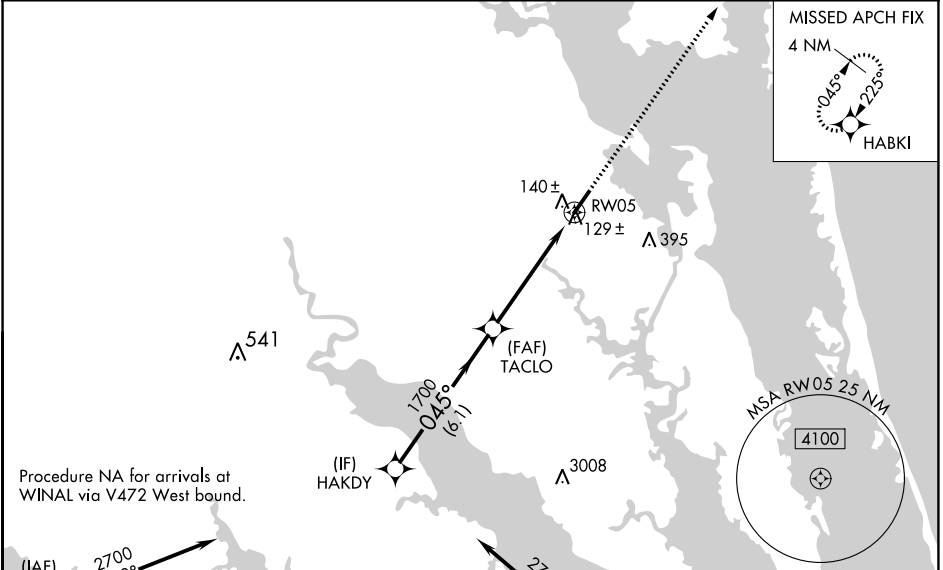
# RNAV (GPS) RWY 5

CURRITUCK COUNTY RGNL (ONX)

**⚠** Baro-VNAV NA when using Oceana NAS/Apollo Soucek altimeter setting. For uncompensated Baro-VNAV systems, LNAV/VNAV NA below -15°C (5°F) or above 49°C (120°F). DME/DME RNP-0.3 NA. Visibility reduction by helicopters NA. Procedure NA when tethered balloon located approximately 11.4 NM southwest of airport is flying. When local altimeter setting not received, use Oceana NAS/Apollo Soucek altimeter setting and increase all DA 59 feet, and all MDA 60 feet; increase LNAV Cat. C and D visibility ¼ mile.

**MISSED APPROACH:**  
Climb to 2000 direct HABKI and hold.

AWOS-3 <b>119.775</b>	OCEANA APP CON <b>123.9 266.8</b>	CTAF <b>122.90</b>
--------------------------	--------------------------------------	-----------------------



Procedure NA for arrivals at WINAL via V472 West bound.

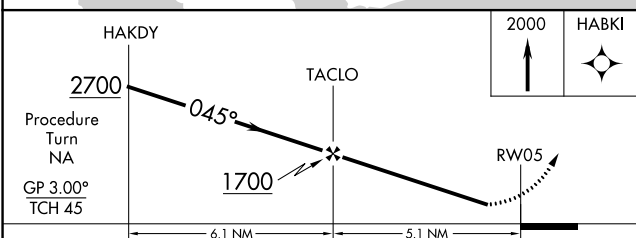
(IAF) WINAL 2700  
078°  
(14.3)

Procedure NA for arrivals at OCSIP via V266 Southeast bound.

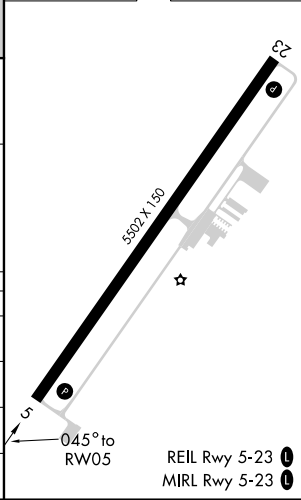
(IAF) OCSIP 2700  
321°  
(9.5)



ELEV 18	TDZE 18
---------	---------



CATEGORY	A	B	C	D
LPV DA		343-1¼	325 (400-1¼)	
LNAV/VNAV DA		410-1½	392 (400-1½)	
LNAV MDA	400-1	382 (400-1)		400-1¼ 382 (400-1¼)
CIRCLING	440-1 422 (500-1)	480-1 462 (500-1)	480-1½ 462 (500-1½)	760-2½ 742 (800-2½)



REIL Rwy 5-23  
MIRL Rwy 5-23

SE-2, 22 FEB 2024 to 21 MAR 2024

SE-2, 22 FEB 2024 to 21 MAR 2024