

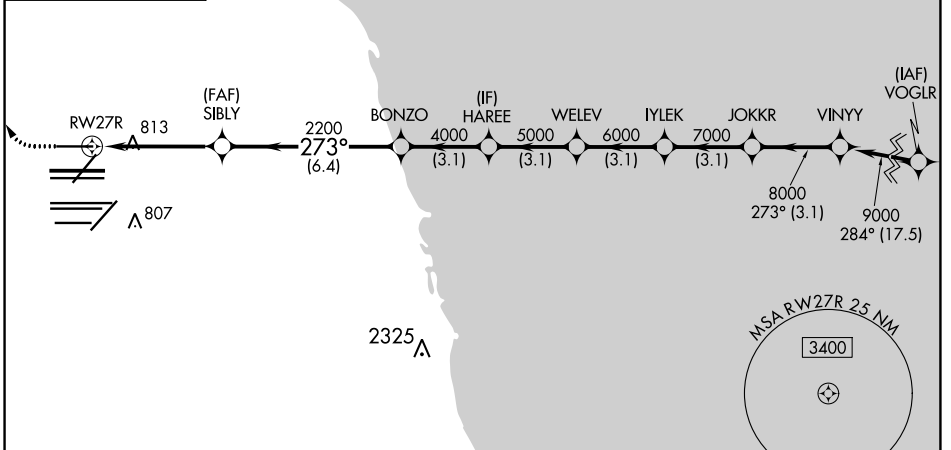
WAAS CH 69508 W27B	APP CRS 273°	Rwy Idg TDZE 664 Apt Elev 680
--	------------------------	---

RNAV (GPS) RWY 27R

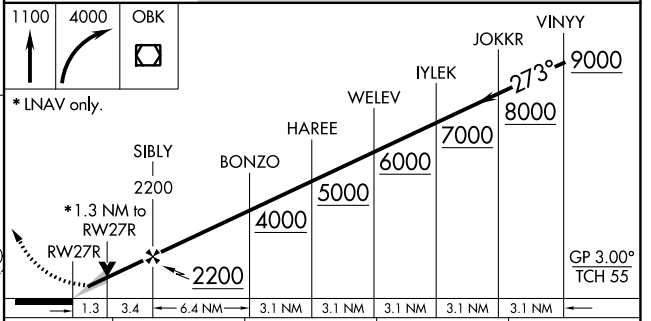
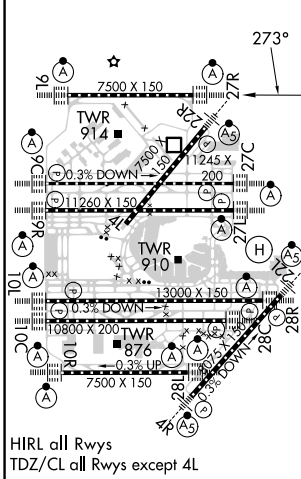
CHICAGO O'HARE INTL (ORD)

RNP APCH. RADAR required for procedure entry.	ALSIF-2	MISSED APPROACH: Climb to 1100 then climbing right turn to 4000 direct OBK VOR/DME and hold, continue climb-in-hold to 4000.
Simultaneous approach authorized. LNAV procedure NA during simultaneous operations. Use of FD or AP providing RNAV track guidance required during simultaneous operations. For uncompensated Baro-VNAV systems, procedure NA below -1°C or above 54°C.		

D-ATIS 135.4 282.225	CHICAGO APP CON 119.0 292.125	O'HARE TOWER 128.15 348.0	GND CON (TWR NORTH) 124.125 (TWR SOUTH) 118.05 226.675 (ALL TWRs)	(TWR CENTER) (OBND) 121.75 (IBND) 121.9	CLNC DEL 121.6	CPDLC
--	---	-------------------------------------	---	---	--------------------------	-------



ELEV 680	D	TDZE 664
----------	----------	----------



CATEGORY	A	B	C	D
LPV DA		864/18	200 (200-½)	
LNAV/VNAV DA		961/24	297 (300-½)	
LNAV MDA	1120/24	456 (500-½)	1120/45	456 (500-¾)