

LOC/DME F-ADQ 110.9 Chan 46	APP CRS 258°	Rwy Idg 7534 TDZE 32 Apt Elev 79
---	------------------------	---

ILS Y or LOC Y RWY 26

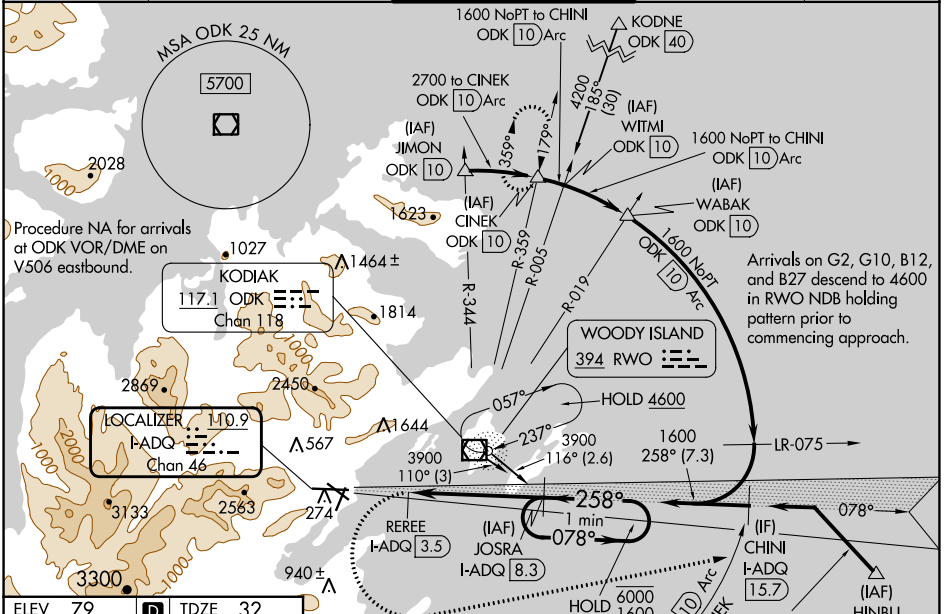
KODIAK (ADQ)(PADQ)

DME required.

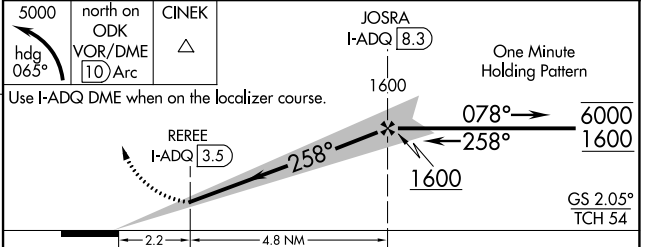
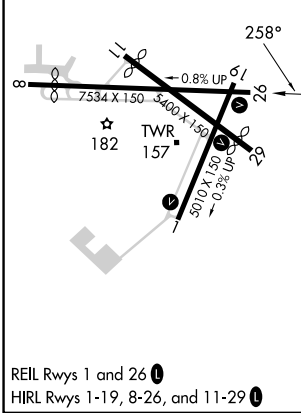
▼ Circling NA north of Rwy 8-26 and west of Rwy 1-19. Circling Rwy 1 NA at night.
▲ Circling NA to Rws 8, 11 and 19. Rapidly rising terrain north, west, and south of airport. ILS unusable from 2 DME inbound. When advised by ATC of tall ships in the harbor, procedure NA.

MISSED APPROACH: Climbing left turn to 5000 on heading 065° to intercept ODK VOR/DME 10 DME Arc. Arc north to CINEK/ODK 10 DME Arc and hold

ATIS 134.45	ANCHORAGE CENTER 125.1 281.4	KODIAK TOWER* 119.8 (CTAF) 239.0	GND CON 121.9	UNICOM 122.8
-----------------------	--	--	-------------------------	------------------------



ELEV 79	D	TDZE 32
---------	----------	---------



CATEGORY	A	B	C	D
S-ILS 26	636-3	604 (600-3)		824-3 792 (800-3)
S-LOC 26	640-2½	608 (600-2½)		1060-3 1028 (1000-3)
C CIRCLING	660-2½ 581 (600-2½)	720-2½ 641 (700-2½)	1140-3 1061 (1100-3)	NA

AK, 25 JAN 2024 to 21 MAR 2024

AK, 25 JAN 2024 to 21 MAR 2024

KODIAK, ALASKA

AL-1238 (FAA)

22195

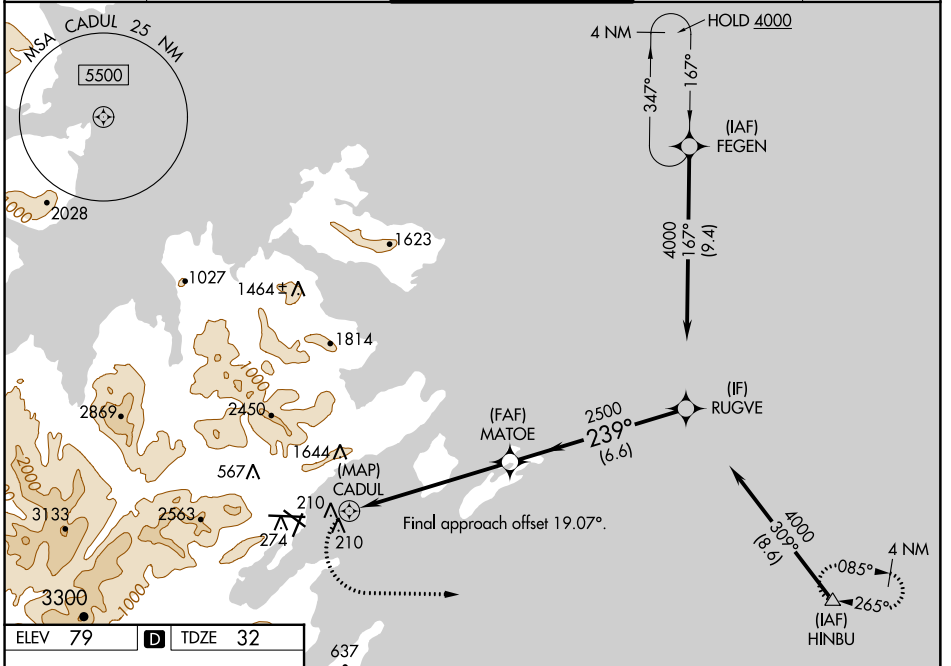
WAAS CH 93941 W26A	APP CRS 239°	Rwy Idg 7534 TDZE 32 Apt Elev 79
--	------------------------	---

RNAV (GPS) RWY 26

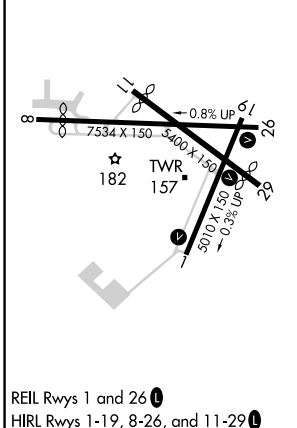
KODIAK (ADQ)(PADQ)

RNP APCH. MISSED APPROACH: (Do not exceed 210K until HINBU)
 Circling NA north of Rwy 8-26 and west of Rwy 1-19. Climbing left turn to 4000 direct HINBU and hold, continue
 Procedure NA at night. Circling to Rwy 8, 11 and 19 NA. climb-in-hold to 4000. *Missed approach requires minimum
 Rapidly rising terrain north, west, and south of airport. climb of 357 feet per NM to 1500.

ATIS 134.45	ANCHORAGE CENTER 125.1 281.4	KODIAK TOWER * 119.8 (CTAF) 239.0	GND CON 121.9	UNICOM 122.8
-----------------------	--	---	-------------------------	------------------------



ELEV 79	D	TDZE 32
----------------	----------	----------------



REIL Rwy 1 and 26
 HIRL Rwy 1-19, 8-26, and 11-29

4000	HINBU	VGSi and descent angles not coincident (VGSi Angle 2.05/TCH 54).			
CATEGORY	A	B	C	D	
LP MDA	560-1 $\frac{7}{8}$		528 (500-1 $\frac{7}{8}$)		
LNAV MDA*	560-1 $\frac{7}{8}$		528 (500-1 $\frac{7}{8}$)		
LNAV MDA	940-1 $\frac{7}{8}$	908 (900-1 $\frac{7}{8}$)	940-2 $\frac{1}{2}$	908 (900-2 $\frac{1}{2}$)	
C CIRCLING	940-1 $\frac{7}{8}$	861 (900-1 $\frac{7}{8}$)	1140-3 1060 (1100-3)	2020-3 1941 (2000-3)	

KODIAK, ALASKA
 Amdt 3A 20JUN19

57°45'N-152°30'W

RNAV (GPS) RWY 26

AK, 25 JAN 2024 to 21 MAR 2024

AK, 25 JAN 2024 to 21 MAR 2024

VOR/DME ODK 117.1 Chan 118	APP CRS 237°	Rwy Idg 7534 TDZE 32 Apt Elev 79
--	------------------------	---

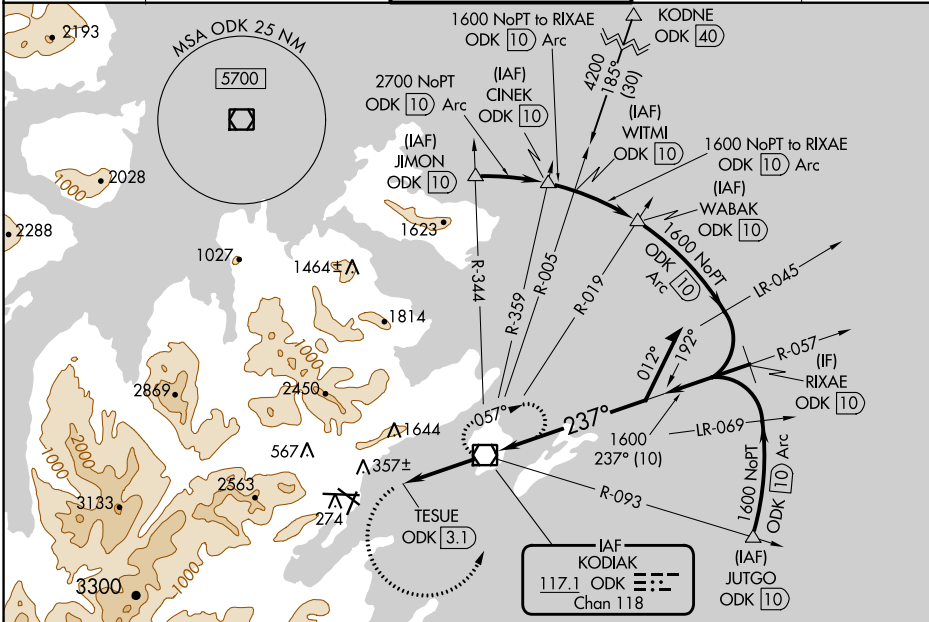
VOR RWY 26

KODIAK (ADQ)(PADQ)

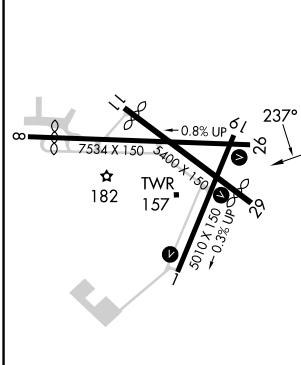
⚠ Circling NA north of Rwy 8-26 and west of Rwy 1-19.
⚠ Circling Rwy 1 NA at night. Circling NA to Rwys 8, 11 and 19.
 Rapidly rising terrain north, west, and south of airport.

MISSED APPROACH: Climbing left turn to 3700 on heading 079° then left turn direct ODK VOR/DME and hold.

ATIS 134.45	ANCHORAGE CENTER 125.1 281.4	KODIAK TOWER* 119.8 (CTAF) 239.0	GND CON 121.9	UNICOM 122.8
-----------------------	--	--	-------------------------	------------------------



ELEV 79	D	TDZE 32
---------	----------	---------



REIL Rwys 1 and 26
 HIRL Rwys 1-19, 8-26, and 11-29
 FAF to MAP 3.1 NM

Knots	60	90	120	150	180
Min:Sec	3:06	2:04	1:33	1:14	1:02

ODK	VGSIs and descent angles not coincident (VGSIs Angle 2.05/TCH 54)
ODK	Remain within 10 NM
ODK	3700
ODK	4000
ODK	3600
ODK	1600
ODK	057°
ODK	237°
ODK	3.03° TCH 55
ODK	TESUE ODK 3.1
ODK	1.6 NM
ODK	1.1 NM
ODK	2 NM

CATEGORY	A	B	C	D
S-26	660-2 628 (600-2)			
C CIRCLING	660-2 581 (600-2)	720-2 641 (700-2)	1140-3 1061 (1100-3)	NA

AK, 25 JAN 2024 to 21 MAR 2024

AK, 25 JAN 2024 to 21 MAR 2024