

ILS X RWY 6 (SA CAT I)

EMENDORF AFB (PAED)

LOC I-EDF 110.3	APCH CRS 062°	Req'd Idg TDZE Elev App'l Elev	10,000 175 213
---------------------------	-------------------------	--------------------------------------	---

[USAF]

DME required
Requires MAJCOM flying authority approval and use of HUD to DA.

ALSF-1 

MISSED APPROACH: Climb to 900, then climbing left turn to 3000 via EDF R-307 to HOBBS and hold.

ANCHORAGE APP CON	ATIS ★	124.3 273.5	118.6 290.5	123.8 259.3	North South
-------------------	--------	--------------------	--------------------	--------------------	----------------

TOWER	127.2 352.05
-------	---------------------

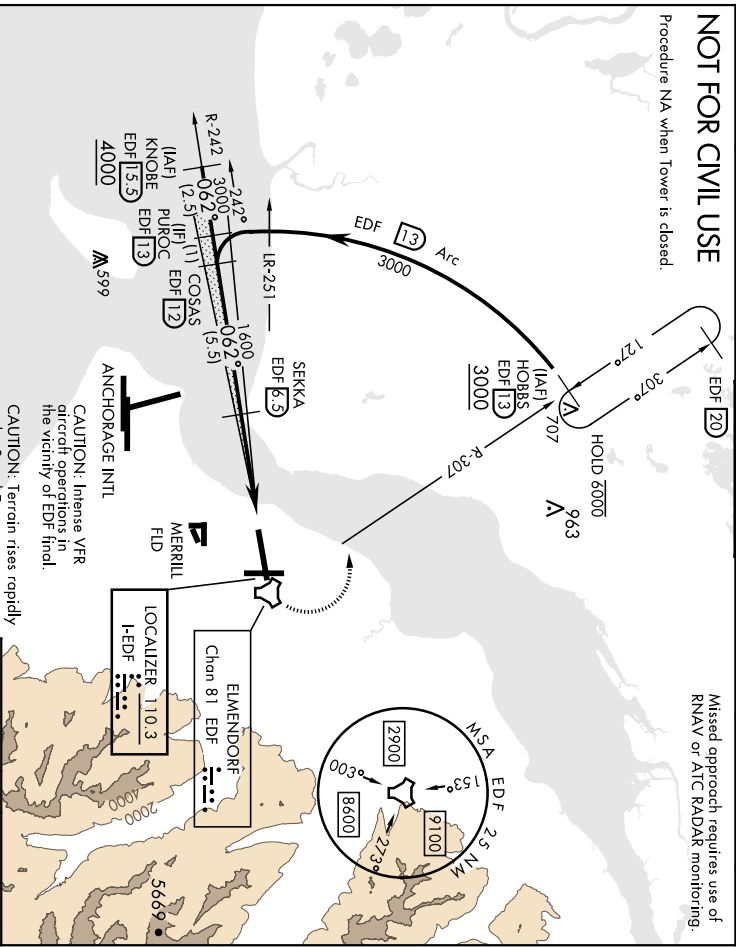
GND CON	121.8 275.8
---------	--------------------

CINC DEL	128.8 306.925
PAR	

NOT FOR CIVIL USE

Procedure NA when Tower is closed.

Misled approach requires use of RNAV or ATIS RADAR monitoring.



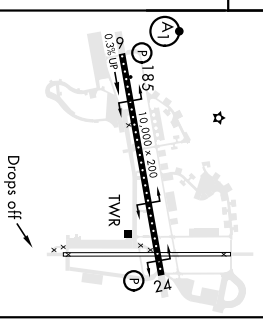
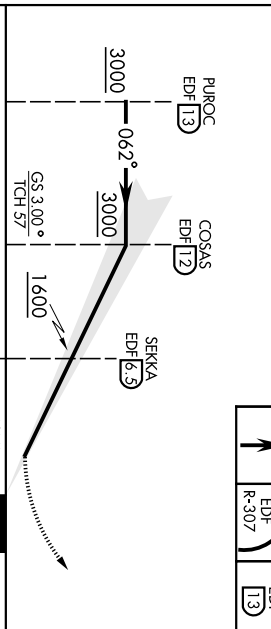
CAUTION: Intense VFR aircraft operations in the vicinity of EDF Int'l.
CAUTION: Terrain rises rapidly to the S and E.

900	3000	HOBBS
EDF	EDF	EDF
R-307		I 13

ELEV	213	TDZE	175
------	-----	------	-----

EMERG SAFE ALT 100 NM 15,300

VGSI and ILS glidepath not coincident
(VGSi Angle 3.00/TCH 77).



CATEGORY	A	B	C	D
S-ILS 6	RA 138/14	150	DA 325	

HIRL Rwy 6-24
TDZL/Ct Rwy 6

ANCHORAGE, ALASKA

61° 15' N - 149° 48' W

ELMENDORF AFB (PAED)

ILS X RWY 6 (SA CAT I)

Orig 12AUG21

LOC I-EDF	APCH CRS	Fix/Deg	10,000
110.3	062°	TDZE	174
		Appt Elev	213

[USAF]

ELMENDORF AFB (PAED)

▲ * When TDZ/CL Inpts inop increase RVR to 24. When ALS Inop, increase RVR to 40, vis to ½ mile.



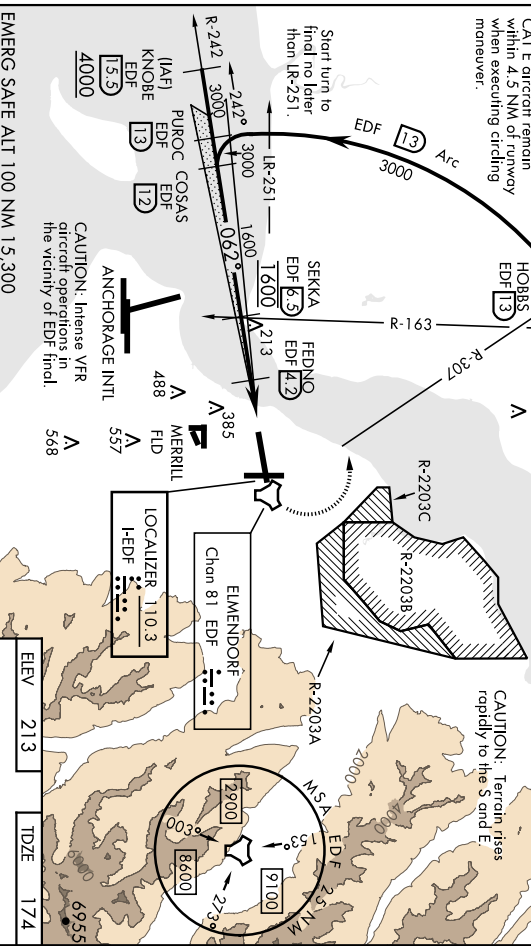
MISSED APPROACH: Climb to 900, then climbing left turn to 3000 via EDF R-307 to HOBBS and hold.

ATIS *	ANCHORAGE APP CON	TOWER	127.2 352.05
124.3 273.5	118.6 290.5 (N) 123.8 259.3 (S)	GND CON	121.8 275.8
		CLNC DEL	128.8 306.925
		PAR	

****** When ALS inop, increase CAT AB RVR to 35, vis to 1 mile, CAT CDE vis to 1½ miles.
****** Circling not authorized S of Rwy 6-24.
****** Circling not authorized SW of Rwy 6 and 34.
******** Circling not authorized CAT E aircraft remain within 4.5 NM of runway when executing circling maneuver.

Missed approach requires use of RNAV or ATC RADAR monitoring.

CAUTION: Terrain rises greater than descent gradient between SEKKA and FEDNO.

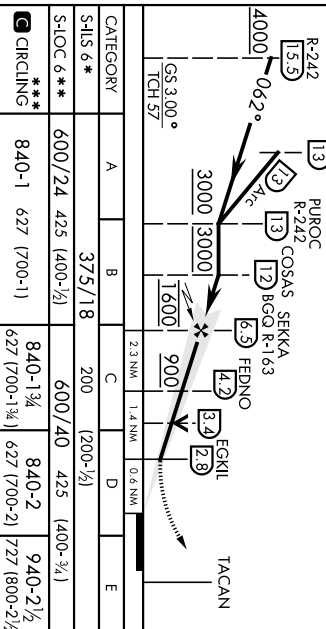


EMERG SAFE ALT 100 NM 15,300

VGSI and ILS glidepath not coincident (VGSI Angle 3.00/TCH 77).

900	3000	HOBBS
EDF	EDF	EDF
R-307	R-307	13

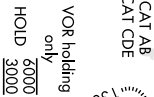
ELEV	213	TDZE	174
	439		398



LOC I-EDF 110.3	APCH CRS 062°	Rwy/Ldg TDZE 1174 App'l Elev. 213	[USAF]	ALSF-I-1 A1	MISSED APPROACH: Climb to 900, then climbing left turn to 3000 and intercept BQG R-138 to BQG and hold.
ATIS ★ 124.3 273.5	ANCHORAGE APP CON 118.6 290.5 (N) 123.8 259.3 (S)	TOWER 127.2 352.05	GND CON 121.8 275.8	CINC DEL 128.8 306.925	PAR

▲ *When TDZ/CL lights inop increase RVR to 24.
When ALS inop, increase RVR to 40, vis to ½ mile.

** When ALS inop, increase CAT AB RVR to 55, vis to 1 mile, CAT CDE vis to 1½ miles.
*** Circling not authorized S of Rwy 6-24.
**** Circling not authorized SW of Rwy 6 and 34.



EDF DME available on 113.4

CAUTION: Descent gradient after FEDNO is greater than descent gradient between SEKKA to FEDNO.

CAUTION: Intense VFR aircraft operations in the vicinity of EDF final.

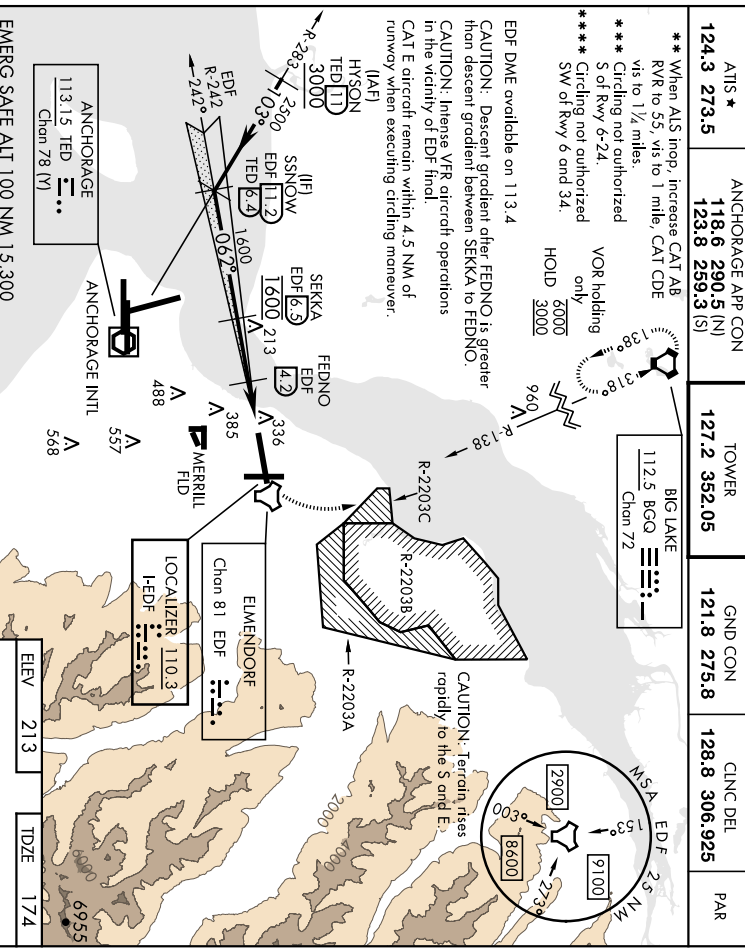
CAT E aircraft remain within 4.5 NM of runway when executing circling maneuver.

(IAF)

HSN

TED(11)

3000



EMERG SAFE ALT 100 NM 15,300

HSN

TED

3000

103°

2500

062°

1600

900

103°

2500

062°

1600

900

062°

1600

900

062°

1600

900

062°

1600

900

062°

1600

900

062°

1600

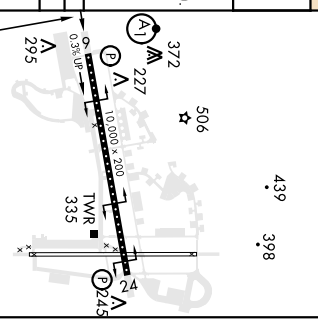
900

062°

1600

900

062°



ELEV 213

TDZE 174

ANCHORAGE, ALASKA

RNAV (GPS) RWY 6

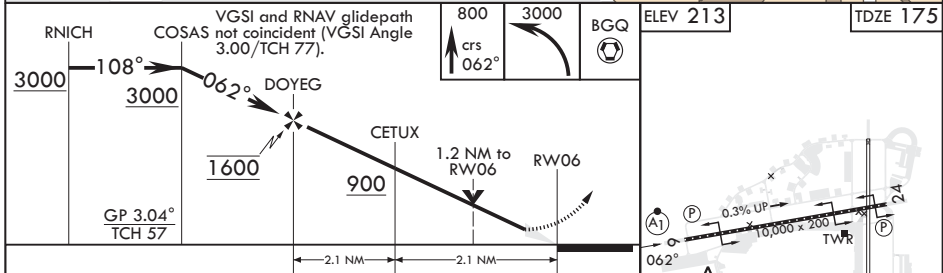
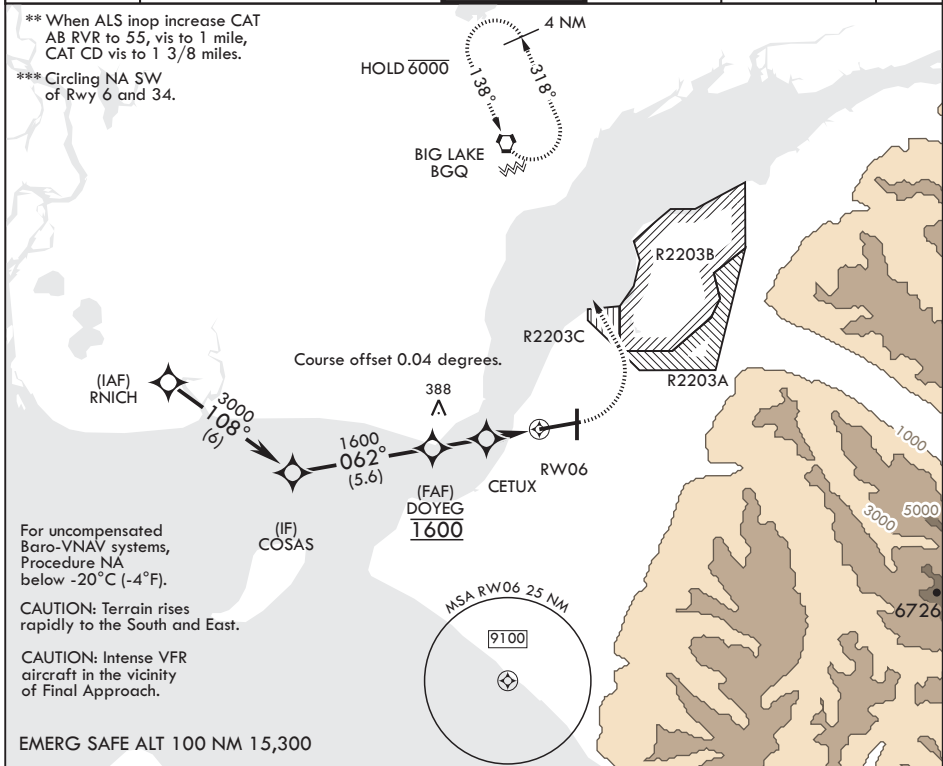
APCH CRS	Rwy Idg	10,000
062°	TDZE	175
	Arprt Elev	213

(-USAF)

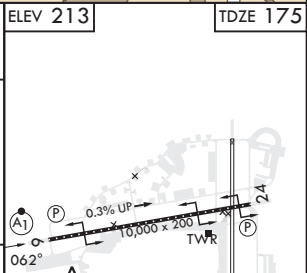
ELMENDORF AFB (PAED)

RNP APCH	ALSF-1	MISSED APPROACH: Climb to 800 then climbing left turn to 3000 direct BGQ and hold.
GPS required.		
* When ALS inop increase RVR to 60, vis to 1 1/8 miles.		

ATIS*	ANCHORAGE APP CON/DEP CON	TOWER	GND CON	CLNC DEL	PAR
124.3 273.5	118.6 290.5	127.2 352.05	121.8 275.8	128.8 306.925	



CATEGORY	A	B	C	D
LNAV/VNAV DA*	561/35	386	(400-5/4)	576/40 401 (400-3/4)
LNAV MDA**	640/24 465	(500-1/2)	640/50 465	(500-1)
CIRCLING***	840-1 627	(700-1)	920-2 707 (800-2)	1020-2 1/2 807 (900-2 1/2)



ANCHORAGE, ALASKA
Amdt 5 25JAN24

61°15'N - 149°48'W

ELMENDORF AFB (PAED)

RNAV (GPS) RWY 6

AK, 25 JAN 2024 to 21 MAR 2024

AK, 25 JAN 2024 to 21 MAR 2024

ANCHORAGE, ALASKA

TACAN RWY 6

[USAF]

ELMENDORF AFB (PAED)

TACAN EDF	APCH CRS	Req'd Idg	10,000
Chon 81	062°	TDZE	174
		Appt Elev	213

▲ * When AIS Inop, increase CAT AB RWY to 55, via to 1 mile; CAT EDF via to 1 1/2 miles.
 ** Circling not authorized S of Rwy 6-24.

▲ MISSED APPROACH: Climbing left turn to 3000 via EDF R-307 to HOBBS and hold.

AITS *	ANCHORAGE APP CON	(N)	118.6 290.5
	(S)		123.8 250.3

TOWER	127.2 352.05
-------	--------------

GND CON	121.8 275.8
---------	-------------

CLNC DEL	128.8 306.925
----------	---------------

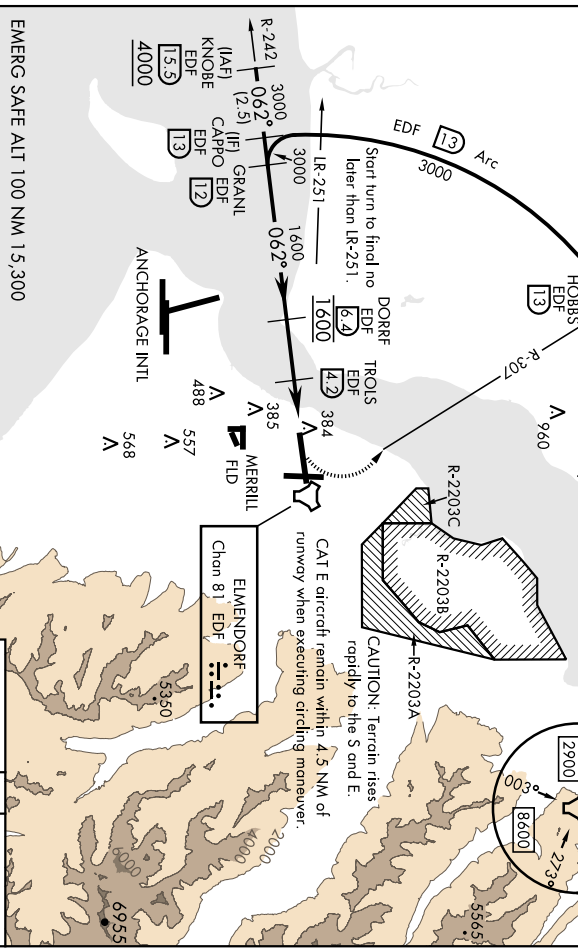
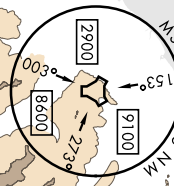
PAR	
-----	--

*** Circling not authorized SW of Rwy 6 and 34.



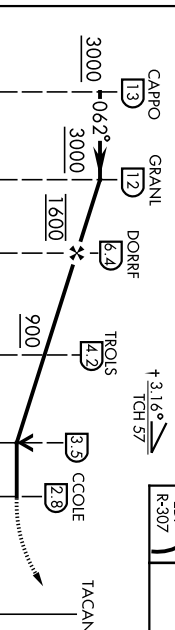
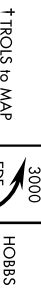
CAUTION: Descent gradient after TROLS DME fix is greater than descent gradient between DORRF and TROLS.
 CAUTION: Intense VFR aircraft operations in the vicinity of EDF final.

MISSED APPROACH requires use of RNAV or ATC radar monitoring.



EMERG SAFE ALTI 100 NM 15,300

VGSI and descent angles not coincident (VGSI Angle 3.00/TCR 771).



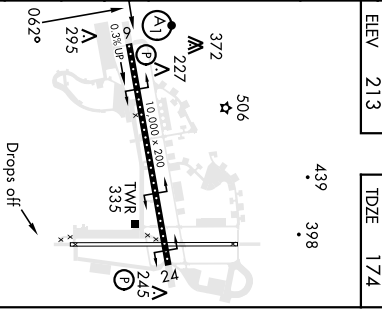
CATEGORY	A	B	C	D	E
----------	---	---	---	---	---

S-6 *	640/24 465 (500-1/2)	640/50	465	(500-1)	
-------	----------------------	--------	-----	---------	--

◻ CIRCLING **	840-1 627 (700-1)	840-1 1/4 627 (700-2)	840-2 627 (700-2)	940-2 1/2 727 (800-2 1/2)	
---------------	-------------------	-----------------------	-------------------	---------------------------	--

*** CIRCLING Rwy 34 CIRCLING MINIMUMS

◻ CIRCLING ***	840-1 627 (700-1)	920-2 1020-2 1/2 707 (800-2)	1480-3 807 (900-2 1/2) 1267 (1300-3)	
----------------	-------------------	------------------------------	--------------------------------------	--



ANCHORAGE, ALASKA

TACAN RWY 6

Amnd 4 03NOV22

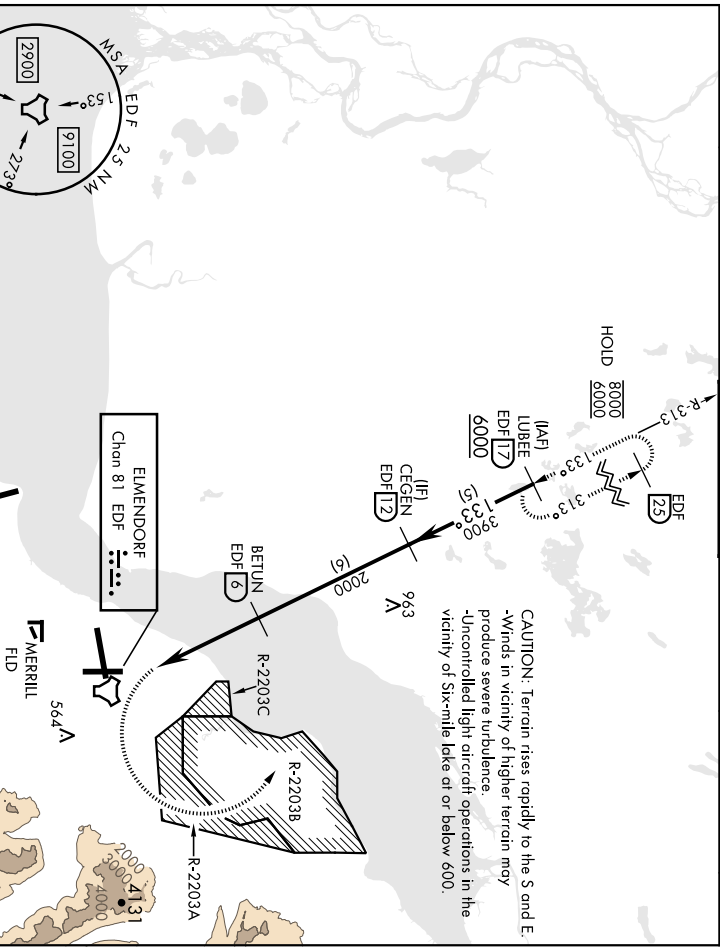
ELMENDORF AFB (PAED)

TACAN Z RWY 16

[USAF]

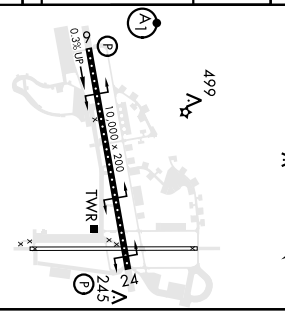
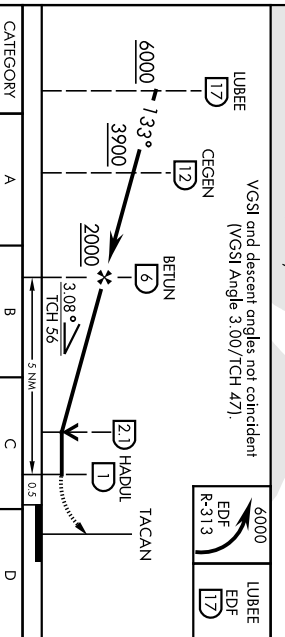
ELMENDORF AFB (PAED)

TACAN EDF Chan 81	APCH CRS 133°	Rwy/Ldg TDZE Appt Elev 213 213	ANCHORAGE APP CON 118.6 290.5 (N) 123.8 259.3 (S)	TOWER 127.2 352.05	GND CON 121.8 275.8	CLNC DEL 128.8 306.925	PAR
<p>▲ * Circling not authorized SW of Rwy 6 and 34. Visibility reduction by Helicopters NA.</p>			<p>MISSED APPROACH: Climbing left turn to 6000 via EDF TACAN R-313 to LUBEE and hold. Continue climb-in-hold to 6000.</p>				



EMERG SAFE ALT 100 NM, 15,300

VGSI and descent angles not coincident
(VGSI Angle 3.00/TCH 47).



ELEV	213	TDZE	213
			428
			133°

CATEGORY	A	B	C	D
	S-16	740-1 527 (600-1)	740-1½ 527 (600-1½)	920-2 1020-2½ 707 (800-2) 807 (900-2½)
CIRCLING*	840-1 627 (700-1)			HRL Rwy 6-24 TDZL/CL Rwy 6

ANCHORAGE ALASKA
Amdt 4 29DEC22

TACAN Z RWY 16

ELMENDORF AFB (PAED)