

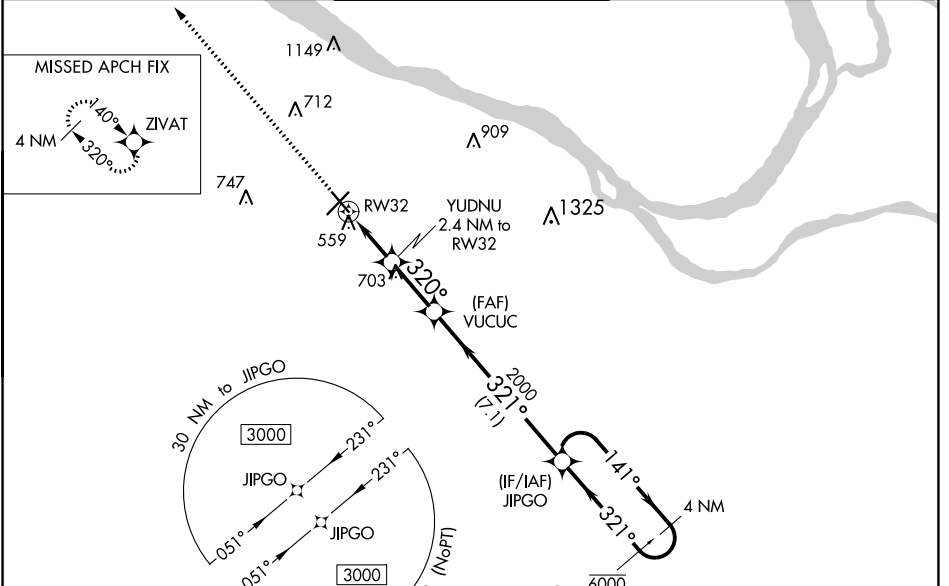
WAAS CH 61033 W32A	APP CRS 320°	Rwy Idg 5324 TDZE 410 Apt Elev 411
--	------------------------	---

RNAV (GPS) RWY 32

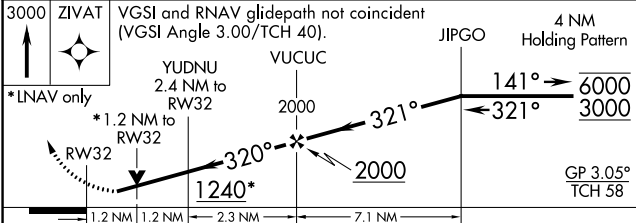
BARKLEY RGNL (PAH)

RNP APCH.		MISSED APPROACH: Climb to 3000 direct ZIVAT and hold.	
<p>▽ ▲ Rwy 32 helicopter visibility reduction below ¾ SM NA. For uncompensated Baro-VNAV systems, LNAV/VNAV NA below -15°C or above 54°C.</p>			

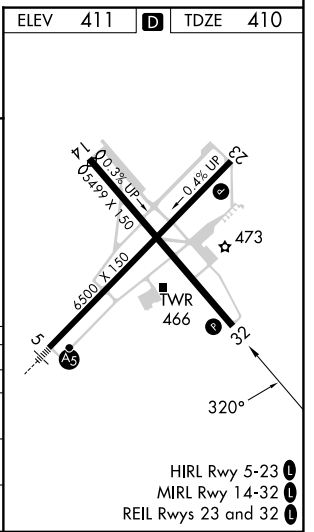
ASOS 118.375	MEMPHIS CENTER 133.65 292.15	PADUCAH TOWER ★ 119.6 (CTAF) 306.9	GND CON 121.7 306.9	UNICOM 122.95
------------------------	--	--	-------------------------------	-------------------------



ELEV 411	D TDZE 410
----------	-------------------



3000 ZIVAT	VGSI and RNAV glidepath not coincident (VGSI Angle 3.00/TCH 40).			
*LNAV only	YUDNU 2.4 NM to RW32			
	*1.2 NM to RW32			
	VUCUC 2000			
	JIPGO 4 NM Holding Pattern			
	141° → 6000			
	← 321° 3000			
	GP 3.05° TCH 58			
CATEGORY	A	B	C	D
LPV DA	757-1		347 (400-1)	
LNAV/VNAV DA	832-1¼		422 (500-1¼)	
LNAV MDA	820-1	410 (500-1)	820-1⅛	410 (500-1⅛)
C CIRCLING	900-1	489 (500-1)	920-1½	1100-2¼
			509 (600-1½)	689 (700-2¼)



SE-1, 22 FEB 2024 to 21 MAR 2024

SE-1, 22 FEB 2024 to 21 MAR 2024