

APP CRS	Rwy Idg	<b>3198</b>
<b>063°</b>	TDZE	<b>55</b>
	Apt Elev	<b>55</b>

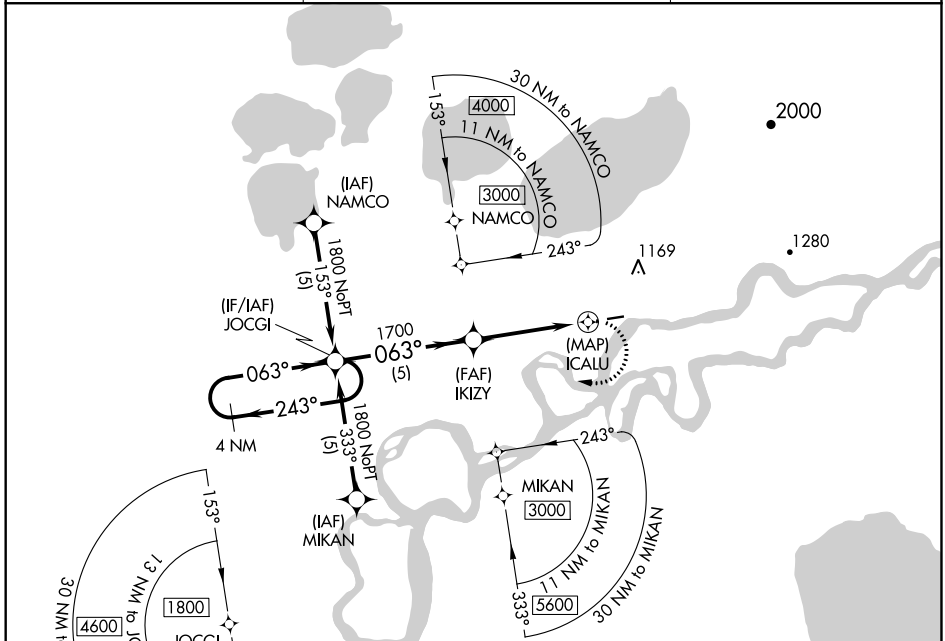
# RNAV (GPS) RWY 6

KALSAG (KLG)(PALG)

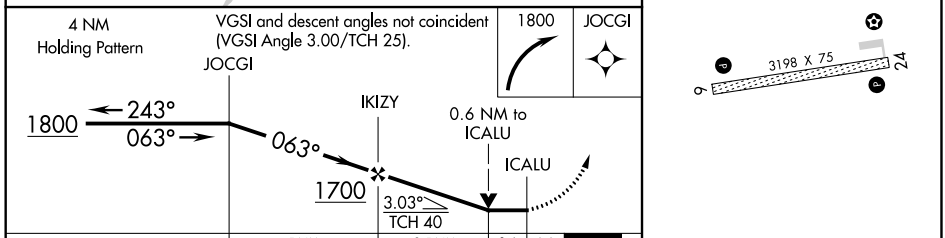
**⚠** Circling NA northwest of Rwy 6-24. DME/DME RNP-0.3 NA. If local altimeter setting not received, use Aniak altimeter setting and increase all MDAs 60 feet. VDP NA when using Aniak altimeter setting.

**⚠** MISSED APPROACH: Climbing right turn to 1800 direct JOCGI WP and hold.

AWOS-3P <b>119.025</b>	ANCHORAGE CENTER <b>118.15 251.05</b>	UNICOM <b>122.8</b> (CTAF) <b>1</b>
---------------------------	--	--



ELEV 55	TDZE 55
---------	---------



CATEGORY	A	B	C	D
LNVA MDA	540-1	485 (500-1)		NA
CIRCLING	540-1	485 (500-1)		NA

MIRL Rwy 6-24 **1**

AK, 13 SEP 2018 to 08 NOV 2018

AK, 13 SEP 2018 to 08 NOV 2018

APP CRS <b>285°</b>	Rwy Idg TDZE Apt Elev	<b>N/A</b> <b>N/A</b> <b>55</b>
------------------------	-----------------------------	---------------------------------------

# RNAV (GPS)-A

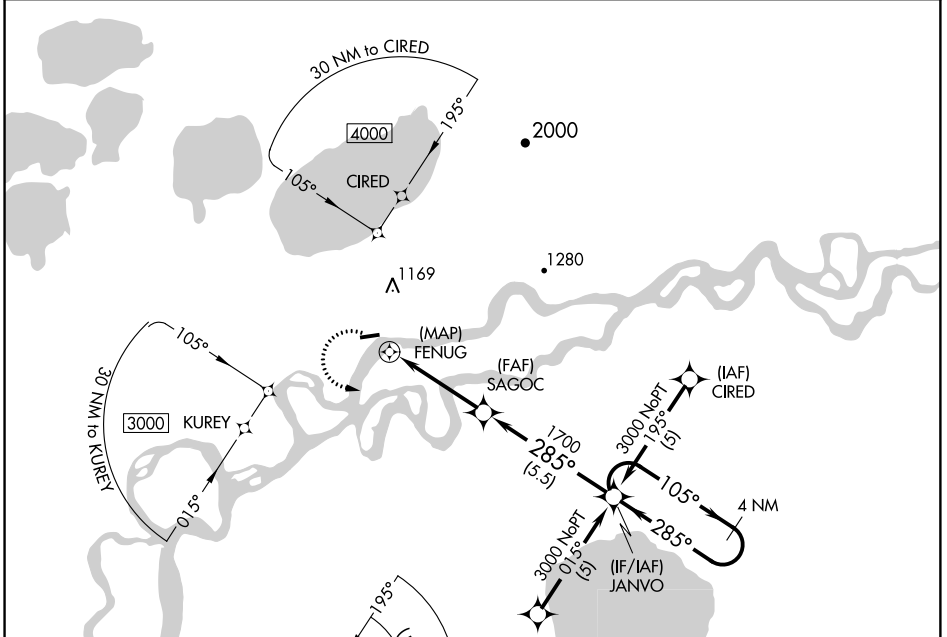
KALSAG (KLG)(PALG)

**⚠** Circling NA northwest of Rwy 6-24. DME/DME RNP-0.3 NA. If local altimeter setting not received, use Aniak altimeter setting and increase all MDAs 60 feet.

**⚠** MISSED APPROACH: Climbing left turn to 3000 direct JANVO and hold.

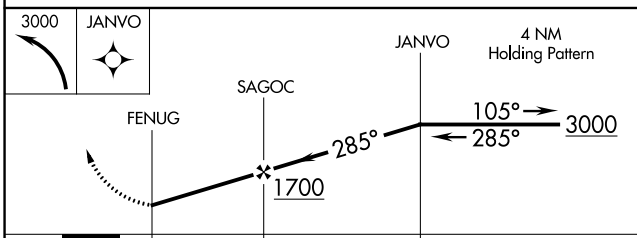
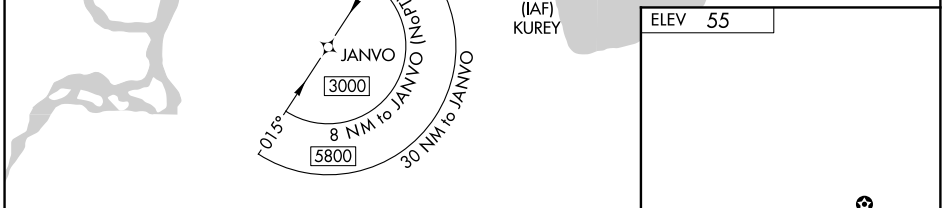
**❄** -42°C

AWOS-3P <b>119.025</b>	ANCHORAGE CENTER <b>118.15 251.05</b>	UNICOM <b>122.8</b> (CTAF) <b>①</b>
---------------------------	--	--



AK, 13 SEP 2018 to 08 NOV 2018

AK, 13 SEP 2018 to 08 NOV 2018



CATEGORY	A	B	C	D
CIRCLING	540-1	485 (500-1)	NA	

