

18312

GRAAY THREE DEPARTURE (GRAAY3•JAPKI)

CAPE LISBURNE IRRS (PALU)
CAPE LISBURNE, ALASKA

ANCHORAGE CENTER APP/DEP CON
119.45 363.25
CAPE LISBURNE RADIO
126.2 (CTAF)

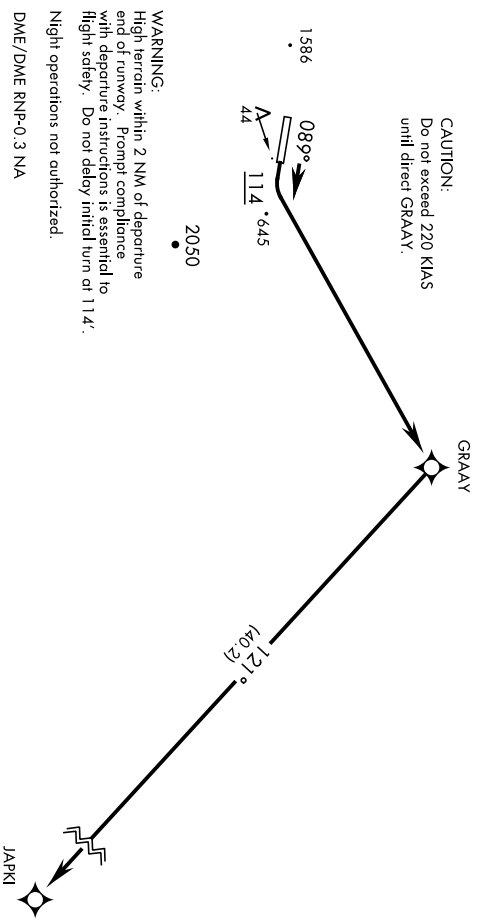
SL-2327 [USAF]

Rwy	Knots	60	120	180	240	300	360
9	V/V/[fpm]	362	724	1086	1448	1810	2172

Minimum climb gradient to 600

NOT FOR CIVIL USE

For use by certified military aircrew or authorized military contract aircraft only.



CAUTION:
Do not exceed 220 KIAS
until direct GRAAY.

WARNING:
High terrain within 2 NM of departure end of runway. Prompt compliance with departure instructions is essential to flight safety. Do not delay initial turn at 11.4'.
Night operations not authorized.

DME/DME RNP-0.3 NA

Procedure NA for CAT E aircraft.

Uncontrolled Airspace below 700' AGL
within 7 NM of Cape Lisburne airport.

Use of 1228 airway requires aircraft to be
equipped with TSO-145a/146a capability.

GPS REQUIRED

DEPARTURE ROUTE DESCRIPTION

TAKE-OFF RWY 9: Climb heading 089° to 114, then climbing left turn to 8000 direct GRAAY, then right turn on track 121° to JAPKI via filed route and altitude.

TAKE-OFF RWY 27: NOT AUTHORIZED

AK, 12 AUG 2021 to 07 OCT 2021

AK, 12 AUG 2021 to 07 OCT 2021

GRAAY THREE DEPARTURE (GRAAY3•JAPKI)

Amtd 2 08NOV18

CAPE LISBURNE, ALASKA
CAPE LISBURNE IRRS (PALU)